



2017 Ram 2500 Laramie Longhorn

Danny Diedrich 602-513-3298

Our Price \$59,950

Retail Value \$68,950

View this vehicle on our website at arizonaclassiccarsales.com

Arizona Classic Car Sales

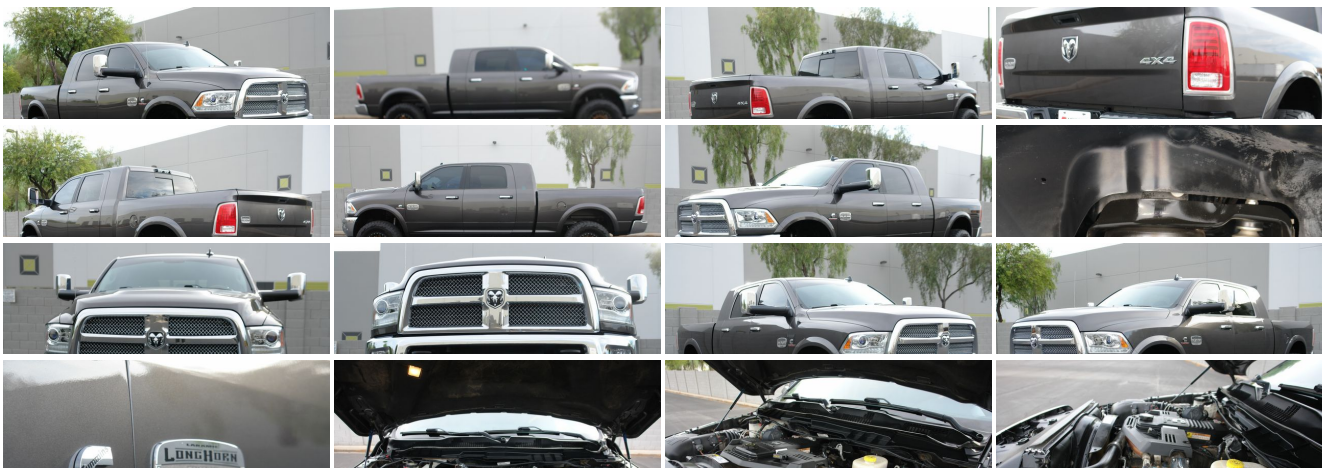
[602-513-3298](tel:602-513-3298)

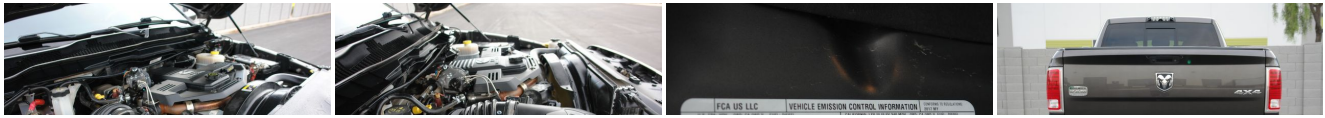
2010 W. Parkside Ln. #118 , Phoenix, AZ 85027

Photos

Details

Contact





Specifications:

Year:	2017
VIN:	3C6UR5PL0HG562192
Make:	Ram
Stock:	562192
Model/Trim:	2500 Laramie Longhorn
Condition:	Pre-Owned
Body:	Pickup Truck
Exterior:	Gray
Engine:	ENGINE: 6.7L I6 CUMMINS TURBO DIESEL
Interior:	Brown Leather
Transmission:	Automatic transmission
Mileage:	79,957
Drivetrain:	4 Wheel Drive

Vehicle Description

Arizona Classic Car Sales is thrilled to offer this stunning *2017 Ram 2500 Laramie Longhorn 4x4 Mega Cab, 6.7L Cummins Turbo Diesel*, Loaded with options including, Navigation, Heated / Cooled Seats, Carli Lift Kit, FOX Shocks, 37" Toyo Tires, Method Wheels, Rear Airbags with onboard air compressor, Spray in Bedliner, Tinted Windows, Amp Steps, Moonroof, ONLY 79k Miles, TRANSFERABLE WARRANTY FROM DODGE. Clean Car Fax, One Owner, PRIVATE SALE...!! NO TAX...!! VERY WELL MAINTAINED, AND MORE...!!

Don't hesitate to call anytime with any questions or offers...!!

602-513-3298

Installed Options

Interior

- FOB Controls -inc: Remote Engine Start
- Gauges -inc: Speedometer, Odometer, Voltmeter, Oil Pressure, Engine Coolant Temp, Tachometer, Oil Temperature, Transmission Fluid Temp, Engine Hour Meter, Trip Odometer and Trip Computer
- Heated Front Seats- Power 10-Way Memory Driver & 6-Way Passenger Seats
- Power 1st Row Windows w/Driver And Passenger 1-Touch Up/Down
- Power Door Locks w/Autolock Feature- Power Lumbar Adjust- Power Rear Windows
- Premium Filigree Leather Seats
- Remote Keyless Entry w/Integrated Key Transmitter, Illuminated Entry and Panic Button
- Smart Device Remote Engine Start- Trip Computer- Ventilated Front Seats
- 115V Auxiliary Power Outlet- 2 Seatback Storage Pockets- 3 12V DC Power Outlets
- Analog Appearance- Audio and Pedals- Bucket Seats- Cargo Area Concealed Storage

Option Packages

Factory Installed Packages

ENGINE: 6.7L I6 CUMMINS TURBO DIESEL	
-inc: Selective Catalytic Reduction (Urea), 180 Amp Alternator, Cummins Turbo Diesel Badge, Current Generation Engine Controller, Diesel Exhaust Brake, GVWR: 10,000 lbs, RAM Active Air	\$8,700

Option Packages Total	\$8,700
-----------------------	---------

- Compass- Cruise Control w/Steering Wheel Controls
- Day-Night Auto-Dimming Rearview Mirror- Delayed Accessory Power
- Driver And Passenger Visor Vanity Mirrors w/Driver And Passenger Illumination
- Driver Seat- Dual Zone Front Automatic Air Conditioning w/Front Infrared
- Electronically Controlled Throttle- Exterior Mirrors w/Memory
- Fade-To-Off Interior Lighting- Front Center Armrest w/Storage and Rear Center Armrest
- Front Cupholder- Front Facing Manual Reclining Leather Rear Seat- Front Map Lights
- Full Carpet Floor Covering -inc: Vinyl/Rubber Front And Rear Floor Mats
- Full Cloth Headliner
- Full Floor Console w/Covered Storage, Mini Overhead Console and 3 12V DC Power Outlets
- Garage Door Transmitter- HVAC -inc: Underseat Ducts and Console Ducts
- Heated Second Row Seats- Heated Steering Wheel- High Back Seats
- Illuminated Glove Box
- Instrument Panel Bin, Dashboard Storage, Driver / Passenger And Rear Door Bins
- Interior Trim -inc: Genuine Wood/Metal-Look Instrument Panel Insert, Genuine Wood Door Panel Insert, Leather/Genuine Wood Console Insert and Chrome/Metal-Look Interior Accents
- Leather Door Trim Insert- Leather Steering Wheel
- Leather/Chrome Gear Shifter Material- Locking Tailgate
- Manual Adjustable Front Head Restraints and Manual Adjustable Rear Head Restraints
- Manual Tilt Steering Column- Outside Temp Gauge- Passenger Seat- Perimeter Alarm
- Power Adjustable Pedals- Rear 60/40 Split Folding Seat- Rear Cupholder
- Redundant Digital Speedometer- Seats w/Leatherette Back Material
- Sentry Key Engine Immobilizer- Smart Device Integration- Systems Monitor
- Uconnect Access Mobile Hotspot Internet Access- Underhood Lights- Valet Function
- Voice Recorder

Exterior

- Aluminum Wheels w/Polished w/Painted Accents Accents w/Chrome Hub Covers
- Exterior Mirrors w/Heating Element- Exterior Mirrors w/Supplemental Signals
- Power w/Tilt Down Side Mirrors w/Driver Auto Dimming - Power-Folding Mirrors
- Running Boards- Spray-In Bed Liner- Tires: LT275/70R18E BSW AS
- Variable Intermittent Wipers
- Auto On/Off Projector Beam Halogen Headlamps w/Delay-Off
- Black Side Windows Trim and Black Front Windshield Trim - Center Hub
- Chrome Door Handles- Chrome Exterior Mirrors- Chrome Grille- Clearcoat Paint
- Colored Fender Flares- Colored Front Bumper w/2 Tow Hooks
- Colored Rear Step Bumper- Deep Tinted Glass- Exterior Mirrors Courtesy Lamps
- Front Fog Lamps- Front License Plate Bracket
- Full-Size Spare Tire Stored Underbody w/Crankdown- Fully Galvanized Steel Panels
- Hemi Badge- LED Bed Lighting- LED Brake Lights- Next Generation Engine Controller
- Power Rear Window- Regular Box Style- Steel Spare Wheel
- Tailgate Rear Cargo Access- Vendor Painted Cargo Box Tracking
- Wheels: 18" x 8.0" Aluminum w/Walnut Pockets

Safety

- FOB Controls -inc: Remote Engine Start
- Gauges -inc: Speedometer, Odometer, Voltmeter, Oil Pressure, Engine Coolant Temp, Tachometer, Oil Temperature, Transmission Fluid Temp, Engine Hour Meter, Trip Odometer and Trip Computer
- Heated Front Seats- Power 10-Way Memory Driver & 6-Way Passenger Seats
- Power 1st Row Windows w/Driver And Passenger 1-Touch Up/Down
- Power Door Locks w/Autolock Feature- Power Lumbar Adjust- Power Rear Windows
- Premium Filigree Leather Seats
- Remote Keyless Entry w/Integrated Key Transmitter, Illuminated Entry and Panic Button
- Smart Device Remote Engine Start- Trip Computer- Ventilated Front Seats
- 115V Auxiliary Power Outlet- 2 Seatback Storage Pockets- 3 12V DC Power Outlets
- Analog Appearance- Audio and Pedals- Bucket Seats- Cargo Area Concealed Storage
- Compass- Cruise Control w/Steering Wheel Controls
- Day-Night Auto-Dimming Rearview Mirror- Delayed Accessory Power
- Driver And Passenger Visor Vanity Mirrors w/Driver And Passenger Illumination
- Driver Seat- Dual Zone Front Automatic Air Conditioning w/Front Infrared
- Electronically Controlled Throttle- Exterior Mirrors w/Memory
- Fade-To-Off Interior Lighting- Front Center Armrest w/Storage and Rear Center Armrest
- Front Cupholder- Front Facing Manual Reclining Leather Rear Seat- Front Map Lights
- Full Carpet Floor Covering -inc: Vinyl/Rubber Front And Rear Floor Mats
- Full Cloth Headliner
- Full Floor Console w/Covered Storage, Mini Overhead Console and 3 12V DC Power Outlets
- Garage Door Transmitter- HVAC -inc: Underseat Ducts and Console Ducts
- Heated Second Row Seats- Heated Steering Wheel- High Back Seats

- Heated Second Row Seats- Heated Steering Wheel- High Back Seats
- Illuminated Glove Box
- Instrument Panel Bin, Dashboard Storage, Driver / Passenger And Rear Door Bins
- Interior Trim -inc: Genuine Wood/Metal-Look Instrument Panel Insert, Genuine Wood Door Panel Insert, Leather/Genuine Wood Console Insert and Chrome/Metal-Look Interior Accents
- Leather Door Trim Insert- Leather Steering Wheel
- Leather/Chrome Gear Shifter Material- Locking Tailgate
- Manual Adjustable Front Head Restraints and Manual Adjustable Rear Head Restraints
- Manual Tilt Steering Column- Outside Temp Gauge- Passenger Seat- Perimeter Alarm
- Power Adjustable Pedals- Rear 60/40 Split Folding Seat- Rear Cupholder
- Redundant Digital Speedometer- Seats w/Leatherette Back Material
- Sentry Key Engine Immobilizer- Smart Device Integration- Systems Monitor
- Uconnect Access Mobile Hotspot Internet Access- Underhood Lights- Valet Function
- Voice Recorder

Mechanical

- Class V Towing Equipment -inc: Hitch, Brake Controller and Trailer Sway Control
- Engine: 5.7L V8 HEMI VVT
- Transmission w/Driver Selectable Mode, Sequential Shift Control and Oil Cooler
- Transmission: 6-Speed Automatic (66RFE)- 160 Amp Alternator
- 1800# Maximum Payload- 3.73 Axle Ratio- 31 Gal. Fuel Tank
- 4-Wheel Disc Brakes w/4-Wheel ABS, Front And Rear Vented Discs, Brake Assist and Hill Hold Control
- 50 State Emissions- 730CCA Maintenance-Free Battery w/Run Down Protection
- Auto Locking Hubs- Electronic Transfer Case- Front Anti-Roll Bar
- Front Heavy Duty Shock Absorbers- GVWR: 9,000 lbs- HD Suspension
- Hydraulic Power-Assist Steering- Multi-Link Front Suspension w/Coil Springs
- Multi-Link Rear Suspension w/Coil Springs- Part-Time Four-Wheel Drive
- Rear Heavy Duty Shock Absorbers- Single Stainless Steel Exhaust- Tip Start
- Trailer Wiring Harness

Arizona Classic Car Sales

Arizona Classic Car Sales

View this car on our website at arizonaclassiccarsales.com/7106173

Website: arizonaclassiccarsales.com

Phone: 602-513-3298

Map: 2010 W. Parkside Ln. #118, Phoenix, AZ 85027

