

2014 GMC Yukon SLT

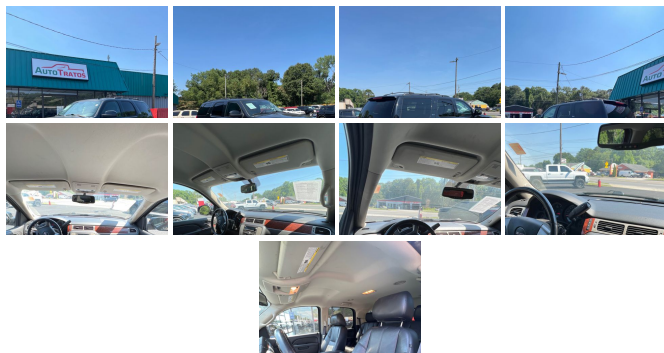
View this car on our website at autotratos.com/7103995/ebrochure



Nuestro precio **\$0**

Specifications:

Year:	2014
VIN:	1GKS1CE04ER105311
Make:	GMC
Stock:	105311
Model/Trim:	Yukon SLT
Condition:	Pre-Owned
Body:	SUV
Exterior:	BLACK
Engine:	ENGINE, VORTEC 5.3L V8 SFI FLEXFUEL WITH ACTIVE FUEL MANAGEMENT
Interior:	N/A Leather
Mileage:	137,655
Drivetrain:	Rear Wheel Drive
Economy:	City 15 / Highway 21



2014 GMC Yukon SLT

Auto Tratos Marietta - (678) 403-8113 - View this car on our website at autotratos.com/7103995/ebrochure

Our Location :



2014 GMC Yukon SLT

Auto Tratos Marietta - (678) 403-8113 - View this car on our website at autotratos.com/7103995/ebrochure

Installed Options

Interior

- Seats, front bucket with leather-appointed seating Heated and (AG1) 6-way power driver and (AG2) front passenger seat adjusters, adjustable head restraints, driver manual lumbar control, floor console and rear storage pockets
- Seats, third row 50/50 split-bench with vinyl 3-passenger, removable, all-belts-to-seat
- Seats, second row 60/40 split-folding bench with leather-appointed seating 3-passenger with center armrest and storage tray (Not available with (AL4) second row captain's chairs.)
- Seat adjuster, driver 6-way power- Seat adjuster, front passenger 6-way power
- Console, floor with storage area, cup holders and integrated second row audio and HVAC controls
- Cup holders, in front seating area- Cup holders, in second row seating area
- Cup holders, driver and passenger-side in third row side trim
- Floor mats, color-keyed carpeted first and second row, removable
- Floor covering, color-keyed carpeting
- Steering column, Tilt-Wheel, adjustable with brake/transmission shift interlock
- Steering wheel, leather-wrapped
- Steering wheel controls, mounted audio controls cruise controls and OnStar Hands-Free calling
- Driver Information Center, full-functionality included with temperature and compass
- Instrumentation, analog with speedometer, odometer with trip odometer, fuel level, voltmeter, engine temperature, oil pressure, tachometer, compass and outside temperature gauge
- Warning tones headlamp on, key-in-ignition, driver and passenger buckle up reminder and turn signal on
- Windows, power with driver Express-Down and lockout features
- Door locks, power programmable with lockout protection
- Cruise control, electronic with set and resume speed
- Pedals, power-adjustable for accelerator and brake (Includes memory function with (AN3) front bucket seats.)
- Universal Home Remote includes garage door opener, programmable
- Remote vehicle starter system includes Remote Keyless Entry

- Air conditioning, tri-zone automatic climate control with individual climate settings for driver and right front passenger and rear seat with rear controls located in floor console
- Air conditioning, rear auxiliary- Heater, rear auxiliary with rear passenger heating ducts
- Defogger, rear-window electric- Theft-deterrent system, vehicle, PASS-Key III
- Power outlets, 5 auxiliary, 12-volt includes 2 on the instrument panel, 1 in the cargo area, 1 inside the center console and 1 at the back of the console
- Door trim, side reflectors on rear doors- Armrests, driver and passenger doors, padded
- Mirror, inside rearview auto-dimming with rear camera display (Not available with (UYS) Audio System with navigation.)
- Console, overhead mini with map lights
- Visors, driver and front passenger illuminated vanity mirrors, padded with cloth trim, extends on rod includes corner storage pockets on back of visors, Shale-colored
- Assist handles, front passenger and second row outboard
- Lighting, interior with dome light, driver- and passenger-side door switch with delayed entry feature, cargo lights, door handle or Remote Keyless Entry-activated illuminated entry and map lights in front and second seat positions
- Coat hooks, driver- and passenger-side rear seat and cargo area
- Storage bin, behind driver-side rear quarter panel

Exterior

- Wheels, 4 - 17" x 7.5" (43.2 cm x 19.1 cm) bright aluminum, sport (Not available with (PCQ) SLT Chrome Package.)
- Tires, P265/70R17 all-season, blackwall- Wheel, 17" (43.2 cm) full-size, steel spare
- Tire carrier, lockable outside spare winch-type mounted under frame at rear
- Tire, spare P265/70R17 all-season, blackwall (Upgradeable to (4JP) P265/70R17 on-/off-road, blackwall spare tire.)
- Luggage rack side rails, roof-mounted, Black (Roof rails are black.)
- Luggage rack center rails- Fascia, front color-keyed- Fascia, rear color-keyed
- Moldings, body-color bodyside- Air dam, Gray- Assist steps, Black
- Headlamps, dual halogen composite with automatic exterior lamp control and flash-to-pass feature
- Fog lamps, front round halogen
- Mirrors, outside heated power-adjustable, body-color, manual-folding (Mirrors are body-color.)
- Glass, Solar-Ray deep-tinted (all windows except light-tinted glass on windshield and driver- and front passenger-side glass)
- Wipers, front intermittent wet-arm with flat blade and pulse washers
- Liftgate with liftglass, rear door system with rear-window wiper/washer
- Wiper, rear intermittent with washer

Safety

- Seats, front bucket with leather-appointed seating Heated and (AG1) 6-way power driver and (AG2) front passenger seat adjusters, adjustable head restraints, driver manual lumbar control, floor console and rear storage pockets
- Seats, third row 50/50 split-bench with vinyl 3-passenger, removable, all-belts-to-seat
- Seats, second row 60/40 split-folding bench with leather-appointed seating 3-passenger with center armrest and storage tray (Not available with (AL4) second row captain's chairs.)
- Seat adjuster, driver 6-way power- Seat adjuster, front passenger 6-way power
- Console, floor with storage area, cup holders and integrated second row audio and HVAC controls
- Cup holders, in front seating area- Cup holders, in second row seating area
- Cup holders, driver and passenger-side in third row side trim
- Floor mats, color-keyed carpeted first and second row, removable
- Floor covering, color-keyed carpeting
- Steering column, Tilt-Wheel, adjustable with brake/transmission shift interlock
- Steering wheel, leather-wrapped
- Steering wheel controls, mounted audio controls cruise controls and OnStar Hands-Free calling
- Driver Information Center, full-functionality included with temperature and compass
- Instrumentation, analog with speedometer, odometer with trip odometer, fuel level, voltmeter, engine temperature, oil pressure, tachometer, compass and outside temperature gauge
- Warning tones headlamp on, key-in-ignition, driver and passenger buckle up reminder and turn signal on
- Windows, power with driver Express-Down and lockout features
- Door locks, power programmable with lockout protection
- Cruise control, electronic with set and resume speed
- Pedals, power-adjustable for accelerator and brake (Includes memory function with (AN3) front bucket seats.)
- Universal Home Remote includes garage door opener, programmable
- Remote vehicle starter system includes Remote Keyless Entry
- Air conditioning, tri-zone automatic climate control with individual climate settings for driver and right front passenger and rear seat with rear controls located in floor console
- Air conditioning, rear auxiliary- Heater, rear auxiliary with rear passenger heating ducts
- Defogger, rear-window electric- Theft-deterrent system, vehicle, PASS-Key III

- Power outlets, 5 auxiliary, 12-volt includes 2 on the instrument panel, 1 in the cargo area, 1 inside the center console and 1 at the back of the console
- Door trim, side reflectors on rear doors- Armrests, driver and passenger doors, padded
- Mirror, inside rearview auto-dimming with rear camera display (Not available with (UYS) Audio System with navigation.)
- Console, overhead mini with map lights
- Visors, driver and front passenger illuminated vanity mirrors, padded with cloth trim, extends on rod includes corner storage pockets on back of visors, Shale-colored
- Assist handles, front passenger and second row outboard
- Lighting, interior with dome light, driver- and passenger-side door switch with delayed entry feature, cargo lights, door handle or Remote Keyless Entry-activated illuminated entry and map lights in front and second seat positions
- Coat hooks, driver- and passenger-side rear seat and cargo area
- Storage bin, behind driver-side rear quarter panel

Mechanical

- Engine, Vortec 5.3L V8 SFI FlexFuel with Active Fuel Management capable of running on unleaded or up to 85% ethanol (with gas - 320 hp [238.6 kW] @ 5400 rpm, 335 lb-ft of torque [452.2 N-m] @ 4000 rpm, with E85 ethanol - 326 hp [243.1 kW] @ 5300 rpm, 348 lb-ft of torque [469.8 N-m] @ 4400 rpm), iron block
- Transmission, 6-speed automatic, electronically controlled with overdrive, tow/haul mode and tap up/tap down shifting
- Rear axle, 3.08 ratio (Not available with (K5L) Heavy-Duty Trailering Package.)
- Suspension Package, Premium Smooth Ride
- Tow/haul mode selector, button located at end of shift lever
- Differential, heavy-duty locking rear- Alternator, 160 amps- Rear wheel drive
- Trailering equipment, heavy-duty includes trailering hitch platform, 7-wire harness with independent fused trailering circuits mated to a 7-way sealed connector and 2" trailering receiver
- Recovery hooks, 2 front, frame-mounted
- GVWR, 7100 lbs. (3221 kg) (Standard on 2WD models.)
- Suspension, front coil-over-shock with stabilizer bar
- Suspension, rear multi-link with coil springs- Steering, power- Powertrain grade braking
- Exhaust, aluminized stainless-steel muffler and tailpipe
- Tools, mechanical jack and wheel wrench stored in rear quarter trim

Option Packages

Factory Installed Packages

ENGINE, VORTEC 5.3L V8 SFI FLEXFUEL WITH ACTIVE FUEL MANAGEMENT

capable of running on unleaded or up to 85% ethanol (with gas - 320 hp [238.6 kW] @ 5400 rpm, 335 lb-ft of torque [452.2 N-m] @ 4000 rpm, with E85 ethanol - 326 hp [243.1 kW] @ 5300 rpm, 348 lb-ft of torque [469.8 N-m] @ 4400 rpm), iron block

Auto Tratos Marietta

autotratos.com

(678) 403-8113

1663 South Cobb Drive SE

Marietta, GA 30060

© 2023 AutoRevo - All rights reserved. - Powered by AutoRevo