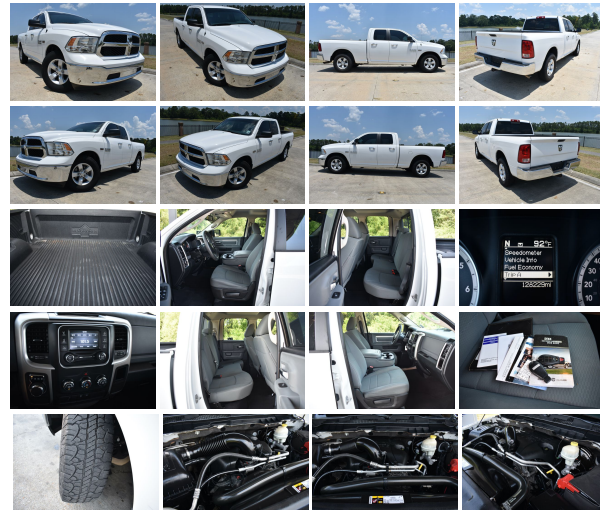


## 2014 Ram 1500 SLT

View this car on our website at [trucksinlouisiana.com/7103811/ebrochure](http://trucksinlouisiana.com/7103811/ebrochure)



Our Price **\$17,990**

Retail Value **\$19,600**

### Specifications:

<b>Year:</b>	2014
<b>VIN:</b>	1C6RR6GT7ES236518
<b>Make:</b>	Ram
<b>Model/Trim:</b>	1500 SLT
<b>Condition:</b>	Pre-Owned
<b>Body:</b>	Pickup Truck
<b>Exterior:</b>	White
<b>Engine:</b>	ENGINE: 5.7L V8 HEMI MDS VVT
<b>Interior:</b>	Gray Cloth
<b>Mileage:</b>	128,225
<b>Drivetrain:</b>	Rear Wheel Drive
<b>Economy:</b>	City 15 / Highway 22

### SLT PACKAGE

### 5.7L HEMI

You are looking at a 2014 Dodge Ram 1500 Quad Cab. It is powered with a 5.7L HEMI V-8 and automatic transmission. It is equipped with power mirrors, power windows, power locks, tilt, cruise, receiver hitch, bed liner, and am/fm radio. Also included are the owner's manuals and one keyless remote.

The interior of this truck is in good shape for the mileage. The seats are in good shape. The carpet is in good shape. Everything appears to function properly. It was not smoked in.

The exterior of this truck overall is in good shape. There maybe a normal flaw associated with a the age and miles, but nothing signifcant. If you are a serious buyer please call and allow us to give you a thorough walk around to make sure it meets your criteria. The windshield is in good shape.

Mechanically this truck starts right up and runs smooth. The transmission shifts smooth. The a/c blows ice cold. The front end is tight. The tires are in good shape.

NADA VALUES

ROUGH TRADE IN  
\$13300

AVERAGE TRADE IN  
\$14,850

CLEAN TRADE IN  
\$16,125

RETAIL  
\$19,600

---

This truck is located @ 13359  
Miller Rd. Walker, LA 70785.

Exit I-12 at the Walker Rd.,  
Exit #15

If you have any questions  
about this truck or would like  
to receive a CarFax, please  
call one of our Sales

Representatives @ 225-445-  
5381 or 225-326-2639

Visit [WWW.TRUCKSINLOUISIANA.C](http://WWW.TRUCKSINLOUISIANA.C)

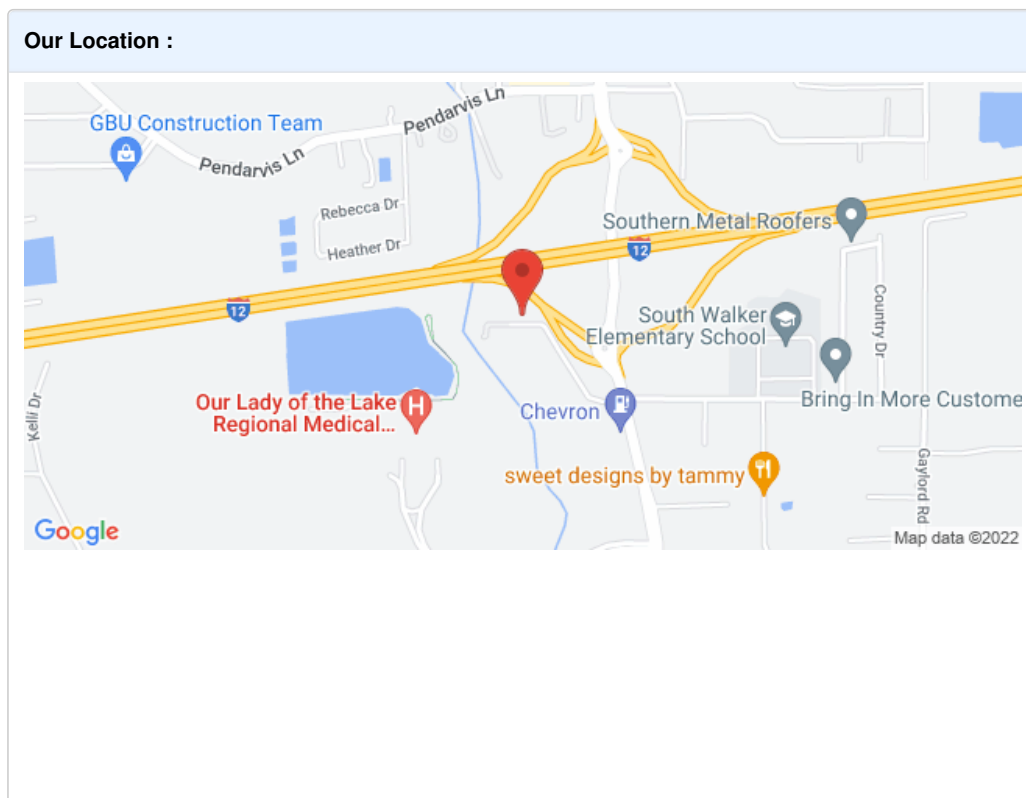
It is the customer's  
responsibility to inspect the  
truck before agreement to  
purchase. Upon agreement to  
purchase, there is a \$500  
deposit. The deposit is non  
refundable unless a major  
issue was not disclosed by the  
seller. The remaining balance  
is due via cash, cashiers  
check, or bank wire within 5  
days. If you need help with  
shipping call PJ @ All States  
Auto Transport: 1-866-342-  
1082, or 1-712-898-  
5727. There is also a  
mandatory \$195  
Documentation charge.

At our dealership we work  
very hard to accurately  
describe our vehicles through  
text descriptions and elaborate  
photos. When you purchase a

PHOTOS. When you purchase a pre-owned vehicle it is not a new vehicle. Any used vehicle can have normal wear and blemishes. Before placing a bid please read the descriptions thoroughly and view all pictures. All vehicles sold as is no warranty.

2014 Ram 1500 SLT

Boardwalk Motorcars LLC - 225-326-2639 - View this car on our website at [trucksinlouisiana.com/7103811/ebrochure](http://trucksinlouisiana.com/7103811/ebrochure)



2014 Ram 1500 SLT

Boardwalk Motorcars LLC - 225-326-2639 - View this car on our website at [trucksinlouisiana.com/7103811/ebrochure](http://trucksinlouisiana.com/7103811/ebrochure)

## Installed Options

### Interior

- 2 12V DC Power Outlets- 40/20/40 Split Bench Seat- Analog Appearance
- Cloth 40/20/40 Bench Seat- Compass- Cruise Control w/Steering Wheel Controls
- Day-Night Rearview Mirror- Delayed Accessory Power- Driver Seat- Electronic Shift
- FOB Controls -inc: Cargo Access- Fade-To-Off Interior Lighting
- Front Armrest w/Three Cupholders- Front Map Lights
- Full Carpet Floor Covering -inc: Carpet Front And Rear Floor Mats - Full Cloth Headliner
- Full Folding Bench Front Facing Fold-Up Cushion Rear Seat
- Gauges -inc: Speedometer, Odometer, Voltmeter, Oil Pressure, Engine Coolant Temp, Tachometer, Oil Temperature, Transmission Fluid Temp, Engine Hour Meter, Trip Odometer and Trip Computer
- Glove Box- HVAC -inc: Underseat Ducts
- Instrument Panel Bin, Dashboard Storage, Driver And Passenger Door Bins and 2nd Row Underseat Storage

- Interior Trim -inc: Deluxe Sound Insulation, Metal-Look Instrument Panel Insert, Metal-Look Door Panel Insert and Chrome/Metal-Look Interior Accents
- Manual Adjustable Front Head Restraints and Manual Adjustable Rear Head Restraints
- Manual Air Conditioning- Manual Tilt Steering Column
- Mini Overhead Console and 2 12V DC Power Outlets- Outside Temp Gauge
- Passenger Seat- Passenger Visor Vanity Mirror- Pickup Cargo Box Lights
- Power 1st Row Windows w/Driver And Passenger 1-Touch Up/Down
- Power Door Locks w/Autolock Feature- Power Rear Windows- Rear Cupholder
- Redundant Digital Speedometer
- Remote Keyless Entry w/Integrated Key Transmitter, Illuminated Entry and Panic Button
- Sentry Key Engine Immobilizer- Systems Monitor- Trip Computer
- Urethane Gear Shifter Material- Valet Function- Vinyl Door Trim Insert

## Exterior

- Active Grille Shutters- Auto On/Off Aero-Composite Halogen Headlamps w/Delay-Off
- Black Exterior Mirrors- Black Side Windows Trim and Black Front Windshield Trim
- Cargo Lamp w/High Mount Stop Light- Center Hub- Chrome Door Handles
- Chrome Front Bumper w/Body-Colored Rub Strip/Fascia Accent- Chrome Grille
- Chrome Rear Step Bumper- Clearcoat Paint- Deep Tinted Glass
- Exterior Mirrors w/Heating Element- Front License Plate Bracket- Full Size Spare Tire
- Galvanized Steel/Aluminum Panels- Goodyear Brand Tires- Power Rear Window
- Power Side Mirrors w/Manual Folding- Regular Box Style
- Spare Tire Stored Underbody w/Crankdown- Steel Spare Wheel
- Tailgate Rear Cargo Access- Tailgate/Rear Door Lock Included w/Power Door Locks
- Tip Start- Tires: P265/70R17 BSW AS- Variable Intermittent Wipers
- Wheels: 17" x 7" Aluminum

## Safety

- 2 12V DC Power Outlets- 40/20/40 Split Bench Seat- Analog Appearance
- Cloth 40/20/40 Bench Seat- Compass- Cruise Control w/Steering Wheel Controls
- Day-Night Rearview Mirror- Delayed Accessory Power- Driver Seat- Electronic Shift
- FOB Controls -inc: Cargo Access- Fade-To-Off Interior Lighting
- Front Armrest w/Three Cupholders- Front Map Lights
- Full Carpet Floor Covering -inc: Carpet Front And Rear Floor Mats- Full Cloth Headliner
- Full Folding Bench Front Facing Fold-Up Cushion Rear Seat
- Gauges -inc: Speedometer, Odometer, Voltmeter, Oil Pressure, Engine Coolant Temp, Tachometer, Oil Temperature, Transmission Fluid Temp, Engine Hour Meter, Trip Odometer and Trip Computer
- Glove Box- HVAC -inc: Underseat Ducts
- Instrument Panel Bin, Dashboard Storage, Driver And Passenger Door Bins and 2nd Row Underseat Storage
- Interior Trim -inc: Deluxe Sound Insulation, Metal-Look Instrument Panel Insert, Metal-Look Door Panel Insert and Chrome/Metal-Look Interior Accents
- Manual Adjustable Front Head Restraints and Manual Adjustable Rear Head Restraints
- Manual Air Conditioning- Manual Tilt Steering Column
- Mini Overhead Console and 2 12V DC Power Outlets- Outside Temp Gauge
- Passenger Seat- Passenger Visor Vanity Mirror- Pickup Cargo Box Lights
- Power 1st Row Windows w/Driver And Passenger 1-Touch Up/Down
- Power Door Locks w/Autolock Feature- Power Rear Windows- Rear Cupholder
- Redundant Digital Speedometer
- Remote Keyless Entry w/Integrated Key Transmitter, Illuminated Entry and Panic Button
- Sentry Key Engine Immobilizer- Systems Monitor- Trip Computer
- Urethane Gear Shifter Material- Valet Function- Vinyl Door Trim Insert

## Mechanical

- 180 Amp Alternator- 1890# Maximum Payload- 26 Gal. Fuel Tank- 3.21 Rear Axle Ratio
- 4-Wheel Disc Brakes w/4-Wheel ABS, Front Vented Discs, Brake Assist and Hill Hold Control
- 730CCA Maintenance-Free Battery- Electric Power-Assist Steering- Engine Oil Cooler
- Engine: 3.6L V6 24V VVT- Front And Rear Anti-Roll Bars- GVWR: 6,700 lbs
- HD Shock Absorbers- Multi-Link Rear Suspension w/Coil Springs- Rear-Wheel Drive
- Rotary Shifter- Short And Long Arm Front Suspension w/Coil Springs
- Single Stainless Steel Exhaust- Towing Equipment -inc: Trailer Sway Control
- Trailer Wiring Harness- Transmission w/Driver Selectable Mode and Oil Cooler
- Transmission: 8-Speed Automatic (845RE)

## Option Packages

### Factory Installed Packages

ENGINE: 5.7L V8 HEMI MDS VVT  
-inc: Electronically Controlled Throttle, Heavy Duty Engine Cooling, GVWR: 6,900 lbs, Next Generation Engine Controller, Dual Rear Exhaust w/Bright Tips, Hemi Badge, Heavy Duty Transmission Oil Cooler

\$1,150

-  
Option Packages Total  
\$1,150

---

Boardwalk Motorcars LLC

[trucksinlouisiana.com](http://trucksinlouisiana.com)

225-326-2639

13359 Miller Rd

Walker, LA 70785

© 2022 AutoRevo - All rights reserved. - Powered by [AutoRevo](#)