



## 2007 INFINITI G35 Manual w/ ASANTI Wheels!

**Website Price \$17,995**

View this vehicle on our website at [autoparkdallas.com](http://autoparkdallas.com)



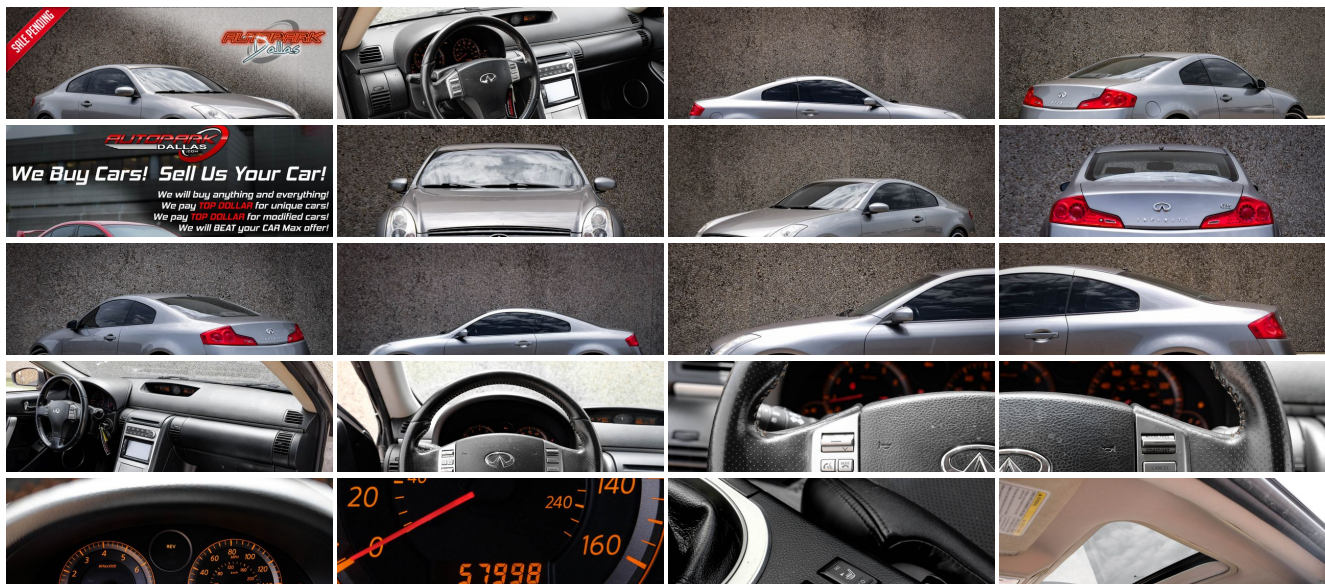
(214) 945-2601

2061 S Stemmons Fwy , Lewisville, TX 75067

Photos

Details

Contact



## Specifications:

<b>Year:</b>	2007
<b>VIN:</b>	JNKC54E77M907928
<b>Make:</b>	INFINITI
<b>Model/Trim:</b>	G35 Manual w/ ASANTI Wheels!
<b>Condition:</b>	Pre-Owned
<b>Body:</b>	Coupe
<b>Exterior:</b>	Diamond Graphite Metallic
<b>Engine:</b>	3.5L DOHC SMPI 24-valve V6 aluminum engine
<b>Interior:</b>	Graphite Leather
<b>Transmission:</b>	6-speed manual transmission w/OD, dual mass flywheel
<b>Mileage:</b>	57,998
<b>Drivetrain:</b>	Rear Wheel Drive
<b>Economy:</b>	City 19 / Highway 26

## Vehicle Description

AutoPark Dallas is thrilled to offer you this 6-Speed Diamond Graphite Metallic 2007 Infiniti G35 sitting on ASANTI Wheels for sale! We at APD know the G-series by INFINITI is the beautiful middle ground of Luxury Sport cars. Giving that pleasure to an enthusiast or a simple car buyer the horsepower to get up and go, all while being powered by one of the most reliable engines in the game! This G35 is a blast from the past that still provides that reliability and the sleek signature INFINITI look that will catch eyes. Come check out this G35 parked in our indoor 16,000 Sq Ft Showroom located in Dallas , Texas amongst our inventory of 100+ other Unique / Modified and Luxury cars!

---

### 2007 INFINITI G35

**\* 2 Previous Owners !\***

**\* Clean CarFax !\***

**\* 2 Set of Keys !\***

**\* Premium Package !\***

Diamond Graphite Exterior

**\* ASANTI (Style: AF-128) Wheels !\***

Black Graphite Leather Interior

**\* Pioneer Stereo Unit !\***

Heated Front Row Seats

Powered Moonroof

Dual Climate Control

BOSE Premium Audio System

Cruise Control

HomeLink Garage Opener

3.5L DOHC SMPI 24-Valve V6 Aluminum Engine

6-Speed Manual Transmission

Rear Wheel Drive

Professionally Detailed!

Well Maintained!

**\* Free CarFax Report !\***

AND SO MUCH MORE!!!

---

# Financing is available!

Check out our Payment Calculator to get an estimate on your monthly payments!

OR

Get pre-approved in no time by filling out a credit application on the 'Finance' section of our website!

We also offer MANY different Extended Warranty options!

---

Check out our Google Reviews by \*Clicking\* this LINK!

Referrals and Testimonials is what our business is built on!

---

The team here at AutoPark Dallas, is dedicated to offering a level of customer service not usually found in the automobile industry. Thanks to years of extensive car buying / selling experience, we pursue quality used and new vehicles that are hand-picked from factory sources. Our love for automobiles and dislike of traditional dealership tactics is what motivates us to provide the service we do! The pride we take in continuing this service long after the vehicle has been delivered is what we strive for! Looking forward to making every effort to see that our customer is completely satisfied and a friend for life!

Pre-purchase inspections are always welcomed!

We also offer airport pick-up, competitive financing options, free CarFax Reports, Car Shipping nationwide, Extended Warranty plans, and so much more!

Trade-In(s) are always accepted or sell us your used car (MODIFIED OR NOT)! Please call or text for more information about Trade-Ins or selling your car to us @ (214) 945-2601!

---

#(214) 945-2601

Call or Text **Anytime!**

Se habla Español

**WE BUY CARS!**

WWW.AUTOPARKDALLAS.COM

## Installed Options

### Interior

- AM/FM stereo w/in-dash 6-disc CD/MP3 changer-inc: radio data system (RDS), (6) speakers
- Aluminum foot pedals
- Aluminum interior trim-inc: instrument panel, door grips, door speaker grills
- Auto temp control w/carbon micro-filtration - Cargo net
- Center console w/auxiliary pwr outlet- Cruise control w/steering wheel mounted controls
- Dual front map reading lamps- Dual front/rear cup holders
- Exterior temp & digital compass display - Fine Vision lighting for instrumentation
- Fold-down rear seat w/center storage- Front & rear floor mats
- Illuminated entry/exit w/battery saver- Illuminated visor vanity mirrors
- Infiniti signature analog clock- Leather & aluminum trimmed shift knob
- Leather appointed seating surfaces

## Option Packages

### Factory Installed Packages

#### [J01] PWR SLIDING SUNROOF

-inc: tilt, glass sunroof w/one-touch open/close & safety reverse \$1,000

#### [P01] PREMIUM PKG

-inc: pwr sliding/tilt glass sunroof w/1-touch open/close, dual zone auto temp control w/rear vents, auto-dimming rearview mirror, Bose AM/FM stereo w/6-disc in-dash CD/MP3 changer, radio data system & (8) speakers, HomeLink universal transceiver, pwr tilt/telescopic steering wheel, driver seat &

- Perforated leather-wrapped tilt/telescopic steering wheel w/synchronized instrument cluster, illuminated cruise & audio controls, orange stitching
- Pwr heated front bucket seats-inc: 8-way pwr driver & 4-way pwr passenger adjustment, driver lumbar support, pwr access to rear seats
- Pwr windows w/illuminated switches-inc: front windows 1-touch up/down feature & safety reverse
- Rear window defogger w/timer- Rear window in-glass diversity antenna system
- Remote keyless entry w/trunk release & Intelligent Key
- Retained accessory pwr for windows- Satellite radio pre-wiring
- Tire pressure monitor warning light- Vehicle security system w/immobilizer

## Exterior

- High intensity discharge (HID) xenon headlamps w/auto on/off - Integrated fog lights
- LED tail lamps- Pwr heated mirrors- Tail lamp integrated trunk release
- UV-ray reducing glass- Unique front fascia & side sills
- Vehicle speed-sensitive intermittent windshield wipers

## Safety

- AM/FM stereo w/in-dash 6-disc CD/MP3 changer-inc: radio data system (RDS), (6) speakers
- Aluminum foot pedals
- Aluminum interior trim-inc: instrument panel, door grips, door speaker grills
- Auto temp control w/carbon micro-filtration- Cargo net
- Center console w/auxiliary pwr outlet- Cruise control w/steering wheel mounted controls
- Dual front map reading lamps- Dual front/rear cup holders
- Exterior temp & digital compass display - Fine Vision lighting for instrumentation
- Fold-down rear seat w/center storage- Front & rear floor mats
- Illuminated entry/exit w/battery saver- Illuminated visor vanity mirrors
- Infiniti signature analog clock- Leather & aluminum trimmed shift knob
- Leather appointed seating surfaces
- Perforated leather-wrapped tilt/telescopic steering wheel w/synchronized instrument cluster, illuminated cruise & audio controls, orange stitching
- Pwr heated front bucket seats-inc: 8-way pwr driver & 4-way pwr passenger adjustment, driver lumbar support, pwr access to rear seats
- Pwr windows w/illuminated switches-inc: front windows 1-touch up/down feature & safety reverse
- Rear window defogger w/timer- Rear window in-glass diversity antenna system
- Remote keyless entry w/trunk release & Intelligent Key
- Retained accessory pwr for windows- Satellite radio pre-wiring
- Tire pressure monitor warning light- Vehicle security system w/immobilizer

## Mechanical

- 19" x 8" 5-spoke performance design aluminum alloy wheels
- 3.5L DOHC SMPI 24-valve V6 aluminum engine
- 4-wheel anti-lock braking system (ABS)- 4-wheel vented pwr disc brakes
- 6-speed manual transmission w/OD, dual mass flywheel
- Advanced front midship platform- Continuously variable valve timing control system
- Direct ignition w/platinum-tipped spark plugs- Dual chrome exhaust finishers
- Electronic brake force distribution w/brake assist
- Engine-speed-sensitive pwr rack & pinion steering- Front/rear stabilizer bars
- Independent aluminum-alloy multi-link front/rear suspension
- P225/40YR19 front summer performance tires
- P245/40YR19 rear summer performance tires- Rear wheel drive
- Sport-tuned springs & shock absorbers - Traction control system (TCS)
- Vehicle dynamic control (VDC)- Viscous limited slip differential

steering wheel memory, Bluetooth hands-free phone system

## STANDARD PAINT

[B95] PAINTED BODY COLOR SPLASH GUARDS	\$210
--	-------

[M94] BODY SIDE MOLDING	\$150
-------------------------	-------

[T92] TRUNK MAT	\$80
-----------------	------

Option Packages Total	\$4,290
-----------------------	---------



View this car on our website at [autoparkdallas.com/7103250](https://autoparkdallas.com/7103250)

Website: [autoparkdallas.com](https://autoparkdallas.com)

Phone: (214) 945-2601

Map: 2061 S Stemmons Fwy, Lewisville, TX 75067

