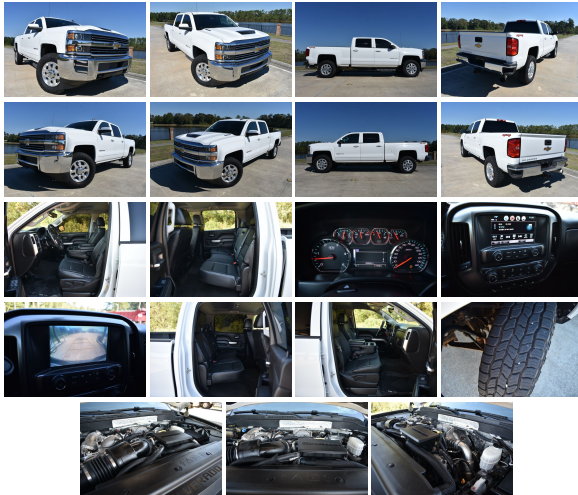


2018 Chevrolet Silverado 2500HD LT

View this car on our website at trucksinlouisiana.com/7102876/ebrochure



Our Price **\$41,250**

Retail Value **\$45,575**

Specifications:

Year:	2018
VIN:	1GC1KVEY4JF274486
Make:	Chevrolet
Model/Trim:	Silverado 2500HD LT
Condition:	Pre-Owned
Body:	Pickup Truck
Exterior:	White
Engine:	ENGINE, DURAMAX 6.6L TURBO-DIESEL V8, B20-DIESEL COMPATIBLE
Interior:	Gray
Mileage:	59,450
Drivetrain:	4 Wheel Drive

**WE HAVE OVER
\$54000 IN THIS
TRUCK !**

LOW MILES

DURAMAX DIESEL

LT PACKAGE

LEATHER SEATS

NEW TIRES

You are looking at a
2018 Chevrolet Silverado

2500HD Crew Cab LT 4x4. It is powered with a 6.6L Duramax Diesel V8 and an Allison automatic transmission. It is equipped with am/fm/radio, power windows, power locks, power mirrors, tilt, cruise, spray in bed liner, and receiver hitch. Also included is the owners manuals and one keyless remote.

The interior of this truck is in good shape for the miles. The seats are in good shape. The carpet is in good shape. Everything appears to function properly. It was not smoked in.

The exterior of this truck is in good shape. There maybe a normal flaw, but nothing significant . If you are a serious buyer please call us and we will give you a walk around to make sure it meets your expectations. The windshield is in good shape.

Mechanically this truck starts right up and runs good. The transmission shifts smooth. The a/c blows ice cold. The four wheel drive functions properly. The front end is tight . The tires are NEW.

NADA VALUES

ROUGH TRADE IN
\$37,475

AVERAGE TRADE IN
\$39,300

CLEAN TRADE IN \$40,800

RETAIL
\$45,575

This truck is located @ 13359
Miller Rd. Walker, LA 70785
Exit I-12 at the Walker Rd. Exit
15

If you have any questions
about this truck or would like
to receive a Carfax, please call
one of our
Sales Representatives @ 225-
445-5381 or 225-326-2639

VISIT WWW.TRUCKSINLOUISIANA.C

It is the customer's
responsibility to inspect the
truck before agreement to
purchase. Upon agreement to
purchase, there is a \$500
deposit due within 48
hours. The deposit is non
refundable unless a major
issue was not disclosed by the
seller. The remaining balance
is due via cash, cashiers
check, or bank wire within 5

days. If you need help with shipping call PJ @ All States Auto Transport: 1-866-342-1082, or 1-712-898-5727. There is also a mandatory \$195 Documentation charge.

At our dealership we work very hard to accurately describe our vehicles through text descriptions and elaborate photos. When you purchase a pre-owned vehicle it is not a new vehicle. Any used vehicle can have normal wear and blemishes. Before placing a bid please read the descriptions thoroughly, view all pictures and call one of our sales representatives for a complete walk a round description of the vehicle. All vehicles are sold as is no warranty.

Vehicle History Report : as Of 05/17/2024

CARFAX

Snapshot

2018 CHEVROLET SILVERADO 2500HD LT



No accidents or damage reported to CARFAX



11 Service history records



At least 1 open recall



CARFAX 1-Owner vehicle



Rental vehicle



60,716 Last reported odometer reading



FREE CARFAX Report

See the full CARFAX Report for additional information

*carfax Snapshot is a reflection of available information on the date the report was pulled. carfax is constantly being updated with new information and is subject to change at any time.

Our Location :



2018 Chevrolet Silverado 2500HD LT

Boardwalk Motorcars LLC - 225-326-2639 - View this car on our website at trucksinlouisiana.com/7102876/ebrochure

Installed Options

Interior

- Air conditioning, single-zone- Cruise control, steering wheel-mounted- Door locks, power
- Floor covering, color-keyed carpeting with rubberized vinyl floor mats (Double Cab and Crew Cabs include second row floor mats)
- Remote Keyless Entry- Seat trim, Cloth
- Seats, front 40/20/40 split-bench, 3-passenger. Available in cloth or leather. Includes driver and front passenger recline with outboard head restraints and center fold-down armrest with storage. Also includes manually adjustable driver lumbar, lockable storage compartment in seat cushion, and storage pockets. (Leather with (KA1) heat is an available extra charge option with (H1Y) Jet Black leather appointed interior trim and requires (PCM) LT Convenience Package. Upgradeable to (A95) front bucket cloth seats.) (Leather with (KA1) heat is an available extra charge option with (H1Y) Jet Black leather appointed interior trim and requires (PCY) LT Fleet Convenience Package. Upgradeable to (A95) front bucket cloth seats.)
- Steering column, manual Tilt-Wheel- Steering wheel audio controls
- Steering wheel, leather-wrapped with audio and cruise controls
- Windows, power with driver express up and down and express down on all other windows
- Assist handle, front passenger and driver on A-pillars
- Driver Information Center, 4.2-inch diagonal color display includes driver personalization, warning messages and vehicle information
- Instrumentation, 6-gauge cluster featuring speedometer, fuel level, engine temperature, tachometer, voltage and oil pressure
- Seat, rear 60/40 folding bench (folds up), 3-passenger (includes child seat top tether anchor) (Requires Crew Cab or Double Cab models.)
- Visors, driver and front passenger illuminated vanity mirrors

Exterior

- Mirrors, outside heated power-adjustable (includes driver's side spotter mirror) (Body-color.)
- Tires, LT245/75R17E all-season, blackwall
- Wheels, 17" (43.2 cm) machined aluminum includes 17" x 7.5" (43.2 cm x 19.1 cm) steel

spare wheel. Spare not included with (ZW9) pickup box delete unless a spare tire is ordered. (Upgradeable to (PYV) 18" (45.7 cm) chromed aluminum wheels, (RT4) 18" (45.7 cm) Black aluminum wheels, (RTH) 20" (50.8 cm) polished aluminum with Dark Argent Metallic pockets wheels or (PYU) 20" (50.8 cm) polished aluminum wheels.) (Upgradeable to (PYV) 18" (45.7 cm) chromed aluminum wheels, (RT4) 18" (45.7 cm) Black aluminum wheels, (RTH) 20" (50.8 cm) polished aluminum with Dark Argent Metallic pockets wheels, (PYT) 18" painted steel wheels or (PYU) 20" (50.8 cm) polished aluminum wheels.)

- Bumper, front chrome
- Bumper, rear chrome with bumper CornerSteps (Requires (E63) pickup box.)
- CornerStep, rear bumper (Requires (E63) pickup box.) - Door handles, body-color
- Glass, deep-tinted- Grille surround, chrome- Headlamps, halogen projector-beam
- Lamps, cargo area, cab mounted with switch on center switch bank
- Mirror caps, body-color- Moldings, bodyside, body color- Remote Locking Tailgate
- Tailgate and bed rail protection caps, top
- Tailgate, EZ-Lift and Lower (Deleted with (ZW9) pickup box delete is ordered.)
- Tire carrier lock keyed cylinder lock that utilizes same key as ignition and door (Not included when (ZW9) pickup box delete or (9J4) rear bumper delete is ordered.)
- Wheelhouse liners, rear (Requires Crew Cab or Double Cab model. Deleted with (ZW9) pickup box delete is ordered.)

Safety

- Air conditioning, single-zone- Cruise control, steering wheel-mounted- Door locks, power
- Floor covering, color-keyed carpeting with rubberized vinyl floor mats (Double Cab and Crew Cabs include second row floor mats)
- Remote Keyless Entry- Seat trim, Cloth
- Seats, front 40/20/40 split-bench, 3-passenger. Available in cloth or leather. Includes driver and front passenger recline with outboard head restraints and center fold-down armrest with storage. Also includes manually adjustable driver lumbar, lockable storage compartment in seat cushion, and storage pockets. (Leather with (KA1) heat is an available extra charge option with (H1Y) Jet Black leather appointed interior trim and requires (PCM) LT Convenience Package. Upgradeable to (A95) front bucket cloth seats.) (Leather with (KA1) heat is an available extra charge option with (H1Y) Jet Black leather appointed interior trim and requires (PCY) LT Fleet Convenience Package. Upgradeable to (A95) front bucket cloth seats.)
- Steering column, manual Tilt-Wheel- Steering wheel audio controls
- Steering wheel, leather-wrapped with audio and cruise controls
- Windows, power with driver express up and down and express down on all other windows
- Assist handle, front passenger and driver on A-pillars
- Driver Information Center, 4.2-inch diagonal color display includes driver personalization, warning messages and vehicle information
- Instrumentation, 6-gauge cluster featuring speedometer, fuel level, engine temperature, tachometer, voltage and oil pressure
- Seat, rear 60/40 folding bench (folds up), 3-passenger (includes child seat top tether anchor) (Requires Crew Cab or Double Cab models.)
- Visors, driver and front passenger illuminated vanity mirrors

Mechanical

- Engine, Vortec 6.0L Variable Valve Timing V8 SFI, E85-compatible, FlexFuel capable of running on unleaded or up to 85% ethanol (360 hp [268.4 kW] @ 5400 rpm, 380 lb-ft of torque [515.0 N-m] @ 4200 rpm) (Does not include E85 capability with (ZW9) pickup box delete.)
- Recovery hooks, front, frame-mounted, black
- Steering, Digital Steering Assist (Requires Double Cab models and (L5P) Duramax 6.6L Turbo-Diesel V8 engine or Crew Cab models.)
- Steering, Recirculating Ball with smart flow power steering system
- Transmission, 6-speed automatic, heavy-duty, electronically controlled with overdrive and tow/haul mode. Includes Cruise Grade Braking and Powertrain Grade Braking (Requires (L96) Vortec 6.0L V8 SFI engine or (LC8) 6.0L V8 SFI Gaseous CNG/LPG capable engine.)
- Air cleaner, high-capacity- Alternator, 150 amps
- Battery, heavy-duty 720 cold-cranking amps/80 Amp-hr, maintenance-free with rundown protection and retained accessory power
- Brakes, 4-wheel antilock, 4-wheel disc with DuraLife brake rotors
- Capless Fuel Fill (Gas engine only. Not available with (ZW9) pickup box delete.)
- Cooling, auxiliary external transmission oil cooler- Cooling, external engine oil cooler
- Differential, heavy-duty locking rear
- Exhaust, aluminized stainless-steel muffler and tailpipe- Four wheel drive
- Frame, fully-boxed, hydroformed front section
- GVWR, 9500 lbs. (4309 kg) (Requires (L96) Vortec 6.0L V8 SFI engine or (LC8) 6.0L V8 SFI Gaseous CNG/LPG capable engine. Not available with CK25943 or CC25903 model.)
- Pickup box
- Rear axle, 4.10 ratio (Requires (L96) Vortec 6.0L V8 SFI engine or (LC8) 6.0L V8 SFI Gaseous CNG/LPG capable engine.)
- Suspension Package, Standard includes 51mm twin tube shock absorbers and 33mm front stabilizer bar
- Transfer case, electronic shift with rotary dial controls (Requires 4WD models.)

