

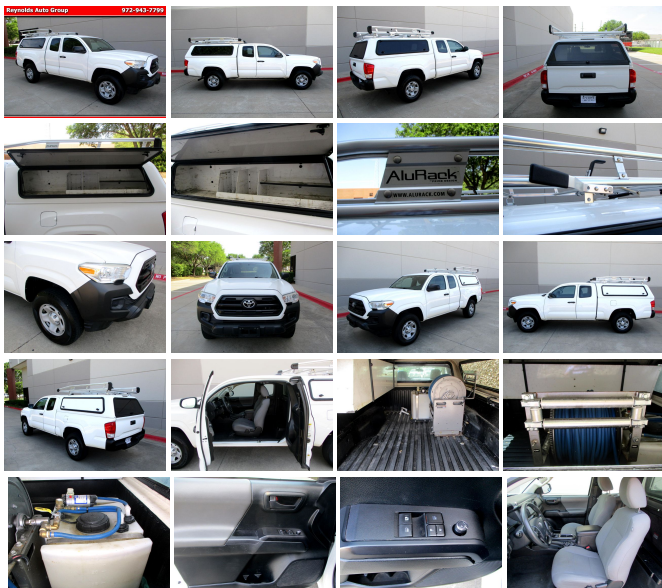
# 2017 Toyota Tacoma SR5

View this car on our website at [reynoldsautotx.com/7102708/ebrochure](http://reynoldsautotx.com/7102708/ebrochure)

**Reynolds Auto Group** 972-943-7799



[reynoldsautogrouptx.com](http://reynoldsautogrouptx.com)



Our Price **\$24,878**

## Specifications:

<b>Year:</b>	2017
<b>VIN:</b>	5TFRX5GN0HX091064
<b>Make:</b>	Toyota
<b>Stock:</b>	091064
<b>Model/Trim:</b>	Tacoma SR5
<b>Condition:</b>	Pre-Owned
<b>Body:</b>	Pickup Truck
<b>Exterior:</b>	White
<b>Engine:</b>	Engine: 2.7L I-4 DOHC 16-Valve -inc: cast iron block w/aluminum alloy head and VVT-i
<b>Interior:</b>	Gray Cloth
<b>Mileage:</b>	99,075
<b>Drivetrain:</b>	Rear Wheel Drive
<b>Economy:</b>	City 19 / Highway 23

This lease return is just arrived, and it is one of the nicest one's we had. We have had about twenty-five of these trucks in the past and they have all been real good trucks, but this is the nicest one of the bunch. It has eighteen service records and it runs and drives like a new one. There are many extras like the fiberglass shell with storage bins and a ladder rack plus a full bed liner. You can tell by looking the this vehicle has been well taken care of. It has power windows and door locks with tilt wheel and cruise control, back up camera and ice cold A/C. The four cylinder engine runs perfect and we have just had it inspected for any mechanical or electrical issues and none was found. All of the options work like they were designed to. The interior is in fantastic condition as is the outside. There are no dings or dents and the paint shines like a new one. If your in the market for a real good work truck that will bring you years of service then you may want to put this truck on your list. Just to let you know we are a family owned and operated business since 1959. If you have any questions at all or would like to make an appointment just give Rocky Reynolds a call or text to 214-542-7794. We would appreciate the opportunity to earn your business.

2017 Toyota Tacoma SR5

Reynolds Auto Group - 972-943-7799 - View this car on our website at [reynoldsautotx.com/7102708/ebrochure](http://reynoldsautotx.com/7102708/ebrochure)

## Our Location :



2017 Toyota Tacoma SR5

Reynolds Auto Group - 972-943-7799 - View this car on our website at [reynoldsautotx.com/7102708/ebrochure](http://reynoldsautotx.com/7102708/ebrochure)

## Installed Options

### Interior

- Gauges -inc: Speedometer, Odometer, Engine Coolant Temp, Tachometer, Trip Odometer and Trip Computer
- Remote Keyless Entry System- Fabric Seat Trim (FC)
- Power Door Locks w/Autolock Feature- Trip Computer
- Front Bucket Seats -inc: 4-way adjustable front seats w/drivers lumbar support
- Driver Seat- Passenger Seat- Jump Front Facing Fold-Up Cushion Rear Seat
- Manual Tilt/Telescoping Steering Column- Fixed Rear Windows
- Entune Selective Service Internet Access- Leather/Metal-Look Steering Wheel
- Front Cupholder- Rear Cupholder- Cruise Control- Manual Air Conditioning
- Locking Glove Box- Driver Foot Rest
- Interior Trim -inc: Cloth Instrument Panel Insert, Metal-Look Door Panel Insert, Metal-Look Console Insert and Chrome/Metal-Look Interior Accents
- Full Cloth Headliner- Cloth Door Trim Insert- Urethane Gear Shifter Material
- Day-Night Rearview Mirror
- Full Floor Console w/Covered Storage, Mini Overhead Console w/Storage, Rear Console w/Storage and 2 12V DC Power Outlets
- Front Map Lights- Fade-To-Off Interior Lighting- Full Carpet Floor Covering
- Instrument Panel Bin, Interior Concealed Storage, Driver / Passenger And Rear Door Bins and 2nd Row Underseat Storage
- Power 1st Row Windows w/Driver 1-Touch Down- Delayed Accessory Power
- Outside Temp Gauge- Analog Appearance- Seats w/Cloth Back Material
- Manual Anti-Whiplash Adjustable Front Head Restraints and Fixed Rear Head Restraints
- Front Center Armrest- Engine Immobilizer- 2 12V DC Power Outlets- Air Filtration

### Exterior

- Wheels: 16" x 7J+30 Style Steel Disc- Manual Tailgate/Rear Door Lock
- Tires: P245/75R16 AS- Regular Composite Box Style- Wheels w/Machined Accents
- Steel Spare Wheel- Full-Size Spare Tire Stored Underbody w/Crankdown
- Clearcoat Paint- Body-Colored Front Bumper w/1 Tow Hook

- Step Bumper w/Black Rub Strip/Fascia Accent- Chrome Rear Bumper
- Black Side Windows Trim, Black Front Windshield Trim and Black Rear Window Trim
- Body-Colored Door Handles- Body-Colored Fender Flares
- Body-Colored Manual Remote Side Mirrors w/Manual Folding
- Sliding Rear Window w/Privacy Glass- Variable Intermittent Wipers
- Fully Galvanized Steel Panels- Black Grille w/Chrome Surround
- Reverse Opening Rear Doors- Tailgate Rear Cargo Access- Integrated Storage
- Auto Off Projector Beam Halogen Headlamps- Daytime Running Lamps -inc: black bezel
- Front Fog Lamps -inc: driving lamps

---

## Safety

- Gauges -inc: Speedometer, Odometer, Engine Coolant Temp, Tachometer, Trip Odometer and Trip Computer
- Remote Keyless Entry System- Fabric Seat Trim (FC)
- Power Door Locks w/Autolock Feature- Trip Computer
- Front Bucket Seats -inc: 4-way adjustable front seats w/drivers lumbar support
- Driver Seat- Passenger Seat- Jump Front Facing Fold-Up Cushion Rear Seat
- Manual Tilt/Telescoping Steering Column- Fixed Rear Windows
- Entune Selective Service Internet Access- Leather/Metal-Look Steering Wheel
- Front Cupholder- Rear Cupholder- Cruise Control- Manual Air Conditioning
- Locking Glove Box- Driver Foot Rest
- Interior Trim -inc: Cloth Instrument Panel Insert, Metal-Look Door Panel Insert, Metal-Look Console Insert and Chrome/Metal-Look Interior Accents
- Full Cloth Headliner- Cloth Door Trim Insert- Urethane Gear Shifter Material
- Day-Night Rearview Mirror
- Full Floor Console w/Covered Storage, Mini Overhead Console w/Storage, Rear Console w/Storage and 2 12V DC Power Outlets
- Front Map Lights- Fade-To-Off Interior Lighting- Full Carpet Floor Covering
- Instrument Panel Bin, Interior Concealed Storage, Driver / Passenger And Rear Door Bins and 2nd Row Underseat Storage
- Power 1st Row Windows w/Driver 1-Touch Down- Delayed Accessory Power
- Outside Temp Gauge- Analog Appearance- Seats w/Cloth Back Material
- Manual Anti-Whiplash Adjustable Front Head Restraints and Fixed Rear Head Restraints
- Front Center Armrest- Engine Immobilizer- 2 12V DC Power Outlets- Air Filtration

---

## Mechanical

- Engine: 2.7L I-4 DOHC 16-Valve -inc: cast iron block w/aluminum alloy head and VVT-i
- Transmission: 6-Speed Automatic -inc: electronically controlled w/intelligence
- Axle Ratio: 4.30- GVWR: 5,600 lbs- Rear-Wheel Drive- Battery w/Run Down Protection
- 1 Skid Plate- 1620# Maximum Payload- Gas-Pressurized Shock Absorbers
- Front Anti-Roll Bar- Hydraulic Power-Assist Speed-Sensing Steering- 21.1 Gal. Fuel Tank
- Single Stainless Steel Exhaust- Double Wishbone Front Suspension w/Coil Springs
- Leaf Rear Suspension w/Leaf Springs
- Front Disc/Rear Drum Brakes w/4-Wheel ABS, Front Vented Discs, Brake Assist, Hill Descent Control and Hill Hold Control
- Brake Actuated Limited Slip Differential

<h3> <strong>All advertised prices exclude government fees and taxes, any dealer document preparation charge, and any emission testing charge. The price for listed vehicles as equipped does not include charges such as: License, Title, Registration Fees, State or Local Taxes, Dealer Prep, Smog Fees, or Delivery Fees. DEALER makes no representations, expressed or implied, to any actual or prospective purchaser or owner of this vehicle as to the existence, ownership, accuracy, description or condition of the listed vehicle's equipment, accessories, price, specials or any warranties. Any and all differences must be addressed prior to the sale of this vehicle.</strong></h3>

---

Reynolds Auto Group

[reynoldsautotx.com](http://reynoldsautotx.com)

972-943-7799

1701 Capital Ave

Plano, Texas 75074

© 2024 AutoRevo - All rights reserved. - Powered by AutoRevo