

2019 Volkswagen Atlas 3.6L V6 SEL Premium

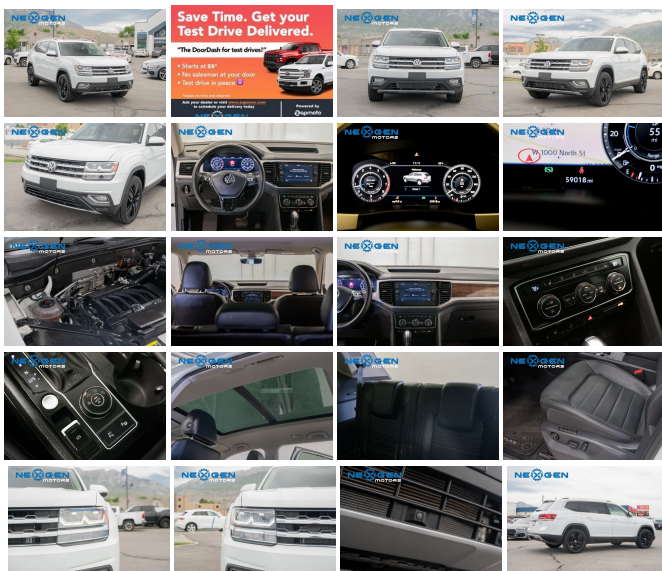
View this car on our website at nexgenmotorsutah.com/7101408/ebrochure



Our Price **\$32,000**

Specifications:

Year:	2019
VIN:	1V2NR2CA2KC502066
Make:	Volkswagen
Stock:	502066
Model/Trim:	Atlas 3.6L V6 SEL Premium
Condition:	Pre-Owned
Body:	SUV
Exterior:	Pure White
Engine:	Engine: 3.6L VR6 DOHC 24-Valve -inc: FSI direct fuel injection and start/stop system
Interior:	Black Leather
Mileage:	59,098
Drivetrain:	All Wheel Drive
Economy:	City 17 / Highway 23



2019 Volkswagen Atlas 3.6L V6 SEL Premium

Nexgen Motors - 801-874-3747 - View this car on our website at nexgenmotorsutah.com/7101408/ebrochure

Our Location :



2019 Volkswagen Atlas 3.6L V6 SEL Premium

Nexgen Motors - 801-874-3747 - View this car on our website at nexgenmotorsutah.com/7101408/ebrochure

Installed Options

Interior

- Fixed 50-50 Split-Bench 3rd Row Seat Front, 2 Manual and Adjustable Head Restraints
- Heated Leather/Piano Black Steering Wheel- Front Cupholder- Rear Cupholder
- Compass- Valet Function- Power Fuel Flap Locking Type
- Remote Keyless Entry w/Integrated Key Transmitter, 4 Door Curb/Courtesy, Illuminated Entry and Panic Button
- Proximity Key For Doors And Push Button Start
- Remote Releases -Inc: Proximity Cargo Access- HomeLink Garage Door Transmitter
- Cruise Control w/Steering Wheel Controls- Distance Pacing w/Traffic Stop-Go
- Rear HVAC w/Separate Controls
- HVAC -inc: Underseat Ducts, Headliner/Pillar Ducts and Console Ducts
- Dual Zone Front Automatic Air Conditioning- Illuminated Locking Glove Box
- Driver Foot Rest- Full Cloth Headliner- Leatherette Door Trim Insert
- Leather/Chrome Gear Shifter Material- Memory Settings -inc: Door Mirrors
- Instrument Panel Covered Bin, Dashboard Storage, Driver / Passenger And Rear Door Bins and 1st Row Underseat Storage
- Power 1st Row Windows w/Front And Rear 1-Touch Up/Down - Delayed Accessory Power
- Power Door Locks w/Autolock Feature- Systems Monitor
- Redundant Digital Speedometer- Trip Computer- Outside Temp Gauge
- Digital/Analog Appearance
- Manual Adjustable Front Head Restraints and Manual Adjustable Rear Head Restraints
- 2 Seatback Storage Pockets- Seats w/Leatherette Back Material
- Front Center Armrest and Rear Center Armrest- Engine Immobilizer- Perimeter Alarm
- 3 12V DC Power Outlets- Air Filtration
- 3 12V DC Power Outlets and 1 120V AC Power Outlet
- Htd/Actively Ventilated Comfort Front Bucket Seats -inc: 10-way power driver's seat w/power lumbar support, driver's seat position memory and 8-way power passenger seat
- 8-Way Driver Seat- Passenger Seat
- 60-40 Folding Split-Bench Front Facing Heated Manual Reclining Fold Forward Seatback Rear Seat w/Manual Fore/Aft

- Manual Tilt/Telescoping Steering Column
- Gauges -inc: Speedometer, Odometer, Engine Coolant Temp, Tachometer, Altimeter, Trip Odometer and Trip Computer
- Power Rear Windows, Fixed 3rd Row Windows and w/Manual Sun Blinds
- VW Car-Net Selective Service Internet Access
- Full Carpet Floor Covering -inc: Carpet Front And Rear Floor Mats
- Cargo Area Concealed Storage- Trunk/Hatch Auto-Latch- Cargo Space Lights
- Tracker System- FOB Controls -inc: Cargo Access and Remote Engine Start
- Interior Trim -inc: Simulated Wood Instrument Panel Insert, Simulated Wood Door Panel Insert, Piano Black Console Insert and Metal-Lock Interior Accents
- Perforated Vienna Leather Seating Surfaces
- Driver And Passenger Visor Vanity Mirrors w/Driver And Passenger Illumination, Driver And Passenger Auxiliary Mirror
- Day-Night Auto-Dimming Rearview Mirror
- Full Floor Console w/Covered Storage, Mini Overhead Console, 3 12V DC Power Outlets and 1 120V AC Power Outlet
- Front And Rear Map Lights- Fade-To-Off Interior Lighting- Carpet Floor Trim

Exterior

- Body-Colored Front Bumper w/Metal-Look Rub Strip/Fascia Accent
- Body-Colored Rear Bumper w/Metal-Look Rub Strip/Fascia Accent and Chrome Bumper Insert
- Chrome Side Windows Trim and Black Front Windshield Trim
- Body-Colored Door Handles
- Chrome Bodyside Insert, Black Bodyside Cladding and Black Wheel Well Trim
- Body-Colored Power Heated Side Mirrors w/Power Folding and Turn Signal Indicator
- Fixed Rear Window w/Fixed Interval Wiper and Defroster - Deep Tinted Glass
- Rain Detecting Variable Intermittent Wipers w/Heated Jets - Fully Galvanized Steel Panels
- Lip Spoiler- Black Grille w/Chrome Accents- Power Liftgate Rear Cargo Access
- Tailgate/Rear Door Lock Included w/Power Door Locks- Roof Rack Rails Only
- Front Fog Lamps- Cornering Lights- Perimeter/Approach Lights- LED Brakelights
- Programmable Aero-Composite Led Low/High Beam Daytime Running Auto-Leveling Auto High-Beam Headlamps w/Delay-Off
- Headlights-Automatic Highbeams
- Express Open/Close Sliding And Tilting Glass 1st And 2nd Row Sunroof w/Power Sunshade
- Clearcoat Paint Compact Spare Tire Mounted Inside Under Cargo- Steel Spare Wheel
- Tires: 20" All-Season- Wheels: 20" Silver Triple 5-Spoke Alloy

Safety

- Fixed 50-50 Split-Bench 3rd Row Seat Front, 2 Manual and Adjustable Head Restraints
- Heated Leather/Piano Black Steering Wheel- Front Cupholder- Rear Cupholder
- Compass- Valet Function- Power Fuel Flap Locking Type
- Remote Keyless Entry w/Integrated Key Transmitter, 4 Door Curb/Courtesy, Illuminated Entry and Panic Button
- Proximity Key For Doors And Push Button Start
- Remote Releases -inc: Proximity Cargo Access- HomeLink Garage Door Transmitter
- Cruise Control w/Steering Wheel Controls- Distance Pacing w/Traffic Stop-Go
- Rear HVAC w/Separate Controls
- HVAC -inc: Underseat Ducts, Headliner/Pillar Ducts and Console Ducts
- Dual Zone Front Automatic Air Conditioning- Illuminated Locking Glove Box
- Driver Foot Rest- Full Cloth Headliner- Leatherette Door Trim Insert
- Leather/Chrome Gear Shifter Material- Memory Settings -inc: Door Mirrors
- Instrument Panel Covered Bin, Dashboard Storage, Driver / Passenger And Rear Door Bins and 1st Row Underseat Storage
- Power 1st Row Windows w/Front And Rear 1-Touch Up/Down - Delayed Accessory Power
- Power Door Locks w/Autolock Feature- Systems Monitor
- Redundant Digital Speedometer- Trip Computer- Outside Temp Gauge
- Digital/Analog Appearance
- Manual Adjustable Front Head Restraints and Manual Adjustable Rear Head Restraints
- 2 Seatback Storage Pockets- Seats w/Leatherette Back Material
- Front Center Armrest and Rear Center Armrest- Engine Immobilizer- Perimeter Alarm
- 3 12V DC Power Outlets- Air Filtration
- 3 12V DC Power Outlets and 1 120V AC Power Outlet
- Htd/Actively Ventilated Comfort Front Bucket Seats -inc: 10-way power driver's seat w/power lumbar support, driver's seat position memory and 8-way power passenger seat
- 8-Way Driver Seat- Passenger Seat
- 60-40 Folding Split-Bench Front Facing Heated Manual Reclining Fold Forward Seatback Rear Seat w/Manual Fore/Aft
- Manual Tilt/Telescoping Steering Column
- Gauges -inc: Speedometer, Odometer, Engine Coolant Temp, Tachometer, Altimeter, Trip Odometer and Trip Computer
- Power Rear Windows, Fixed 3rd Row Windows and w/Manual Sun Blinds

- VW Car-Net Selective Service Internet Access
- Full Carpet Floor Covering -inc: Carpet Front And Rear Floor Mats
- Cargo Area Concealed Storage- Trunk/Hatch Auto-Latch- Cargo Space Lights
- Tracker System- FOB Controls -inc: Cargo Access and Remote Engine Start
- Interior Trim -inc: Simulated Wood Instrument Panel Insert, Simulated Wood Door Panel Insert, Piano Black Console Insert and Metal-Look Interior Accents
- Perforated Vienna Leather Seating Surfaces
- Driver And Passenger Visor Vanity Mirrors w/Driver And Passenger Illumination, Driver And Passenger Auxiliary Mirror
- Day-Night Auto-Dimming Rearview Mirror
- Full Floor Console w/Covered Storage, Mini Overhead Console, 3 12V DC Power Outlets and 1 120V AC Power Outlet
- Front And Rear Map Lights- Fade-To-Off Interior Lighting- Carpet Floor Trim

Mechanical

- 4-Wheel Disc Brakes w/4-Wheel ABS, Front Vented Discs, Brake Assist, Hill Descent Control, Hill Hold Control and Electric Parking Brake
- Multi-Link Rear Suspension w/Coil Springs- Strut Front Suspension w/Coil Springs
- Permanent Locking Hubs- Quasi-Dual Stainless Steel Exhaust- 18.6 Gal. Fuel Tank
- Electro-Hydraulic Power Assist Speed-Sensing Steering- Front And Rear Anti-Roll Bars
- Gas-Pressurized Shock Absorbers- 1213# Maximum Payload
- Class III Towing Equipment -inc: Hitch- Full-Time All-Wheel
- Transmission w/Driver Selectable Mode- GVWR: 2,720 kgs (5,997 lbs)
- Standard Suspension- 3.60 Axle Ratio- Transmission: 8-Speed Automatic w/Tiptronic
- Engine: 3.6L VR6 DOHC 24-Valve -inc: FSI direct fuel injection and start/stop system

Nexgen Motors

nexgenmotorsutah.com

801-874-3747

986 N State St.

Orem, UT 84057

© 2023 AutoRevo - All rights reserved. - Powered by AutoRevo