

2002 Peterbilt 379

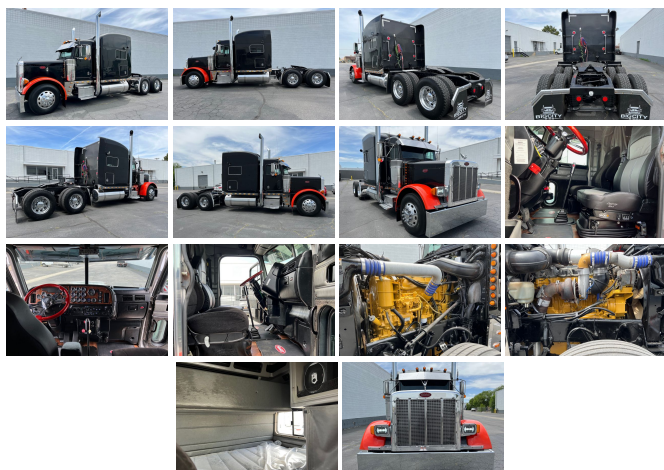
View this car on our website at bigcityrigs.com/7100358/ebrochure



Our Price **\$0**

Specifications:

Year:	2002
VIN:	580677
Make:	Peterbilt
Model/Trim:	379
Condition:	Pre-Owned
Exterior:	Black
Interior:	Black
Mileage:	1,190,000
Truck Type:	Semi - Sleeper Conventional



Pre Emission Sleeper
Peterbilt 379
2002 - No DPF / No DEF
70" Double Bunk Sleeper
Cat Power - 490 HP
C15 - 6NZ!
9K Miles On Odometer
1.1M Miles on ECM
13 Speed Transmission
250 Wheel Base
373 Ratio
12K Front / 38K Rear Axle
Low Air Leaf Suspension
22.5 Rubber
(2) 100 Gallon Fuel Tanks
Dual Stacks
Dual Air Cleaners
Legacy Gold Seat
Hard Flooring
Serviced
Ready To Roll

This truck has a ton of power and runs really smoothly. New mattress, fenders, lights, 7" Chino Tip Pipes, 20" American Eagle Bumper, sand blasted/ painted frame, polished, charged AC and DOT Inspected.

To see if this rig is available check out our website. Or follow us on instagram @bigcityrigsales - www.BigCityRigs.com - 801.889.0714 - Dealer 225B

Our Location :



2002 Peterbilt 379

Big City Rigs - 801-435-0900 - View this car on our website at bigcityrigs.com/7100358/ebrochure

Installed Options

The Detailed Equipment Information is limited in scope, and Big City Rigs (BCR) has not inspected any aspects or components of the equipment other than those expressly set forth herein. Unless expressly stated, we make no representations or warranties, express or implied, concerning the equipment or its components, including without limitation any representations or warranties concerning functionality, conformity or compliance with any safety standard or requirement of any applicable authority or regulatory body, fitness for any particular purpose, or merchantability. You are strongly advised to perform your own detailed inspection of the equipment prior to purchasing.

Big City Rigs

bigcityrigs.com

801-435-0900

1090 S Pioneer Rd

Salt Lake City, UT 84104

© 2024 AutoRevo - All rights reserved. - Powered by AutoRevo