



## 2009 Chevrolet Corvette w/4LT Supercharged

**Website Price \$30,995**

View this vehicle on our website at [autoparkdallas.com](http://autoparkdallas.com)



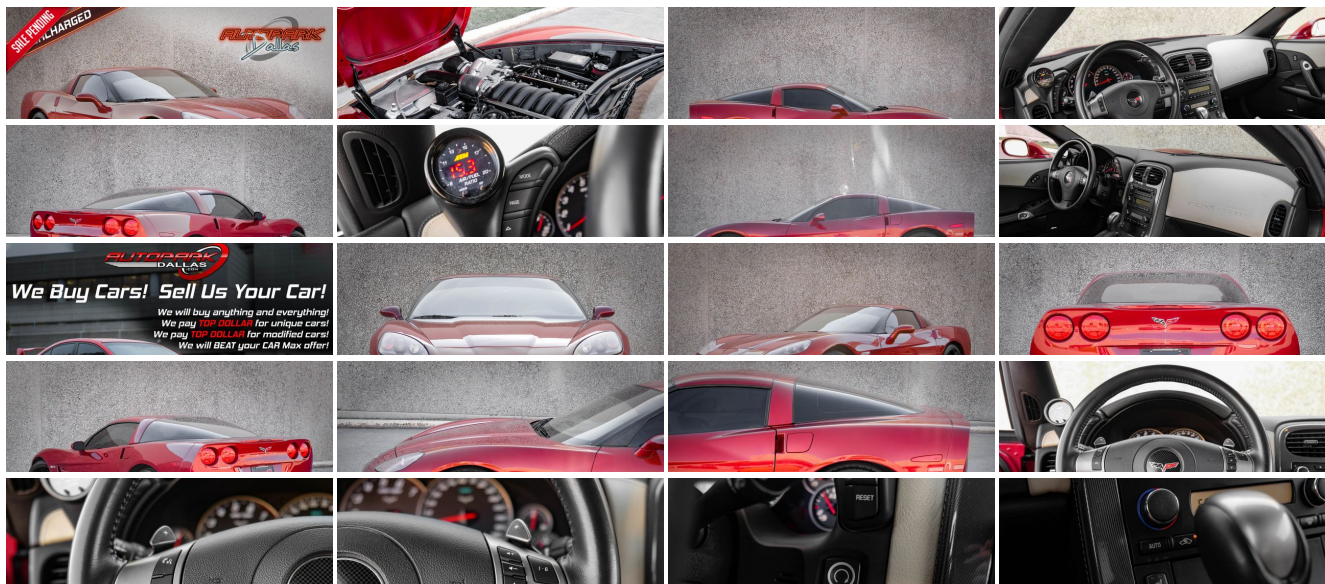
(214) 945-2601

2061 S Stemmons Fwy , Lewisville, TX 75067

Photos

Details

Contact



Specifications:

Year:	2009
VIN:	1G1YY26W595110246
Make:	Chevrolet
Model/Trim:	Corvette w/4LT Supercharged
Condition:	Pre-Owned
Body:	Coupe
Exterior:	Crystal Red Met Tintcoat
Engine:	ENGINE, 6.2L V8 SFI
Interior:	White Leather
Mileage:	43,224
Drivetrain:	Rear Wheel Drive
Economy:	City 15 / Highway 25

Vehicle Description

Installed Options	Option Packages
<div>Interior<div><ul style="list-style-type: none"><li>- Custom Leather Wrapped Interior Package features leather-wrapped upper instrument panel, upper door trim panels and console storage cover. Exclusive leather color and two-tone design includes seat headrest "tonal" crossed flag embroidery and enhanced armrest padding. Special Bias pattern console trim plate</li><li>- Door locks, power programmable with lockout protection</li><li>- Keyless Access with push button start and 2 remote transmitters that enable automatic door unlock and open by touching door switch</li><li>- Memory Package recalls 2 driver "presets" for 6-way power seat, outside mirrors and telescoping steering column</li><li>- Seat adjuster, driver 6-way power</li><li>- Seats, Sport front bucket with perforated leather seating surfaces includes back angle adjustment, adjustable lumbar and side bolsters</li><li>- Steering column, Tilt-Wheel, manual- Steering column, power telescopic with manual tilt</li><li>- Theft-deterrent system, vehicle push button start, immobilizer and audible visual alarm</li><li>- Air conditioning, dual-zone automatic climate control with individual climate settings for driver and right-front passenger and outside temperature display</li><li>- Air filtration system with pollen filter- Cargo net, in rear compartment area</li><li>- Console, floor 2 covered cup holders, ashtray with cigar lighter, auxiliary power outlet and CD storage</li><li>- Cruise control, electronic with set and resume speed - Defogger, rear-window, electric</li><li>- Floor mats, carpeted- Hatch release, push button open with power hatch pulldown</li><li>- Head-Up Display with dot-matrix readouts for street mode, track mode with g-meter, vehicle speed, engine rpm and readings from key gauges including water temperature and oil pressure</li><li>- Instrumentation, electronic analog with Driver Information Center and 2-line display</li><li>- Lighting, interior with courtesy, cargo and glovebox- Luggage shade</li><li>- Mirror, inside rearview auto-dimming with compass, includes dual reading lights</li><li>- Oil life monitoring system- Seat adjuster, front passenger 6-way power</li><li>- Seats, heated driver and front passenger</li><li>- Steering wheel controls, mounted audio controls</li><li>- Steering wheel, 3-spoke leather-wrapped</li><li>- Storage with lockable glovebox, center console and 2 rear compartments with covers</li><li>- Universal Home Remote includes garage door opener, 3-channel programmable, located on driver visor</li><li>- Visors, driver and front passenger illuminated vanity mirrors</li><li>- Windows, power with driver and passenger Express-Down</li></ul></div></div> <div>Exterior<div><ul style="list-style-type: none"><li>- Roof panel, 1-piece body-color, removable</li><li>- Tires, front P245/40ZR18 Eagle F1 extended mobility</li><li>- Tires, rear P285/35ZR19 Eagle F1 extended mobility</li><li>- Wheels, 5-split spoke, Silver-painted aluminum 18" x 8.5" (45.7 cm x 21.6 cm), front and 19" x 10.0 " (48.3 cm x 25.4 cm), rear</li><li>- Fog lamps, front, integral in front fascia- Glass, Solar-Ray light-tinted</li></ul></div></div>	<div>Factory Installed Packages</div> <div>ENGINE, 6.2L V8 SFI (430 hp [320.6 kW] @ 5900 rpm, 424 lb-ft of torque [572.4 N-m] @ 4600 rpm)</div> <div>PREFERRED EQUIPMENT GROUP includes Standard Equipment\$8,055</div> <div>Option Packages Total\$8,055</div>

- Headlamps, dual projector lamps, Xenon, High-Intensity Discharge (HID) low-beam tungsten-halogen high-beam with automatic exterior lamp control
- Mirrors, outside heated power-adjustable and driver-side auto-dimming, body- color
- Wipers, front intermittent

## Safety

- Custom Leather Wrapped Interior Package features leather-wrapped upper instrument panel, upper door trim panels and console storage cover. Exclusive leather color and two-tone design includes seat headrest "tonal" crossed flag embroidery and enhanced armrest padding. Special Bias pattern console trim plate
- Door locks, power programmable with lockout protection
- Keyless Access with push button start and 2 remote transmitters that enable automatic door unlock and open by touching door switch
- Memory Package recalls 2 driver "presets" for 6-way power seat, outside mirrors and telescoping steering column
- Seat adjuster, driver 6-way power
- Seats, Sport front bucket with perforated leather seating surfaces includes back angle adjustment, adjustable lumbar and side bolsters
- Steering column, Tilt-Wheel, manual- Steering column, power telescopic with manual tilt
- Theft-deterrent system, vehicle push button start, immobilizer and audible visual alarm
- Air conditioning, dual-zone automatic climate control with individual climate settings for driver and right-front passenger and outside temperature display
- Air filtration system with pollen filter- Cargo net, in rear compartment area
- Console, floor 2 covered cup holders, ashtray with cigar lighter, auxiliary power outlet and CD storage
- Cruise control, electronic with set and resume speed - Defogger, rear-window, electric
- Floor mats, carpeted- Hatch release, push button open with power hatch pulldown
- Head-Up Display with dot-matrix readouts for street mode, track mode with g-meter, vehicle speed, engine rpm and readings from key gauges including water temperature and oil pressure
- Instrumentation, electronic analog with Driver Information Center and 2-line display
- Lighting, interior with courtesy, cargo and glovebox- Luggage shade
- Mirror, inside rearview auto-dimming with compass, includes dual reading lights
- Oil life monitoring system- Seat adjuster, front passenger 6-way power
- Seats, heated driver and front passenger
- Steering wheel controls, mounted audio controls
- Steering wheel, 3-spoke leather-wrapped
- Storage with lockable glovebox, center console and 2 rear compartments with covers
- Universal Home Remote includes garage door opener, 3-channel programmable, located on driver visor
- Visors, driver and front passenger illuminated vanity mirrors
- Windows, power with driver and passenger Express-Down

## Mechanical

- Active handling improves traction and enhances vehicle stability
- Rear axle, 3.42 ratio, limited slip (Included and only available with (MN6) 6-speed manual transmission.)
- Transmission, 6-speed manual, short-throw (Includes (GU6) 3.42 axle ratio.)
- Brakes, 4-wheel antilock, 4-wheel disc- Engine access, rear-opening hood
- Engine, 6.2L V8 SFI (430 hp [320.6 kW] @ 5900 rpm, 424 lb-ft of torque [572.4 N-m] @ 4600 rpm)
- Exhaust, aluminized stainless-steel with 3" polished stainless-steel tips
- Rear wheel drive- Steering, power, speed-sensitive rack-and-pinion, variable ratio
- Suspension, 4-wheel independent includes transverse composite springs



Auto Park Dallas

View this car on our website at [autoparkdallas.com/7099444](http://autoparkdallas.com/7099444)

Website: [autoparkdallas.com](http://autoparkdallas.com)

Phone: (214) 945-2601

Map: 2061 S Stemmons Fwy, Lewisville, TX 75067

