



2006 Mercedes-Benz S S500

Our Price \$9,995

View this vehicle on our website at vsautoguy.com



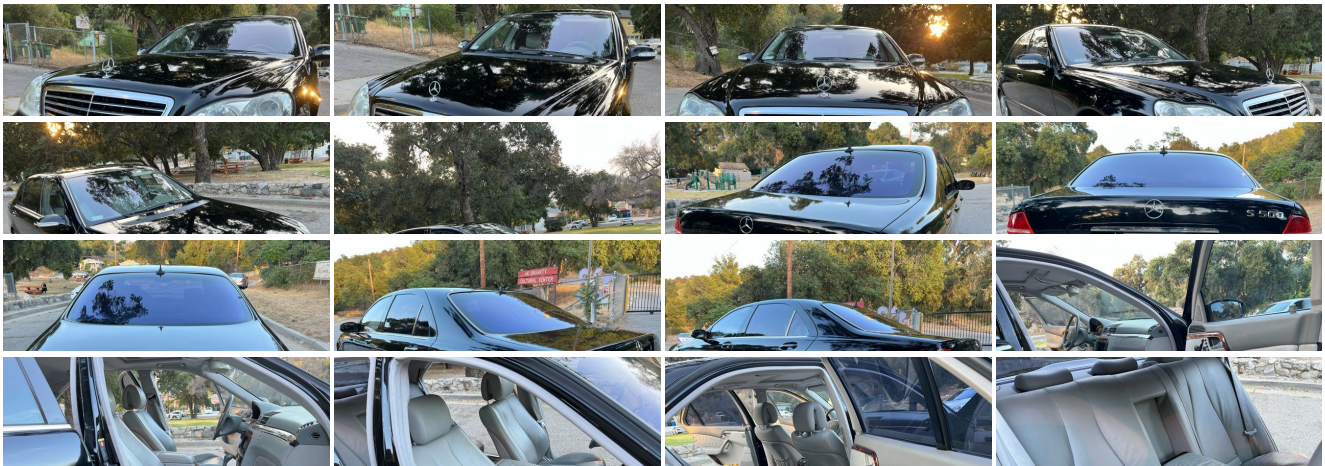
2132580007

7514 foothill Blvd , Tujunga, CA 91042

Photos

Details

Contact





Specifications:

Year:	2006
VIN:	WDBNG75JX6A482487
Make:	Mercedes-Benz
Model/Trim:	S S500
Condition:	Pre-Owned
Body:	Sedan
Exterior:	Black
Engine:	5.0L SOHC SMPI 24-valve aluminum-alloy V8 engine
Interior:	Stone Leather
Mileage:	82,321
Drivetrain:	Rear Wheel Drive
Economy:	City 16 / Highway 24

Vehicle Description

Installed Options

Interior

- 14-way pwr front heated adjustable bucket seats w/pneumatically adjustable lumbar support, drivers easy-exit courtesy seat folding adjustment, automatic height-adjusting front head restraints, 3-position memory
- AM/FM/weatherband radio w/CD-player, fiber-optic communication among components
- Automatic dual-zone climate control-inc: dust/pollen/charcoal filters, sun/smog/humidity/dewpoint/sun sensors, tunnel mode w/1-touch closing of all windows, REST mode w/engine heat recirculation feature or cabin ventilation, seat-belt sensors (allows climate control to focus first on occupied seats)
- COMAND cockpit management/data system-inc: DVD navigation system, AM/FM/weatherband radio, CD-player, 6.5" color LCD in-dash screen, (10) soft keys
- Cruise control w/digital readout- Hand polished Burl Walnut wood trim
- Hand-fitted glove-soft Nappa leather seating surfaces w/premium leather on remainder of seats
- Leather-trimmed steering wheel-inc: audio/multifunction display controls, memory, 4-way pwr tilt/telescoping steering column, easy exit feature
- SmartKey infrared-remote-inc: opening trunk, opening/closing windows/sunroof, panic alarm, fuel filler door, lock/unlock all doors or drivers
- SmartKey system-inc: remote central locking system, anti-theft engine immobilizer, driver-programmable user-recognition features, drive away automatic locking
- Tele Aid Global Positioning System (GPS) satellite system-inc: stolen vehicle, remote door unlock service, alarm/collision notification, dealer connect
- Velour floor mats/carpeting
- (4) illuminated vanity mirrors w/driver/front passenger magnifying/standard lenses
- Anti-theft alarm system w/towaway protection- Auto-dimming rearview mirror
- Automatic low-intensity environmental comfort lighting-inc: center console, door handles, footwells
- Bose (12) speaker Cabin Surround multi-channel digital sound system-inc: 10" Nd Neodymium Iron Boron high-efficiency woofer, Centerpoint signal processing, AudioPilot digital processor
- Dual front reading lamps/dual rear reading lamps
- Front center armrest w/(2) level storage-inc: upper level dual cup holders, climate controlled illuminated lower level
- Front seatback magazine pockets- HomeLink compatible 3-button garage door control
- Illuminated carpeted trunk w/tie-down hooks
- Instrumentation-inc: electroluminescent analog speedometer, tachometer, fuel/coolant/exterior temp gauges, digital clock, touch shift gear shift display, standard/comfort shift mode
- Leather trimmed shift knob- Locator lighting w/entrance lamps in all doors
- Mercedes-Benz Maintenance System Plus display-inc: distance remaining to next maintenance, type of service due, reminders
- Multifunction displays in speedometer face-inc: trip computer, Maintenance System, oil level check digital speedometer reminder/malfunction messages driver-programmable

level check, digital speedometer, reminder/malfunction messages, driver-programmable settings, cruise control, navigation system route guidance, tire pressure monitoring system, audio status

- Parcel net in RH footwell- Programmable night security illumination
- Pwr rear-window sunshade w/1-touch express up/down
- Pwr windows w/1-touch express up/down for all windows
- Rear center folding armrest w/cup holders, enclosed storage
- Rear window defroster w/auto-shutoff based on time/driving speed/exterior temp
- Stainless-steel door sill trim- Touch turn signals (flashes (3) times w/(1) touch)
- Warning lights/messages-inc: open door, exterior lamp failure, low fuel/oil/ coolant/washer fluid

Exterior

- Pneumatic door/trunk closing assist w/auto extending & retracting trunk handle
- Programmable daytime running lamps
- Bi-Xenon high intensity discharge high/low-beam headlamps-inc: polycarbonate lenses, automatic level control, halogen auxiliary high-beams, heated headlamp washers, driver-selectable light-sensing auto-on headlamps, automatic lamp substitution
- Dual aero-blade windshield wipers w/infrared rain sensor, heated washer system
- Dual pwr folding heated mirrors-inc: reverse tilt down RH mirror, auto- dimming driver mirror, memory, puddle lamps
- Halogen front fog lamps- Infrared-reflective glass w/laminated side-glass
- Pwr tilt/sliding tinted glass sunroof w/(1) touch express open/close, memory
- Single red rear fog lamp

Safety

- 14-way pwr front heated adjustable bucket seats w/pneumatically adjustable lumbar support, drivers easy-exit courtesy seat folding adjustment, automatic height-adjusting front head restraints, 3-position memory
- AM/FM/weatherband radio w/CD-player, fiber-optic communication among components
- Automatic dual-zone climate control-inc: dust/pollen/charcoal filters, sun/ smog/humidity/dewpoint/sun sensors, tunnel mode w/1-touch closing of all windows, REST mode w/engine heat recirculation feature or cabin ventilation, seat-belt sensors (allows climate control to focus first on occupied seats)
- COMAND cockpit management/data system-inc: DVD navigation system, AM/FM/ weatherband radio, CD-player, 6.5" color LCD in-dash screen, (10) soft keys
- Cruise control w/digital readout- Hand polished Burl Walnut wood trim
- Hand-fitted glove-soft Nappa leather seating surfaces w/premium leather on remainder of seats
- Leather-trimmed steering wheel-inc: audio/multifunction display controls, memory, 4-way pwr tilt/telescoping steering column, easy exit feature
- SmartKey infrared-remote-inc: opening trunk, opening/closing windows/sunroof, panic alarm, fuel filler door, lock/unlock all doors or drivers
- SmartKey system-inc: remote central locking system, anti-theft engine immobilizer, driver-programmable user-recognition features, drive away automatic locking
- Tele Aid Global Positioning System (GPS) satellite system-inc: stolen vehicle, remote door unlock service, alarm/collision notification, dealer connect
- Velour floor mats/carpeting
- (4) illuminated vanity mirrors w/driver/front passenger magnifying/standard lenses
- Anti-theft alarm system w/towaway protection- Auto-dimming rearview mirror
- Automatic low-intensity environmental comfort lighting-inc: center console, door handles, footwells
- Bose (12) speaker Cabin Surround multi-channel digital sound system-inc: 10" Nd Neodymium Iron Boron high-efficiency woofer, Centerpoint signal processing, AudioPilot digital processor
- Dual front reading lamps/dual rear reading lamps
- Front center armrest w/(2) level storage-inc: upper level dual cup holders, climate controlled illuminated lower level
- Front seatback magazine pockets- HomeLink compatible 3-button garage door control
- Illuminated carpeted trunk w/tie-down hooks
- Instrumentation-inc: electroluminescent analog speedometer, tachometer, fuel/ coolant/exterior temp gauges, digital clock, touch shift gear shift display, standard/comfort shift mode
- Leather trimmed shift knob- Locator lighting w/entrance lamps in all doors
- Mercedes-Benz Maintenance System Plus display-inc: distance remaining to next maintenance, type of service due, reminders
- Multifunction displays in speedometer face-inc: trip computer, Maintenance System, oil level check, digital speedometer, reminder/malfunction messages, driver-programmable settings, cruise control, navigation system route guidance, tire pressure monitoring system, audio status
- Parcel net in RH footwell- Programmable night security illumination
- Pwr rear-window sunshade w/1-touch express up/down
- Pwr windows w/1-touch express up/down for all windows
- Rear center folding armrest w/cup holders, enclosed storage
- Rear window defroster w/auto-shutoff based on time/driving speed/exterior temp
- Stainless-steel door sill trim- Touch turn signals (flashes (3) times w/(1) touch)
- Warning lights/messages-inc: open door, exterior lamp failure, low fuel/oil/ coolant/washer

Mechanical

- 18" x 8.5" x 18" x 9.0" polished AMG double-spoke aluminum wheels
- 2-piston ventilated rear pwr disc brakes
- 4-piston perforated/ventilated front pwr disc brakes
- Anti-lock braking system (ABS) w/brake assist system
- Electronic Stability Program (ESP)- 23.2 gallon fuel tank
- 245/45ZR18 front/265/40ZR18 rear XL high-performance tires
- 5.0L SOHC SMPI 24-valve aluminum-alloy V8 engine
- 7-speed automatic drive-adaptive transmission-inc: Touch Shift, optimum gear programming, comfort mode
- Airmatic air suspension w/Adaptive Damping System (ADS II)-inc: pneumatic spring-struts, dual driver-selectable sport modes, automatic 4-wheel level control, driver-selectable ride height, automatic speed-sensitive lowering, front/rear stabilizer bars
- Electronic Brake Force Distribution (EBD)
- Independent 4-link front/5-arm multilink rear suspension w/anti-squat/antidive geometry
- Rear wheel drive
- Vehicle-speed-sensitive pwr rack & pinion steering w/integrated hydraulic damper

VS Auto Guys

VS Auto Guys

View this car on our website at vsautoguy.com/7099352

Website: vsautoguy.com

Phone: [2132580007](tel:2132580007)

Map: [7514 foothill Blvd, Tujunga, CA 91042](#)

