

2021 Audi S4 Premium Plus

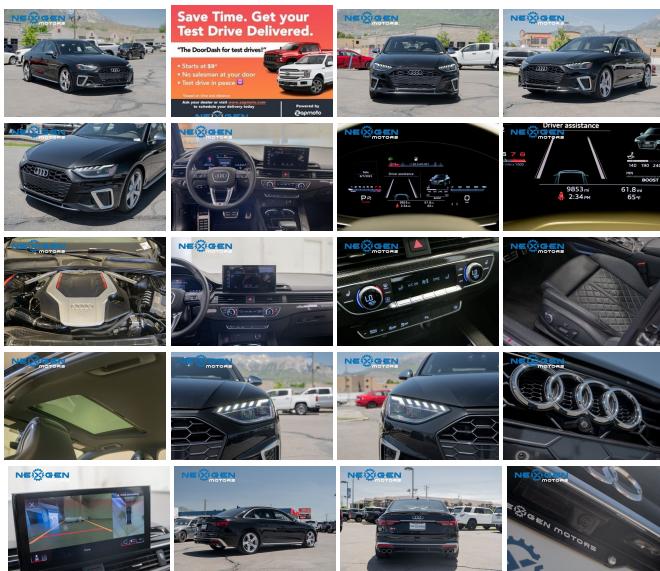
View this car on our website at nexgenmotorsutah.com/7099137/ebrochure



Our Price **\$43,750**

Specifications:

Year:	2021
VIN:	WAUB4AF45MA069325
Make:	Audi
Stock:	069325
Model/Trim:	S4 Premium Plus
Condition:	Pre-Owned
Body:	Sedan
Exterior:	Gray
Engine:	Engine: 3.0L TFSI Twin-Scroll Turbo DOHC V6 -inc: Audi valvelift system and variable valve timing
Interior:	Black Leather
Mileage:	9,830
Economy:	City 20 / Highway 28



2021 Audi S4 Premium Plus

Nexgen Motors - 801-874-3747 - View this car on our website at nexgenmotorsutah.com/7099137/ebrochure

Our Location :



2021 Audi S4 Premium Plus

Nexgen Motors - 801-874-3747 - View this car on our website at nexgenmotorsutah.com/7099137/ebrochure

Installed Options

Interior

- Leather Steering Wheel- Front Cupholder- Rear Cupholder- Compass- Valet Function
- Power Fuel Flap Locking Type
- Remote Keyless Entry w/Integrated Key Transmitter, Illuminated Entry, Illuminated Ignition Switch and Panic Button
- HomeLink Garage Door Transmitter- Dual Zone Front Automatic Air Conditioning
- Driver Foot Rest
- Interior Trim -inc: Aluminum Instrument Panel Insert, Aluminum Door Panel Insert, Piano Black/Aluminum Console Insert and Piano Black/Metal-Look Interior Accents
- Full Cloth Headliner- Leatherette Door Trim Insert
- Leather/Aluminum Gear Shifter Material- Leather/Alcantara Seats -inc: diamond stitching
- Day-Night Auto-Dimming Rearview Mirror
- Driver And Passenger Visor Vanity Mirrors w/Driver And Passenger Illumination
- Full Floor Console w/Covered Storage, Mini Overhead Console and 2 12V DC Power Outlets
- Front And Rear Map Lights- Fade-To-Off Interior Lighting
- Full Carpet Floor Covering -inc: Carpet Front And Rear Floor Mats
- Carpet Floor Trim, Carpet Trunk Lid/Rear Cargo Door Trim and Vinyl/Rubber Mat
- Cargo Space Lights
- FOB Controls -inc: Cargo Access, Windows and Sunroof/Convertible Roof
- Audi connect CARE Tracker System - Driver / Passenger And Rear Door Bins
- Power 1st Row Windows w/Front And Rear 1-Touch Up/Down - Delayed Accessory Power
- Power Door Locks w/Autolock Feature- Systems Monitor
- Redundant Digital Speedometer- Trip Computer- Outside Temp Gauge
- Fixed Front Head Restraints and Manual Adjustable Rear Head Restraints
- Sliding Front Center Armrest and Rear Center Armrest w/Storage
- 2 Seatback Storage Pockets- Engine Immobilizer- 2 12V DC Power Outlets- Air Filtration
- Heated Front S Sport Seats -inc: 8-way power front seats, w/4-way power lumbar adjustment, power side bolsters and massage function
- Driver Seat- Passenger Seat

- 40-20-40 Folding Bench Front Facing Fold Forward Seatback Rear Seat
- Manual Tilt/Telescoping Steering Column
- Gauges -inc: Speedometer, Odometer, Tachometer, Trip Odometer and Trip Computer
- Power Rear Windows- HVAC -inc: Underseat Ducts and Console Ducts
- Illuminated Locking Glove Box- Rear HVAC w/Separate Controls

Exterior

- Body-Colored Front Bumper w/Metal-Look Bumper Insert
- Express Open/Close Sliding And Tilting Glass 1st Row Sunroof w/Sunshade
- Clearcoat Paint- Compact Spare Tire Mounted Inside Under Cargo- Steel Spare Wheel
- Tires: 18" Summer- Wheels: 18" 5-Y-Spoke Design- Front And Rear Fog Lamps
- Perimeter/Approach Lights- LED Brakelights- Headlights-Automatic Highbeams
- Body-Colored Rear Bumper w/Black Rub Strip/Fascia Accent and Metal-Look Bumper Insert
- Metal-Look Bodyside Insert
- Aluminum Side Windows Trim and Black Front Windshield Trim
- Body-Colored Door Handles
- Metal-Look Power Heated Side Mirrors w/Turn Signal Indicator
- Fixed Rear Window w/Defroster- Light Tinted Glass
- Speed Sensitive Rain Detecting Variable Intermittent Wipers w/Heated Jets
- Front Windshield -inc: Sun Visor Strip- Galvanized Steel/Aluminum Panels- Lip Spoiler
- Chrome Grille- Front License Plate Bracket- Trunk Rear Cargo Access
- Programmable Projector Beam Led Low/High Beam Daytime Running Auto-Leveling Auto High-Beam Headlamps w/Delay-Off

Safety

- Leather Steering Wheel- Front Cupholder- Rear Cupholder- Compass- Valet Function
- Power Fuel Flap Locking Type
- Remote Keyless Entry w/Integrated Key Transmitter, Illuminated Entry, Illuminated Ignition Switch and Panic Button
- HomeLink Garage Door Transmitter- Dual Zone Front Automatic Air Conditioning
- Driver Foot Rest
- Interior Trim -inc: Aluminum Instrument Panel Insert, Aluminum Door Panel Insert, Piano Black/Aluminum Console Insert and Piano Black/Metal-Look Interior Accents
- Full Cloth Headliner- Leatherette Door Trim Insert
- Leather/Aluminum Gear Shifter Material- Leather/Alcantara Seats -inc: diamond stitching
- Day-Night Auto-Dimming Rearview Mirror
- Driver And Passenger Visor Vanity Mirrors w/Driver And Passenger Illumination
- Full Floor Console w/Covered Storage, Mini Overhead Console and 2 12V DC Power Outlets
- Front And Rear Map Lights- Fade-To-Off Interior Lighting
- Full Carpet Floor Covering -inc: Carpet Front And Rear Floor Mats
- Carpet Floor Trim, Carpet Trunk Lid/Rear Cargo Door Trim and Vinyl/Rubber Mat
- Cargo Space Lights
- FOB Controls -inc: Cargo Access, Windows and Sunroof/Convertible Roof
- Audi connect CARE Tracker System - Driver / Passenger And Rear Door Bins
- Power 1st Row Windows w/Front And Rear 1-Touch Up/Down - Delayed Accessory Power
- Power Door Locks w/Autolock Feature- Systems Monitor
- Redundant Digital Speedometer- Trip Computer- Outside Temp Gauge
- Fixed Front Head Restraints and Manual Adjustable Rear Head Restraints
- Sliding Front Center Armrest and Rear Center Armrest w/Storage
- 2 Seatback Storage Pockets- Engine Immobilizer- 2 12V DC Power Outlets- Air Filtration
- Heated Front S Sport Seats -inc: 8-way power front seats, w/4-way power lumbar adjustment, power side bolsters and massage function
- Driver Seat- Passenger Seat
- 40-20-40 Folding Bench Front Facing Fold Forward Seatback Rear Seat
- Manual Tilt/Telescoping Steering Column
- Gauges -inc: Speedometer, Odometer, Tachometer, Trip Odometer and Trip Computer
- Power Rear Windows- HVAC -inc: Underseat Ducts and Console Ducts
- Illuminated Locking Glove Box- Rear HVAC w/Separate Controls

Mechanical

- 4-Wheel Disc Brakes w/4-Wheel ABS, Front And Rear Vented Discs, Brake Assist, Hill Hold Control and Electric Parking Brake
- Multi-Link Rear Suspension w/Coil Springs- Multi-Link Front Suspension w/Coil Springs
- Dual Stainless Steel Exhaust w/Chrome Tailpipe Finisher- 15.3 Gal. Fuel Tank
- Electric Power-Assist Speed-Sensing Steering- Sport Tuned Suspension
- Front And Rear Anti-Roll Bars- Gas-Pressurized Shock Absorbers
- Regenerative Alternator- Battery w/Run Down Protection- Engine Oil Cooler
- 2.85 Axle Ratio- Full-Time All-Wheel- Engine Auto Stop-Start Feature
- Transmission: 8-Speed Automatic Tiptronic

- Engine: 3.0L TFSI Twin-Scroll Turbo DOHC V6 -inc: Audi valvelift system and variable valve timing

Nexgen Motors

nexgenmotorsutah.com

801-874-3747

986 N State St.

Orem, UT 84057

© 2023 AutoRevo - All rights reserved. - Powered by AutoRevo