

2020 GMC Yukon XL SLT

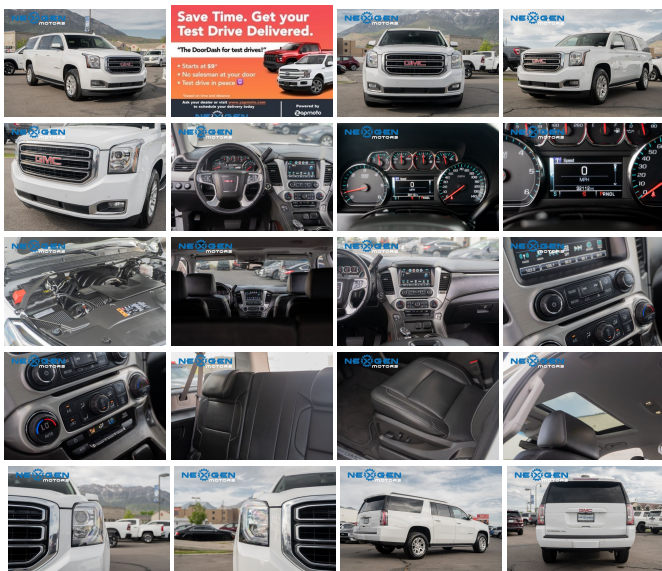
View this car on our website at nexgenmotorsutah.com/7098710/ebrochure



Our Price **\$45,000**

Specifications:

Year:	2020
VIN:	1GKS2GKC7LR250472
Make:	GMC
Stock:	250472
Model/Trim:	Yukon XL SLT
Condition:	Pre-Owned
Body:	SUV
Exterior:	Summit White
Engine:	ENGINE, 5.3L ECOTEC3 V8
Interior:	Jet Black Leather
Mileage:	32,108
Drivetrain:	4 Wheel Drive
Economy:	City 14 / Highway 21



2020 GMC Yukon XL SLT

Nexgen Motors - 801-874-3747 - View this car on our website at nexgenmotorsutah.com/7098710/ebrochure

Our Location :



2020 GMC Yukon XL SLT

Nexgen Motors - 801-874-3747 - View this car on our website at nexgenmotorsutah.com/7098710/ebrochure

Installed Options

Interior

- Seats, front bucket with perforated leather-appointed heated and ventilated seat cushions, 12-way power driver and passenger seat includes 6-way power cushions, driver seat 2-position memory, 4-way power lumbar control and power recline
- Seats, second row 60/40 split-folding bench power release
- Seats, third row 60/40 split-bench, power fold
- Seats, heated and ventilated driver and front passenger perforated leather-appointed
- Seats, heated second row, outboard positions - Safety Alert Seat
- Console, floor with storage area, cup holders
- Floor mats, color-keyed carpeted first and second row, removable
- Floor covering, color-keyed carpeting- Steering column, power tilt and telescopic
- Steering wheel, heated, leather-wrapped
- Steering wheel controls, mounted audio controls, cruise controls and Driver Information Center controls
- Driver Information Center, 4.2" diagonal multi-color
- Windows, power all express down, front express up
- Door locks, power programmable with lockout protection
- Passive Entry System includes (AQQ) Remote Keyless Entry
- Remote vehicle start includes extended range Remote Keyless Entry
- Cruise control, electronic with set and resume speed (Not included when (Y66) Adaptive Cruise Control - Advanced is ordered.)
- Pedals, power-adjustable for accelerator and brake
- Universal Home Remote includes garage door opener, programmable
- Climate control, tri-zone automatic, with individual climate settings for driver, right-front passenger and rear passengers
- Defogger, rear-window electric- Theft-deterrent system, electrical, unauthorized entry
- Power outlet, 110-volt, 1.1 Amp, 150 Watt
- Power outlets, 5 auxiliary, 12-volt includes outlets in the instrument panel, console, back of the console, 1 in 3rd row and 1 in the cargo area.
- Mirror, inside rearview auto-dimming
- Assist handles. 1st row passenger and 2nd row outboard seats

- Lighting, interior with dome light driver- and passenger-side door switch with delayed entry feature, cargo lights, door handle or Remote Keyless Entry-activated illuminated entry and map lights in front and second seat positions
- Lighting, interior includes courtesy lighting with theater dimming, lighting for front and rear door handles, front and rear passenger footwells and door storage area
- Cargo net
- GMC Connected Access capable (Subject to terms. See onstar.com or dealer for details.)

Exterior

- Tires, P265/65R18 all-season, blackwall- Wheel, full-size spare 17" (43.2 cm) steel
- Tire carrier, lockable outside spare winch-type mounted under frame at rear
- Tire, spare P265/70R17 all-season, blackwall
- Luggage rack side rails, roof-mounted, Black- Active aero shutters, front
- Assist steps, Black with chrome strip (Included with (VPY) Graphite Edition. When (VPY) Graphite Edition is ordered, assist steps will be Black with Gloss Black accents. Deleted when (RVQ) Black assist step kit, LPO or (VXH) Chrome assist step kit, LPO, are ordered.)
- Headlamps, halogen projector- Fog lamps with chrome surround
- Mirrors, outside heated power-adjustable, power-folding and driver-side auto-dimming, body-color with integrated turn signal indicators and ground illumination.
- Windshield style, acoustic laminated glass- Windshield, solar-absorbing
- Glass, deep-tinted- Wipers, front rain-sensing, intermittent- Wiper, rear
- Liftgate, rear power programmable, hands free
- Wheels, 18" x 8.5" (45.7 cm x 21.6 cm) bright machined aluminum

Safety

- Seats, front bucket with perforated leather-appointed heated and ventilated seat cushions, 12-way power driver and passenger seat includes 6-way power cushions, driver seat 2-position memory, 4-way power lumbar control and power recline
- Seats, second row 60/40 split-folding bench power release
- Seats, third row 60/40 split-bench, power fold
- Seats, heated and ventilated driver and front passenger perforated leather-appointed
- Seats, heated second row, outboard positions - Safety Alert Seat
- Console, floor with storage area, cup holders
- Floor mats, color-keyed carpeted first and second row, removable
- Floor covering, color-keyed carpeting- Steering column, power tilt and telescopic
- Steering wheel, heated, leather-wrapped
- Steering wheel controls, mounted audio controls, cruise controls and Driver Information Center controls
- Driver Information Center, 4.2" diagonal multi-color
- Windows, power all express down, front express up
- Door locks, power programmable with lockout protection
- Passive Entry System includes (AQQ) Remote Keyless Entry
- Remote vehicle start includes extended range Remote Keyless Entry
- Cruise control, electronic with set and resume speed (Not included when (Y66) Adaptive Cruise Control - Advanced is ordered.)
- Pedals, power-adjustable for accelerator and brake
- Universal Home Remote includes garage door opener, programmable
- Climate control, tri-zone automatic, with individual climate settings for driver, right-front passenger and rear passengers
- Defogger, rear-window electric- Theft-deterrent system, electrical, unauthorized entry
- Power outlet, 110-volt, 1.1 Amp, 150 Watt
- Power outlets, 5 auxiliary, 12-volt includes outlets in the instrument panel, console, back of the console, 1 in 3rd row and 1 in the cargo area.
- Mirror, inside rearview auto-dimming
- Assist handles, 1st row passenger and 2nd row outboard seats
- Lighting, interior with dome light driver- and passenger-side door switch with delayed entry feature, cargo lights, door handle or Remote Keyless Entry-activated illuminated entry and map lights in front and second seat positions
- Lighting, interior includes courtesy lighting with theater dimming, lighting for front and rear door handles, front and rear passenger footwells and door storage area
- Cargo net
- GMC Connected Access capable (Subject to terms. See onstar.com or dealer for details.)

Mechanical

- Tools, mechanical jack and wheel wrench stored in rear quarter trim
- Exhaust, aluminized stainless-steel muffler and tailpipe
- Brakes, 4-wheel antilock, 4-wheel disc, VAC power with Brake Assist
- Powertrain grade braking- Steering, power- Suspension, rear multi-link with coil springs
- Suspension, front coil-over-shock with stabilizer bar
- GVWR, 7500 lbs. (3402 kg) (Standard on 4WD models.)
- Cooling, external engine oil cooler, heavy-duty air-to-oil integral to driver side of radiator
- Cooling, auxiliary external transmission oil cooler, heavy-duty air-to-oil
- Trailering equipment heavy-duty includes trailering hitch platform 7-wire harness with

- Trailing equipment, heavy-duty includes trailing hitch platform, 7-wire harness with independent fused trailing circuits mated to a 7-way sealed connector and 2" trailing receiver
- 4-wheel drive- Alternator, 150 amps
- Transfer case, active, single-speed, electronic Autotrac with rotary controls, does not include neutral. Cannot be dinghy towed. (Not available with 2WD models or (NHT) HD Trailing Package.)
- Differential, heavy-duty locking rear
- Tow/haul mode selector, button located at end of shift lever
- Keyless start, push button start- Suspension Package, Premium Smooth Ride
- Rear axle, 3.08 ratio
- Transmission, 6-speed automatic, electronically controlled with overdrive, tow/haul mode and tap up/tap down shifting
- Engine, 5.3L EcoTec3 V8 with Active Fuel Management, Direct Injection and Variable Valve Timing, includes aluminum block construction (355 hp [265 kW] @ 5600 rpm, 383 lb-ft of torque [518 N-m] @ 4100 rpm)

Option Packages

Factory Installed Packages

-
ENGINE, 5.3L ECOTEC3 V8
with Active Fuel Management,
Direct Injection and Variable
Valve Timing, includes
aluminum block construction
(355 hp [265 kW] @ 5600 rpm,
383 lb-ft of torque [518 N-m]
@ 4100 rpm)

Nexgen Motors

nexgenmotorsutah.com

801-874-3747

986 N State St.

Orem, UT 84057

© 2023 AutoRevo - All rights reserved. - Powered by AutoRevo