



2018 Mercedes-Benz Sprinter Cargo Van

Our Price \$44,999

View this vehicle on our website at palaceautosales.com

(704) 921-6700

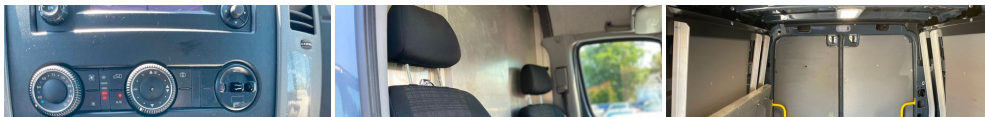
4104 N. Tryon St. , CHARLOTTE, North Carolina 28206

Photos

Details

Contact





Specifications:

Year:	2018
VIN:	WD3PE7CD9JP630920
Make:	Mercedes-Benz
Stock:	P14555
Model/Trim:	Sprinter Cargo Van
Condition:	Pre-Owned
Body:	Minivan/Van
Exterior:	Gray
Engine:	Engine: 3.0L V6 Turbo Diesel
Interior:	Black
Transmission:	Automatic
Mileage:	71,333
Drivetrain:	Rear Wheel Drive

Vehicle Description

PRICES LISTED ARE CASH PRICES; FINANCING AVAILABLE. FOR YOUR CONVENIENCE, NO-HAGGLE PRICING. Prices listed exclude additional applicable fees. FOR MORE PICTURES AND DETAILS LOG ONTO OUR WEBSITE: WWW.PALACEAUTOSALES.COM

Vehicle History Report : as Of 07/03/2025



Snapshot

2018 MERCEDES-BENZ SPRINTER 2500



No accidents or damage reported to CARFAX



25 Service history records



2 Previous owners



Types of owners: Commercial Lease



Last owned in South Carolina



71,333 Last reported odometer reading

FREE CARFAX Report

See the full CARFAX Report for additional information

Installed Options

Interior

- Manual Air Conditioning- Power Door Locks
- Remote Keyless Entry w/Integrated Key Transmitter and Illuminated Entry
- Tunja Seat Upholstery- 2 12V DC Power Outlets
- 4-Way Driver Seat -inc: Manual Recline and Fore/Aft Movement
- 4-Way Passenger Seat- Air Filtration- Analog Appearance- Ashtray- Board Floor Trim
- Bucket Seats -inc: adjustable front passenger seat - Cargo Space Lights
- Day-Night Rearview Mirror- Driver And Front Passenger Armrests- Driver Foot Rest
- Engine Immobilizer- FOB Controls -inc: Cargo Access- Fade-To-Off Interior Lighting
- Front Cigar Lighter(s)- Front Cloth Headliner- Front Cupholder
- Front Only Vinyl/Rubber Floor Covering
- Full Overhead Console w/Storage and 2 12V DC Power Outlets
- Gauges -inc: Speedometer, Odometer, Tachometer and Trip Odometer
- HVAC -inc: Residual Heat Recirculation and Supplemental Heater
- Instrument Panel Bin, Dashboard Storage, Interior Concealed Storage, Driver And Passenger Door Bins
- Locking Glove Box- Manual Adjustable Front Head Restraints
- Manual Tilt/Telescoping Steering Column- Outside Temp Gauge
- Power 1st Row Windows w/Driver And Passenger 1-Touch Down
- Seats w/Vinyl Back Material- Urethane Gear Shifter Material

Exterior

- Argent Front Bumper w/2 Tow Hooks- Argent Rear Bumper w/1 Tow Hook
- Fixed Interval Wipers- Full-Size Spare Tire Stored Underbody w/Crankdown
- Sliding Rear Passenger Side Door
- Tailgate/Rear Door Lock Included w/Power Door Locks- Wheels: 6.5J x 16" Steel
- Aero-Composite Halogen Daytime Running Headlamps- Argent Bodyside Moldings
- Black Door Handles- Black Grille
- Black Manual Side Mirrors w/Convex Spotter and Manual Folding
- Black Side Windows Trim and Black Front Windshield Trim - Clearcoat Paint
- Front License Plate Bracket- Fully Galvanized Steel Panels- LED Brakelights
- Light Tinted Glass- Splash Guards- Split Swing-Out Rear Cargo Access
- Steel Spare Wheel- Tires: All-Season- Tires: Kumho- Tires: LT245/75R16

See the full CARFAX report for additional information

*carfax Snapshot is a reflection of available information on the date the report was pulled.
carfax is constantly being updated with new information and is subject to change at any time.

- Wheels w/Silver Accents w/Hub Covers

Safety

- Manual Air Conditioning- Power Door Locks
- Remote Keyless Entry w/Integrated Key Transmitter and Illuminated Entry
- Tunja Seat Upholstery- 2 12V DC Power Outlets
- 4-Way Driver Seat -inc: Manual Recline and Fore/Aft Movement
- 4-Way Passenger Seat- Air Filtration- Analog Appearance- Ashtray- Board Floor Trim
- Bucket Seats -inc: adjustable front passenger seat - Cargo Space Lights
- Day-Night Rearview Mirror- Driver And Front Passenger Armrests- Driver Foot Rest
- Engine Immobilizer- FOB Controls -inc: Cargo Access- Fade-To-Off Interior Lighting
- Front Cigar Lighter(s)- Front Cloth Headliner- Front Cupholder
- Front Only Vinyl/Rubber Floor Covering
- Full Overhead Console w/Storage and 2 12V DC Power Outlets
- Gauges -inc: Speedometer, Odometer, Tachometer and Trip Odometer
- HVAC -inc: Residual Heat Recirculation and Supplemental Heater
- Instrument Panel Bin, Dashboard Storage, Interior Concealed Storage, Driver And Passenger Door Bins
- Locking Glove Box- Manual Adjustable Front Head Restraints
- Manual Tilt/Telescoping Steering Column- Outside Temp Gauge
- Power 1st Row Windows w/Driver And Passenger 1-Touch Down
- Seats w/Vinyl Back Material- Urethane Gear Shifter Material

Mechanical

- Transmission w/Sequential Shift Control w/Steering Wheel Controls and Oil Cooler
- Transmission: 5-Speed Automatic- 12V/100 Amp Battery- 14 V/220A Alternator
- 24.5 Gal. Fuel Tank- 3501# Maximum Payload
- 4-Wheel Disc Brakes w/4-Wheel ABS, Front Vented Discs, Brake Assist and Hill Hold Control
- 850CCA Maintenance-Free Battery- Axle Ratio: 3.92- Engine: 3.0L V6 Turbo Diesel
- Front HD Anti-Roll Bar and Rear Anti-Roll Bar- GVWR: 8,550 lbs- HD Shock Absorbers
- Hydraulic Power-Assist Steering- Leaf Rear Suspension w/Leaf Springs
- Rear-Wheel Drive- Single Stainless Steel Exhaust
- Strut Front Suspension w/Transverse Leaf Springs

MPG based on 2008 -2009 EPA mileage estimates, reflecting new EPA fuel economy methods beginning with 2008 models. Use for comparison purposes only. Do not compare to models before 2008. Your actual mileage will vary depending on how you drive and maintain your vehicle.

Palace Auto Sales

View this car on our website at palaceautosales.com/7097569

Website: palaceautosales.com

Phone: (704) 921-6700

Map: [4104 N. Tryon St., CHARLOTTE, North Carolina 28206](#)

