

2015 Chevrolet Tahoe LT

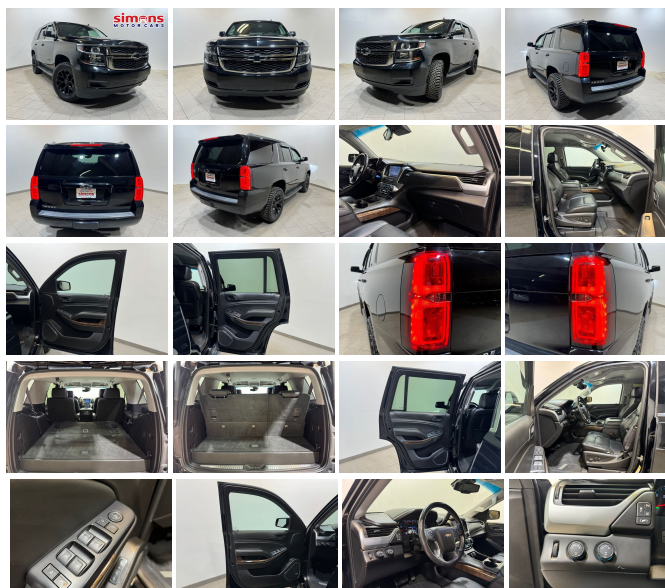
View this car on our website at inventory.simonsmotorcars.com/7097522/ebrochure



Our Price **\$23,995**

Specifications:

| | |
|--------------------|---|
| Year: | 2015 |
| VIN: | 1GNSKBKC0FR253174 |
| Make: | Chevrolet |
| Stock: | 13105 |
| Model/Trim: | Tahoe LT |
| Condition: | Pre-Owned |
| Body: | SUV |
| Exterior: | BLACK |
| Engine: | ENGINE, 5.3L ECOTEC3 V8 WITH ACTIVE FUEL MANAGEMENT, DIRECT INJECTION AND VARIABLE VALVE TIMING |
| Interior: | Leather |
| Mileage: | 115,875 |
| Drivetrain: | 4 Wheel Drive |
| Economy: | City 16 / Highway 22 |



Step into the realm of refined power and embrace the allure of the 2015 Chevrolet Tahoe LT, a testament to American engineering and luxury. With a sleek black exterior that commands attention on every road, this Tahoe is not just a vehicle; it's a statement of style and sophistication.

With a respectful 115,875 miles on the odometer, this Tahoe has been meticulously cared for, ready to embark on new adventures with its next discerning owner. The journey is just as important as the destination, and the other leather interior of this vehicle ensures that every mile is cloaked in comfort and elegance. The seats, a testament to craftsmanship, invite you and your passengers to sit back, relax, and savor the ride.

At the heart of this mechanical marvel is the robust 5.3L ECOTEC3 V8 engine, an engineering masterpiece that blends power with efficiency. Equipped with Active Fuel Management, Direct Injection, and Variable Valve Timing, this powerhouse is designed to optimize performance and fuel economy. Whether you're cruising down the highway or navigating city streets, the Tahoe LT delivers a driving experience that's both exhilarating and responsible.

The Chevrolet Tahoe LT is not just about what's under the hood; it's also about the thoughtfully curated manufacturer options and packages that enhance every aspect of the drive. These features, which have been selected to complement the vehicle's design and performance, ensure that this Tahoe is not just keeping pace with the times, but setting the standard for them.

As you slide behind the wheel, you'll immediately feel in command of the road. The leather-wrapped steering wheel and intuitive controls put

the power of the Tahoe at your fingertips, while advanced safety features work silently in the background to protect you and your loved ones. Every detail, from the meticulously designed dashboard to the state-of-the-art infotainment system, is crafted to enhance your driving pleasure.

The 2015 Chevrolet Tahoe LT is more than just a mode of transportation; it's a mobile sanctuary. The spacious cabin is a quiet retreat from the outside world, offering a level of tranquility that is rare in vehicles today. With ample room for passengers and cargo alike, this Tahoe is as versatile as it is luxurious, ready to accommodate every facet of your lifestyle.

Imagine the envious glances as you pull up to the curb, the soft purr of the engine turning heads. This is not just any vehicle; this is the 2015 Chevrolet Tahoe LT, a symbol of your discerning taste and appreciation for the finer things in life. The black exterior glistens in the sunlight, a mirror-like finish that speaks to the care and attention this vehicle has received.

This is your chance to own a piece of automotive excellence. The 2015 Chevrolet Tahoe LT is not just a purchase; it's an investment in quality, comfort, and performance. Don't let this opportunity pass you by. Embrace the power, indulge in the luxury, and make a statement that will resonate for years to come. Your new journey awaits.

2015 Chevrolet Tahoe LT

Simons Motorcars - 216-710-5300 - View this car on our website at inventory.simonsmotorcars.com/7097522/ebrochure

Vehicle History Report : as Of 05/18/2024



Snapshot

2015 CHEVROLET TAHOE LT



No accidents or damage reported to CARFAX



22 Service history records



2 Previous owners



Types of owners: Personal lease
Personal



Last owned in Ohio



115,000 Last reported odometer reading



FREE CARFAX Report

See the full CARFAX Report for additional information

*carfax Snapshot is a reflection of available information on the date the report was pulled. carfax is constantly being updated with new information and is subject to change at any time.

Our Location :



2015 Chevrolet Tahoe LT

Simons Motorcars - 216-710-5300 - View this car on our website at inventory.simonsmotorcars.com/7097522/ebrochure

Installed Options

Interior

- Seating, front bucket with leather-appointed seating heated seat cushions and seat backs, 10-way power driver and passenger seat includes 6-way power cushions, driver seat 2-position memory, 2-way power lumbar control and power recline
- OnStar with 4G LTE provides a built-in Wi-Fi hotspot to connect to the internet at 4G LTE speeds (Only on vehicles built after 10/5/14. Visit www.onstar.com for vehicle availability, details and system limitations. Services and connectivity may vary by model and conditions. 4G LTE service available in select markets. 4G LTE performance based on industry averages and vehicle systems design. Some services require data plan.)
- Seat trim, leather-appointed front seats- Seat adjuster, front passenger 6-way power
- Memory settings recalls presets for driver power seat adjuster and pedals (When (PCK) Luxury Package is ordered, also includes memory presets for outside rearview mirrors and power steering column.)
- Seats, second row 60/40 split-folding bench, manual
- Seat, third row manual 60/40 split-folding bench, fold flat (Not included when (PCK) Luxury Package is ordered.)
- Console, floor with storage area, cup holders, SD card slot and auxiliary jack
- Floor mats, color-keyed carpeted first and second row, removable (Deleted when (Z71) Off-Road Package is ordered.)
- Steering column, manual tilt and telescopic- Steering wheel, leather-wrapped
- Steering wheel controls, mounted audio and cruise controls includes Driver Information Center controls

Option Packages

Factory Installed Packages

ENGINE, 5.3L ECOTEC3 V8 WITH ACTIVE FUEL MANAGEMENT, DIRECT INJECTION AND VARIABLE VALVE TIMING

includes aluminum block construction (355 hp
[265 kW] @ 5600 rpm, 383 lb-ft of torque [518 N-m] @ 4100 rpm)

- Door locks, power programmable with lockout protection
- Remote Keyless Entry, extended-range (Not included when (PCK) Luxury Package is ordered.)
- Cruise control, electronic with set and resume speed
- Floor covering, color-keyed carpeting
- Display, driver instrument information enhanced, multi-color- Remote vehicle start
- Windows, power, all express down, front express up
- Universal Home Remote includes garage door opener, programmable
- Pedals, power-adjustable for accelerator and brake
- Climate control, tri-zone automatic with individual climate settings for driver, right-front passenger and rear passengers
- Defogger, rear-window electric- Power outlet, 110-volt
- Power outlets, 5 auxiliary, 12-volt includes outlets in the instrument panel, console, back of console, 1 in 3rd row and 1 in cargo area (when bench seat is ordered, the outlet on the back of the console is lost)
- Mirror, inside rearview auto-dimming
- Conversation mirror (Deleted when (UTT) Theft Protection Package is ordered.)
- Assist handles, all seats
- Lighting, interior with dome light, driver- and passenger-side door switch with delayed entry feature, cargo lights, door handle or Remote Keyless Entry-activated illuminated entry and map lights in front and second seat positions.
- Cargo management system- Cargo net

Exterior

- Wheels, 18" x 8.5" (45.7 cm x 21.6 cm) aluminum with high-polished finish
- Tires, P265/65R18 all-season, blackwall- Tire, spare P265/70R17 all-season, blackwall
- Wheel, full-size spare, 17" (43.2 cm) steel- Assist steps, Black
- Mirrors, outside heated power-adjustable, manual-folding and color keyed
- Liftgate with glass, power
- Tire carrier, lockable outside spare, winch-type mounted under frame at rear
- Fascia, front body-color- Fascia, rear color-keyed- Luggage rack side rails, roof-mounted
- Daytime Running Lamps, with automatic exterior lamp control
- Wipers, front intermittent, Rainsense- Wiper, rear intermittent with washer

Safety

- Seating, front bucket with leather-appointed seating heated seat cushions and seat backs, 10-way power driver and passenger seat includes 6-way power cushions, driver seat 2-position memory, 2-way power lumbar control and power recline
- OnStar with 4G LTE provides a built-in Wi-Fi hotspot to connect to the internet at 4G LTE speeds (Only on vehicles built after 10/5/14. Visit www.onstar.com for vehicle availability, details and system limitations. Services and connectivity may vary by model and conditions. 4G LTE service available in select markets. 4G LTE performance based on industry averages and vehicle systems design. Some services require data plan.)
- Seat trim, leather-appointed front seats- Seat adjuster, front passenger 6-way power
- Memory settings recalls presets for driver power seat adjuster and pedals (When (PCK) Luxury Package is ordered, also includes memory presets for outside rearview mirrors and power steering column.)
- Seats, second row 60/40 split-folding bench, manual
- Seat, third row manual 60/40 split-folding bench, fold flat (Not included when (PCK) Luxury Package is ordered.)
- Console, floor with storage area, cup holders, SD card slot and auxiliary jack
- Floor mats, color-keyed carpeted first and second row, removable (Deleted when (Z71) Off-Road Package is ordered.)
- Steering column, manual tilt and telescopic- Steering wheel, leather-wrapped
- Steering wheel controls, mounted audio and cruise controls includes Driver Information Center controls
- Door locks, power programmable with lockout protection
- Remote Keyless Entry, extended-range (Not included when (PCK) Luxury Package is ordered.)
- Cruise control, electronic with set and resume speed
- Floor covering, color-keyed carpeting
- Display, driver instrument information enhanced, multi-color- Remote vehicle start
- Windows, power, all express down, front express up
- Universal Home Remote includes garage door opener, programmable
- Pedals, power-adjustable for accelerator and brake
- Climate control, tri-zone automatic with individual climate settings for driver, right-front passenger and rear passengers
- Defogger, rear-window electric- Power outlet, 110-volt
- Power outlets, 5 auxiliary, 12-volt includes outlets in the instrument panel, console, back of console, 1 in 3rd row and 1 in cargo area (when bench seat is ordered, the outlet on the back of the console is lost)
- Mirror, inside rearview auto-dimming
- Conversation mirror (Deleted when (UTT) Theft Protection Package is ordered.)
- Assist handles, all seats
- Lighting, interior with dome light, driver- and passenger-side door switch with delayed entry

feature, cargo lights, door handle or Remote Keyless Entry-activated illuminated entry and map lights in front and second seat positions.

- Cargo management system- Cargo net

Mechanical

- Transmission, 6-speed automatic, electronically controlled with overdrive and tow/haul mode
- Engine, 5.3L EcoTec3 V8 with Active Fuel Management, Direct Injection and Variable Valve Timing includes aluminum block construction (355 hp [265 kW] @ 5600 rpm, 383 lb-ft of torque [518 N-m] @ 4100 rpm)
- Rear axle, 3.08 ratio (Not available with (NHT) Max Trailering Package.)
- Suspension Package, Premium Smooth Ride (Not available with (NHT) Max Trailering Package.)
- Transfer case, active, single-speed, electronic Autotrac with rotary controls, does not include neutral. Cannot be dinghy towed (Requires 4WD model. Not available with (NHT) Max Trailering Package.)
- Differential, heavy-duty locking rear- 4-wheel drive
- Cooling, external engine oil cooler, heavy-duty air-to-oil integral to driver side of radiator
- Cooling, auxiliary transmission oil cooler, heavy-duty air-to-oil
- Battery, 720 cold cranking amps with 80 amp hour rating - Alternator, 150 amps
- Trailering equipment includes trailering hitch platform, 7-wire harness with independent fused trailering circuits mated to a 7-way sealed connector and 2" trailering receiver
- GVWR, 7300 lbs. (3311 kg)- Suspension, front coil-over-shock with stabilizer bar
- Suspension, rear multi-link with coil springs- Steering, power

Simons Motorcars

inventory.simonsmotorcars.com

216-710-5300

90 Broadway Ave

Bedford, OH 44146

© 2024 AutoRevo - All rights reserved. - **Powered by AutoRevo**