

2010 Ford Ranger XL

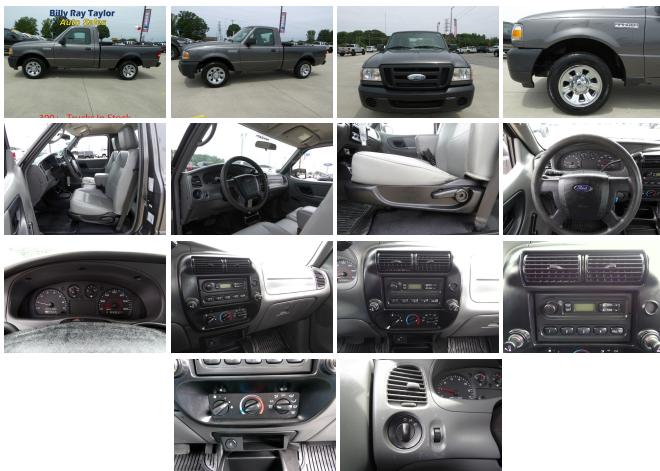
View this car on our website at billyraytaylorautosales.com/7096607/ebrochure



Our Price **\$10,995**

Specifications:

Year:	2010
VIN:	1FTKR1AD6APA04973
Make:	Ford
Stock:	CG22140
Model/Trim:	Ranger XL
Condition:	Pre-Owned
Body:	Pickup Truck
Exterior:	Dark Shadow Grey Metallic
Engine:	2.3L DOHC 16-VALVE I4 ENGINE
Interior:	Tan Leather
Mileage:	126,771
Drivetrain:	Rear Wheel Drive
Economy:	City 19 / Highway 24



2010 Ford Ranger XL

Billy Ray Taylor Auto Sales - (855) 978-7392 - View this car on our website at billyraytaylorautosales.com/7096607/ebrochure

Our Location :



2010 Ford Ranger XL

Billy Ray Taylor Auto Sales - (855) 978-7392 - View this car on our website at billyraytaylorautosales.com/7096607/ebrochure

Installed Options

Interior

- 12-volt aux pwr point- Air conditioning- Black rugged textured vinyl floor covering
- Black urethane 4-spoke steering wheel- Black-faced gauge cluster w/black trim rings
- Cup holders- Dome light- Driver/passenger A-pillar-mounted grab handles
- Gauges -inc: tachometer, fuel, engine temp- Glove box- Low series door trim panels
- Manual day/night rearview mirror- Medium Dark Flint, Vinyl 60/40 split bench seat
- SecurILock anti-theft system- Smokers pkg -inc: lighter, ash tray
- Sun visors w/driver side strap

Exterior

- 15" 7-spoke silver-painted steel wheels- Bi-color tail lamps- Black H-bar grille
- Black door handles
- Black front/rear step bumper -inc: black painted face bar w/matching lower valance
- Black manual side mirrors- Front/rear stone guards- Mini spare tire
- P225/70R15 all-season BSW tires- Quick-release tailgate w/black handle
- Raised "power dome" hood- Rear window fixed glass- Solar tinted glass
- Variable-intermittent windshield wipers

Safety

- 12-volt aux pwr point- Air conditioning- Black rugged textured vinyl floor covering
- Black urethane 4-spoke steering wheel- Black-faced gauge cluster w/black trim rings
- Cup holders- Dome light- Driver/passenger A-pillar-mounted grab handles
- Gauges -inc: tachometer, fuel, engine temp- Glove box- Low series door trim panels
- Manual day/night rearview mirror- Medium Dark Flint, Vinyl 60/40 split bench seat
- SecurILock anti-theft system- Smokers pkg -inc: lighter, ash tray
- Sun visors w/driver side strap

Mechanical

- (4) cargo box tie-down hooks- 100,000 mile tune-up interval- 110-amp alternator
- 2-stage multi-leaf rear suspension (2009)- 2.3L DOHC 16-valve I4 engine
- 3.73 axle ratio (REQ: 44R Manual Transmission)
- 4300# GVWR, 1160# maximum payload- 5-speed manual transmission w/O
- 58-amp (540 CCA) battery- 6' pickup box- Front stabilizer bar
- Independent short/long A arm front suspension -inc: coil spring- Pwr front/rear disc brakes
- Pwr rack & pinion steering- Rear wheel drive- Trailer tow- Tuned gas shock absorbers

Option Packages

Factory Installed Packages

-
2.3L DOHC 16-VALVE I4 ENGINE

Options and features are automatically generated from the VIN number. We strive to verify all options, features, and trim levels are correct but errors can be made. Please verify all options are correct prior to purchase of vehicle.

Billy Ray Taylor Auto Sales

billyraytaylorautosales.com

(855) 978-7392

5355 AL Highway 157

Cullman, AL 35058

© 2022 AutoRevo - All rights reserved. - Powered by AutoRevo