



2016 Ford Mustang GT Premium CALIFORNIA SPECIAL

Website Price \$32,995

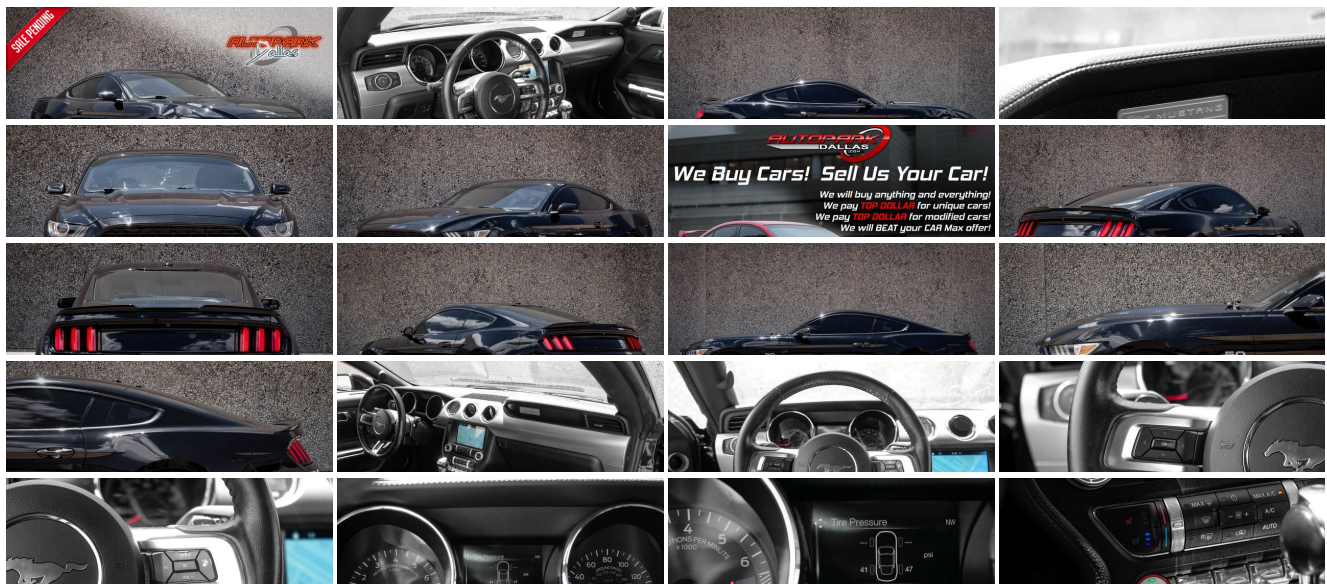
View this vehicle on our website at autoparkdallas.com



(214) 945-2601

2061 S Stemmons Fwy , Lewisville, TX 75067

- Photos
- Details
- Contact



Specifications:

Year:	2016
VIN:	1FA6P8CF4G5336225
Make:	Ford
Model/Trim:	Mustang GT Premium CALIFORNIA SPECIAL
Condition:	Pre-Owned
Body:	Coupe
Exterior:	Shadow Black
Engine:	ENGINE: 5.0L TI-VCT V8
Interior:	Black
Mileage:	78,648
Drivetrain:	Rear Wheel Drive
Economy:	City 15 / Highway 25

Vehicle Description

Installed Options

Interior

- Cruise Control w/Steering Wheel Controls
- FOB Controls -inc: Cargo Access and Windows
- Gauges -inc: Speedometer, Odometer, Voltmeter, Engine Coolant Temp, Tachometer, Oil Level, Oil Temperature, Trip Odometer and Trip Computer
- Leather Bucket Seats -inc: leather front seats and vinyl rear seats, 6-way power front seats w/driver power lumbar, driver and front passenger memory recline and 4-way adjustable front/2-way adjustable rear head restraints
- Perimeter Alarm- Power Door Locks w/Autolock Feature
- Proximity Key For Doors And Push Button Start
- Remote Keyless Entry w/Integrated Key Transmitter, Illuminated Entry and Panic Button
- Trip Computer- 2 12V DC Power Outlets- 2 Seatback Storage Pockets
- 50-50 Folding Bench Front Facing Fold Forward Seatback Rear Seat - Air Filtration
- Analog Appearance- Cargo Features -inc: Tire Mobility Kit- Cargo Space Lights
- Carpet Floor Trim and Carpet Trunk Lid/Rear Cargo Door Trim
- Climate Controlled Heated/Cooled Front Seats- Compass
- Day-Night Auto-Dimming Rearview Mirror- Delayed Accessory Power
- Driver And Passenger Door Bins
- Driver And Passenger Visor Vanity Mirrors w/Driver And Passenger Illumination
- Driver Foot Rest- Driver Seat -inc: Manual Rear Seat Easy Entry
- Dual Zone Front Automatic Air Conditioning- Fade-To-Off Interior Lighting
- Fixed Rear Windows- Front Center Armrest- Front Cupholder- Front Map Lights
- Full Carpet Floor Covering -inc: Carpet Front Floor Mats - Full Cloth Headliner
- Full Floor Console w/Locking Storage, Mini Overhead Console w/Storage and 2 12V DC Power Outlets
- Garage Door Transmitter- Illuminated Locking Glove Box
- Interior Trim -inc: Aluminum Instrument Panel Insert and Chrome/Aluminum Interior Accents
- Leather/Aluminum Gear Shifter Material- Leather/Aluminum Steering Wheel
- Leatherette Door Trim Insert- Manual Tilt/Telescoping Steering Column
- Outside Temp Gauge- Passenger Seat -inc: Manual Rear Seat Easy Entry
- Power 1st Row Windows w/Driver And Passenger 1-Touch Up/Down
- Remote Releases -Inc: Power Cargo Access- Seats w/Leatherette Back Material
- Securilock Anti-Theft Ignition (pats) Engine Immobilizer- Systems Monitor

Exterior

- Speed Sensitive Variable Intermittent Wipers
- Auto On/Off Projector Beam High Intensity Low/High Beam Headlamps w/Delay-Off
- Black Grille- Black Side Windows Trim- Body-Colored Door Handles
- Body-Colored Front Bumper
- Body-Colored Power Heated Side Mirrors w/Convex Spotter, Manual Folding and Turn Signal Indicator
- Body-Colored Rear Bumper Clearcoat Paint- Fixed Rear Window w/Defroster
- Front Fog Lamps- Galvanized Steel/Aluminum Panels- LED Brake Lights

Option Packages

Factory Installed Packages

ENGINE: 5.0L TI-VCT V8

CALIFORNIA SPECIAL

-inc: black painted hood vents, faux gas cap, performance front splitter and underhood California special strut tower brace badge, Tires: 19", Black Raised Decklid Spoiler, Prem Carpeted Floor Mats w/Red Contrast Stitching, No logo, Door Inserts, shifter boot and console lid w/red contrast stitching, Diamond Plate Aluminum Instrument Panel, unique GT/CS badge, Unique Black Upper & Lower Grilles, tri-bar pony logo on upper grille, Black Painted Mirror Caps, Wheels: 19" Ebony Black Painted Machined Alum

\$1,995

Option Packages Total

\$1,995

- Front Fog Lamps- Carbonized Steel/Aluminum Fenders- LED Headlights
- Light Tinted Glass- Lip Spoiler- Perimeter/Approach Lights- Tire Mobility Kit
- Tires: P235/50R18 BSW AS- Trunk Rear Cargo Access
- Wheels: 18" x 8" Magnetic Painted/Machined -inc: Aluminum

Safety

- Cruise Control w/Steering Wheel Controls
- FOB Controls -inc: Cargo Access and Windows
- Gauges -inc: Speedometer, Odometer, Voltmeter, Engine Coolant Temp, Tachometer, Oil Level, Oil Temperature, Trip Odometer and Trip Computer
- Leather Bucket Seats -inc: leather front seats and vinyl rear seats, 6-way power front seats w/driver power lumbar, driver and front passenger memory recline and 4-way adjustable front/2-way adjustable rear head restraints
- Perimeter Alarm- Power Door Locks w/Autolock Feature
- Proximity Key For Doors And Push Button Start
- Remote Keyless Entry w/Integrated Key Transmitter, Illuminated Entry and Panic Button
- Trip Computer- 2 12V DC Power Outlets- 2 Seatback Storage Pockets
- 50-50 Folding Bench Front Facing Fold Forward Seatback Rear Seat - Air Filtration
- Analog Appearance- Cargo Features -inc: Tire Mobility Kit- Cargo Space Lights
- Carpet Floor Trim and Carpet Trunk Lid/Rear Cargo Door Trim
- Climate Controlled Heated/Cooled Front Seats- Compass
- Day-Night Auto-Dimming Rearview Mirror- Delayed Accessory Power
- Driver And Passenger Door Bins
- Driver And Passenger Visor Vanity Mirrors w/Driver And Passenger Illumination
- Driver Foot Rest- Driver Seat -inc: Manual Rear Seat Easy Entry
- Dual Zone Front Automatic Air Conditioning- Fade-To-Off Interior Lighting
- Fixed Rear Windows- Front Center Armrest- Front Cupholder- Front Map Lights
- Full Carpet Floor Covering -inc: Carpet Front Floor Mats- Full Cloth Headliner
- Full Floor Console w/Locking Storage, Mini Overhead Console w/Storage and 2 12V DC Power Outlets
- Garage Door Transmitter- Illuminated Locking Glove Box
- Interior Trim -inc: Aluminum Instrument Panel Insert and Chrome/Aluminum Interior Accents
- Leather/Aluminum Gear Shifter Material- Leather/Aluminum Steering Wheel
- Leatherette Door Trim Insert- Manual Tilt/Telescoping Steering Column
- Outside Temp Gauge- Passenger Seat -inc: Manual Rear Seat Easy Entry
- Power 1st Row Windows w/Driver And Passenger 1-Touch Up/Down
- Remote Releases -Inc: Power Cargo Access- Seats w/Leatherette Back Material
- Securilock Anti-Theft Ignition (pats) Engine Immobilizer- Systems Monitor

Mechanical

- Mechanical Limited Slip Differential
- Transmission: 6-Speed Manual -inc: reverse lockout pull ring - 16 Gal. Fuel Tank
- 3.31 Axle Ratio
- 4-Wheel Disc Brakes w/4-Wheel ABS, Front Vented Discs, Brake Assist and Hill Hold Control
- 60-Amp/Hr Maintenance-Free Battery w/Run Down Protection- Block Heater
- Driver Control Ride Control Suspension
- Dual Stainless Steel Exhaust w/Polished Tailpipe Finisher
- Electric Power-Assist Speed-Sensing Steering- Engine: 5.0L Ti-VCT V8
- Front And Rear Anti-Roll Bars- Gas-Pressurized Shock Absorbers
- Multi-Link Rear Suspension w/Coil Springs- Rear-Wheel Drive
- Strut Front Suspension w/Coil Springs



Auto Park Dallas

View this car on our website at autoparkdallas.com/7096364

Website: autoparkdallas.com

Phone: (214) 945-2601

Map: 2061 S Stemmons Fwy, Lewisville, TX 75067

