



2021 Chevrolet Corvette 1LT Z51 PKG

Website Price \$96,995

View this vehicle on our website at [autoparkdallas.com](https://www.autoparkdallas.com)



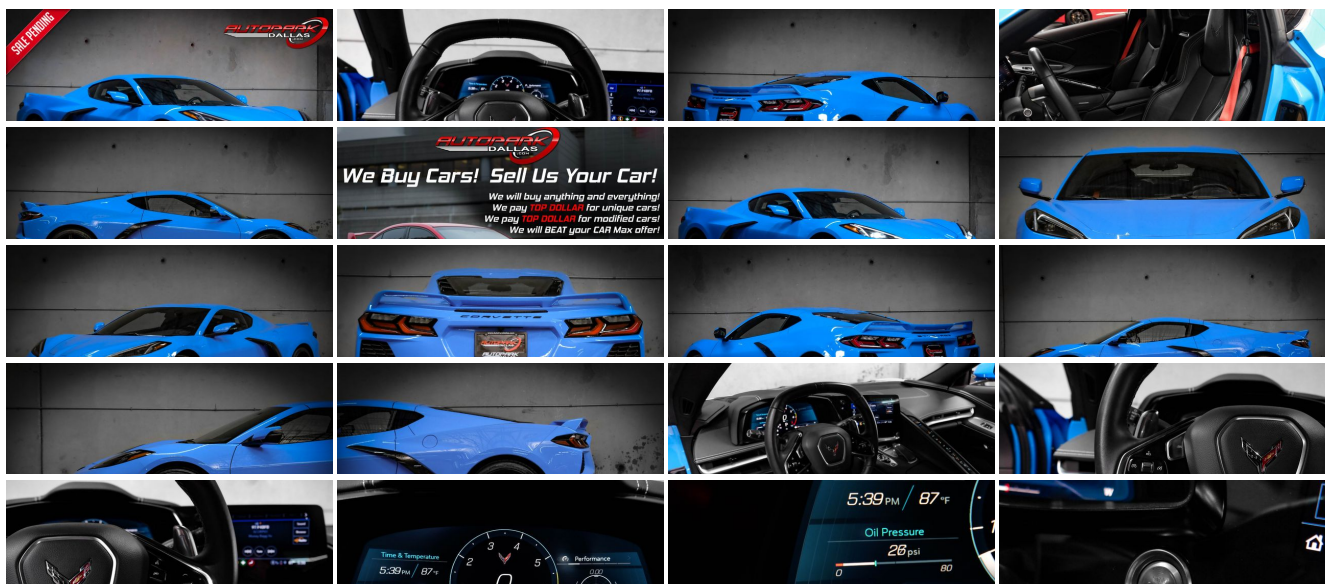
(214) 945-2601

2061 S Stemmons Fwy , Lewisville, TX 75067

Photos

Details

Contact



Specifications:

Year:	2021
VIN:	1G1YA2D41M5118908
Make:	Chevrolet
Model/Trim:	Corvette 1LT Z51 PKG
Condition:	Pre-Owned
Body:	Coupe
Exterior:	Rapid Blue
Engine:	ENGINE, 6.2L V8 DI, HIGH-OUTPUT
Interior:	Jet Black Leather
Transmission:	TRANSMISSION, 8-SPEED DUAL CLUTCH, INCLUDES MANUAL AND AUTO MODES
Mileage:	12,595
Drivetrain:	Rear Wheel Drive
Economy:	City 15 / Highway 27

Vehicle Description

AutoPark Dallas is thrilled to offer you this Beautiful Rapid Blue 2021 Chevrolet Corvette with Z51 Package for sale! The HOTTEST Corvette on the market right now, the new C8 Corvettes by Chevrolet are just jaw-dropping gorgeous and hold strong to the roots of a neck snapping machine! Coming forth with all new EVERYTHING, the C8 is has been reimagined by Chevrolet to be even more unique then anything on the market. Our C8 Corvette here at APD is coming in one of the most eye catching colors, Rapid Blue, and is equipped with the Z51 Performance Package which is a MUST HAVE! DO! NOT! HESITATE!!! To swing by and check out our C8 parked here in our indoor 16,000 Sq Ft Showroom located in Dallas , Texas amongst our inventory of 100+ other Unique / Modified and Luxury Vehicles!

2021 Chevrolet Corvette

* 1 OWNER !*

* Clean CarFax !*

* Z51 Performance Package !*

Rapid Blue Exterior

Jet Black Leather Interior

Bluetooth

Back-Up Camera

Rear Reverse Sensors

Dual Climate Controls

Push Button Start

BOSE Premium Sound System

Apply CarPlay & Android Auto

LED Daytime Running Lights

Manual Mode w/ Paddle Shifters

6.2L V8 DI High-Output Engine

8-Speed Dual Clutch Automatic Transmission

Rear Wheel Drive

Professionally Detailed!

Well Maintained!

* Free CarFax Report !*

Financing is available!

Check out our Payment Calculator to get an estimate on your monthly payments!

OR

Get pre-approved in no time by filling out a credit application on the 'Finance' section of our website!

We also offer MANY different Extended Warranty options!

Check out our Google Reviews by *Clicking* this LINK!

Referrals and Testimonials is what our business is built on!

The team here at AutoPark Dallas, is dedicated to offering a level of customer service not usually found in the automobile industry. Thanks to years of extensive car buying / selling experience, we pursue quality used and new vehicles that are hand-picked from factory sources. Our love for automobiles and dislike of traditional dealership tactics is what motivates us to provide the service we do! The pride we take in continuing this service long after the vehicle has been delivered is what we strive for! Looking forward to making every effort to see that our customer is completely satisfied and a friend for life!

Pre-purchase inspections are always welcomed!

We also offer airport pick-up, competitive financing options, free CarFax Reports, Car Shipping nationwide, Extended Warranty plans, and so much more!

Trade-In(s) are always accepted or sell us your used car (MODIFIED OR NOT)! Please call or text for more information about Trade-Ins or selling your car to us @ (214) 945-2601!

#(214) 945-2601

Call or Text **Anytime!**

Se habla Español

WE BUY CARS!

WWW.AUTOPARKDALLAS.COM

Installed Options

Interior

- Air conditioning, dual-zone automatic climate control individual climate settings for driver and passenger, with outside temperature display
- Air filtration system with pollen filter
- Chevrolet Connected Access (Subject to terms. See onstar.com or dealer for details.)
- Console, floor 2 covered cup holders, auxiliary power outlet, USB ports, auxiliary input jack and lockable storage
- Cruise control, electronic with set and resume speed - Defogger, rear-window, electric
- Door locks, power programmable with lockout protection- Floor mats, carpeted
- Gauge cluster, 12" diagonal color with driver information display with multiple selectable modes and gauge configurations
- Hatch release, push button open

Option Packages

Factory Installed Packages

ENGINE, 6.2L V8 DI, HIGH-OUTPUT

Variable Valve Timing (VVT), Active Fuel Management (AFM) (490 hp [365.4 kW] @ 6450 rpm, 465 lb-ft of torque [627.8 N-m] @ 5150 rpm)

TRANSMISSION, 8-SPEED DUAL CLUTCH, INCLUDES MANUAL AND AUTO MODES

- Keyless Open and Start includes 2 remote transmitters that enable automatic door unlock and open by touching door switch
- Lighting, interior, theater dimming
- Mulan leather seating surfaces with perforated inserts- Oil life monitoring system
- Remote vehicle starter system- Seat adjuster, driver 8-way power
- Seat adjuster, passenger 8-way power- Seat belt color, Black- Seats, GT1 bucket
- Steering column, power tilt and telescopic
- Steering wheel controls, audio, voice recognition, cruise and Driver Information Center
- Steering wheel, leather-wrapped
- Theft-deterrent system, vehicle, push button start, immobilizer and audible visual alarm
- Vehicle health management provides advanced warning of vehicle issues
- Visors, driver and passenger illuminated vanity mirrors, covered
- Windows, power with driver and passenger Express-Down/Up

Exterior

- Tires, 245/35ZR19 front and 305/30ZR20 rear, blackwall, all-season, performance
- Wheels, 19" x 8.5" (48.3 cm x 21.6 cm) front and 20" x 11" (50.8 cm x 27.9 cm) rear 5-open-spoke Bright Silver-painted aluminum
- Carbon Flash Exterior Badge Package
- Exterior accents, Carbon Flash, side vents and front/rear grille accents
- Glass, Solar-Ray light-tinted- Headlamps, LED
- Mirrors, outside heated, power-adjustable, manual-folding with turn signal indicators
- Roof panel, body-color, removable- Wipers, front intermittent

Safety

- Air conditioning, dual-zone automatic climate control individual climate settings for driver and passenger, with outside temperature display
- Air filtration system with pollen filter
- Chevrolet Connected Access (Subject to terms. See onstar.com or dealer for details.)
- Console, floor 2 covered cup holders, auxiliary power outlet, USB ports, auxiliary input jack and lockable storage
- Cruise control, electronic with set and resume speed - Defogger, rear-window, electric
- Door locks, power programmable with lockout protection- Floor mats, carpeted
- Gauge cluster, 12" diagonal color with driver information display with multiple selectable modes and gauge configurations
- Hatch release, push button open
- Keyless Open and Start includes 2 remote transmitters that enable automatic door unlock and open by touching door switch
- Lighting, interior, theater dimming
- Mulan leather seating surfaces with perforated inserts- Oil life monitoring system
- Remote vehicle starter system- Seat adjuster, driver 8-way power
- Seat adjuster, passenger 8-way power- Seat belt color, Black- Seats, GT1 bucket
- Steering column, power tilt and telescopic
- Steering wheel controls, audio, voice recognition, cruise and Driver Information Center
- Steering wheel, leather-wrapped
- Theft-deterrent system, vehicle, push button start, immobilizer and audible visual alarm
- Vehicle health management provides advanced warning of vehicle issues
- Visors, driver and passenger illuminated vanity mirrors, covered
- Windows, power with driver and passenger Express-Down/Up

Mechanical

- Brakes, 4-wheel antilock, 4-wheel disc 12.6" (321 mm) front and 13.3" (339 mm) rear brake rotors
- Calipers, Black-painted- Differential, mechanical limited-slip
- Engine, 6.2L V8 DI, high-output Variable Valve Timing (VVT), Active Fuel Management (AFM) (490 hp [365.4 kW] @ 6450 rpm, 465 lb-ft of torque [627.8 N-m] @ 5150 rpm)
- Exhaust, aluminized stainless-steel with stainless-steel tips - Frame, aluminum structure
- Rear wheel drive- Steering, power, magnetic rack-and-pinion, variable assist
- Suspension, Corvette standard
- Transmission, 8-speed dual clutch, includes manual and auto modes

SUSPENSION, Z51 PERFORMANCE

Z51 PERFORMANCE PACKAGE

includes (J55) Z51 performance brakes, (FE3) Z51 performance suspension, (NPP) performance exhaust, (GM7) performance rear axle ratio, (G96) Electronic Limited Slip Differential (eLSD), (T0A) Z51 rear spoiler, front splitter, (XFQ) 245/35ZR19 front and 305/30ZR20 rear, blackwall, high performance tires and (V08) heavy-duty cooling system

\$5,995

EMISSIONS OVERRIDE, FEDERAL

RAPID BLUE

\$500

STANDARD PAINT

1LT PREFERRED EQUIPMENT GROUP

includes standard equipment

SEAT BELT COLOR, TORCH RED

\$395

JET BLACK, MULAN LEATHER SEATING SURFACES WITH PERFORATED INSERTS

SEATS, GT1 BUCKET

Option Packages Total

\$6,890

AUTOPARK

Dallas

Auto Park Dallas

View this car on our website at autoparkdallas.com/7094268

Website: autoparkdallas.com

Phone: (214) 945-2601

Map: 2061 S Stemmons Fwy, Lewisville, TX 75067

