



## 2002 Ferrari 360 Spider

Website Price \$98,995

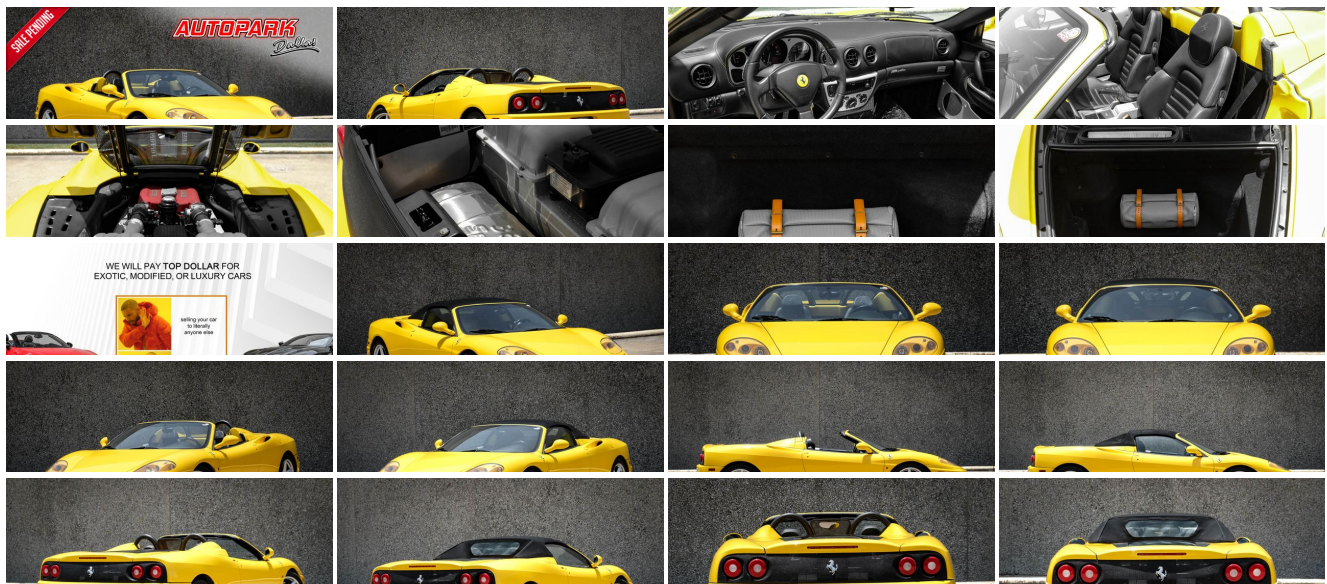
View this vehicle on our website at [autoparkdallas.com](http://autoparkdallas.com)



(214) 945-2601

2061 S Stemmons Fwy , Lewisville, TX 75067

- Photos
- Details
- Contact



## Specifications:

<b>Year:</b>	2002
<b>VIN:</b>	<a href="#">ZFFYT53A720127182</a>
<b>Make:</b>	Ferrari
<b>Stock:</b>	1112
<b>Model/Trim:</b>	360 Spider
<b>Condition:</b>	Pre-Owned
<b>Body:</b>	Convertible
<b>Exterior:</b>	Giallo Modena
<b>Engine:</b>	3.6L DOHC MPFI 40-valve V8 engine
<b>Interior:</b>	Nero Leather
<b>Transmission:</b>	6-SPEED F1 STYLE PADDLE SHIFT MANUAL TRANSMISSION
<b>Mileage:</b>	14,800
<b>Drivetrain:</b>	Rear Wheel Drive
<b>Economy:</b>	City 10 / Highway 16

## Vehicle Description

AutoPark Dallas is thrilled to offer you this Handcrafted Beautiful Piece of Art the 2002 Ferrari 360 Spider for sale! The Ferrari 360 was seen to be the flagship model that would bring about a refined look that captured the essence of this Italian powerhouse. The target goal from Ferrari was to make the 360 faster than its predecessor, the Ferrari F355, which was achieved by using an aluminum body to decrease the weight and redesign the style so that it purely sought after aerodynamics allowing for greater downforce as the 400 horses from the 3.6L V8 Mid-Engine are released! The 360 Spider we have here at APD is in Pristine condition with the Giallo Modena (Yellow) Exterior gleaming in the sun and Classic Black Ferrari Leather interior that is equally in amazing condition, the low mileage and well kept condition just shows the love and respect given to this exotic masterpiece! DO. NOT. HESITATE!!! To check out this Ferrari 360 Spider parked here in our indoor 16,000 Sq Ft Showroom located in Dallas , Texas amongst our inventory of 100+ other Performance / Modified and Luxury cars!

---

### 2002 Ferrari 360 Spider

\* Clean CarFax !\*

\* 2 Set of Keys !\*

Giallo Modena Exterior

Nero Leather Interior

Single-Zone Air Conditioning

Powered Seats

Sport Mode

3.6L DOHC MPFI 40-Valve V8 Engine

Electrohydraulic-Actuated "F1" Automated Manual Transmission

Rear Wheel Drive

Professionally Detailed!

Well Maintained!

\* Free CarFax Report !\*

AND SO MUCH MORE!!!

---

## Financing is available!

Check out our Payment Calculator to get an estimate on your monthly payments!

OR

Get pre-approved in no time by filling out a credit application on the 'Finance' section of our website!

We also offer MANY different Extended Warranty options!

---

**Check out our Google Reviews by \*Clicking\* this LINK!**

Referrals and Testimonials is what our business is built on!

---

The team here at AutoPark Dallas, is dedicated to offering a level of customer service not usually found in the automobile industry. Thanks to years of extensive car buying / selling experience, we pursue quality used and new vehicles that are hand-picked from factory sources. Our love for automobiles and dislike of traditional dealership tactics is what motivates us to provide the service we do! The pride we take in continuing this service long after the vehicle has been delivered is what we strive for! Looking forward to making every effort to see that our customer is completely satisfied and a friend for life!

Pre-purchase inspections are always welcomed!

We also offer airport pick-up, competitive financing options, free CarFax Reports, Car Shipping nationwide, Extended Warranty plans, and so much more!

Trade-In(s) are always accepted or sell us your used car (MODIFIED OR NOT)! Please call or text for more information about Trade-Ins or selling your car to us @ (214) 945-2601!

---

**#(214) 945-2601**

**Call or Text *Anytime!***

**Se habla Español**

**WE BUY CARS!**

**WWW.AUTOPARKDALLAS.COM**

## Vehicle History Report : as Of 05/17/2025



### Snapshot

## 2002 FERRARI 360 SPIDER



No accidents or damage reported to CARFAX



18 Service history records



7 Previous owners



Types of owners: Corporate  
Personal



Last owned in Florida



14,800 Last reported odometer reading



**FREE CARFAX Report**

See the full CARFAX Report for additional information

\*carfax Snapshot is a reflection of available information on the date the report was pulled. carfax is constantly being updated with new information and is subject to change at any time.

## Installed Options

### Interior

- (4) speakers- AM/FM stereo w/CD- Alloy trim on gear knob- Cigar lighter w/ashtray
- Driver/passenger door pocket bins
- Leather adjustable driver/passenger seat w/lumbar adjustment
- Leather covered tilt/telescopic steering wheel- Leather trim on doors & dashboard
- Lighting-inc: delayed fade courtesy lights, reading lights- Passenger vanity mirror
- Peripheral anti-theft protection- Pwr front windows w/one-touch down feature
- Pwr remote trunk/hatch release- Rear window defogger- Remote fuel filler door release
- Remote pwr locks

### Exterior

- Door edge hazard lights- Driver/passenger pwr heated body color door mirrors
- Projector beam lens halogen bulb headlights- Pwr retractable top- Rear fog lights
- Tinted glass on cabin- Variable intermittent windshield wipers

### Safety

- (4) speakers- AM/FM stereo w/CD- Alloy trim on gear knob- Cigar lighter w/ashtray
- Driver/passenger door pocket bins
- Leather adjustable driver/passenger seat w/lumbar adjustment
- Leather covered tilt/telescopic steering wheel- Leather trim on doors & dashboard
- Lighting-inc: delayed fade courtesy lights, reading lights- Passenger vanity mirror
- Peripheral anti-theft protection- Pwr front windows w/one-touch down feature
- Pwr remote trunk/hatch release- Rear window defogger- Remote fuel filler door release
- Remote pwr locks

### Mechanical

- 6-Speed manual transmission- 13" x 1.1" front/rear disc brakes
- 18" x 10" rear alloy wheels- 18" x 7.5" front alloy wheels
- 3.6L DOHC MPFI 40-valve V8 engine- Electronic traction control
- Front/rear stabilizer bar- Independent front/rear wishbone suspension w/coil springs
- Limited slip rear differential- P215/45/ZR18 front tires- P275/40/ZR18 rear tires
- Rear wheel drive- Vehicle speed proportional pwr steering

## Option Packages

### Factory Installed Packages

---

6-SPEED F1 STYLE PADDLE SHIFT MANUAL TRANSMISSION	\$10,050
---	----------

---

BRAKE CALIPERS IN RED COLOR	\$623
-----------------------------	-------

---

STANDARD PAINT	
----------------	--

---

NERO INTERIOR COLOR	
---------------------	--

---

LEATHER ADJUSTABLE DRIVER/PASSENGER SEAT -inc: lumbar adjustment	
---	--

---

PWR SEATS	\$1,891
-----------	---------

---

Option Packages Total	\$12,564
-----------------------	----------



Auto Park Dallas

View this car on our website at [autoparkdallas.com/7094052](http://autoparkdallas.com/7094052)

Website: [autoparkdallas.com](http://autoparkdallas.com)

Phone: (214) 945-2601

Map: [2061 S Stemmons Fwy, Lewisville, TX 75067](#)

