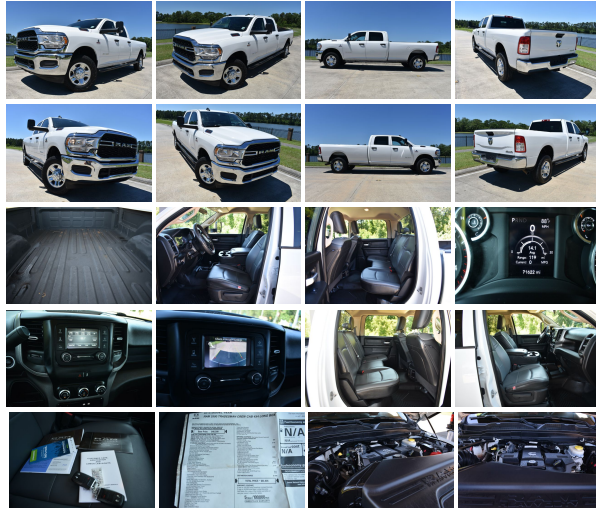


## 2019 Ram 2500 Tradesman

View this car on our website at [trucksinlouisiana.com/7093311/ebrochure](http://trucksinlouisiana.com/7093311/ebrochure)



Our Price **\$45,990**

Retail Value **\$47,425**

### Specifications:

|             |   |
|-------------|---|
| Year:       | 2019                                    |
| VIN:        | 3C6UR5HL3KG639921                       |
| Make:       | Ram                                     |
| Model/Trim: | 2500 Tradesman                          |
| Condition:  | Pre-Owned                               |
| Body:       | Pickup Truck                            |
| Exterior:   | -                                       |
| Engine:     | ENGINE: 6.7L I6 CUMMINS TURBO<br>DIESEL |
| Interior:   | Gray                                    |
| Mileage:    | 71,513                                  |
| Drivetrain: | 4 Wheel Drive                           |

6.7L CUMMINS DIESEL

FOUR WHEEL DRIVE

You are looking at a 2019 Dodge Ram 2500 Crew Cab 4X4. It is powered with a 6.7L Cummins Diesel I-6 and automatic transmission. It is equipped with power trailer mirrors, power windows, power locks, tilt, cruise, receiver hitch, spray in bed line, and am/fm radio. Also included are the owner's manuals and one keyless

remote.

The interior of this truck is in good shape for the mileage. The seats are in good shape. The floor is in good shape. Everything appears to function properly.

The exterior of this truck overall is in good shape for the mileage. There maybe a work truck flaw, but overall it is in good shape. If you are a serious buyer please call and allow us to give you a thorough walk around to make sure it meets your criteria. The windshield is in good shape.

Mechanically this truck starts right up and runs smooth. The transmission shifts smooth. The a/c blows ice cold. The front end is tight. The four wheel drive functions properly. The tires are in good shape.

**FINANCING:** We do not do financing/ in house financing. However, if you have good credit ( 650 score or higher ) we can suggest a lender within the state of Louisiana. If you are outside of Louisiana and have good credit we can also help with locate a lender.

## NADA VALUES

ROUGH TRADE IN

\$40,250

AVERAGE TRADE IN

\$42,200

CLEAN TRADE IN     \$43,800

RETAIL

\$47,425

This truck is located @ 13359  
Miller Rd. Walker, LA  
70785. Exit I-12 at the Walker  
Rd., Exit #15

If you have any questions  
about this truck or would like  
to receive an AutoCheck,  
please call one of our Sales  
Representatives @ 225-445-  
5381 or 225-326-2639

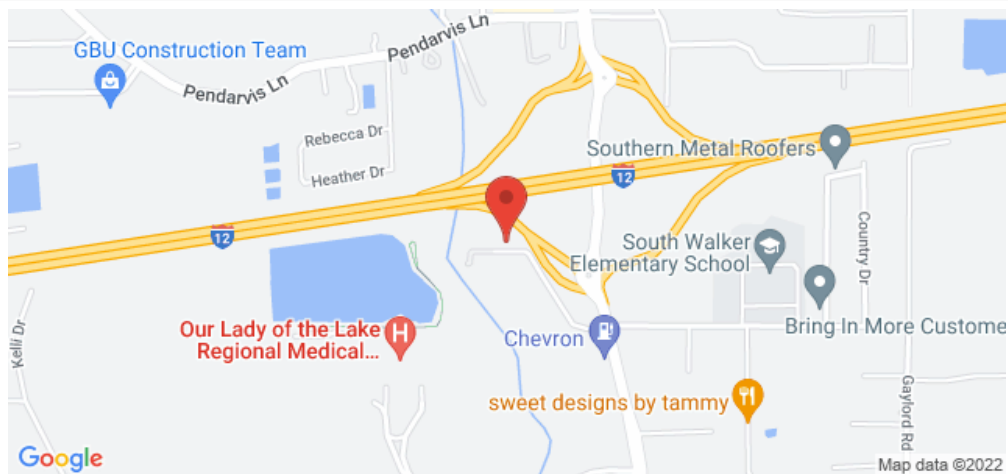
Visit [WWW.TRUCKSINLOUISIANA.C](http://WWW.TRUCKSINLOUISIANA.C)

It is the customer's  
responsibility to inspect the  
truck before agreement to  
purchase. Upon agreement to  
purchase, there is a \$500  
deposit. The deposit is non  
refundable unless a major  
issue was not disclosed by the  
seller. The remaining balance  
is due via cash, cashiers  
check, or bank wire within 5  
days. If you need help with

days. If you need help with shipping call PJ @ All States Auto Transport: 1-866-342-1082, or 1-712-898-5727. There is also a mandatory \$195 Documentation charge.

At our dealership we work very hard to accurately describe our vehicles through text descriptions and elaborate photos. When you purchase a pre-owned vehicle it is not a new vehicle. Any used vehicle can have normal wear and blemishes. Before placing a bid please read the descriptions thoroughly and view all pictures. All vehicles sold as is no warranty.

## Our Location :



2019 Ram 2500 Tradesman

Boardwalk Motorcars LLC - 225-326-2639 - View this car on our website at [trucksinlouisiana.com/7093311/ebrochure](http://trucksinlouisiana.com/7093311/ebrochure)

## Installed Options

### Interior

- 2 12V DC Power Outlets- 2 Way Rear Headrest Seat- 4 Way Front Headrests
- 4-Way Passenger Seat -inc: Manual Recline and Fore/Aft Movement
- 40/20/40 Split Bench Seat- Analog Appearance- Compass
- Cruise Control w/Steering Wheel Controls- Day-Night Rearview Mirror
- Delayed Accessory Power- Driver Seat- Fade-To-Off Interior Lighting
- Front Center Armrest w/Storage- Front Map Lights- Full Cloth Headliner
- Full Vinyl/Rubber Floor Covering
- Gauges -inc: Speedometer, Odometer, Voltmeter, Oil Pressure, Engine Coolant Temp, Tachometer, Oil Temperature, Transmission Fluid Temp, Engine Hour Meter and Trip Odometer
- Glove Box- HVAC -inc: Underseat Ducts and Console Ducts
- Heavy Duty Vinyl 40/20/40 Split Bench Seat- Illuminated Front Cupholder
- Instrument Panel Bin, Dashboard Storage, Driver / Passenger And Rear Door Bins and 2nd Row Underseat Storage
- Interior Trim -inc: Metal-Look Instrument Panel Insert and Chrome/Metal-Look Interior Accents
- Manual Adjust 4-Way Driver Seat- Manual Air Conditioning- Manual Tilt Steering Column
- Outside Temp Gauge
- Partial Floor Console w/Storage, Mini Overhead Console and 2 12V DC Power Outlets
- Passenger Visor Vanity Mirror- Pickup Cargo Box Lights
- Power 1st Row Windows w/Driver And Passenger 1-Touch Up/Down
- Power Door Locks w/Autolock Feature- Power Rear Windows
- Proximity Key For Push Button Start Only - Rear Cupholder- Rear Folding Seat
- Seats w/Vinyl Back Material- Selectable Tire Fill Alert- Sentry Key Engine Immobilizer
- Systems Monitor- Urethane Gear Shifter Material- Vinyl Rear Seat

### Exterior

- Auto On/Off Aero-Composite Halogen Daytime Running Headlamps w/Delay-Off
- Black Door Handles- Black Exterior Mirrors- Black Front Bumper- Black Grille
- Black Rear Step Bumper- Black Side Windows Trim and Black Front Windshield Trim
- Cargo Lamp w/High Mount Stop Light- Center Hub- Clearcoat Paint- Deep Tinted Glass
- Exterior Mirrors w/Heating Element- Fixed Rear Window- Front License Plate Bracket
- Full-Size Spare Tire Stored Underbody w/Crankdown- Galvanized Steel/Aluminum Panels
- Manual Tailgate/Rear Door Lock- Power Side Mirrors w/Manual Folding
- Regular Box Style- Steel Spare Wheel- Tailgate Rear Cargo Access
- Tires: LT245/70R17E BSW AS- Variable Intermittent Wipers
- Wheels: 17" x 7.5" Steel Styled

### Safety

- 2 12V DC Power Outlets- 2 Way Rear Headrest Seat- 4 Way Front Headrests
- 4-Way Passenger Seat -inc: Manual Recline and Fore/Aft Movement
- 40/20/40 Split Bench Seat- Analog Appearance- Compass
- Cruise Control w/Steering Wheel Controls- Day-Night Rearview Mirror
- Delayed Accessory Power- Driver Seat- Fade-To-Off Interior Lighting
- Front Center Armrest w/Storage- Front Map Lights- Full Cloth Headliner
- Full Vinyl/Rubber Floor Covering
- Gauges -inc: Speedometer, Odometer, Voltmeter, Oil Pressure, Engine Coolant Temp, Tachometer, Oil Temperature, Transmission Fluid Temp, Engine Hour Meter and Trip Odometer
- Glove Box- HVAC -inc: Underseat Ducts and Console Ducts
- Heavy Duty Vinyl 40/20/40 Split Bench Seat - Illuminated Front Cupholder
- Instrument Panel Bin, Dashboard Storage, Driver / Passenger And Rear Door Bins and 2nd Row Underseat Storage
- Interior Trim -inc: Metal-Look Instrument Panel Insert and Chrome/Metal-Look Interior Accents
- Manual Adjust 4-Way Driver Seat - Manual Air Conditioning- Manual Tilt Steering Column
- Outside Temp Gauge
- Partial Floor Console w/Storage, Mini Overhead Console and 2 12V DC Power Outlets
- Passenger Visor Vanity Mirror- Pickup Cargo Box Lights
- Power 1st Row Windows w/Driver And Passenger 1-Touch Up/Down
- Power Door Locks w/Autolock Feature- Power Rear Windows
- Proximity Key For Push Button Start Only - Rear Cupholder- Rear Folding Seat
- Seats w/Vinyl Back Material- Selectable Tire Fill Alert- Sentry Key Engine Immobilizer
- Systems Monitor- Urethane Gear Shifter Material- Vinyl Rear Seat

### Mechanical

- 180 Amp Alternator- 3.73 Axle Ratio- 3190# Maximum Payload- 32 Gal. Fuel Tank
- 4-Wheel Disc Brakes w/4-Wheel ABS, Front And Rear Vented Discs, Brake Assist and Hill Hold Control
- 50 State Emissions- 730CCA Maintenance-Free Battery w/Run Down Protection
- Auto Locking Hubs- Class V Towing Equipment -inc: Hitch and Trailer Sway Control
- Electronically Controlled Throttle- Engine: 6.4L Heavy Duty V8 HEMI w/MDS
- Front And Rear Anti-Roll Bars- GVWR: 10,000 lbs- HD Shock Absorbers
- HD Suspension- Hydraulic Power-Assist Steering- Manual Transfer Case
- Multi-Link Front Suspension w/Coil Springs- Multi-Link Rear Suspension w/Coil Springs
- Part-Time Four-Wheel Drive- Single Stainless Steel Exhaust- Tip Start
- Trailer Wiring Harness
- Transmission w/Driver Selectable Mode and Sequential Shift Control
- Transmission: 8-Speed Auto (8HP75-LCV)

### Option Packages

#### Factory Installed Packages

|   |                |
|---|----------------|
| <b>ENGINE: 6.7L I6 CUMMINS TURBO DIESEL</b>   |                |
| -inc: Selective Catalytic Reduction (Urea), Dual 730 Amp Maintenance Free Batteries, Cummins Turbo Diesel Badge, Heavy Duty Engine Cooling, Supplemental Heater, RAM Active Air, Tow Hooks, Diesel Exhaust Brake, Front Bumper Sight Shields, Capless Fuel Fill w/o Discriminator | <b>\$9,100</b> |
| <hr/>   |                |
| Option Packages Total   | <b>\$9,100</b> |

Boardwalk Motorcars LLC

[trucksinlouisiana.com](http://trucksinlouisiana.com)

225-326-2639

13359 Miller Rd

Walker, LA 70785

© 2022 AutoRevo - All rights reserved. - Powered by AutoRevo