

## 2022 Ram 1500 TRX 4X4 DUPONT KEVLAR,LIFTED,BUMPERS,LED'S,22'S

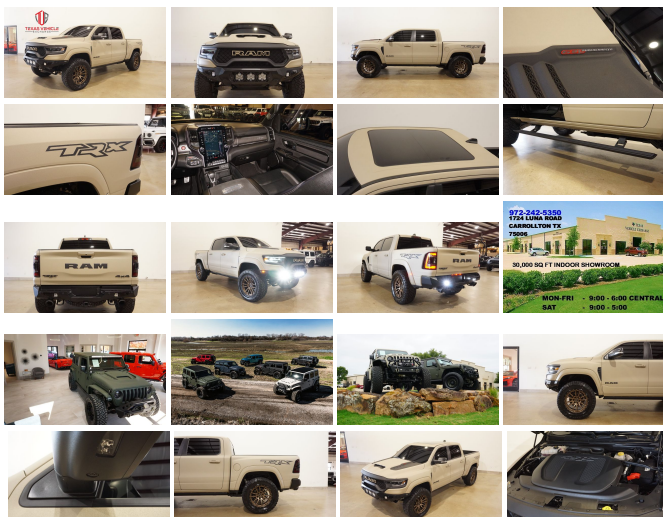
View this car on our website at [tveauto.com/7093103/ebrochure](https://tveauto.com/7093103/ebrochure)



Our Price **\$105,900**

### Specifications:

|                      |   |
|----------------------|---|
| <b>Year:</b>         | 2022  |
| <b>VIN:</b>          | 1C6SRFU91NN151795                                       |
| <b>Make:</b>         | Ram   |
| <b>Stock:</b>        | 151795  |
| <b>Model/Trim:</b>   | 1500 TRX 4X4 DUPONT<br>KEVLAR,LIFTED,BUMPERS,LED'S,22'S |
| <b>Condition:</b>    | Pre-Owned   |
| <b>Body:</b>         | Pickup Truck  |
| <b>Exterior:</b>     | Tan   |
| <b>Engine:</b>       | ENGINE: 6.2L SUPERCHARGED HEMI<br>V8 SRT                |
| <b>Interior:</b>     | Black Leather   |
| <b>Transmission:</b> | TRANSMISSION: 8-SPEED AUTOMATIC<br>(8HP95)              |
| <b>Mileage:</b>      | 21,435  |
| <b>Drivetrain:</b>   | 4 Wheel Drive   |
| <b>Economy:</b>      | City 10 / Highway 14                                    |



NATION WIDE FINANCING

SUBMIT CREDIT APP [WWW.TVEAUTO.COM](https://www.tveauto.com)

OR CALL 972-242-5350

2022 RAM 1500 TRX CREW CAB 4X4, 6.2L SUPERCHARGED HEMI V8 SRT ENGINE, 8 SPEED AUTOMATIC TRANSMISSION, ONLY 21,435 MILES, GOBI TAN KEVLAR COATING W/BLACK LEATHER INTERIOR, CARFAX REPORTS 2 OWNERS NO ACCIDENTS, APPEARS TO BE A NON-SMOKER, ADVANCED SAFETY GROUP (\$995.00), TRX CARBON FIBER PACKAGE (\$1,295.00), TRX LEVEL 2 EQUIPMENT GROUP (\$10,295.00), REMOTE START CUSTOM 2" LEVEL KIT

REMOTE START, CUSTOM LEVELING,  
ADDICTIVE DESERT DESIGNS BOMBER  
FRONT BUMPER WITH 3 BAJA DESIGNS  
LP6 ROUND LED LIGHTS & 2 BAJA DESIGNS  
SQUADRON SIDE LED LIGHTS, FRONT &  
REAR PARK DISTANCE SENSORS, DUAL-  
PANE PANORAMIC SUNROOF (\$1,495.00),  
12.0" TOUCH SCREEN NAVIGATION, BACK-  
UP CAMERA, 360 VIEW CAMERAS, POWER  
RETRACTABLE RUNNING BOARDS, POWER  
WINDOWS, POWER DOOR LOCKS, POWER  
FOLDING HEATED MIRRORS WITH TURN  
SIGNALS, BLIND SPOT CONTROL, HEATED  
TILT/TELESCOPE STEERING WHEEL WITH  
AUDIO & CRUISE CONTROLS, PADDLE  
SHIFTERS, DUAL POWER HEATED &  
COOLED FRONT SEATS WITH DRIVER 2  
MEMORY POSITION, POWER ADJUSTABLE  
PEDALS, LANE KEEP SENSE, TRACTION  
CONTROL, HILL DESCENT CONTROL, TRX  
MODE, LAUNCH MODE, TRAILER BRAKE  
CONTROLLER, AUXILIARY SWITCHES, ICE  
COLD A/C, DUAL CLIMATE CONTROL,  
ALPINE HD AM/FM/SIRIUS STEREO, U-  
CONNECT, SELF DIMMING REAR VIEW  
MIRROR, HOMELINK GARAGE CONTROLS,  
DUAL LIGHTED VANITY MIRRORS, REAR  
HEATED & COOLED SEATS, REAR A/C  
VENTS, POWER SLIDING REAR WINDOW,  
SPRAY IN BEDLINER, TINTED TAIL LIGHTS,  
ADDICTIVE DESERT DESIGNS BOMBER  
REAR BUMPER WITH 2 BAJA DESIGNS  
SQUADRON LED LIGHTS, TOW PACKAGE  
WITH RECEIVER HITCH, RUBBER FLOOR  
MATS, OWNER'S MANUAL, 2 KEYS/2  
REMOTES. 22" FUEL BRONZE "REBEL 6"  
WHEELS, FRONT TIRES ARE NITTO RIDGE  
GRAPPLER 37X12.50R/22, REAR TIRES ARE  
NITTO RIDGE GRAPPLER 37X12.50R/22.  
RUNS AND DRIVES GREAT. GIVE US A  
CALL @ 972-242-5350 OR STOP BY FOR A  
TEST DRIVE. 1724 LUNA RD IN  
CARROLLTON - 2 MILES NORTH OF  
635. CLICK ON CARFAX ICON TO VIEW A  
FULL REPORT AT NO COST TO YOU.

**Vehicle History Report : as Of 07/12/2024**



**Snapshot**

**2022 RAM 1500 TRX**



No accidents or damage reported to CARFAX



7 Service history records



2 Previous owners



Types of owners: Commercial  
Personal



Last owned in Texas



20,304 Last reported odometer reading



**FREE CARFAX Report**

See the full CARFAX Report for additional information

\*carfax Snapshot is a reflection of available information on the date the report was pulled. carfax is constantly being updated with new information and is subject to change at any time.

**Our Location :**



2022 Ram 1500 TRX 4X4 DUPONT KEVLAR,LIFTED,BUMPERS,LED'S,22'S

Texas Vehicle Exchange - 972-242-5350 - View this car on our website at [veauto.com/7093103/ebrochure](http://veauto.com/7093103/ebrochure)

**Installed Options**

**Interior**

- 8-Way Power Driver Seat -inc: Power Recline, Height Adjustment, Fore/Aft Movement and Cushion Tilt
- Cloth/Vinyl Bucket Seats- Day-Night Auto-Dimming Rearview Mirror
- FOB Controls -inc: Remote Engine Start
- Gauges -inc: Speedometer, Odometer, Voltmeter, Oil Pressure, Engine Coolant Temp, Tachometer, Inclinator, Altimeter, Oil Temperature, Transmission Fluid Temp, Engine Hour Meter, Trip Odometer and Trip Computer
- Passenger Visor Vanity Mirror w/Passenger Illumination
- Power 1st Row Windows w/Driver And Passenger 1-Touch Up/Down
- Power Door Locks w/Autolock Feature- Power Rear Windows
- Proximity Key For Push Button Start Only - Rear 60/40 Folding Seat
- Remote Keyless Entry w/Integrated Key Transmitter, Illuminated Entry and Panic Button
- Seats w/Cloth Back Material- Smart Device Remote Engine Start
- Sport Leather Steering Wheel- Trip Computer- 2 12V DC Power Outlets
- 2 12V DC Power Outlets and 2 120V AC Power Outlets - 4 Way Front Headrests
- 4-Way Passenger Seat -inc: Manual Recline and Fore/Aft Movement
- 4G LTE Wi-Fi Hot Spot Mobile Hotspot Internet Access- Air Filtration

**Option Packages**

**Factory Installed Packages**

ENGINE: 6.2L SUPERCHARGED HEMI V8 SRT

TRANSMISSION: 8-SPEED AUTOMATIC (8HP95)

**ADVANCED SAFETY GROUP**

-inc: Tailgate Ajar Warning Lamp, Adaptive Cruise Control w/Stop & Go, Pedestrian Emergency Braking, Lane Keep Assist **\$995**

**DUAL-PANE PANORAMIC SUNROOF**

-inc: Dome Dual LED Reading Lamp **\$1,495**

**TRX CARBON FIBER PACKAGE**

-inc: Leather/Carbon Flat-Bottom Steering Wheel, Real Carbon Fiber Interior Accents **\$1,295**

- Analog Appearance- Bucket Seats- Compass- Cruise Control w/Steering Wheel Controls
- Delayed Accessory Power- Dual Zone Front Automatic Air Conditioning w/Front Infrared
- Fade-To-Off Interior Lighting- Front Center Armrest w/Storage and Rear Center Armrest
- Front Facing Cloth/Vinyl Rear Seat- Front Map Lights- Front Seat Back Map Pockets
- Full Carpet Floor Covering MOPAR -inc: Vinyl/Rubber Front And Rear Floor Mats
- Full Cloth Headliner
- Full Floor Console w/Covered Storage, Mini Overhead Console w/Storage, 2 12V DC Power Outlets and 2 120V AC Power Outlets
- HVAC -inc: Underseat Ducts and Console Ducts - Illuminated Front Cupholder
- Illuminated Locking Glove Box
- Instrument Panel Bin, Dashboard Storage, Interior Concealed Storage, Driver / Passenger And Rear Door Bins
- Interior Trim -inc: Deluxe Sound Insulation, Metal-Look/Piano Black Instrument Panel Insert, Piano Black Door Panel Insert, Metal-Look Console Insert and Aluminum/Metal-Look Interior Accents
- Leather/Metal-Look Gear Shifter Material- Manual Adjustable Rear Head Restraints
- Manual Tilt/Telescoping Steering Column- Outside Temp Gauge- Perimeter Alarm
- Pickup Cargo Box Lights- Power 4-Way Driver Lumbar Adjust- Rear Cupholder
- Redundant Digital Speedometer- Sentry Key Engine Immobilizer
- Smart Device Integration- Systems Monitor- Valet Function- Vinyl Door Trim Insert

## Exterior

- Black Front Bumper w/Metal-Look Rub Strip/Fascia Accent and 2 Tow Hooks
- Black Rear Step Bumper w/1 Tow Hook - Exterior Mirrors w/Heating Element
- Exterior Mirrors w/Supplemental Signals
- Power Side Mirrors w/Driver Auto Dimming and Convex Spotter - Power-Folding Mirrors
- Tailgate/Rear Door Lock Included w/Power Door Locks - Variable Intermittent Wipers
- Wheels: 18" x 9" Black Paint/Polish Aluminum - Aluminum Spare Wheel
- Auto On/Off Aero-Composite Led Low/High Beam Daytime Running Auto High-Beam Headlamps w/Delay-Off
- Black Door Handles- Black Exterior Mirrors- Black Fender Flares- Black Grille
- Black Side Windows Trim- Cab Clearance Lights- Cargo Lamp w/High Mount Stop Light
- Clearcoat Paint w/Decal- Deep Tinted Glass- Exterior Mirrors Courtesy Lights
- Front Fog Lamps- Full-Size Spare Tire Stored Underbody w/Crankdown
- Galvanized Steel/Aluminum Panels- Headlights-Automatic Highbeams- LED Brakelights
- Laminated Glass- Power Rear Window- Regular Box Style- Tailgate Rear Cargo Access
- Tires: LT325/65R18D All Terrain

## Safety

- 8-Way Power Driver Seat -inc: Power Recline, Height Adjustment, Fore/Aft Movement and Cushion Tilt
- Cloth/Vinyl Bucket Seats- Day-Night Auto-Dimming Rearview Mirror
- FOB Controls -inc: Remote Engine Start
- Gauges -inc: Speedometer, Odometer, Voltmeter, Oil Pressure, Engine Coolant Temp, Tachometer, Inclinator, Altimeter, Oil Temperature, Transmission Fluid Temp, Engine Hour Meter, Trip Odometer and Trip Computer
- Passenger Visor Vanity Mirror w/Passenger Illumination
- Power 1st Row Windows w/Driver And Passenger 1-Touch Up/Down
- Power Door Locks w/Autolock Feature- Power Rear Windows
- Proximity Key For Push Button Start Only - Rear 60/40 Folding Seat
- Remote Keyless Entry w/Integrated Key Transmitter, Illuminated Entry and Panic Button
- Seats w/Cloth Back Material- Smart Device Remote Engine Start
- Sport Leather Steering Wheel- Trip Computer- 2 12V DC Power Outlets
- 2 12V DC Power Outlets and 2 120V AC Power Outlets - 4 Way Front Headrests
- 4-Way Passenger Seat -inc: Manual Recline and Fore/Aft Movement
- 4G LTE Wi-Fi Hot Spot Mobile Hotspot Internet Access - Air Filtration
- Analog Appearance- Bucket Seats- Compass- Cruise Control w/Steering Wheel Controls
- Delayed Accessory Power- Dual Zone Front Automatic Air Conditioning w/Front Infrared
- Fade-To-Off Interior Lighting- Front Center Armrest w/Storage and Rear Center Armrest
- Front Facing Cloth/Vinyl Rear Seat- Front Map Lights- Front Seat Back Map Pockets
- Full Carpet Floor Covering MOPAR -inc: Vinyl/Rubber Front And Rear Floor Mats
- Full Cloth Headliner
- Full Floor Console w/Covered Storage, Mini Overhead Console w/Storage, 2 12V DC Power Outlets and 2 120V AC Power Outlets
- HVAC -inc: Underseat Ducts and Console Ducts - Illuminated Front Cupholder
- Illuminated Locking Glove Box
- Instrument Panel Bin, Dashboard Storage, Interior Concealed Storage, Driver / Passenger And Rear Door Bins
- Interior Trim -inc: Deluxe Sound Insulation, Metal-Look/Piano Black Instrument Panel Insert, Piano Black Door Panel Insert, Metal-Look Console Insert and Aluminum/Metal-Look Interior Accents
- Leather/Metal-Look Gear Shifter Material- Manual Adjustable Rear Head Restraints
- Manual Tilt/Telescoping Steering Column- Outside Temp Gauge- Perimeter Alarm

## TRX LEVEL 2 EQUIPMENT GROUP

-inc: Full Length Premium Upgraded Floor Console, Rear Window Defroster, Surround View Camera System, Blind Spot & Cross Path Detection, Rain Sensitive Windshield Wipers, LED CHMSL Lamp, ParkSense Front/Rear Park Assist w/Stop, Power Adjustable Pedals w/Memory, Pick-Up Box Lighting, Body Color Door Handles, MOPAR Bright Pedal Kit, IP LED Ambient Light Pipe, Rear Underseat Compartment Storage, Trailer Brake Control, Head Up Display, Heated Second Row Seats, Heated Steering Wheel, Leather/Suede Flat-Bottom Steering Wheel, Wireless Charging Pad, Driver/Passenger Wrapped Assist Handles, Ventilated Rear Seats, Rear 60/40 Folding Split Recline Seat, Ventilated Front Seats, Remote Tailgate Release, harman/kardon 19 Speaker Premium Sound, Premium Wrapped IP Bezel, Remote Proximity Keyless Entry, Universal Garage Door Opener, Exterior Mirrors w/Memory, Luxury Front Door Trim Panel, Driver Seat Memory, Front Door Accent Lighting, Power 8-Way Driver & Passenger Seats

\$10,295

## QUICK ORDER PACKAGE 29Y

-inc: Engine: 6.2L Supercharged HEMI V8 SRT, Transmission: 8-Speed Automatic (8HP95)

## Option Packages Total

\$14,080

- Pickup Cargo Box Lights- Power 4-Way Driver Lumbar Adjust- Rear Cupholder
- Redundant Digital Speedometer- Sentry Key Engine Immobilizer
- Smart Device Integration- Systems Monitor- Valet Function- Vinyl Door Trim Insert

---

## Mechanical

- 1310# Maximum Payload- 250 Amp Alternator- 3.55 Rear Axle Ratio- 33 Gal. Fuel Tank
- 4-Wheel Disc Brakes w/4-Wheel ABS, Front And Rear Vented Discs, Brake Assist, Hill Descent Control, Hill Hold Control and Electric Parking Brake
- 5 Skid Plates- 50 State Emissions- 800CCA Maintenance-Free Battery
- Auto Locking Hubs- Automatic Full-Time Four-Wheel Drive
- Automatic w/Driver Control Ride Control Off-Road Adaptive Suspension
- Bilstein Brand Name Shock Absorbers
- Class IV Towing Equipment -inc: Hitch and Trailer Sway Control
- Driver Selectable Rear Locking Differential
- Dual Stainless Steel Exhaust w/Black Tailpipe Finisher- Electric Power-Assist Steering
- Electronic Transfer Case- Engine Oil Cooler- Engine: 6.2L Supercharged HEMI V8 SRT
- Front Anti-Roll Bar- GVWR: 7,800 lbs- Multi-Link Rear Suspension w/Coil Springs
- Short And Long Arm Front Suspension w/Coil Springs- Trailer Wiring Harness
- Transmission w/Driver Selectable Mode and Sequential Shift Control w/Steering Wheel Controls
- Transmission: 8-Speed Automatic (8HP95)

---

Texas Vehicle Exchange

[tveauto.com](http://tveauto.com)

972-242-5350

1724 Luna Road

Carrollton, TX 75006

© 2024 AutoRevo - All rights reserved. - Powered by [AutoRevo](#)