

2001 Mercedes-Benz SL600

Danny Diedrich 602-513-3298

View this car on our website at arizonaclassiccarsales.com/7091635/ebrochure

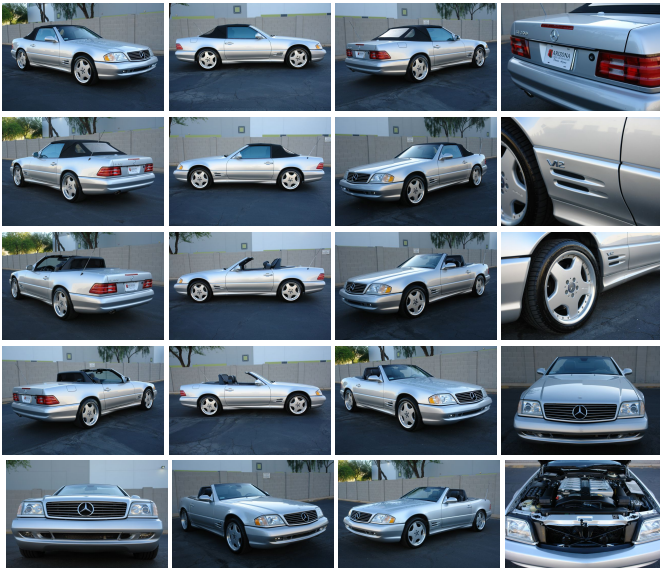


Our Price **\$54,950**

Retail Value ~~\$63,950~~

Specifications:

Year:	2001
VIN:	WDBFA76F71F198732
Make:	Mercedes-Benz
Stock:	198732
Model/Trim:	SL600
Condition:	Pre-Owned
Body:	Convertible
Exterior:	Silver
Engine:	6.0L DOHC SMFI 48-valve aluminum-alloy V12 engine
Interior:	Black Leather
Mileage:	16,488
Drivetrain:	Rear Wheel Drive
Economy:	City 13 / Highway 19



2001 Mercedes-Benz SL600

Arizona Classic Car Sales - 602-513-3298 - View this car on our website at arizonaclassiccarsales.com/7091635/ebrochure

Vehicle History Report : as Of 05/20/2022

Our Location :



Snapshot

2001 MERCEDES-BENZ SL600

 No accidents or damage reported to CARFAX

 **4** Service history records

 **3** Previous owners

 Personal vehicle

 Last owned in Arizona

 **15,387** Last reported odometer reading



FREE CARFAX Report

See the full CARFAX Report for additional information

*carfax Snapshot is a reflection of available information on the date the report was pulled. carfax is constantly being updated with new information and is subject to change at any time.

2001 Mercedes-Benz SL600

Arizona Classic Car Sales - 602-513-3298 - View this car on our website at arizonaclassiccarsales.com/7091635/ebrochure

Installed Options

Interior

- 10-way pwr front bucket seats w/head restraints - Adjustable front center armrest
- Anti-theft alarm system w/starter interlock
- Automatic climate control-inc: dust filter, residual-heat REST mode
- Bose sound system w/Acousticmass-inc: anti-theft-coded AM/FM stereo/weather band radio & auto reverse cassette player, auto speed-dependent volume adjustment, 6-speakers
- Burl hardwood interior trim on doors, dash, console, shiftgate - Cruise control
- Dual illuminated visor vanity mirrors- Heated front seats- Heated rear window
- Integrated portable cellular telephone
- Leather trim on door inserts/dash/console/roll bar/inside hardtop
- Nappa leather seats, head restraints- Pwr AM/FM/cellular antenna- Pwr door locks
- Pwr tilt/telescoping steering column
- Pwr windows w/express-down control for each window & 1-touch up/down for both windows via soft-top switch
- Rearview mirror w/auto-dimming feature- Remote illuminated entry
- Remote infrared locking system-inc: doors, trunk release, 4 inside storage compartments, window closing
- Trunk mounted 6-disc compact disc changer- Universal integrated garage door opener
- Velour carpeting & floor mats

Exterior

- Auto dimming driver mirror- Automatic convertible soft top
- Automatic pop-up padded rollbar
- Dual heated pwr remote outside mirrors w/3-position memory
- Eccentric-sweep intermittent windshield wiper w/heated washer system/wiper parking position, rain sensor wiper activation
- Halogen front foglamps- Red rear foglamp- Removable aluminum hard convertible top
- Xenon high-intensity-discharge headlamps

Safety

- 10-way pwr front bucket seats w/head restraints - Adjustable front center armrest
- Anti-theft alarm system w/starter interlock
- Automatic climate control-inc: dust filter, residual-heat REST mode
- Bose sound system w/Acousticmass-inc: anti-theft-coded AM/FM stereo/weather band radio & auto reverse cassette player, auto speed-dependent volume adjustment, 6-speakers
- Burl hardwood interior trim on doors, dash, console, shiftgate - Cruise control
- Dual illuminated visor vanity mirrors- Heated front seats- Heated rear window
- Integrated portable cellular telephone
- Leather trim on door inserts/dash/console/roll bar/inside hardtop
- Nappa leather seats, head restraints- Pwr AM/FM/cellular antenna- Pwr door locks
- Pwr tilt/telescoping steering column
- Pwr windows w/express-down control for each window & 1-touch up/down for both windows via soft-top switch
- Rearview mirror w/auto-dimming feature- Remote illuminated entry
- Remote infrared locking system-inc: doors, trunk release, 4 inside storage compartments, window closing
- Trunk mounted 6-disc compact disc changer- Universal integrated garage door opener
- Velour carpeting & floor mats

Mechanical

- 17" X 8.25" aluminum-alloy wheels- 21.1 gallon fuel tank
 - 4-wheel ventilated pwr disc brakes w/electronic brake force distribution
 - 5-speed electronically controlled automatic transmission-inc: "winter" mode, adaptive controls, OD
 - 6.0L DOHC SMFI 48-valve aluminum-alloy V12 engine
 - Adaptive damping system w/vehicle height adjust- Anti-lock brake system (ABS)
 - Automatic slip control (ASR)
 - Brake assist system (applies full braking pwr automatically when needed)
 - Electronic Stability Program (ESP)
 - Front/rear coil springs, stabilizer bar, gas shock absorbers
 - Fully electronic ignition system w/knock sensor timing control
 - Independent five-link rear suspension w/anti-lift/anti-squat geometry/ alignment control
 - Independent front suspension w/damper struts, triangular lower control arms w/anti-dive geometry
 - P245/45WR17 performance SBR tires- Pwr recirculating-ball steering w/damper
 - Rear wheel drive- Variable intake valve timing
-

Arizona Classic Car Sales

arizonaclassiccarsales.com

602-513-3298

2010 W. Parkside Ln. #118

Phoenix, AZ 85027

© 2022 AutoRevo - All rights reserved. - Powered by AutoRevo