

2021 Toyota RAV4 Hybrid Limited

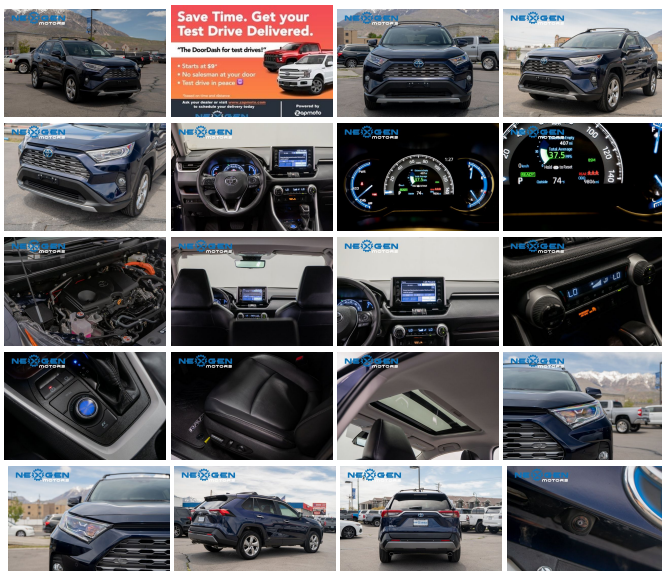
View this car on our website at nexusmotorsutah.com/7091173/ebrochure



Our Price **\$36,000**

Specifications:

Year:	2021
VIN:	4T3D6RFV3MU010806
Make:	Toyota
Stock:	B0806P
Model/Trim:	RAV4 Hybrid Limited
Condition:	Pre-Owned
Body:	SUV
Exterior:	Blue Print
Engine:	Engine: 2.5L 4-Cylinder Atkinson Cycle
Interior:	Black
Mileage:	9,804
Drivetrain:	All Wheel Drive
Economy:	City 41 / Highway 38



2021 Toyota RAV4 Hybrid Limited
Nexgen Motors - 801-874-3747 - View this car on our website at nexusmotorsutah.com/7091173/ebrochure

Our Location :



2021 Toyota RAV4 Hybrid Limited

Nexgen Motors - 801-874-3747 - View this car on our website at nexgenmotorsutah.com/7091173/ebrochure

Installed Options

Interior

- Heated Front Seats -inc: 8-way power driver w/2-position memory and lumbar support, and 4-way adjustable passenger seats
- 8-Way Driver Seat- 4-Way Passenger Seat
- 60-40 Folding Split-Bench Front Facing Manual Reclining Fold Forward Seatback Rear Seat
- Manual Tilt/Telescoping Steering Column
- Gauges -inc: Speedometer, Odometer, Engine Coolant Temp, Power/Regen, Trip Odometer and Trip Computer
- Power Rear Windows and Fixed 3rd Row Windows- Leather/Metal-Look Steering Wheel
- Front Cupholder- Rear Cupholder
- Remote Keyless Entry w/Integrated Key Transmitter, Illuminated Entry, Illuminated Ignition Switch and Panic Button
- Proximity Key For Doors And Push Button Start
- Remote Releases -Inc: Power Cargo Access and Mechanical Fuel
- HomeLink Garage Door Transmitter- Cruise Control w/Steering Wheel Controls
- Distance Pacing w/Traffic Stop-Go- Dual Zone Front Automatic Air Conditioning
- HVAC -inc: Underseat Ducts and Console Ducts - Glove Box- Driver Foot Rest
- Full Cloth Headliner- Leatherette Door Trim Insert
- Leather/Aluminum Gear Shifter Material
- Interior Trim -inc: Metal-Look Instrument Panel Insert and Metal-Look Interior Accents
- SofTex Seat Trim- Day-Night Auto-Dimming Rearview Mirror
- Driver And Passenger Visor Vanity Mirrors w/Driver And Passenger Illumination, Driver And Passenger Auxiliary Mirror
- Full Floor Console w/Covered Storage, Mini Overhead Console w/Storage and 2 12V DC Power Outlets
- Front Map Lights- Fade-To-Off Interior Lighting- Full Carpet Floor Covering
- Carpet Floor Trim- Cargo Area Concealed Storage- Roll-Up Cargo Cover
- Trunk/Hatch Auto-Latch- Cargo Space Lights- FOB Controls -inc: Cargo Access
- Safety Connect with 1-year trial Tracker System
- Instrument Panel Bin, Driver And Passenger Door Bins

- Power 1st Row Windows w/Front And Rear 1-Touch Up/Down - Delayed Accessory Power
- Power Door Locks w/Autolock Feature- Systems Monitor- Trip Computer
- Outside Temp Gauge- Redundant Digital Speedometer- Digital/Analog Appearance
- Manual Adjustable Front Head Restraints and Manual Adjustable Rear Head Restraints
- Front Center Armrest and Rear Center Armrest- 1 Seatback Storage Pocket
- Seats w/Leatherette Back Material- Engine Immobilizer- Perimeter Alarm
- 2 12V DC Power Outlets- Air Filtration

Exterior

- Aluminum Spare Wheel- Compact Spare Tire Mounted Inside Under Cargo
- Clearcoat Paint
- Express Open/Close Sliding And Tilting Glass 1st Row Sunroof w/Sunshade
- Body-Colored Front Bumper w/Black Rub Strip/Fascia Accent and Metal-Look Bumper Insert
- Black Rear Bumper w/Metal-Look Rub Strip/Fascia Accent
- Black Bodyside Cladding and Black Wheel Well Trim
- Chrome Side Windows Trim and Black Front Windshield Trim - Chrome Door Handles
- Body-Colored Power Heated Side Mirrors w/Manual Folding and Turn Signal Indicator
- Fixed Rear Window w/Fixed Interval Wiper and Defroster - Deep Tinted Glass
- Variable Intermittent Wipers- Galvanized Steel/Aluminum Panels- Lip Spoiler
- Black Grille w/Body-Color Surround- Power Liftgate Rear Cargo Access
- Tailgate/Rear Door Lock Included w/Power Door Locks - Roof Rack Rails Only
- LED Brakelights- Headlights-Automatic Highbeams- Front Fog Lamps
- Perimeter/Approach Lights
- Auto On/Off Projector Beam Led Low/High Beam Daytime Running Auto High-Beam Headlamps w/Delay-Off
- Laminated Glass- Tires: 225/60R18 AS
- Wheels: 18" x 7.0J Chrome-Finished Aluminum Alloy

Safety

- Heated Front Seats -inc: 8-way power driver w/2-position memory and lumbar support, and 4-way adjustable passenger seats
- 8-Way Driver Seat- 4-Way Passenger Seat
- 60-40 Folding Split-Bench Front Facing Manual Reclining Fold Forward Seatback Rear Seat
- Manual Tilt/Telescoping Steering Column
- Gauges -inc: Speedometer, Odometer, Engine Coolant Temp, Power/Regen, Trip Odometer and Trip Computer
- Power Rear Windows and Fixed 3rd Row Windows- Leather/Metal-Look Steering Wheel
- Front Cupholder- Rear Cupholder
- Remote Keyless Entry w/Integrated Key Transmitter, Illuminated Entry, Illuminated Ignition Switch and Panic Button
- Proximity Key For Doors And Push Button Start
- Remote Releases -Inc: Power Cargo Access and Mechanical Fuel
- HomeLink Garage Door Transmitter- Cruise Control w/Steering Wheel Controls
- Distance Pacing w/Traffic Stop-Go- Dual Zone Front Automatic Air Conditioning
- HVAC -inc: Underseat Ducts and Console Ducts - Glove Box- Driver Foot Rest
- Full Cloth Headliner- Leatherette Door Trim Insert
- Leather/Aluminum Gear Shifter Material
- Interior Trim -inc: Metal-Look Instrument Panel Insert and Metal-Look Interior Accents
- SofTex Seat Trim- Day-Night Auto-Dimming Rearview Mirror
- Driver And Passenger Visor Vanity Mirrors w/Driver And Passenger Illumination, Driver And Passenger Auxiliary Mirror
- Full Floor Console w/Covered Storage, Mini Overhead Console w/Storage and 2 12V DC Power Outlets
- Front Map Lights- Fade-To-Off Interior Lighting- Full Carpet Floor Covering
- Carpet Floor Trim- Cargo Area Concealed Storage- Roll-Up Cargo Cover
- Trunk/Hatch Auto-Latch- Cargo Space Lights- FOB Controls -inc: Cargo Access
- Safety Connect with 1-year trial Tracker System
- Instrument Panel Bin, Driver And Passenger Door Bins
- Power 1st Row Windows w/Front And Rear 1-Touch Up/Down - Delayed Accessory Power
- Power Door Locks w/Autolock Feature- Systems Monitor- Trip Computer
- Outside Temp Gauge- Redundant Digital Speedometer- Digital/Analog Appearance
- Manual Adjustable Front Head Restraints and Manual Adjustable Rear Head Restraints
- Front Center Armrest and Rear Center Armrest- 1 Seatback Storage Pocket
- Seats w/Leatherette Back Material- Engine Immobilizer- Perimeter Alarm
- 2 12V DC Power Outlets- Air Filtration

Mechanical

- Lithium Ion Traction Battery- Brake Actuated Limited Slip Differential
- Regenerative 4-Wheel Disc Brakes w/4-Wheel ABS, Front Vented Discs, Brake Assist, Hill

Hold Control and Electric Parking Brake

- Double Wishbone Rear Suspension w/Coil Springs
- Strut Front Suspension w/Coil Springs- Permanent Locking Hubs
- Quasi-Dual Stainless Steel Exhaust w/Chrome Tailpipe Finisher- 14.5 Gal. Fuel Tank
- Electric Power-Assist Speed-Sensing Steering- Front And Rear Anti-Roll Bars
- Gas-Pressurized Shock Absorbers- 1140# Maximum Payload
- Towing Equipment -inc: Trailer Sway Control- Hybrid Electric Motor
- 550CCA Maintenance-Free Battery w/Run Down Protection
- Automatic Full-Time All-Wheel
- Transmission w/Driver Selectable Mode and Sequential Shift Control
- Engine Auto Stop-Start Feature- GVWR: 4,920 lbs- Axle Ratio: TBD
- Transmission: ECVT (Continuously Variable)- Engine: 2.5L 4-Cylinder Atkinson Cycle

Nexgen Motors

nexgenmotorsutah.com

801-874-3747

986 N State St.

Orem, UT 84057

© 2023 AutoRevo - All rights reserved. - Powered by AutoRevo