

# 2022 Jeep Wrangler Unlimited Rubicon 4X4 DUPONT KEVLAR,LIFTED,BUMPER'S

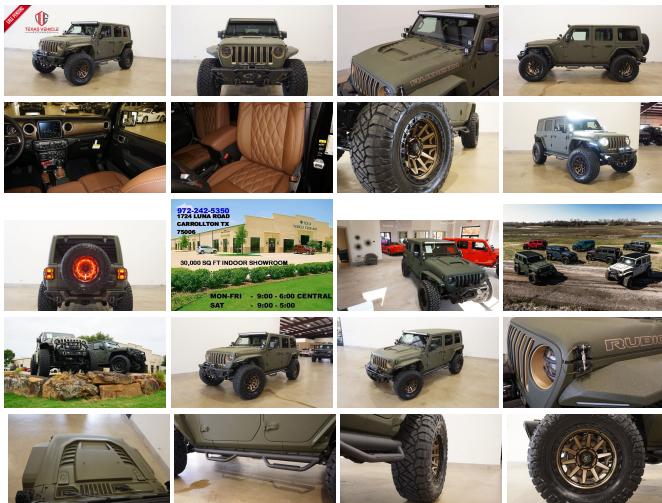
View this car on our website at [tveauto.com/7090648/ebrochure](https://tveauto.com/7090648/ebrochure)



Our Price **\$90,900**

## Specifications:

<b>Year:</b>	2022
<b>VIN:</b>	1C4HJXFG8NW100705
<b>Make:</b>	Jeep
<b>Stock:</b>	100705
<b>Model/Trim:</b>	Wrangler Unlimited Rubicon 4X4 DUPONT KEVLAR,LIFTED,BUMPER'S
<b>Condition:</b>	Pre-Owned
<b>Body:</b>	SUV
<b>Exterior:</b>	Green
<b>Engine:</b>	ENGINE: 3.6L V6 24V VVT ETORQUE UPG I
<b>Interior:</b>	Brown Leather
<b>Transmission:</b>	TRANSMISSION: 8-SPEED AUTOMATIC (850RE)
<b>Mileage:</b>	57
<b>Drivetrain:</b>	4 Wheel Drive
<b>Economy:</b>	City 17 / Highway 23



NATION WIDE FINANCING

SUBMIT CREDIT APP [WWW.TVEAUTO.COM](https://www.tveauto.com)

OR CALL 972-242-5350

**"TANK GREEN EDITION"**

CUSTOM BUILT **KEVLAR** 2022 JEEP  
WRANGLER JL UNLIMITED RUBICON 4X4  
WITH 25R PACKAGE

**UPGRADES INCLUDE:**

- \* TANK GREEN KEVLAR COATING WITH KING RANCH BROWN ACCENTS
- \* CUSTOM ALEA BROWN LEATHER WITH TAN STITCHING
- \* FACTORY REMOTE START
- \* REMOTE PROXIMITY KEYLESS ENTRY
- \* COLD WEATHER GROUP
- \* SAFETY GROUP
- \* FACTORY 8.4 INCH TOUCH SCREEN NAVIGATION WITH HD AM/FM/SIRIUS STEREO & ALPINE PREMIUM AUDIO SYSTEM
- \* FACTORY BACK-UP CAMERA
- \* U-CONNECT
- \* SMITTYBILT APOLLO JL FRONT BUMPER WITH 2 MINI LED LIGHT BARS & LED FOGLIGHTS
- \* FRONT D-RINGS & ISOLATORS (KING RANCH BROWN)
- \* SMITTYBILT NEW GEN II "X20" 10,000 LB WATERPROOF AND WIRELESS CONTROL WINCH WITH SYNTHETIC ROPE
- \* FACTOR 55 PROLINK (BLACK)
- \* FACTORY MESH GRILLE PAINTED (KING RANCH BROWN)
- \* FACTORY LED HEADLIGHTS
- \* RUGGED RIDGE BLACK HEADLIGHT GUARDS
- \* NEW JL CUSTOM VENTED HOOD
- \* DRAKE OFF ROAD HOOD LATCHES
- \* ROAD ARMOR STEALTH JL FENDER FLARES
- \* DV8 OFF ROAD FRONT & REAR INNER FENDERS
- \* RUBICON EXPRESS 2.5" LIFT KIT WITH TERAFLEX FALCON SHOCKS

TERAFLEX FALCON SHOCKS

\* TERAFLEX FALCON STABILIZER KIT

\* SUSPENSION PARTS PAINTED (KING RANCH BROWN)

\* VOSWITCH 6 CHANNEL CUSTOM INTEGRATED SWITCH PANEL

\* 50" LED LIGHT BAR AND 4 RIGID INDUSTRIES DUALLY D2 LED PILLAR LIGHTS

\* SMITTYBILT BLACK TUBULAR STEPS

\* EVOLUTION 2 BLACK LED TAIL LIGHTS

\* RUGGED RIDGE BLACK TAIL LIGHT GUARDS

\* RUGGED RIDGE SPARTACUS HD HINGE KIT

\* RUGGED RIDGE LED THIRD BRAKE LIGHT RING

\* SMITTYBILT APOLLO JL REAR BUMPER WITH REAR PARK DISTANCE SENSORS

\* REAR D-RINGS & ISOLATORS (KING RANCH BROWN)

\* MAGNAFLOW BLACK SERIES EXHAUST SYSTEM

\* ALL WEATHER FLOOR MATS

\* TAZER JL PROGRAMMER WITH SPEEDOMETER CALIBRATION

\* 20" FUEL BRONZE W/BLACK LIP "COVERT" WHEELS

\* BRAND NEW NITTO RIDGE GRAPPLER 37X13.50R/20 TIRES

**WE BUILD EVERY JEEP WITH PRIDE! DO NOT HESITATE TO CALL US WITH THIS JEEP BUILD. WE CAN MAKE CHANGES TO THIS JEEP BUILD OR CUSTOM BUILD ANY JEEP TO YOUR PREFERENCE. GIVE US A CALL @ 972-242-5350 OR STOP BY FOR A TEST DRIVE 1724 HUNA RD IN**

TEST DRIVE. 1/24 LEAD IN  
CARROLLTON - 2 MILES NORTH OF 635.

2022 Jeep Wrangler Unlimited Rubicon 4X4 DUPONT KEVLAR,LIFTED,BUMPER'S  
Texas Vehicle Exchange - 972-242-5350 - View this car on our website at [veauto.com/7090648/ebrochure](http://veauto.com/7090648/ebrochure)

### Vehicle History Report : as Of 01/28/2023

**CARFAX**

Snapshot

**2022 JEEP WRANGLER UNLIMITED RUBICON**



No accidents or damage reported to CARFAX



Regular oil changes



2 Previous owners



Personal vehicle



Last owned in Texas



9,937 Last reported odometer reading



**FREE CARFAX Report**

See the full CARFAX Report for additional information

\*carfax Snapshot is a reflection of available information on the date the report was pulled. carfax is constantly being updated with new information and is subject to change at any time.

### Our Location :



2022 Jeep Wrangler Unlimited Rubicon 4X4 DUPONT KEVLAR,LIFTED,BUMPER'S  
Texas Vehicle Exchange - 972-242-5350 - View this car on our website at [veauto.com/7090648/ebrochure](http://veauto.com/7090648/ebrochure)

### Installed Options

#### Interior

- 2 12V DC Power Outlets- 2 12V DC Power Outlets and 1 120V AC Power Outlet
- 2 Seatback Storage Pockets
- 4-Way Passenger Seat -inc: Manual Recline and Fore/Aft Movement
- 4G LTE Wi-Fi Hot Spot Mobile Hotspot Internet Access
- 6-Way Driver Seat -inc: Manual Recline, Height Adjustment, Fore/Aft Movement and Manual Lumbar Support
- 60-40 Folding Split-Bench Front Facing Fold Forward Seatback Premium Cloth Rear Seat
- Air Filtration- Analog Appearance- Cargo Space Lights
- Carpet Floor Trim, Carpet And Rubber Mat- Compass
- Cruise Control w/Steering Wheel Controls- Day-Night Auto-Dimming Rearview Mirror
- Delayed Accessory Power

- Driver And Passenger Visor Vanity Mirrors w/Driver And Passenger Illumination
- Fade-To-Off Interior Lighting- Front And Rear Map Lights
- Front Center Armrest w/Storage
- Front Seats w/Cloth Back Material and Manual Driver Lumbar
- Full Carpet Floor Covering -inc: Carpet Front And Rear Floor Mats
- Full Floor Console w/Locking Storage, 2 12V DC Power Outlets and 1 120V AC Power Outlet
- Garage Door Transmitter
- Gauges -inc: Speedometer, Odometer, Voltmeter, Oil Pressure, Engine Coolant Temp, Tachometer, Inclinator, Altimeter, Oil Temperature, Transmission Fluid Temp, Engine Hour Meter, Trip Odometer and Trip Computer
- HVAC -inc: Console Ducts- Illuminated Front Cupholder- Illuminated Rear Cupholder
- Instrument Panel Bin, Dashboard Storage, Driver / Passenger And Rear Door Bins
- Interior Trim -inc: Colored Instrument Panel Insert, Metal-Look Door Panel Insert, Metal-Look Console Insert and Metal-Look Interior Accents
- Leather Steering Wheel- Locking Cargo Area Concealed Storage- Locking Glove Box
- Manual Adjustable Front Head Restraints and Foldable Rear Head Restraints
- Manual Tilt/Telescoping Steering Column- Outside Temp Gauge- Perimeter Alarm
- Power 1st Row Windows w/Driver And Passenger 1-Touch Down
- Power Door Locks w/Autolock Feature
- Power Rear Windows and Removable 3rd Row Windows
- Premium Cloth Low-Back Bucket Seats- Proximity Key For Doors And Push Button Start
- Redundant Digital Speedometer
- Remote Keyless Entry w/Integrated Key Transmitter, Illuminated Entry and Panic Button
- Sentry Key Engine Immobilizer- SiriusXM Guardian Tracker System
- Smart Device Integration- Systems Monitor- Trip Computer
- Urethane Gear Shifter Material
- Voice Activated Dual Zone Front Automatic Air Conditioning

---

## Exterior

- Aluminum Spare Wheel
- Auto On/Off Aero-Composite Halogen Daytime Running Headlamps w/Delay-Off
- Black Door Handles- Black Front Bumper w/2 Tow Hooks
- Black Power Heated Side Mirrors w/Manual Folding- Black Rear Bumper w/1 Tow Hook
- Black Side Windows Trim- Black Wheel Well Trim and Black Fender Flares
- Body-Color Grille w/Colored Accents- Clearcoat Paint w/Badging
- Conventional Rear Cargo Access- Deep Tinted Glass- Front Fog Lamps
- Full-Size Spare Tire Mounted Outside Rear
- Galvanized Steel/Aluminum/Magnesium Panels
- Manual Convertible Top w/Fixed Roll-Over Protection
- Non-Lock Fuel Cap w/o Discriminator- Removable Rear Window
- Tailgate/Rear Door Lock Included w/Power Door Locks
- Tires: LT285/70R17C BSW Off-Road- Variable Intermittent Wipers
- Wheels: 17" x 7.5" Machined w/Black Pockets

---

## Safety

- 2 12V DC Power Outlets- 2 12V DC Power Outlets and 1 120V AC Power Outlet
- 2 Seatback Storage Pockets
- 4-Way Passenger Seat -inc: Manual Recline and Fore/Aft Movement
- 4G LTE Wi-Fi Hot Spot Mobile Hotspot Internet Access
- 6-Way Driver Seat -inc: Manual Recline, Height Adjustment, Fore/Aft Movement and Manual Lumbar Support
- 60-40 Folding Split-Bench Front Facing Fold Forward Seatback Premium Cloth Rear Seat
- Air Filtration- Analog Appearance- Cargo Space Lights
- Carpet Floor Trim, Carpet And Rubber Mat- Compass
- Cruise Control w/Steering Wheel Controls- Day-Night Auto-Dimming Rearview Mirror
- Delayed Accessory Power
- Driver And Passenger Visor Vanity Mirrors w/Driver And Passenger Illumination
- Fade-To-Off Interior Lighting- Front And Rear Map Lights
- Front Center Armrest w/Storage
- Front Seats w/Cloth Back Material and Manual Driver Lumbar
- Full Carpet Floor Covering -inc: Carpet Front And Rear Floor Mats
- Full Floor Console w/Locking Storage, 2 12V DC Power Outlets and 1 120V AC Power Outlet
- Garage Door Transmitter
- Gauges -inc: Speedometer, Odometer, Voltmeter, Oil Pressure, Engine Coolant Temp, Tachometer, Inclinator, Altimeter, Oil Temperature, Transmission Fluid Temp, Engine Hour Meter, Trip Odometer and Trip Computer
- HVAC -inc: Console Ducts- Illuminated Front Cupholder- Illuminated Rear Cupholder
- Instrument Panel Bin, Dashboard Storage, Driver / Passenger And Rear Door Bins
- Interior Trim -inc: Colored Instrument Panel Insert, Metal-Look Door Panel Insert, Metal-Look Console Insert and Metal-Look Interior Accents

- Leather Steering Wheel- Locking Cargo Area Concealed Storage- Locking Glove Box
- Manual Adjustable Front Head Restraints and Foldable Rear Head Restraints
- Manual Tilt/Telescoping Steering Column- Outside Temp Gauge- Perimeter Alarm
- Power 1st Row Windows w/Driver And Passenger 1-Touch Down
- Power Door Locks w/Autolock Feature
- Power Rear Windows and Removable 3rd Row Windows
- Premium Cloth Low-Back Bucket Seats- Proximity Key For Doors And Push Button Start
- Redundant Digital Speedometer
- Remote Keyless Entry w/Integrated Key Transmitter, Illuminated Entry and Panic Button
- Sentry Key Engine Immobilizer- SiriusXM Guardian Tracker System
- Smart Device Integration- Systems Monitor- Trip Computer
- Urethane Gear Shifter Material
- Voice Activated Dual Zone Front Automatic Air Conditioning

## Mechanical

- 1351# Maximum Payload- 21.5 Gal. Fuel Tank- 220 Amp Alternator
- 4-Wheel Disc Brakes w/4-Wheel ABS, Front Vented Discs, Brake Assist and Hill Hold Control
- 4.10 Rear Axle Ratio- 5 Skid Plates- 50 State Emissions
- 650CCA Maintenance-Free Battery w/Run Down Protection- Auto Locking Hubs
- Aux Battery- Brake Actuated Limited Slip Differential
- Driver Selectable Front Locking Differential- Driver Selectable Rear Locking Differential
- Electro-Hydraulic Power Assist Steering- Engine Oil Cooler
- Engine: 3.6L V6 24V VVT UPG I w/ESS
- Front Active w/Driver Control Anti-Roll Bar and Rear Anti-Roll Bar- GVWR: 5,800 lbs
- HD Shock Absorbers- Leading Link Front Suspension w/Coil Springs
- Manual Transfer Case- Part-Time Four-Wheel Drive- Performance Suspension
- Single Stainless Steel Exhaust- Stop-Start Dual Battery System
- Towing Equipment -inc: Trailer Sway Control
- Trailing Arm Rear Suspension w/Coil Springs- Transmission: 6-Speed Manual

## Option Packages

### Factory Installed Packages

#### ENGINE: 3.6L V6 24V VVT ETORQUE UPG I

-inc: 600 Amp Maintenance Free Battery, 48V Belt Starter Generator, Delete Alternator **\$1,250**

#### TRANSMISSION: 8-SPEED AUTOMATIC (850RE)

-inc: Tip Start, Selec-Speed Control **\$2,500**

#### BLACK 3-PIECE HARD TOP

-inc: Freedom Panel Storage Bag, Rear Window Defroster, Rear Window Wiper/Washer, No Soft Top **\$1,695**

#### COLD WEATHER GROUP

-inc: Heated Steering Wheel, Heated Front Seats **\$1,145**

#### SAFETY GROUP

-inc: ParkSense Rear Park Assist System, Blind Spot & Cross Path Detection **\$1,095**

#### QUICK ORDER PACKAGE 25R

-inc: Engine: 3.6L V6 24V VVT  
eTorque UPG I, Transmission:  
8-Speed Automatic (850RE)

Option Packages Total

**\$7,685**

Texas Vehicle Exchange

[tveauto.com](https://tveauto.com)

972-242-5350

1724 Luna Road

Carrollton, TX 75006

© 2023 AutoRevo - All rights reserved. - Powered by AutoRevo