



2010 Dodge Grand Caravan SXT

Our Price \$10,950

View this vehicle on our website at importsandmore.net



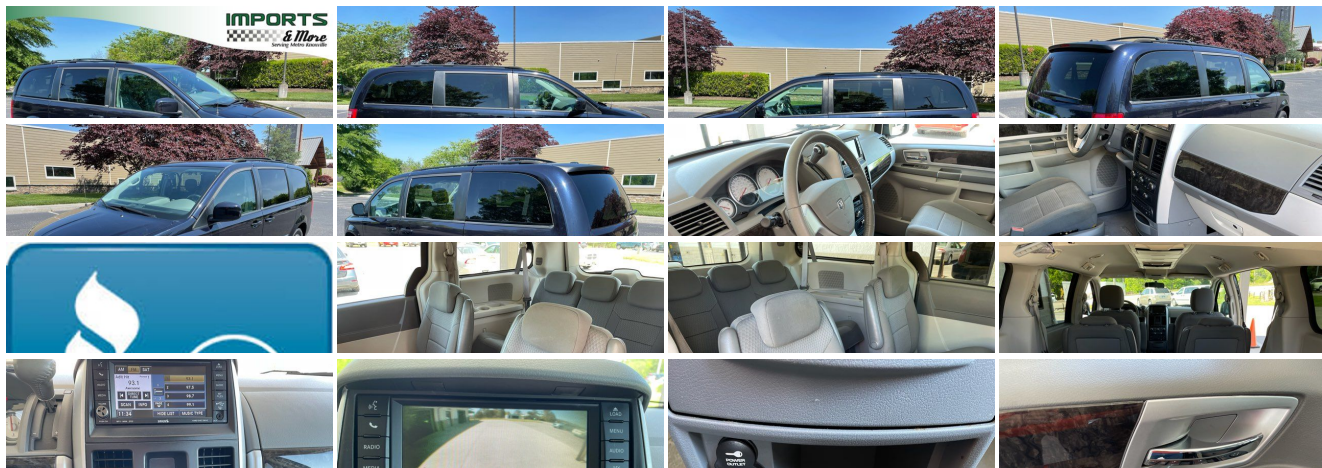
(865) 988-4133

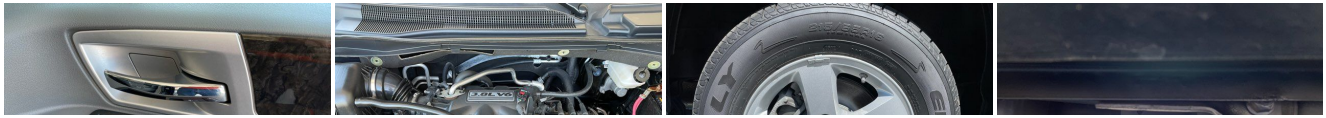
10504 Highway 11 E, Lenoir City, TN 37772

Photos

Details

Contact





Specifications:

Year:	2010
VIN:	2D4RN5D16AR143537
Make:	Dodge
Model/Trim:	Grand Caravan SXT
Condition:	Pre-Owned
Body:	Minivan/Van
Exterior:	Deep Water Blue Pearl
Engine:	3.8L OHV V6 ENGINE
Interior:	Gray Cloth
Transmission:	AUTOMATIC TRANSMISSION W/OD
Mileage:	78,060
Drivetrain:	Front Wheel Drive
Economy:	City 16 / Highway 23

Vehicle Description

Yes, a 78000-mile 2010 Grand Caravan SXT under \$11000 with No Dealer Doc Fees! 3.8L V6, AUTO, Dual AC, all power, CD/AUX STEREO, POWER DOORS, NICE Interior! Loaded, Stow n Go Seats, Cruise, Good tires and Excellent brakes, Drives Great! Carfax/Autocheck Certified! ASE inspection and road test, Fresh, nice looking Van, Come see and drive this one! Serving you since 1998, A+ member of Better Business Bureau!

Installed Options

Interior

- 115V aux pwr outlet- 12V DC front & rear pwr outlets- 12V aux pwr outlet
- 2nd row fold-in-floor bucket seats- 2nd row pwr windows
- 3rd row Stow'n Go tailgate seats - 8-way pwr driver seat
- Air conditioning w/3-zone temp control - Easy clean floor mats
- Front cloth low-back bucket seats - Keyless entry w/immobilizer
- Pwr rear quarter vented windows- Assist handles- Blackwood door trim panel
- Body-color sill applique- Carpet flooring- Cupholders w/overhead illumination
- Door courtesy lamps- Driver door sill storage bin- Driver manual lumbar adjust
- Dual glove boxes- Dual sun visors w/illuminated mirrors - Floor console w/cupholder
- Illuminated entry- Illuminated front door storage
- Instrument panel w/blackwood & satin silver bezel- LH rear quarter storage bin
- Leather-wrapped shift knob- Leather-wrapped steering wheel- Liftgate flood lamp
- Lower instrument panel cubby bin- Observation mirror
- Overhead ambient surround lighting- Overhead console- Overhead storage bins
- Pwr adjustable pedals- Pwr locks
- Pwr windows w/front 1-touch feature -inc: 2nd row pwr windows, pwr quarter vented windows
- Rear air conditioning w/heater- Rear overhead console system
- Rear seatback grocery bag hooks- Rear window defroster- Speed control
- Stain repel seat fabric- Steering wheel mounted audio controls
- Swiveling rear courtesy/reading lamps- Tilt steering wheel- Tip start
- Trip computer w/temp, compass- Universal garage door opener
- White face instrument cluster w/tachometer

Exterior

- Black side rails w/crossbars- Compact spare tire- Headlamp time-delay off
- P225/65R16 all-season BSW tires- Right pwr sliding door
- Variable intermittent windshield wipers- 16" x 6.5" aluminum wheels - Belt moldings
- Black/bright grille- Body-color door handles- Body-color fascias- Body-color mirrors
- Bright bodyside moldings- Bright license plate brow- Fog lamps
- Fold-away heated pwr mirrors- Front air dam- Halogen headlamps
- Left pwr sliding door- Rear scuff pad- Rear window wiper/washer- Sunscreen glass
- Yokohama tires

Safety

- 115V aux pwr outlet- 12V DC front & rear pwr outlets- 12V aux pwr outlet
- 2nd row fold-in-floor bucket seats- 2nd row pwr windows
- 3rd row Stow'n Go tailgate seats - 8-way pwr driver seat
- Air conditioning w/3-zone temp control - Easy clean floor mats
- Front cloth low-back bucket seats - Keyless entry w/immobilizer
- Pwr rear quarter vented windows- Assist handles- Blackwood door trim panel
- Body-color sill applique- Carpet flooring- Cupholders w/overhead illumination
- Door courtesy lamps- Driver door sill storage bin- Driver manual lumbar adjust
- Dual glove boxes- Dual sun visors w/illuminated mirrors - Floor console w/cupholder
- Illuminated entry- Illuminated front door storage
- Instrument panel w/blackwood & satin silver bezel- LH rear quarter storage bin
- Leather-wrapped shift knob- Leather-wrapped steering wheel- Liftgate flood lamp
- Lower instrument panel cubby bin- Observation mirror
- Overhead ambient surround lighting- Overhead console- Overhead storage bins
- Pwr adjustable pedals- Pwr locks
- Pwr windows w/front 1-touch feature -inc: 2nd row pwr windows, pwr quarter vented windows
- Rear air conditioning w/heater- Rear overhead console system
- Rear seatback grocery bag hooks- Rear window defroster- Speed control
- Stain repel seat fabric- Steering wheel mounted audio controls
- Swiveling rear courtesy/reading lamps- Tilt steering wheel- Tip start
- Trip computer w/temp, compass- Universal garage door opener
- White face instrument cluster w/tachometer

Mechanical

- 160-amp alternator- 3.8L OHV V6 engine (REQ: NAS Emissions) - 4-wheel disc brakes
- 6-speed automatic transmission w/OD- 600-amp maintenance-free battery
- Front wheel drive- Pwr rack & pinion steering

Option Packages

Factory Installed Packages

3.8L OHV V6 ENGINE

6-SPEED AUTOMATIC TRANSMISSION W/OD

DEEP WATER BLUE PEARL

DARK SLATE GRAY SEATS

Imports and More Inc

Imports and More Inc

View this car on our website at importsandmore.net/7090268

Website: importsandmore.net

Phone: (865) 988-4133

Map: [10504 Highway 11 E, Lenoir City, TN 37772](#)

