



## 2019 Chevrolet Camaro ZL1

**Website Price \$69,995**

View this vehicle on our website at [autoparkdallas.com](http://autoparkdallas.com)



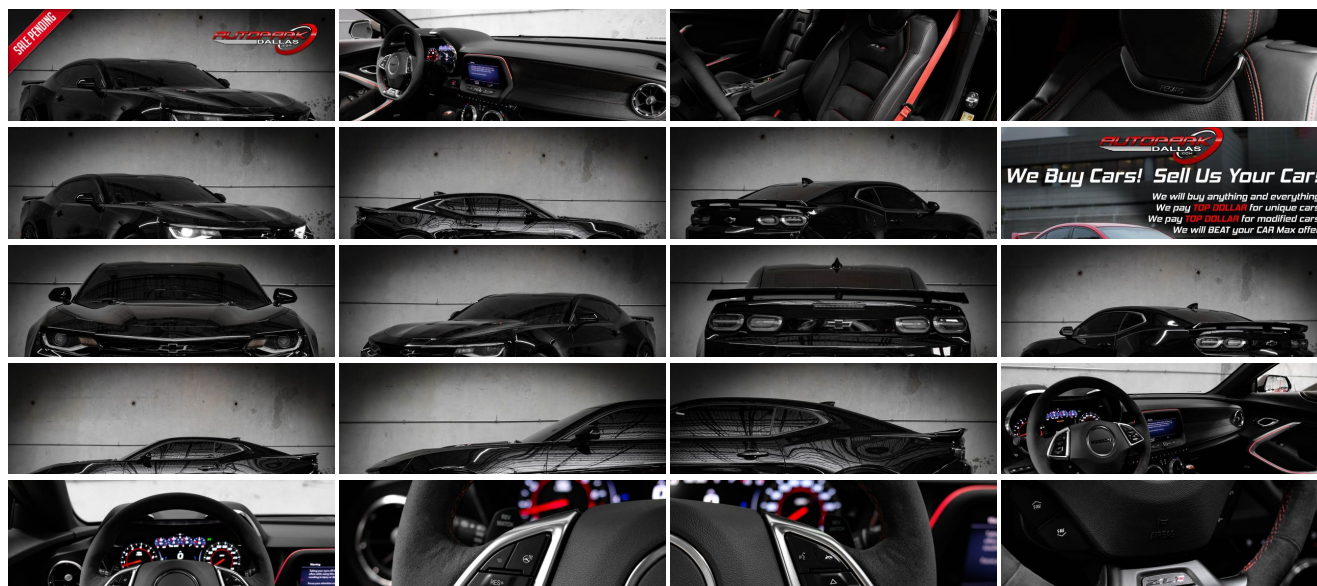
(214) 945-2601

2061 S Stemmons Fwy , Lewisville, TX 75067

Photos

Details

Contact



## Specifications:

<b>Year:</b>	2019
<b>VIN:</b>	1G1FJ1R69K0157025
<b>Make:</b>	Chevrolet
<b>Model/Trim:</b>	Camaro ZL1
<b>Condition:</b>	Pre-Owned
<b>Body:</b>	Coupe
<b>Exterior:</b>	Black
<b>Engine:</b>	ENGINE, 6.2L SUPERCHARGED V8 DI, VVT
<b>Interior:</b>	Black Leather
<b>Mileage:</b>	11,690
<b>Drivetrain:</b>	Rear Wheel Drive
<b>Economy:</b>	City 13 / Highway 20

## Vehicle Description

### Installed Options

#### Interior

- Door locks, power programmable with lockout protection- Floor mats, carpeted front
- Keyless Open and Start includes 2 remote transmitters that enable automatic door unlock and open by touching door switch
- Mirror, inside rearview auto-dimming, frameless (Included and only available with (A1Y/A1Z) 1LE Track Performance Package.)
- Seat adjuster, driver, 8-way power- Seat, rear, folding
- Seats, Leather-trimmed with sueded inserts front bucket, RECARO performance
- Seats, heated driver and front passenger - Seats, ventilated driver and front passenger
- Air conditioning, dual-zone automatic climate control with individual climate settings for driver and dedicated passenger controls and outside temperature display
- Compass display
- Cruise control, electronic with set and resume speed, steering wheel mounted
- Cup holders, 2 front- Dead pedal, driver- Defogger, rear-window, electric
- Driver Information Center, enhanced, 8" diagonal multi-color re-configurable display
- Glovebox, lockable
- Head-Up Display with color digital readouts for vehicle speed, selected gear, G-Force, audio system information, high-beam indicator, compass, outside air temperature, tachometer, vehicle messages, Turn-by-Turn information and phone information
- Interior trim, aluminum accents on door trim and shifter cap
- Lighting, front reading lamps- Lighting, interior spectrum, 24 different color selections
- Pedals, sporty alloy- Power outlet, 1 located on center console
- Rear Camera Mirror (Deleted when (A1Y/A1Z) 1LE Track Performance Package is ordered.)
- Seat adjuster, front passenger, 6-way power- Shift knob, sueded microfiber-wrapped
- Sill plates, illuminated- Speedometer, miles/kilometers
- Steering column, manual rake and telescopic
- Steering wheel, 3-spoke, sueded microfiber-wrapped, flat-bottom
- Steering wheel, heated- Theft-deterrent system, electrical, unauthorized entry
- Trunk release, power
- Visors, driver and front passenger vanity mirrors, covered, illuminated
- Windows, power with driver and passenger Express-Down/Up
- Wireless Charging for devices

#### Exterior

- Spoiler, rear, sport
- Tires, 285/30R20 front and 305/30R20 rear, blackwall, summer-only (Do not use summer only tires in winter conditions, as it would adversely affect vehicle safety, performance and durability. Use only GM-approved tire and wheel combinations. Unapproved combinations may change the vehicle's performance characteristics. For important tire and wheel information, go to <https://my.chevrolet.com/learnAbout/chevrolettires> or see your dealer.)
- Wheels, 20" x 10" (50.8 cm x 25.4 cm) front and 20" x 11" (50.8 cm x 27.9 cm) rear Dark Graphite premium paint, forged aluminum
- Mirrors, outside heated power-adjustable and driver-side auto-dimming, body-color

### Option Packages

#### Factory Installed Packages

---

ENGINE, 6.2L SUPERCHARGED V8 DI, VVT  
(650 hp [485 kW] @ 6400 rpm, 650 lb-ft torque  
[881N-m] @ 3600 rpm)

- Tire inflation kit- Wipers, front variable-speed, intermittent with washers

## Safety

- Door locks, power programmable with lockout protection- Floor mats, carpeted front
- Keyless Open and Start includes 2 remote transmitters that enable automatic door unlock and open by touching door switch
- Mirror, inside rearview auto-dimming, frameless (Included and only available with (A1Y/A1Z) 1LE Track Performance Package.)
- Seat adjuster, driver, 8-way power- Seat, rear, folding
- Seats, Leather-trimmed with sueded inserts front bucket, RECARO performance
- Seats, heated driver and front passenger - Seats, ventilated driver and front passenger
- Air conditioning, dual-zone automatic climate control with individual climate settings for driver and dedicated passenger controls and outside temperature display
- Compass display
- Cruise control, electronic with set and resume speed, steering wheel mounted
- Cup holders, 2 front- Dead pedal, driver- Defogger, rear-window, electric
- Driver Information Center, enhanced, 8" diagonal multi-color re-configurable display
- Glovebox, lockable
- Head-Up Display with color digital readouts for vehicle speed, selected gear, G-Force, audio system information, high-beam indicator, compass, outside air temperature, tachometer, vehicle messages, Turn-by-Turn information and phone information
- Interior trim, aluminum accents on door trim and shifter cap
- Lighting, front reading lamps- Lighting, interior spectrum, 24 different color selections
- Pedals, sporty alloy- Power outlet, 1 located on center console
- Rear Camera Mirror (Deleted when (A1Y/A1Z) 1LE Track Performance Package is ordered.)
- Seat adjuster, front passenger, 6-way power- Shift knob, sueded microfiber-wrapped
- Sill plates, illuminated- Speedometer, miles/kilometers
- Steering column, manual rake and telescopic
- Steering wheel, 3-spoke, sueded microfiber-wrapped, flat-bottom
- Steering wheel, heated- Theft-deterrent system, electrical, unauthorized entry
- Trunk release, power
- Visors, driver and front passenger vanity mirrors, covered, illuminated
- Windows, power with driver and passenger Express-Down/Up
- Wireless Charging for devices

## Mechanical

- Transmission, 6-speed manual (Includes Active Rev Matching.)
- Battery rundown protection
- Brakes, Brembo 6-piston front and 4-piston rear, performance, 4-wheel antilock, 4-wheel disc
- Cooler, engine coolant, auxiliary- Cooler, rear differential- Cooler, transmission oil
- Cooling system, extra capacity- Cooling, external engine oil cooler
- Differential, electronic limited slip (eLSD)
- Driver Selector Mode up to 4 modes available for various driving conditions - Snow/Ice, Tour, Sport and Track (SS and ZL1 models only)
- Engine, 6.2L supercharged V8 DI, VVT (650 hp [485 kW] @ 6400 rpm, 650 lb-ft torque [881N-m] @ 3600 rpm)
- Exhaust, dual-mode- Fueling system, capless- Launch control, custom
- Magnetic ride control
- Rear axle, 3.73 ratio (Included with (MN6) 6-speed manual transmission.)
- Rear wheel drive- Steering, power, variable ratio, electric- Suspension, Performance



Auto Park Dallas

View this car on our website at [autoparkdallas.com/7089541](http://autoparkdallas.com/7089541)

Website: [autoparkdallas.com](http://autoparkdallas.com)

Phone: (214) 945-2601

Map: 2061 S Stemmons Fwy, Lewisville, TX 75067

