

2022 Ford F-150 LARIAT 4X4 LIFT,NAV,360 CAM,HTD/COOL LTH,FUEL 22'S

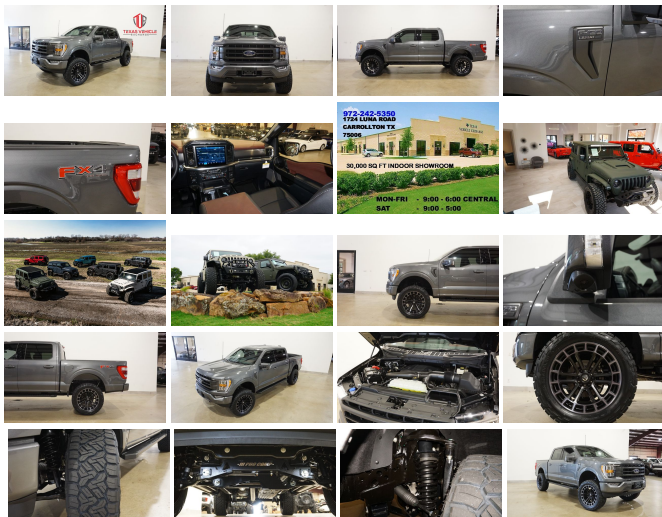
View this car on our website at tveauto.com/7089072/ebrochure



Our Price **\$72,900**

Specifications:

Year:	2022
VIN:	1FTFW1E83NKD67919
Make:	Ford
Stock:	D67919
Model/Trim:	F-150 LARIAT 4X4 LIFT,NAV,360 CAM,HTD/COOL LTH,FUEL 22'S
Condition:	Pre-Owned
Body:	Pickup Truck
Exterior:	Carbonized Gray Metallic
Engine:	ENGINE: 3.5L V6 ECOBOOST
Interior:	Black Leather
Transmission:	TRANSMISSION: ELECTRONIC 10- SPEED AUTOMATIC
Mileage:	28
Drivetrain:	4 Wheel Drive
Economy:	City 17 / Highway 23



NATION WIDE FINANCING

SUBMIT CREDIT APP [WWW.TVEAUTO.COM](https://www.tveauto.com)

OR CALL 972-242-5350

2022 FORD F150 SUPER CREW LARIAT 4X4,
3.5L V6 ECOBOOST ENGINE, ELECTRONIC
10 SPEED AUTOMATIC TRANSMISSION,
ONLY 28 MILES, CARBONIZED GRAY
METALLIC W/BLACK LEATHER INTERIOR,
CARFAX REPORTS 1 OWNER NO
ACCIDENTS, NON-SMOKER, REMOTE
START, FOGLIGHTS, PRO COMP 6"
SUSPENSION LIFT KIT, FRONT & REAR
PARK DISTANCE SENSORS, 12" TOUCH
SCREEN NAVIGATION, BACK-UP CAMERA,
CARGO CAMERA. 360 VIEW CAMERAS.

RUNNING BOARDS, POWER WINDOWS, POWER DOOR LOCKS, POWER FOLDING HEATED MIRRORS WITH TURN SIGNALS, BLIND SPOT CONTROL, TILT/TELESCOPE STEERING WHEEL WITH AUDIO & CRUISE CONTROLS, DUAL POWER HEATED & COOLED FRONT SEATS WITH DRIVER 3 MEMORY POSITION, POWER ADJUSTABLE PEDALS, TRACTION CONTROL, LANE KEEPING SYSTEM, HILL DESCENT CONTROL, TRAILER BRAKE CONTROLLER, ICE COLD A/C, DUAL CLIMATE CONTROL, BANG & OLUFSEN HD AM/FM/SIRIUS STEREO, MICROSOFT SYNC VOICE ACTIVATED SYSTEM, SELF DIMMING REAR VIEW MIRROR, HOMELINK GARAGE CONTROLS, DUAL LIGHTED VANITY MIRRORS, REAR A/C VENTS, POWER SLIDING REAR WINDOW, TAILGATE STEP, TOW PACKAGE WITH RECEIVER HITCH, RUBBER FLOOR MATS, OWNER'S MANUAL, 2 KEYS/2 REMOTES, 22" FUEL MATTE BLACK/MACHINED/DDT "HEATER" WHEELS, FRONT TIRES ARE BRAND NEW NITTO RECON GRAPPLER A/T 35X12.50R/22, REAR TIRES ARE BRAND NEW NITTO RECON GRAPPLER A/T 35X12.50R/22. RUNS AND DRIVES GREAT. GIVE US A CALL @ 972-242-5350 OR STOP BY FOR A TEST DRIVE. 1724 LUNA RD IN CARROLLTON - 2 MILES NORTH OF 635. CLICK ON CARFAX ICON TO VIEW A FULL REPORT AT NO COST TO YOU.

2022 Ford F-150 LARIAT 4X4 LIFT,NAV,360 CAM,HTD/COOL LTH,FUEL 22'S

Texas Vehicle Exchange - 972-242-5350 - View this car on our website at tveauto.com/7089072/ebrochure

Vehicle History Report : as Of 03/24/2023



Snapshot

2022 FORD F-150 LARIAT



No accidents or damage reported to CARFAX



Well maintained vehicle



At least 1 open recall



CARFAX 1-Owner vehicle



Commercial vehicle



6 Last reported odometer reading



FREE CARFAX Report

See the full CARFAX Report for additional information

*carfax Snapshot is a reflection of available information on the date the report was pulled. carfax is constantly being updated with new information and is subject to change at any time.

Our Location :



2022 Ford F-150 LARIAT 4X4 LIFT,NAV,360 CAM,HTD/COOL LTH,FUEL 22'S

Texas Vehicle Exchange - 972-242-5350 - View this car on our website at veauto.com/7089072/ebrochure

Installed Options

Interior

- 1 12V DC Power Outlet- 2 Seatback Storage Pockets
- 60-40 Folding Split-Bench Front Facing Fold-Up Cushion Rear Seat - Air Filtration
- Compass- Cruise Control w/Steering Wheel Controls
- Day-Night Auto-Dimming Rearview Mirror- Delayed Accessory Power
- Digital/Analog Appearance
- Driver And Passenger Visor Vanity Mirrors w/Driver And Passenger Illumination
- Driver Seat- Dual Zone Front Automatic Air Conditioning
- FOB Controls -inc: Cargo Access and Remote Engine Start - Fade-To-Off Interior Lighting
- FordPass Connect 4G Mobile Hotspot Internet Access- Front And Rear Map Lights
- Front Center Armrest w/Storage and Rear Center Armrest
- Full Carpet Floor Covering -inc: Carpet Front And Rear Floor Mats - Full Cloth Headliner
- Gauges -inc: Speedometer, Odometer, Voltmeter, Oil Pressure, Engine Coolant Temp, Tachometer, Transmission Fluid Temp, Trip Odometer and Trip Computer
- HVAC -inc: Underseat Ducts- Illuminated Front Cupholder
- Instrument Panel Bin, Dashboard Storage, Interior Concealed Storage, Driver / Passenger And Rear Door Bins, Locking 1st Row Underseat Storage and 2nd Row Underseat Storage
- Interior Trim -inc: Metal-Look Instrument Panel Insert, Cabback Insulator, Metal-Look Door

- Panel Insert and Chrome/Metal-Look Interior Accents
- Keypad
- Leather-Trimmed 40/20/40 Front Seat -inc: heated and ventilated 10-way power driver and passenger w/power lumbar and memory driver's seat
- Leather/Metal-Look Steering Wheel- Locking Glove Box
- Manual Adjustable Front Head Restraints and Manual Adjustable Rear Head Restraints
- Manual Tilt/Telescoping Steering Column- Memory Settings -inc: Door Mirrors and Pedals
- Mini Overhead Console w/Storage and 1 12V DC Power Outlet - Outside Temp Gauge
- Passenger Seat- Perimeter Alarm- Pickup Cargo Box Lights
- Power 1st Row Windows w/Driver And Passenger 1-Touch Up/Down
- Power Adjustable Pedals- Power Door Locks w/Autolock Feature- Power Rear Windows
- Proximity Key For Doors And Push Button Start - Rear Cupholder
- Redundant Digital Speedometer
- Remote Keyless Entry w/Integrated Key Transmitter, Illuminated Entry and Panic Button
- Remote Releases -Inc: Keyfob Cargo Access
- SYNC 4 Connected Navigation Integrated Navigation System w/Voice Activation
- SYNC 4 w/Enhanced Voice Recognition -inc: 12" LCD capacitive touchscreen w/swipe capability, information on demand panel, wireless phone connection, cloud connected, Applink w/App catalog, 911 Assist, Apple CarPlay and Android Auto compatibility, digital owners manual, conversational voice command recognition and connected navigation, Note: Navigation services require SYNC@4 and FordPass Connect (optional on select vehicles), complimentary connect service and the FordPass app (see FordPass Terms for details), Customer receives a complimentary 90-day trial of navigation services when an eligible vehicle is added to a member's FordPass account, Trial period begins on the new vehicle warranty start date, At the end of the complimentary period, navigation service will terminate, Connected service and features depend on compatible AT&T network availability, Evolving technology/cellular networks/vehicle capability may limit functionality and prevent operation of connected features, FordPass App, compatible w/select smartphone platforms, is available via a download, Message and data rates may apply
- Seats w/Leatherette Back Material
- Securilock Anti-Theft Ignition (pats) Engine Immobilizer
- Smart Device Remote Engine Start- Trip Computer- Urethane Gear Shifter Material

Exterior

- Aluminum Panels- Black Grille w/Chrome Accents- Black Side Windows Trim
- Body-Colored Door Handles
- Body-Colored Power Heated Side Mirrors w/Driver Auto Dimming, Power Folding and Turn Signal Indicator
- Cargo Lamp w/High Mount Stop Light
- Chrome Front Bumper w/Body-Colored Rub Strip/Fascia Accent and 2 Tow Hooks
- Chrome Rear Step Bumper- Clearcoat Paint- Deep Tinted Glass
- Ford Co-Pilot360 - Autolamp Auto On/Off Aero-Composite Led Low/High Beam Auto High-Beam Daytime Running Lights Preference Setting Headlamps w/Delay-Off
- Front Fog Lamps- Full-Size Spare Tire Stored Underbody w/Crankdown
- Headlights-Automatic Highbeams- LED Brakelights- Perimeter/Approach Lights
- Power Rear Window w/Defroster- Regular Box Style- Steel Spare Wheel
- Tailgate Rear Cargo Access- Tailgate/Rear Door Lock Included w/Power Door Locks
- Tires: 275/65R18 BSW A/T- Variable Intermittent Wipers
- Wheels: 18" Machined-Aluminum -inc: magnetic painted pockets

Safety

- 1 12V DC Power Outlet- 2 Seatback Storage Pockets
- 60-40 Folding Split-Bench Front Facing Fold-Up Cushion Rear Seat - Air Filtration
- Compass- Cruise Control w/Steering Wheel Controls
- Day-Night Auto-Dimming Rearview Mirror- Delayed Accessory Power
- Digital/Analog Appearance
- Driver And Passenger Visor Vanity Mirrors w/Driver And Passenger Illumination
- Driver Seat- Dual Zone Front Automatic Air Conditioning
- FOB Controls -inc: Cargo Access and Remote Engine Start- Fade-To-Off Interior Lighting
- FordPass Connect 4G Mobile Hotspot Internet Access- Front And Rear Map Lights
- Front Center Armrest w/Storage and Rear Center Armrest
- Full Carpet Floor Covering -inc: Carpet Front And Rear Floor Mats - Full Cloth Headliner
- Gauges -inc: Speedometer, Odometer, Voltmeter, Oil Pressure, Engine Coolant Temp, Tachometer, Transmission Fluid Temp, Trip Odometer and Trip Computer
- HVAC -inc: Underseat Ducts- Illuminated Front Cupholder
- Instrument Panel Bin, Dashboard Storage, Interior Concealed Storage, Driver / Passenger And Rear Door Bins, Locking 1st Row Underseat Storage and 2nd Row Underseat Storage
- Interior Trim -inc: Metal-Look Instrument Panel Insert, Cabback Insulator, Metal-Look Door Panel Insert and Chrome/Metal-Look Interior Accents
- Keypad
- Leather-Trimmed 40/20/40 Front Seat -inc: heated and ventilated 10-way power driver and passenger w/power lumbar and memory driver's seat
- Leather/Metal-Look Steering Wheel- Locking Glove Box
- Manual Adjustable Front Head Restraints and Manual Adjustable Rear Head Restraints
- Manual Tilt/Telescoping Steering Column- Memory Settings -inc: Door Mirrors and Pedals

- Manual 11ft telescoping steering column- memory settings -inc: Door Mirrors and Pedals
- Mini Overhead Console w/Storage and 1 12V DC Power Outlet - Outside Temp Gauge
- Passenger Seat- Perimeter Alarm- Pickup Cargo Box Lights
- Power 1st Row Windows w/Driver And Passenger 1-Touch Up/Down
- Power Adjustable Pedals- Power Door Locks w/Autolock Feature- Power Rear Windows
- Proximity Key For Doors And Push Button Start - Rear Cupholder
- Redundant Digital Speedometer
- Remote Keyless Entry w/Integrated Key Transmitter, Illuminated Entry and Panic Button
- Remote Releases -Inc: Keyfob Cargo Access
- SYNC 4 Connected Navigation Integrated Navigation System w/Voice Activation
- SYNC 4 w/Enhanced Voice Recognition -inc: 12" LCD capacitive touchscreen w/swipe capability, information on demand panel, wireless phone connection, cloud connected, AppLink w/App catalog, 911 Assist, Apple CarPlay and Android Auto compatibility, digital owners manual, conversational voice command recognition and connected navigation, Note: Navigation services require SYNC@4 and FordPass Connect (optional on select vehicles), complimentary connect service and the FordPass app (see FordPass Terms for details), Customer receives a complimentary 90-day trial of navigation services when an eligible vehicle is added to a member's FordPass account, Trial period begins on the new vehicle warranty start date, At the end of the complimentary period, navigation service will terminate, Connected service and features depend on compatible AT&T network availability, Evolving technology/cellular networks/vehicle capability may limit functionality and prevent operation of connected features, FordPass App, compatible w/select smartphone platforms, is available via a download, Message and data rates may apply
- Seats w/Leatherette Back Material
- Securilock Anti-Theft Ignition (pats) Engine Immobilizer
- Smart Device Remote Engine Start- Trip Computer- Urethane Gear Shifter Material

Mechanical

- 1760# Maximum Payload- 200 Amp Alternator- 26 Gal. Fuel Tank- 3.55 Axle Ratio
- 4-Wheel Disc Brakes w/4-Wheel ABS, Front And Rear Vented Discs, Brake Assist, Hill Hold Control and Electric Parking Brake
- 70-Amp/Hr 610CCA Maintenance-Free Battery w/Run Down Protection
- Auto Locking Hubs- Automatic Full-Time Four-Wheel Drive
- Class IV Trailer Hitch Receiver -inc: towing capability up to TBD lbs, on 3.3L V6 PFDI engine (99B) and 2.7L EcoBoost engine (99P) or up to TBD lbs, on 3.5L EcoBoost engine (998) and 5.0L V8 engine (995), 7/4-pin connector, class IV trailer hitch receiver, smart trailer tow connector (BLIS w/trailer tow coverage where BLIS is available) Ordering the Trailer Tow Package does not include Integrated Brake Controller (67T). Integrated Brake Controller (67T) is a standalone option and must be ordered separately.
- Double Wishbone Front Suspension w/Coil Springs
- Electric Power-Assist Speed-Sensing Steering- Electronic Transfer Case
- Engine: 2.7L V6 EcoBoost w/o 52X-inc: auto start-stop technology - Front Anti-Roll Bar
- GVWR: 6,600 lbs Payload Package- HD Shock Absorbers
- Leaf Rear Suspension w/Leaf Springs- Single Stainless Steel Exhaust
- Towing Equipment -inc: Trailer Sway Control
- Transmission: Electronic 10-Speed Automatic -inc: selectable drive modes: normal, ECO, sport, tow/haul, slippery, deep snow/sand and mud/rut

Option Packages

Factory Installed Packages

ENGINE: 3.5L V6 ECOBOOST

-inc: auto start-stop technology,
GVWR: 7,050 lbs Payload
Package, 3.31 Axle Ratio **\$1,540**

TRANSMISSION: ELECTRONIC 10-SPEED AUTOMATIC

-inc: selectable drive modes:
normal, ECO, sport, tow/haul,
slippery, deep snow/sand and
mud/rut

360 DEGREE CAMERA

-inc: trailer reverse guidance **\$765**

AUTO START-STOP REMOVAL

-\$50

BED UTILITY PACKAGE

-inc: BoxLink, 4 premium locking
cleats, 1 FD Box 1 in/trim **\$995**

...
Tailgate Step w/Tailgate Work
Surface, Power Tailgate

**EXTENDED RANGE 36 GALLON FUEL
TANK**

\$445

FORD CO-PILOT360 ASSIST 2.0

-inc: Evasive Steering Assist,
Intelligent Adaptive Cruise
Control w/Stop & Go, lane
centering, Speed Sign
Recognition, Connected Built-
In Navigation, Navigation
services require SYNC4 and
FordPass Connect (optional on
select vehicles), complimentary
connect service and the
FordPass app (see FordPass
Terms for details), Eligible
vehicles receive a
complimentary 90-day trial of
navigation services that begins
on the new vehicle warranty
start date. Customers must
unlock the navigation service
trial by activating the eligible
vehicle w/a FordPass member
account. If not subscribed by
the end of the complimentary
period, the navigation service
will terminate. Connected
service and features depend
on compatible AT&T network
availability, Evolving
technology/cellular
networks/vehicle capability
may limit functionality and
prevent operation of connected
features, FordPass App,
compatible w/select
smartphone platforms, is
available via a download,
Message and data rates may
apply.

\$750

FX4 OFF-ROAD PACKAGE

-inc: Off-Road Tuned Front Shock
Absorbers, Skid Plates, fuel
tank, transfer case and front
differential, Monotube Rear
Shocks, Rock Crawl Mode, 4x4
FX4 Off-Road Bodyside Decal,
Hill Descent Control

\$1,095

INTERIOR WORK SURFACE

\$195

**LARIAT SPORT APPEARANCE
PACKAGE**

-inc: unique interior finish, Box
Side Decals, Chrome Single-
Tip Exhaust, Wheels: 18" 6-
Spoke Machined Aluminum,
gloss black painted pockets,
Accent-Color Angular Step
Bars, Dark 2-Bar & 1 Minor Bar
Style Grille, black surround
and black mesh, Body-Color
Front & Rear Bumpers

\$2,205

TRAILER TOW PACKAGE

-inc: Towing capability up to TBD
lbs, Integrated Trailer Brake
Controller, Pro Trailer Backup
Assist

\$1,325

EQUIPMENT GROUP 501A MID

-inc: Radio: B&O Sound System
by Bang & Olufsen, HD radio
and 8 speakers including
subwoofer, Universal Garage
Door Opener, Onboard 400W
Outlet, Replaces two (2) front
USB charge only ports and an
additional outlet in the bed

\$1,550

CARBONIZED GRAY METALLIC

Option Packages Total

\$10,815



Texas Vehicle Exchange

tveauto.com

972-242-5350

1724 Luna Road

Carrollton, TX 75006

© 2023 AutoRevo - All rights reserved. - Powered by [AutoRevo](#)