

2019 INFINITI Q50 3.0t LUXE

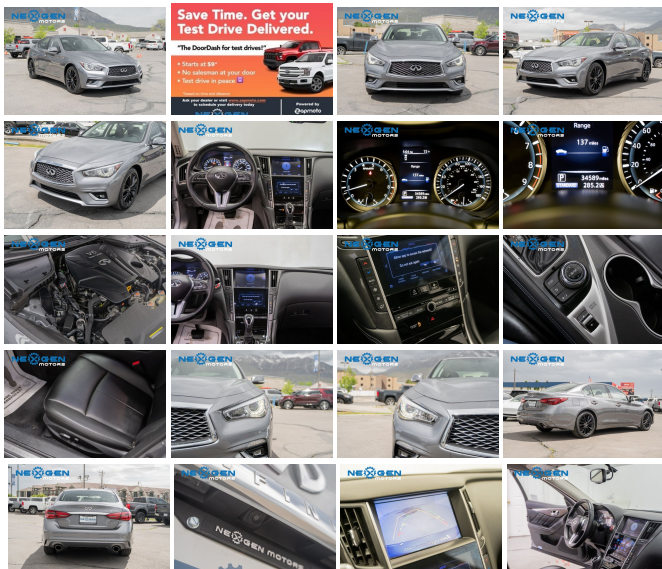
View this car on our website at nexgenmotorsutah.com/7089054/ebrochure



Our Price **\$24,500**

Specifications:

Year:	2019
VIN:	JN1EV7AR6KM552940
Make:	INFINITI
Stock:	552940
Model/Trim:	Q50 3.0t LUXE
Condition:	Pre-Owned
Body:	Sedan
Exterior:	Black Obsidian
Engine:	Engine: 3.0L V6 Twin Turbo DOHC
Interior:	Graphite
Mileage:	34,510
Drivetrain:	All Wheel Drive
Economy:	City 19 / Highway 27



2019 INFINITI Q50 3.0t LUXE

Nexgen Motors - 801-874-3747 - View this car on our website at nexgenmotorsutah.com/7089054/ebrochure

Our Location :



2019 INFINITI Q50 3.0t LUXE

Nexgen Motors - 801-874-3747 - View this car on our website at nexusmotorsutah.com/7089054/ebrochure

Installed Options

Interior

- Front Bucket Seats -inc: 8-way power driver w/adjustable lumbar support and 8-way power passenger
- HomeLink Garage Door Transmitter- Cruise Control w/Steering Wheel Controls
- Dual Zone Front Automatic Air Conditioning
- HVAC -inc: Underseat Ducts and Console Ducts - Illuminated Locking Glove Box
- Driver Foot Rest- Full Cloth Headliner- Leatherette Door Trim Insert
- Leather/Aluminum Gear Shifter Material
- Interior Trim -inc: Genuine Wood Instrument Panel Insert, Genuine Wood Door Panel Insert, Genuine Wood Console Insert and Chrome Interior Accents
- Leatherette Seating Surfaces- Day-Night Auto-Dimming Rearview Mirror
- Driver And Passenger Visor Vanity Mirrors w/Driver And Passenger Illumination, Driver And Passenger Auxiliary Mirror
- Full Floor Console w/Covered Storage, Mini Overhead Console w/Storage and 2 12V DC Power Outlets
- Front And Rear Map Lights- Fade-To-Off Interior Lighting
- Full Carpet Floor Covering -inc: Carpet Front And Rear Floor Mats
- Carpet Floor Trim and Carpet Trunk Lid/Rear Cargo Door Trim - Cargo Space Lights
- FOB Controls -inc: Cargo Access and Windows- Driver And Passenger Door Bins
- Power 1st Row Windows w/Front And Rear 1-Touch Up/Down - Delayed Accessory Power
- Power Door Locks w/Autolock Feature- Trip Computer- Outside Temp Gauge
- Analog Appearance- Seats w/Leatherette Back Material
- Manual Anti-Whiplash Adjustable Front Head Restraints and Manual Adjustable Rear Head Restraints
- Front Center Armrest and Rear Center Armrest w/Pass-Thru
- 2 Seatback Storage Pockets- Perimeter Alarm- Driver Seat- Passenger Seat
- Bench Front Facing Rear Seat - Manual Tilt/Telescoping Steering Column
- Gauges -inc: Speedometer, Odometer, Engine Coolant Temp, Tachometer, Trip Odometer and Trip Computer
- Power Rear Windows- Leather Steering Wheel- Front Cupholder- Rear Cupholder
- Compass- Proximity Key For Doors And Push Button Start - Valet Function

- Power Fuel Flap Locking Type
- Remote Keyless Entry w/Integrated Key Transmitter, 2 Door Curb/Courtesy, Illuminated Entry, Illuminated Ignition Switch and Panic Button
- Remote Releases -Inc: Power Cargo Access and Power Fuel- Engine Immobilizer
- 2 12V DC Power Outlets- Air Filtration

Exterior

- Body-Colored Power Heated Side Mirrors w/Manual Folding and Turn Signal Indicator
- Fixed Rear Window w/Defroster- Light Tinted Glass
- Speed Sensitive Rain Detecting Variable Intermittent Wipers
- Galvanized Steel/Aluminum Panels- Chrome Grille- Trunk Rear Cargo Access
- Auto On/Off Projector Beam Led Low/High Beam Daytime Running Headlamps w/Delay-Off
- Front Fog Lamps- Perimeter/Approach Lights- LED Brakelights- Chrome Door Handles
- Chrome Side Windows Trim and Black Front Windshield Trim
- Body-Colored Rear Bumper w/Chrome Rub Strip/Fascia Accent
- Body-Colored Front Bumper w/Chrome Rub Strip/Fascia Accent
- Express Open/Close Sliding And Tilting Glass 1st Row Sunroof w/Sunshade
- Clearcoat Paint- 18" X 7.5" Aluminum Wheels w/Machined Accents
- Tires: P225/50R18 AS Run-Flat- Wheels: 18" x 7.5" Aluminum-Alloy

Safety

- Front Bucket Seats -inc: 8-way power driver w/adjustable lumbar support and 8-way power passenger
- HomeLink Garage Door Transmitter- Cruise Control w/Steering Wheel Controls
- Dual Zone Front Automatic Air Conditioning
- HVAC -inc: Underseat Ducts and Console Ducts - Illuminated Locking Glove Box
- Driver Foot Rest- Full Cloth Headliner- Leatherette Door Trim Insert
- Leather/Aluminum Gear Shifter Material
- Interior Trim -inc: Genuine Wood Instrument Panel Insert, Genuine Wood Door Panel Insert, Genuine Wood Console Insert and Chrome Interior Accents
- Leatherette Seating Surfaces- Day-Night Auto-Dimming Rearview Mirror
- Driver And Passenger Visor Vanity Mirrors w/Driver And Passenger Illumination, Driver And Passenger Auxiliary Mirror
- Full Floor Console w/Covered Storage, Mini Overhead Console w/Storage and 2 12V DC Power Outlets
- Front And Rear Map Lights- Fade-To-Off Interior Lighting
- Full Carpet Floor Covering -inc: Carpet Front And Rear Floor Mats
- Carpet Floor Trim and Carpet Trunk Lid/Rear Cargo Door Trim - Cargo Space Lights
- FOB Controls -inc: Cargo Access and Windows- Driver And Passenger Door Bins
- Power 1st Row Windows w/Front And Rear 1-Touch Up/Down - Delayed Accessory Power
- Power Door Locks w/Autolock Feature- Trip Computer- Outside Temp Gauge
- Analog Appearance- Seats w/Leatherette Back Material
- Manual Anti-Whiplash Adjustable Front Head Restraints and Manual Adjustable Rear Head Restraints
- Front Center Armrest and Rear Center Armrest w/Pass-Thru
- 2 Seatback Storage Pockets- Perimeter Alarm- Driver Seat- Passenger Seat
- Bench Front Facing Rear Seat - Manual Tilt/Telescoping Steering Column
- Gauges -inc: Speedometer, Odometer, Engine Coolant Temp, Tachometer, Trip Odometer and Trip Computer
- Power Rear Windows- Leather Steering Wheel- Front Cupholder- Rear Cupholder
- Compass- Proximity Key For Doors And Push Button Start - Valet Function
- Power Fuel Flap Locking Type
- Remote Keyless Entry w/Integrated Key Transmitter, 2 Door Curb/Courtesy, Illuminated Entry, Illuminated Ignition Switch and Panic Button
- Remote Releases -Inc: Power Cargo Access and Power Fuel- Engine Immobilizer
- 2 12V DC Power Outlets- Air Filtration

Mechanical

- 4-Wheel Disc Brakes w/4-Wheel ABS, Front And Rear Vented Discs, Brake Assist and Hill Hold Control
- Multi-Link Rear Suspension w/Coil Springs
- Double Wishbone Front Suspension w/Coil Springs
- Dual Stainless Steel Exhaust w/Chrome Tailpipe Finisher- 20 Gal. Fuel Tank
- Electric Power-Assist Speed-Sensing Steering- Front And Rear Anti-Roll Bars
- Gas-Pressurized Shock Absorbers
- 62-Amp/Hr Maintenance-Free Battery w/Run Down Protection- 150 Amp Alternator
- 2.94 Axle Ratio- Full-Time All-Wheel
- Transmission w/Driver Selectable Mode and Sequential Shift Control
- Transmission: 7-Speed Automatic w/Overdrive -inc: manual shift mode and INFINITI drive mode selector
- Engine: 3.0L V6 Twin Turbo DOHC

- Engine: 3.6L V6 Twin Turbo 2010

Nexgen Motors
nexgenmotorsutah.com
801-874-3747
986 N State St.
Orem, UT 84057

© 2023 AutoRevo - All rights reserved. - Powered by [AutoRevo](#)