

# 2016 Mercedes-Benz Sprinter Worker 2500

View this car on our website at [alttx.com/7088436/ebrochure](http://alttx.com/7088436/ebrochure)



Our Price **\$26,883**

Retail Value ~~\$29,430~~

## Specifications:

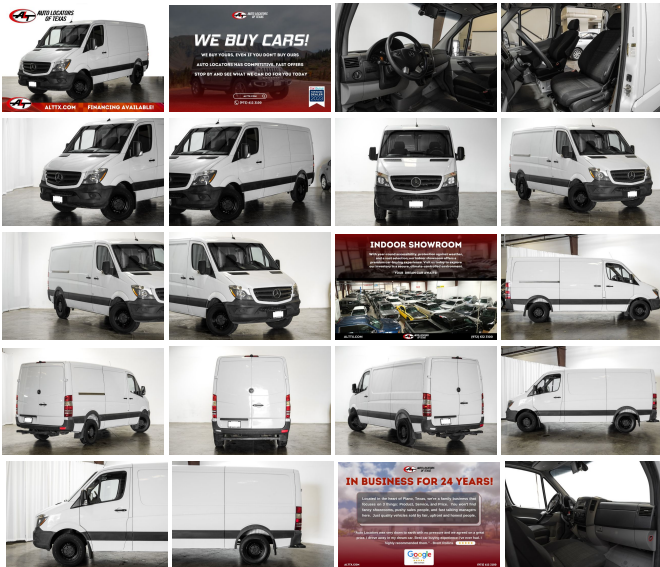
Year:	2016
VIN:	WD3PE7DD9GP255778
Make:	Mercedes-Benz
Stock:	3830
Model/Trim:	Sprinter Worker 2500
Condition:	Pre-Owned
Body:	Minivan/Van
Exterior:	Arctic White
Engine:	BlueTEC 2.1L Diesel Twin Turbo I4 161hp 265ft. lbs.
Interior:	Black Cloth
Transmission:	7-Speed Shifttable Automatic
Mileage:	99,846
Drivetrain:	Rear Wheel Drive

## 2016 MERCEDES-BENZ SPRINTER CARGO

**FINANCING AVAILABLE**

**JUST SERVICED**

- Large Cargo Volume
- Rear Back Camera
- Steering Wheel Controls
- Bluetooth Technology
- Hands-Free Communication
- Air Conditioning
- AM/FM Radio
- Overhead Airbags
- Power Windows/Locks
- Power Mirrors
- Security System
- Brake Assist
- Cruise Control
- External Temperature



Keyless Entry

And much more!

\*\*\*

After 25 years in business, we've streamlined the buying process to be completely hassle and stress free. Why wait? We can have you in and out in as little as 45 minutes from the time you step into the dealership to the time you drive away in your new vehicle. Our customers' great reviews have a common theme, great prices, quality vehicles and an efficient no hassle environment. Just look on Yelp and Google to read what our 10,000 plus happy customers are saying about Auto Locators of Texas!

We pride ourselves on our friendly, no-pressure approach to selling vehicles. We offer a wide selection of the highest quality used cars, trucks, and SUV's. Our finance department works hard to find every customer the best deal. Trade-ins are always welcome so we can answer your question of "what is my trade worth".

We offer a wide variety of services from detailing, ding repair, body shop, service, and extended service contracts. Please take a look at our website at <https://www.alttx.com>. We hope to see you soon! WE HOPE TO SEE YOU SOON!

---

2016 Mercedes-Benz Sprinter Worker 2500

Auto Locators of Texas - (972) 612-3100 - View this car on our website at [alttx.com/7088436/ebrochure](https://www.alttx.com/7088436/ebrochure)

## Vehicle History Report : as Of 05/19/2024

**CARFAX**

Snapshot

**2016 MERCEDES-BENZ SPRINTER 2500**



No accidents or damage reported to CARFAX



12 Service history records



2 Previous owners



Types of owners: Corporate, Personal



Last owned in Texas



99,849 Last reported odometer reading



**FREE CARFAX Report**

See the full CARFAX Report for additional information

\*carfax Snapshot is a reflection of available information on the date the report was pulled. carfax is constantly being updated with new information and is subject to change at any time.

## Our Location :



2016 Mercedes-Benz Sprinter Worker 2500

Auto Locators of Texas - (972) 612-3100 - View this car on our website at [alltx.com/7088436/ebrochure](http://alltx.com/7088436/ebrochure)

## Installed Options

### Interior

- Manual Air Conditioning- Power Door Locks
- Remote Keyless Entry w/Integrated Key Transmitter and Illuminated Entry
- Tunja Seat Upholstery- 2 12V DC Power Outlets
- 4-Way Driver Seat -inc: Manual Recline and Fore/Aft Movement
- 4-Way Passenger Seat -inc: Manual Recline and Fore/Aft Movement - Air Filtration
- Analog Appearance- Ashtray- Board Floor Trim
- Bucket Seats -inc: adjustable front passenger seat - Cargo Space Lights
- Day-Night Rearview Mirror- Driver And Front Passenger Armrests- Driver Foot Rest
- Engine Immobilizer- FOB Controls -inc: Cargo Access- Fade-To-Off Interior Lighting
- Front Cigar Lighter(s)- Front Cloth Headliner- Front Cupholder
- Front Only Vinyl/Rubber Floor Covering
- Full Overhead Console w/Storage and 2 12V DC Power Outlets
- Gauges -inc: Speedometer, Odometer, Tachometer and Trip Odometer
- HVAC -inc: Residual Heat Recirculation and Supplemental Heater
- Instrument Panel Bin, Dashboard Storage, Interior Concealed Storage, Driver And Passenger Door Bins
- Locking Glove Box- Manual Adjustable Front Head Restraints
- Manual Tilt/Telescoping Steering Column- Outside Temp Gauge
- Power 4th Row Windows w/Driver And Passenger 1 Touch Down

## Option Packages

### Factory Installed Packages

["ENGINE: 2.1L 4-CYLINDER BLUETEC TURBO DIESEL"]

["ARCTIC WHITE"]

["BLACK, TUNJA SEAT UPHOLSTERY"]

- Power 1st Row Windows w/Driver And Passenger 1-Touch Down
- Refrigerant Compressor (KMV)- Seats w/Vinyl Back Material
- Urethane Gear Shifter Material

---

## Exterior

- Argent Front Bumper w/2 Tow Hooks- Argent Rear Bumper w/1 Tow Hook
- Fixed Interval Wipers- Full-Size Spare Tire Stored Underbody w/Crankdown
- Sliding Rear Passenger Side Door
- Tailgate/Rear Door Lock Included w/Power Door Locks- Wheels: 6.5J x 16 Steel
- Aero-Composite Halogen Daytime Running Headlamps- Argent Bodyside Moldings
- Black Door Handles- Black Grille
- Black Manual Side Mirrors w/Convex Spotter and Manual Folding
- Black Side Windows Trim and Black Front Windshield Trim - Clearcoat Paint
- ECO Power Steering Pump- Front License Plate Bracket- Fuel Pump, Electric
- Fully Galvanized Steel Panels- LED Brakelights- Light Tinted Glass- Splash Guards
- Split Swing-Out Rear Cargo Access- Steel Spare Wheel
- Tires: LT245/75R16 -inc: Kumho brand

---

## Safety

- Manual Air Conditioning- Power Door Locks
- Remote Keyless Entry w/Integrated Key Transmitter and Illuminated Entry
- Tunja Seat Upholstery- 2 12V DC Power Outlets
- 4-Way Driver Seat -inc: Manual Recline and Fore/Aft Movement
- 4-Way Passenger Seat -inc: Manual Recline and Fore/Aft Movement - Air Filtration
- Analog Appearance- Ashtray- Board Floor Trim
- Bucket Seats -inc: adjustable front passenger seat - Cargo Space Lights
- Day-Night Rearview Mirror- Driver And Front Passenger Armrests- Driver Foot Rest
- Engine Immobilizer- FOB Controls -inc: Cargo Access- Fade-To-Off Interior Lighting
- Front Cigar Lighter(s)- Front Cloth Headliner- Front Cupholder
- Front Only Vinyl/Rubber Floor Covering
- Full Overhead Console w/Storage and 2 12V DC Power Outlets
- Gauges -inc: Speedometer, Odometer, Tachometer and Trip Odometer
- HVAC -inc: Residual Heat Recirculation and Supplemental Heater
- Instrument Panel Bin, Dashboard Storage, Interior Concealed Storage, Driver And Passenger Door Bins
- Locking Glove Box- Manual Adjustable Front Head Restraints
- Manual Tilt/Telescoping Steering Column- Outside Temp Gauge
- Power 1st Row Windows w/Driver And Passenger 1-Touch Down
- Refrigerant Compressor (KMV)- Seats w/Vinyl Back Material
- Urethane Gear Shifter Material

---

## Mechanical

- Transmission w/Sequential Shift Control and Oil Cooler
- Transmission: 7G-TRONIC Automatic- 200 Amp Alternator- 24.5 Gal. Fuel Tank
- 3.92 Axle Ratio- 3512# Maximum Payload
- 4-Wheel Disc Brakes w/4-Wheel ABS, Front Vented Discs, Brake Assist and Hill Hold Control
- AGM Battery 12V 95 Ah- Alternator Management
- Engine: 2.1L 4-Cylinder BlueTEC Turbo Diesel
- Front HD Anti-Roll Bar and Rear Anti-Roll Bar- GVWR: 8,550 lbs- HD Shock Absorbers
- Hydraulic Power-Assist Steering- Leaf Rear Suspension w/Leaf Springs
- Rear-Wheel Drive- Single Stainless Steel Exhaust
- Strut Front Suspension w/Transverse Leaf Springs

---

Auto Locators of Texas

[alttx.com](http://alttx.com)

(972) 612-3100

4460 Tradition Trail

Plano, TX 75093

© 2024 AutoRevo - All rights reserved. - Powered by [AutoRevo](#)