



2011 Subaru Outback 2.5i

Our Price \$8,995

View this vehicle on our website at dakotamotor.com



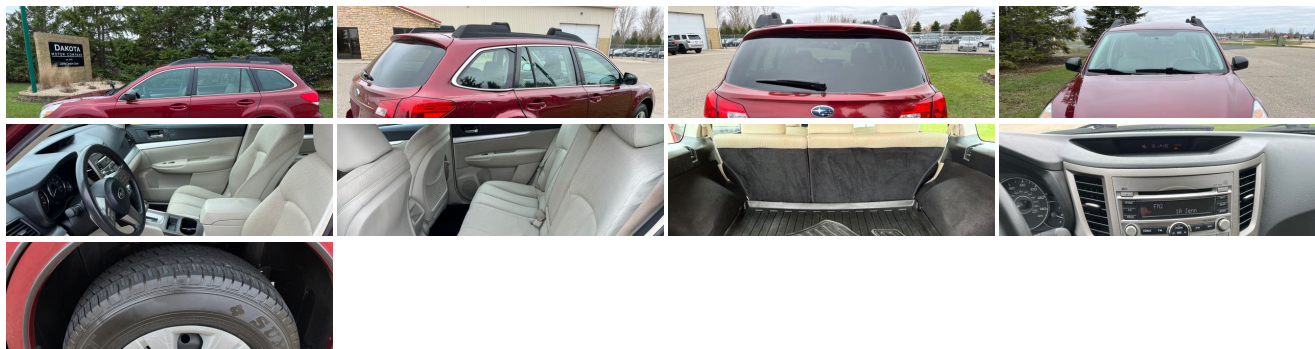
(651) 460-6655

22098 Canton Court , Farmington, MN 55024

Photos

Details

Contact



Specifications:

Year:	2011
VIN:	4S4BRBAC1B3426117

Make:	Subaru
Model/Trim:	Outback 2.5i
Condition:	Pre-Owned
Body:	Wagon
Exterior:	Red
Engine:	2.5L SOHC SMPI 16-valve 4-cyl boxer engine
Interior:	Tan Cloth
Mileage:	151,533
Drivetrain:	All Wheel Drive
Economy:	City 22 / Highway 29

Vehicle Description

ALL WHEEL DRIVE!!LOW MILES!! LOW PRICE!!

Check out our full line of inventory at DAKOTAMOTOR.COM

Call us anytime and ask for Bart or David and we will be happy to assist you. For your convenience please call before you come to be certain of availability. Full financing available. All of our vehicles have been checked by our in house service department. All of our vehicles are clean title and have actual miles. Enjoy our low overhead low price philosophy. We buy in bulk and sell at wholesale cost to save you the new car store markup!! 30years in wholesaling makes us retailing's smartest choice for a price savvy saver.

Installed Options

Interior

- (2) 12V aux pwr outlets in center console
- Integrated ignition key w/remote keyless entry system
- Off-black front & rear carpeted floor mats- Pwr door locks- Security system
- Steering wheel mounted paddle shifters- (2) cargo area grocery bag hooks
- (4) cargo area tie-down hooks- (8) cupholders- 3-spoke steering wheel
- 60/40 split fold-down reclining rear bench seat -inc: (3) head restraints
- Air filtration system- Anti-theft engine immobilizer- CFC-free manual air conditioning
- Cloth seat trim- Cruise control
- Digital trip computer -inc: ECO fuel economy gauge, fuel level gauge
- Dual illuminated visor vanity mirrors w/lids
- Front bucket seats -inc: 6-way manual driver seat, 4-way manual passenger seat, adjustable head restraints
- Instrument panel storage bin
- Instrumentation-inc: tachometer, analog speedometer, clock, exterior temp
- Off-black carpeted flooring
- Overhead console -inc: dual front maplights, sunglasses holder
- Pwr windows w/drivers-side auto-down, illuminated switches- Rear seat armrest
- Removable cargo tray- Silver Metallic interior trim
- Tilt/telescopic steering column w/illuminated ignition switch ring
- Underfloor storage in cargo area

Exterior

- 16" steel wheels w/covers- Auto-on 4-beam headlights
- Black manual-folding pwr mirrors- Body color door handles
- P215/70R16 all-season tires- Roof rails w/integrated & retractable crossbars
- Single-speed fixed intermittent rear window wiper w/washer, de-icer
- Variable intermittent windshield wipers

Safety

- (2) 12V aux pwr outlets in center console
- Integrated ignition key w/remote keyless entry system
- Off-black front & rear carpeted floor mats- Pwr door locks- Security system
- Steering wheel mounted paddle shifters- (2) cargo area grocery bag hooks
- (4) cargo area tie-down hooks- (8) cupholders- 3-spoke steering wheel
- 60/40 split fold-down reclining rear bench seat -inc: (3) head restraints
- Air filtration system- Anti-theft engine immobilizer- CFC-free manual air conditioning
- Cloth seat trim- Cruise control
- Digital trip computer -inc: ECO fuel economy gauge, fuel level gauge
- Dual illuminated visor vanity mirrors w/lids
- Front bucket seats -inc: 6-way manual driver seat, 4-way manual passenger seat, adjustable head restraints
- Instrument panel storage bin
- Instrumentation-inc: tachometer, analog speedometer, clock, exterior temp
- Off-black carpeted flooring
- Overhead console -inc: dual front maplights, sunglasses holder
- Pwr windows w/drivers-side auto-down, illuminated switches- Rear seat armrest
- Removable cargo tray- Silver Metallic interior trim
- Tilt/telescopic steering column w/illuminated ignition switch ring
- Underfloor storage in cargo area

Mechanical

- Lineartronic Continuously Variable Transmission (CVT) w/manual mode
- 2.5L SOHC SMPI 16-valve 4-cyl boxer engine - 4-wheel disc brakes
- Electronic throttle control (ETC)
- HD raised McPherson strut front/double-wishbone rear suspension
- Pwr assisted steering- Symmetrical all-wheel drive

Dakota Motor Company

Dakota Motor Company

View this car on our website at dakotamotor.com/7086367

Website: dakotamotor.com

Phone: (651) 460-6655

Map: 22098 Canton Court, Farmington, MN 55024

