

# 2017 Nissan Pathfinder Platinum

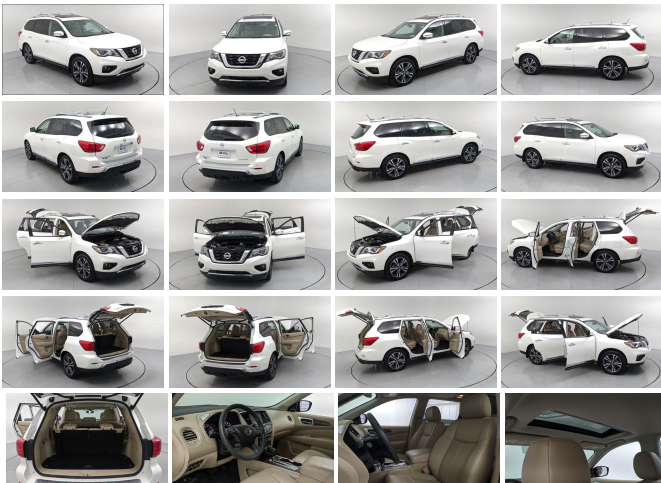
View this car on our website at [charlestonautosales.com/7084983/ebrochure](http://charlestonautosales.com/7084983/ebrochure)



Lowest **\$29,600**

## Specifications:

<b>Year:</b>	2017
<b>VIN:</b>	5N1DR2MN1HC696673
<b>Make:</b>	Nissan
<b>Stock:</b>	432392A
<b>Model/Trim:</b>	Pathfinder Platinum
<b>Condition:</b>	Pre-Owned
<b>Body:</b>	SUV
<b>Exterior:</b>	Pearl White
<b>Engine:</b>	Engine: 3.5L DI V6
<b>Interior:</b>	Almond Leather
<b>Mileage:</b>	23,950
<b>Economy:</b>	City 20 / Highway 27



CARFAX 1-Owner, Excellent Condition, Crews Forever, GREAT MILES 23,950! PRICE DROP FROM \$31,916, EPA 27 MPG Hwy/20 MPG City! Heated/Cooled Leather Seats, Sunroof, NAV, 3rd Row Seat, Rear Air, Power Liftgate, Heated Rear Seat, Tow Hitch KEY FEATURES INCLUDE Leather Seats, Third Row Seat, Navigation, Power Liftgate, Rear Air, Heated Driver Seat, Heated Rear Seat, Cooled Driver Seat, Back-Up Camera, Premium Sound System, Satellite Radio, iPod/MP3 Input, Onboard Communications System, Trailer Hitch, Dual Moonroof Rear Spoiler, MP3 Player, Remote Trunk Release, Privacy Glass, Keyless Entry. OPTION PACKAGES SPECIAL PAINT - PEARL WHITE. Nissan Platinum with Pearl White exterior and Almond interior features a V6 Cylinder Engine with 284 HP at 6400 RPM\*. Non-Smoker vehicle, COMES WITH OUR CREWS FOREVER PROTECTION PLAN, CLEAN CARFAX AND ONE OWNER TRADE-IN EXCELLENT VALUE Was \$31,916. SHOP WITH CONFIDENCE CARFAX 1-Owner Passed our 152-point inspection for safety and reliability. Powertrain Lifetime Limited Warranty. Clean title and includes a free CARFAX Vehicle History Report. WHY BUY FROM US You've got a friend in the car business. Pricing analysis performed on 5/16/2022. Horsepower calculations based on trim engine configuration. Fuel economy calculations based on original manufacturer data for trim engine configuration. Please confirm the accuracy of the included equipment by calling us prior to purchase.

## Our Location :



2017 Nissan Pathfinder Platinum

Charleston Auto Sales - (843) 297-3211 - View this car on our website at [charlestonautosales.com/7084983/ebrochure](http://charlestonautosales.com/7084983/ebrochure)

## Installed Options

### Interior

- Front Heated & Cooled Bucket Seats -inc: 7 passenger seating capacity, 8-way power driver's seat w/memory and 2-way power lumbar support and 4-way power front passenger seat
- Driver Seat- Passenger Seat
- 60-40 Folding EZ Flex Split-Bench Front Facing Heated Manual Reclining Fold Forward Seatback Rear Seat w/Manual Fore/Aft
- Power Tilt/Telescoping Steering Column
- Gauges -inc: Speedometer, Odometer, Engine Coolant Temp, Tachometer, Trip Odometer and Trip Computer
- Power Rear Windows and Fixed 3rd Row Windows
- NissanConnect Selective Service Internet Access
- Fixed 50-50 Bench Leatherette 3rd Row Seat Front, Manual Recline, Manual Fold Into Floor and 2 Fixed Head Restraints
- Heated Leather Steering Wheel w/Auto Tilt-Away- Front Cupholder- Rear Cupholder
- Valet Function- Proximity Key For Doors And Push Button Start
- Remote Keyless Entry w/Integrated Key Transmitter, 2 Door Curb/Courtesy, Illuminated Entry, Illuminated Ignition Switch and Panic Button
- Remote Releases -Inc: Proximity Cargo Access- HomeLink Garage Door Transmitter
- Cruise Control w/Steering Wheel Controls- Distance Pacing w/Traffic Stop-Go
- Voice Activated Dual Zone Front Automatic Air Conditioning
- Rear HVAC w/Separate Controls
- HVAC -inc: Underseat Ducts, Headliner/Pillar Ducts and Console Ducts
- Illuminated Locking Glove Box- Driver Foot Rest- Full Cloth Headliner
- Leather Gear Shifter Material- Leather Door Trim Insert
- Interior Trim -inc: Simulated Wood Instrument Panel Insert, Simulated Wood/Metal-Look Door Panel Insert, Simulated Wood Console Insert and Chrome/Metal-Look Interior Accents
- Leather Seating Surfaces- Day-Night Auto-Dimming Rearview Mirror
- Driver And Passenger Visor Vanity Mirrors w/Driver And Passenger Illumination, Driver And Passenger Auxiliary Mirror
- Full Floor Console w/Covered Storage, Mid-Center Console w/Storage and 4-10V DC

- Full Floor Console w/Covered Storage, Mini Overhead Console w/Storage and 4 12V DC Power Outlets
- Front And Rear Map Lights- Fade-To-Off Interior Lighting- Full Carpet Floor Covering
- Carpet Floor Trim- Cargo Area Concealed Storage- Trunk/Hatch Auto-Latch
- Cargo Space Lights- Smart Device Integration
- FOB Controls -inc: Cargo Access, Windows and Remote Engine Start
- Memory Settings -inc: Door Mirrors and Steering Wheel
- NissanConnect Services Tracker System- Driver / Passenger And Rear Door Bins
- Delayed Accessory Power- Power Door Locks w/Autolock Feature
- Power 1st Row Windows w/Driver And Passenger 1-Touch Up/Down - Systems Monitor
- Trip Computer- Outside Temp Gauge- Analog Appearance
- Manual Adjustable Front Head Restraints and Manual Adjustable Rear Head Restraints
- Front Center Armrest and Rear Center Armrest w/Storage- 2 Seatback Storage Pockets
- Seats w/Leatherette Back Material- Perimeter Alarm- Engine Immobilizer- Air Filtration
- 4 12V DC Power Outlets

## Exterior

- Wheels: 20" Machined Alloy w/Lt Gun Metal Finish- Tires: P235/55HR20 AS
- Steel Spare Wheel- Compact Spare Tire Stored Underbody w/Crankdown
- Clearcoat Paint
- Express Open/Close Sliding And Tilting Glass 1st Row Sunroof w/Sunshade
- Fixed Glass 2nd Row Sunroof w/Power Sunshade
- Body-Colored Front Bumper w/Chrome Bumper Insert
- Body-Colored Rear Bumper w/Black Rub Strip/Fascia Accent and Chrome Bumper Insert
- Black Side Windows Trim, Black Front Windshield Trim and Black Rear Window Trim
- Chrome Door Handles- Chrome Bodyside Moldings and Black Bodyside Cladding
- Body-Colored Power w/Tilt Down Heated Side Mirrors w/Manual Folding and Turn Signal Indicator
- Fixed Rear Window w/Fixed Interval Wiper and Defroster- Deep Tinted Glass
- Speed Sensitive Variable Intermittent Wipers- Galvanized Steel/Aluminum Panels
- Lip Spoiler- Black Grille w/Chrome Surround- Power Liftgate Rear Cargo Access
- Tailgate/Rear Door Lock Included w/Power Door Locks - Roof Rack Rails Only
- Front Fog Lamps
- Auto On/Off Projector Beam Led Low Beam Daytime Running Headlamps w/Delay-Off

## Safety

- Front Heated & Cooled Bucket Seats -inc: 7 passenger seating capacity, 8-way power driver's seat w/memory and 2-way power lumbar support and 4-way power front passenger seat
- Driver Seat- Passenger Seat
- 60-40 Folding EZ Flex Split-Bench Front Facing Heated Manual Reclining Fold Forward Seatback Rear Seat w/Manual Fore/Aft
- Power Tilt/Telescoping Steering Column
- Gauges -inc: Speedometer, Odometer, Engine Coolant Temp, Tachometer, Trip Odometer and Trip Computer
- Power Rear Windows and Fixed 3rd Row Windows
- NissanConnect Selective Service Internet Access
- Fixed 50-50 Bench Leatherette 3rd Row Seat Front, Manual Recline, Manual Fold Into Floor and 2 Fixed Head Restraints
- Heated Leather Steering Wheel w/Auto Tilt-Away- Front Cupholder- Rear Cupholder
- Valet Function- Proximity Key For Doors And Push Button Start
- Remote Keyless Entry w/Integrated Key Transmitter, 2 Door Curb/Courtesy, Illuminated Entry, Illuminated Ignition Switch and Panic Button
- Remote Releases -Inc: Proximity Cargo Access- HomeLink Garage Door Transmitter
- Cruise Control w/Steering Wheel Controls- Distance Pacing w/Traffic Stop-Go
- Voice Activated Dual Zone Front Automatic Air Conditioning
- Rear HVAC w/Separate Controls
- HVAC -inc: Underseat Ducts, Headliner/Pillar Ducts and Console Ducts
- Illuminated Locking Glove Box- Driver Foot Rest- Full Cloth Headliner
- Leather Gear Shifter Material- Leather Door Trim Insert
- Interior Trim -inc: Simulated Wood Instrument Panel Insert, Simulated Wood/Metal-Look Door Panel Insert, Simulated Wood Console Insert and Chrome/Metal-Look Interior Accents
- Leather Seating Surfaces- Day-Night Auto-Dimming Rearview Mirror
- Driver And Passenger Visor Vanity Mirrors w/Driver And Passenger Illumination, Driver And Passenger Auxiliary Mirror
- Full Floor Console w/Covered Storage, Mini Overhead Console w/Storage and 4 12V DC Power Outlets
- Front And Rear Map Lights- Fade-To-Off Interior Lighting- Full Carpet Floor Covering
- Carpet Floor Trim- Cargo Area Concealed Storage- Trunk/Hatch Auto-Latch
- Cargo Space Lights- Smart Device Integration
- FOB Controls -inc: Cargo Access, Windows and Remote Engine Start
- Memory Settings -inc: Door Mirrors and Steering Wheel

- NissanConnect Services Tracker System- Driver / Passenger And Rear Door Bins
- Delayed Accessory Power- Power Door Locks w/Autolock Feature
- Power 1st Row Windows w/Driver And Passenger 1-Touch Up/Down - Systems Monitor
- Trip Computer- Outside Temp Gauge- Analog Appearance
- Manual Adjustable Front Head Restraints and Manual Adjustable Rear Head Restraints
- Front Center Armrest and Rear Center Armrest w/Storage- 2 Seatback Storage Pockets
- Seats w/Leatherette Back Material- Perimeter Alarm- Engine Immobilizer- Air Filtration
- 4 12V DC Power Outlets

---

## Mechanical

- Engine: 3.5L DI V6- Transmission: XTRONIC CVT (Continuously Variable)
- 5.25 Axle Ratio- GVWR: 5,985 lbs- Transmission w/Driver Selectable Mode
- Front-Wheel Drive- 63-Amp/Hr Maintenance-Free Battery w/Run Down Protection
- 150 Amp Alternator- Class III Towing Equipment -inc: Hitch- Trailer Wiring Harness
- Gas-Pressurized Shock Absorbers- Front And Rear Anti-Roll Bars
- Electro-Hydraulic Power Assist Speed-Sensing Steering- 19.5 Gal. Fuel Tank
- Single Stainless Steel Exhaust- Strut Front Suspension w/Coil Springs
- Multi-Link Rear Suspension w/Coil Springs
- 4-Wheel Disc Brakes w/4-Wheel ABS, Front And Rear Vented Discs, Brake Assist and Hill Hold Control
- Brake Actuated Limited Slip Differential

---

Charleston Auto Sales  
[charlestonautosales.com](http://charlestonautosales.com)  
(843) 297-3211  
8261 Rivers Ave  
Charleston, SC 29406

© 2022 AutoRevo - All rights reserved. - Powered by AutoRevo