

2007 Chevrolet Silverado 1500 Work Truck

View this car on our website at paniaguaautos.com/7084479/ebrochure

paniaguaautos.com
(706)529-1919

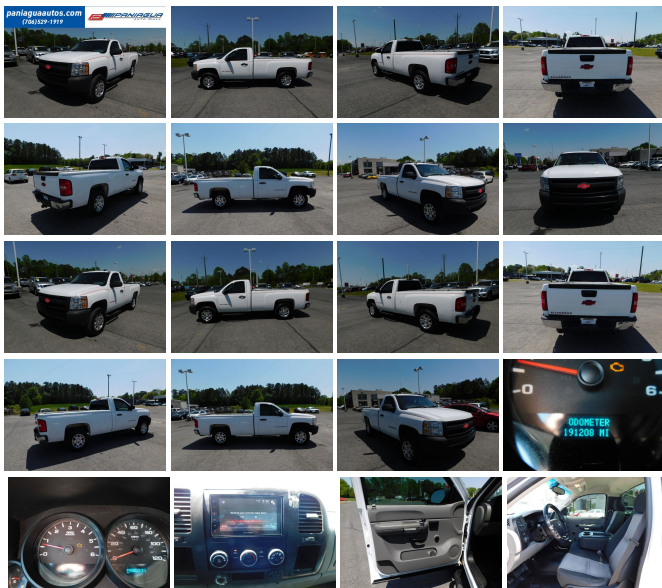


Our Price **\$7,400**



Specifications:

Year:	2007
VIN:	1GCEC14X67Z614695
Make:	Chevrolet
Stock:	7296
Model/Trim:	Silverado 1500 Work Truck
Condition:	Pre-Owned
Body:	Pickup Truck
Exterior:	White
Engine:	ENGINE, VORTEC 4.3L V6 MFI
Interior:	Black Cloth
Transmission:	AUTOMATIC
Mileage:	191,208
Drivetrain:	Rear Wheel Drive
Economy:	City 17 / Highway 21



2007 CHEVROLET SILVERADO 1500 4.3L V6 AUTOMATIC NICE
CLEAN CLOTH INTERIOR ALL POWER HURRY IN TODAY AND
CHECK OUT OUR MOST RECENT INVENTORY

2007 Chevrolet Silverado 1500 Work Truck

Paniagua Auto Mall - 706-529-1919 & 423-472-4045 - View this car on our website at paniaguaautos.com/7084479/ebrochure

Our Location :



2007 Chevrolet Silverado 1500 Work Truck

Paniagua Auto Mall - 706-529-1919& 423-472-4045 - View this car on our website at paniaguaautos.com/7084479/ebrochure

Installed Options

Interior

- Air conditioning delete, provides heater only (Requires Regular Cab models.)
- Assist handle, front passenger (Also includes rear assist handles in the headliner on Extended and Crew Cab Models.)
- Audio system feature, 4-speaker system (Requires Regular Cab models.)
- Audio system, AM/FM stereo with seek-and-scan and digital clock (Upgradeable to (U1C) AM/FM stereo with CD player.)
- Coat hooks, rear driver and passenger side - Console, overhead deluxe
- Cup holders, front (Also includes rear cupholders on Extended and Crew Cab models.)
- Driver Information Center with odometer, trip odometer and message center (monitors numerous systems depending on vehicle equipment level including low fuel, turn signal "on", transmission temperature and oil change notification) (Driver Information Center controls are operated through the trip button unless (UK3) steering wheel mounted audio controls is ordered.)
- Floor covering, Black rubberized-vinyl
- Instrumentation, analog with speedometer, odometer, fuel level, engine temperature, and tachometer
- Lighting, interior with dome and reading lights, illuminated entry feature and backlit instrument panel switches
- Mirror, inside rearview manual day/night
- OnStar, 1-year of Safe and Sound plan. Includes Automatic Notification of Air Bag Deployment, Stolen Vehicle Location Assistance, Emergency Services, Roadside Assistance, Remote Door Unlock, OnStar Vehicle Diagnostics, Hands-Free Calling, AccidentAssist and Remote Horn & Lights (OnStar services require vehicle electrical system (including battery), wireless service and GPS satellite signals to be available and operating for features to function properly. OnStar acts as a link to existing emergency service providers. OnStar Vehicle Diagnostics available on most 2004 MY and newer GM vehicles. Diagnostic capability varies by model. Visit onstar.com for system limitations and details. If the order type is FDR, (UE0) OnStar delete will be forced on. Not available with a ship-to of Puerto Rico or the Virgin Islands. Remote Door Unlock requires (AU3) Power door locks.)
- Power outlets, 2 auxiliary instrument panel-mounted with covers, 12-volt
- Seat trim, Dark Titanium vinyl (Requires (BG9) Black rubberized vinyl floor covering.)
- Seats, front 40/20/40 split-bench. 3-passenger, driver and front passenger manual reclining

- with outboard head restraints and center fold-down armrest with storage
- Steering column, Tilt-Wheel, adjustable with brake/transmission shift interlock
- Steering wheel, includes theft-deterrent locking feature
- Tire Pressure Monitoring System (does not apply to spare tire)
- Visors, driver and front passenger, sliding, with clip and passenger side vanity mirror with cover, Opal Gray-colored
- Warning tones, headlamp on, key-in-ignition, driver and passenger buckle up reminder and turn signal on

Exterior

- Air dam, Black- Bumper, front Black (Includes Black bumper end caps.)
- Bumper, rear chrome, step-style with pad
- Daytime Running Lamps, with automatic exterior lamp control- Door handles, Black
- Glass, Solar-Ray light-tinted, all windows- Grille, Black surround
- Headlamps, dual halogen composite with automatic exterior lamp control and flash-to-pass feature
- Lamps, dual cargo area lamps- Mirrors, outside manual, Black, manual-folding
- Paint, solid- Wipers, front intermittent wet-arm with pulse washers

Safety

- Air conditioning delete, provides heater only (Requires Regular Cab models.)
- Assist handle, front passenger (Also includes rear assist handles in the headliner on Extended and Crew Cab Models.)
- Audio system feature, 4-speaker system (Requires Regular Cab models.)
- Audio system, AM/FM stereo with seek-and-scan and digital clock (Upgradeable to (U1C) AM/FM stereo with CD player.)
- Coat hooks, rear driver and passenger side- Console, overhead deluxe
- Cup holders, front (Also includes rear cupholders on Extended and Crew Cab models.)
- Driver Information Center with odometer, trip odometer and message center (monitors numerous systems depending on vehicle equipment level including low fuel, turn signal "on", transmission temperature and oil change notification) (Driver Information Center controls are operated through the trip button unless (UK3) steering wheel mounted audio controls is ordered.)
- Floor covering, Black rubberized-vinyl
- Instrumentation, analog with speedometer, odometer, fuel level, engine temperature, and tachometer
- Lighting, interior with dome and reading lights, illuminated entry feature and backlit instrument panel switches
- Mirror, inside rearview manual day/night
- OnStar, 1-year of Safe and Sound plan. Includes Automatic Notification of Air Bag Deployment, Stolen Vehicle Location Assistance, Emergency Services, Roadside Assistance, Remote Door Unlock, OnStar Vehicle Diagnostics, Hands-Free Calling, AccidentAssist and Remote Horn & Lights (OnStar services require vehicle electrical system (including battery), wireless service and GPS satellite signals to be available and operating for features to function properly. OnStar acts as a link to existing emergency service providers. OnStar Vehicle Diagnostics available on most 2004 MY and newer GM vehicles. Diagnostic capability varies by model. Visit onstar.com for system limitations and details. If the order type is FDR, (UE0) OnStar delete will be forced on. Not available with a ship-to of Puerto Rico or the Virgin Islands. Remote Door Unlock requires (AU3) Power door locks.)
- Power outlets, 2 auxiliary instrument panel-mounted with covers, 12-volt
- Seat trim, Dark Titanium vinyl (Requires (BG9) Black rubberized vinyl floor covering.)
- Seats, front 40/20/40 split-bench, 3-passenger, driver and front passenger manual reclining with outboard head restraints and center fold-down armrest with storage
- Steering column, Tilt-Wheel, adjustable with brake/transmission shift interlock
- Steering wheel, includes theft-deterrent locking feature
- Tire Pressure Monitoring System (does not apply to spare tire)
- Visors, driver and front passenger, sliding, with clip and passenger side vanity mirror with cover, Opal Gray-colored
- Warning tones, headlamp on, key-in-ignition, driver and passenger buckle up reminder and turn signal on

Mechanical

- Alternator, 145 amps
- Battery, heavy-duty 600 cold-cranking amps, maintenance-free with rundown protection and retained accessory power
- Brakes, 4-wheel antilock, front disc/rear drum
- Engine, Vortec 4.3L V6 MFI (195 hp [145.4 kW] @ 4600 rpm, 260 lb-ft of torque [351.0 N-m] @ 2800 rpm) (Requires C*10*03, CC10553 or CC10753 models. Not available with (VYU) Snow Plow Prep Package or (Z82) heavy-duty trailering equipment.)
- Exhaust, aluminized stainless-steel muffler and tailpipe- Frame, hydroformed
- GVWR, 6400 lbs. (2903 kg) (Standard on C*10703, C*10903, CC10553, and CC10753 models.)
- Pickup box, Fleetside- Rear wheel drive- Steering, power, rack-and-pinion
- Suspension Package, Solid Smooth Ride, includes 35 mm piston twin tube shocks and 32mm front stabilizer bar

- Suspension, front independent, coil over shock
- Suspension, rear 2-stage multi-leaf springs, semi-elliptic
- Tire carrier, outside spare, winch-type mounted under frame at rear
- Tires, P245/70R17 all-season, blackwall (Requires 2WD models.)
- Transmission, 4-speed automatic, electronically controlled with overdrive and tow/haul mode
- Wheel, 17" (43.2 cm) steel spare (spare wheel will not cosmetically match the other 4 wheels)
- Wheels, 4 - 17" x 7.5" (43.2 cm x 19.1 cm) steel, 6-lug painted, includes painted center caps (spare wheel will not cosmetically match the other 4 wheels)

Option Packages

Factory Installed Packages

- _____
ENGINE, VORTEC 4.3L V6 MFI
(195 hp [145.4 kW] @ 4600 rpm, -\$945
260 lb-ft of torque [351.0 N-m]
@ 2800 rpm)

- _____
Option Packages Total
 -\$945

We sale used vehicles as is no warranty. We sale extended warranties ask one of our sales rep. for details.

Paniagua Auto Mall

paniaguaautos.com

706-529-1919& 423-472-4045

1776 E. Walnut Ave

Dalton, Georgia 30721

© 2023 AutoRevo - All rights reserved. - Powered by AutoRevo