

# 2019 Ford Expedition Max Platinum

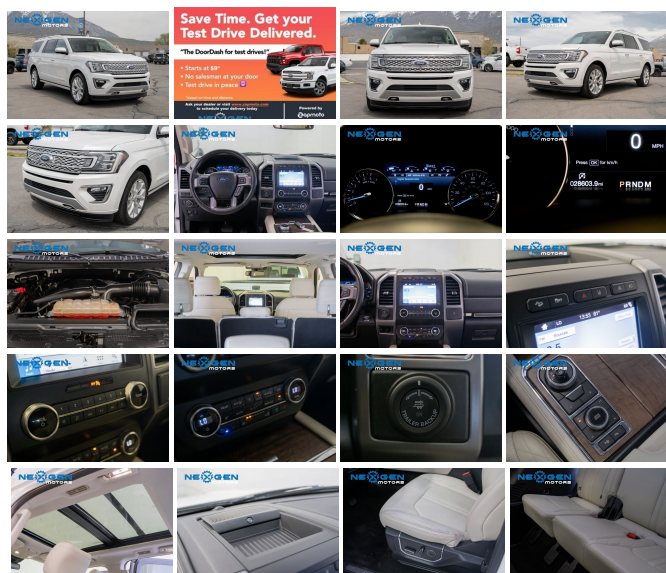
View this car on our website at [nexgenmotorsutah.com/7083685/ebrochure](http://nexgenmotorsutah.com/7083685/ebrochure)



Our Price **\$55,000**

## Specifications:

**Year:** 2019  
**VIN:** 1FMJK1MT5KEA35286  
**Make:** Ford  
**Stock:** B5286M  
**Model/Trim:** Expedition Max Platinum  
**Condition:** Pre-Owned  
**Body:** SUV  
**Exterior:** White Platinum  
**Engine:** ENGINE: 3.5L ECOBOOST V6  
**Interior:** Medium Soft Ceramic Leather  
**Mileage:** 28,590  
**Drivetrain:** 4 Wheel Drive  
**Economy:** City 16 / Highway 21



## Our Location :



2019 Ford Expedition Max Platinum

Nexgen Motors - 801-874-3747 - View this car on our website at [nexgenmotorsutah.com/7083685/ebrochure](http://nexgenmotorsutah.com/7083685/ebrochure)

## Installed Options

### Interior

- Driver Seat- Passenger Seat
- 40-20-40 Folding Split-Bench Front Facing Heated Manual Reclining Fold Forward Seatback Leather Rear Seat w/Manual Fore/Aft
- Power Tilt/Telescoping Steering Column
- Gauges -inc: Speedometer, Odometer, Voltmeter, Oil Pressure, Engine Coolant Temp, Tachometer, Trip Odometer and Trip Computer
- Power Rear Windows and Fixed 3rd Row Windows
- Fixed 60-40 Split-Bench Vinyl 3rd Row Seat Front, Power Recline, Power Fold Into Floor and 3 Fixed Head Restraints
- Heated Leather Steering Wheel- Front Cupholder- Rear Cupholder
- Front Cigar Lighter(s)- Compass- Keypad
- Remote Keyless Entry w/Integrated Key Transmitter, Illuminated Entry and Panic Button
- Proximity Key For Doors And Push Button Start
- Remote Releases -Inc: Proximity Cargo Access and Keyfob Rear Window
- Garage Door Transmitter- Cruise Control w/Steering Wheel Controls
- Distance Pacing w/Traffic Stop-Go- Rear HVAC w/Separate Controls
- HVAC -inc: Underseat Ducts, Auxiliary Rear Heater and Headliner/Pillar Ducts
- Dual Zone Front Automatic Air Conditioning- Locking Glove Box- Full Cloth Headliner
- Metal-Look Gear Shifter Material- Leather Door Trim Insert
- Interior Trim -inc: Genuine Wood/Metal-Look Instrument Panel Insert, Genuine Wood/Metal-Look Door Panel Insert, Genuine Wood/Metal-Look Console Insert and Chrome Interior Accents
- Heated & Cooled Perforated Leather Fr Bucket Seats -inc: 8-passenger seating, multicontour seats w/Active Motion, luxury leather trim w/perforation and quilted bolsters, 10-way power driver and passenger seats w/power recline, 2-way power lumbar and pecan stitching
- Day-Night Auto-Dimming Rearview Mirror
- Driver And Passenger Visor Vanity Mirrors w/Driver And Passenger Illumination, Driver And Passenger Auxiliary Mirror
- Full Floor Console w/Covered Storage, Mini Overhead Console w/Storage, 4 12V DC Power Outlets and 1 120V AC Power Outlet

- Front And Rear Map Lights- Fade-To-Off Interior Lighting
- Full Carpet Floor Covering -inc: Carpet Front And Rear Floor Mats- Carpet Floor Trim
- Cargo Net- Trunk/Hatch Auto-Latch- Cargo Space Lights
- Memory Settings -inc: Driver Seat, Door Mirrors and Pedals
- FOB Controls -inc: Remote Engine Start- Smart Device Remote Engine Start
- Tracker System- Integrated Navigation System w/Voice Activation
- Dashboard Storage, Driver / Passenger And Rear Door Bins
- Power 1st Row Windows w/Driver 1-Touch Up/Down- Delayed Accessory Power
- Power Door Locks w/Autolock Feature- Power Adjustable Pedals- Systems Monitor
- Trip Computer- Outside Temp Gauge- Digital/Analog Appearance
- Manual Adjustable Front Head Restraints and Fixed Rear Head Restraints
- Front Center Armrest- Seats w/Leatherette Back Material- 2 Seatback Storage Pockets
- Perimeter Alarm- Securilock Anti-Theft Ignition (pats) Engine Immobilizer
- 4 12V DC Power Outlets- Air Filtration
- 4 12V DC Power Outlets and 1 120V AC Power Outlet

## Exterior

- Tires: P285/45R22 AS BSW- Steel Spare Wheel
- Full-Size Spare Tire Stored Underbody w/Crankdown- Clearcoat Paint
- Express Open Sliding And Tilting Glass 1st And 2nd Row Sunroof w/Power Sunshade
- Body-Colored Rear Step Bumper w/Body-Colored Rub Strip/Fascia Accent
- Body-Colored Front Bumper w/Body-Colored Rub Strip/Fascia Accent and 2 Tow Hooks
- Black Side Windows Trim and Black Front Windshield Trim
- Body-Colored Bodyside Cladding and Body-Colored Fender Flares
- Metal-Look Door Handles
- Metal-Look Power Heated Side Mirrors w/Driver Auto Dimming, Power Folding and Turn Signal Indicator
- Flip-Up Rear Window w/Fixed Interval Wiper, Heated Wiper Park and Defroster
- Deep Tinted Glass
- Speed Sensitive Rain Detecting Variable Intermittent Wipers w/Heated Wiper Park
- Galvanized Steel/Aluminum Panels- Power Running Boards- Grille w/Chrome Bar
- Power Liftgate Rear Cargo Access
- Tailgate/Rear Door Lock Included w/Power Door Locks- Roof Rack- Front Fog Lamps
- Perimeter/Approach Lights- LED Brakelights
- Auto On/Off Aero-Composite Led Low/High Beam Auto High-Beam Daytime Running Lights Preference Setting Headlamps w/Delay-Off
- Headlights-Automatic Highbeams
- Wheels: 22" Polished Aluminum -inc: Continuously Controlled Damping (CCD)

## Safety

- Driver Seat- Passenger Seat
- 40-20-40 Folding Split-Bench Front Facing Heated Manual Reclining Fold Forward Seatback Leather Rear Seat w/Manual Fore/Aft
- Power Tilt/Telescoping Steering Column
- Gauges -inc: Speedometer, Odometer, Voltmeter, Oil Pressure, Engine Coolant Temp, Tachometer, Trip Odometer and Trip Computer
- Power Rear Windows and Fixed 3rd Row Windows
- Fixed 60-40 Split-Bench Vinyl 3rd Row Seat Front, Power Recline, Power Fold Into Floor and 3 Fixed Head Restraints
- Heated Leather Steering Wheel- Front Cupholder- Rear Cupholder
- Front Cigar Lighter(s)- Compass- Keypad
- Remote Keyless Entry w/Integrated Key Transmitter, Illuminated Entry and Panic Button
- Proximity Key For Doors And Push Button Start
- Remote Releases -Inc: Proximity Cargo Access and Keyfob Rear Window
- Garage Door Transmitter- Cruise Control w/Steering Wheel Controls
- Distance Pacing w/Traffic Stop-Go- Rear HVAC w/Separate Controls
- HVAC -inc: Underseat Ducts, Auxiliary Rear Heater and Headliner/Pillar Ducts
- Dual Zone Front Automatic Air Conditioning- Locking Glove Box- Full Cloth Headliner
- Metal-Look Gear Shifter Material- Leather Door Trim Insert
- Interior Trim -inc: Genuine Wood/Metal-Look Instrument Panel Insert, Genuine Wood/Metal-Look Door Panel Insert, Genuine Wood/Metal-Look Console Insert and Chrome Interior Accents
- Heated & Cooled Perforated Leather Fr Bucket Seats -inc: 8-passenger seating, multicontour seats w/Active Motion, luxury leather trim w/perforation and quilted bolsters, 10-way power driver and passenger seats w/power recline, 2-way power lumbar and pecan stitching
- Day-Night Auto-Dimming Rearview Mirror
- Driver And Passenger Visor Vanity Mirrors w/Driver And Passenger Illumination, Driver And Passenger Auxiliary Mirror
- Full Floor Console w/Covered Storage, Mini Overhead Console w/Storage, 4 12V DC Power Outlets and 1 120V AC Power Outlet
- Front And Rear Map Lights- Fade-To-Off Interior Lighting

- Full Carpet Floor Covering -inc: Carpet Front And Rear Floor Mats - Carpet Floor Trim
- Cargo Net- Trunk/Hatch Auto-Latch- Cargo Space Lights
- Memory Settings -inc: Driver Seat, Door Mirrors and Pedals
- FOB Controls -inc: Remote Engine Start- Smart Device Remote Engine Start
- Tracker System- Integrated Navigation System w/Voice Activation
- Dashboard Storage, Driver / Passenger And Rear Door Bins
- Power 1st Row Windows w/Driver 1-Touch Up/Down- Delayed Accessory Power
- Power Door Locks w/Autolock Feature- Power Adjustable Pedals- Systems Monitor
- Trip Computer- Outside Temp Gauge- Digital/Analog Appearance
- Manual Adjustable Front Head Restraints and Fixed Rear Head Restraints
- Front Center Armrest- Seats w/Leatherette Back Material- 2 Seatback Storage Pockets
- Perimeter Alarm- Securilock Anti-Theft Ignition (pats) Engine Immobilizer
- 4 12V DC Power Outlets- Air Filtration
- 4 12V DC Power Outlets and 1 120V AC Power Outlet

## Mechanical

- 4-Wheel Disc Brakes w/4-Wheel ABS, Front And Rear Vented Discs, Brake Assist, Hill Descent Control, Hill Hold Control and Electric Parking Brake
- Multi-Link Rear Suspension w/Coil Springs
- Double Wishbone Front Suspension w/Coil Springs- Auto Locking Hubs
- Single Stainless Steel Exhaust- 28.3 Gal. Fuel Tank
- Electric Power-Assist Speed-Sensing Steering- Adaptive Suspension
- Front And Rear Anti-Roll Bars- Gas-Pressurized Shock Absorbers
- 1690# Maximum Payload- Trailer Wiring Harness
- Class IV Towing Equipment -inc: Hitch and Trailer Sway Control
- 78-Amp/Hr 675CCA Maintenance-Free Battery w/Run Down Protection
- 150 Amp Alternator- Part And Full-Time Four-Wheel Drive- Electronic Transfer Case
- Transmission w/Driver Selectable Mode and Oil Cooler- 50 States Emissions System
- GVWR: 7,550 lbs- 3.31 Axle Ratio- Transmission: 10-Speed Automatic w/SelectShift
- Engine: 3.5L EcoBoost V6 -inc: auto start-stop technology

## Option Packages

### Factory Installed Packages

-  
ENGINE: 3.5L ECOBOOST V6  
-inc: auto start-stop technology

Nexgen Motors

[nexgenmotorsutah.com](http://nexgenmotorsutah.com)

801-874-3747

986 N State St.

Orem, UT 84057

© 2022 AutoRevo - All rights reserved. - Powered by AutoRevo