

2004 Chevrolet Silverado 2500HD Diesel 4x4 LT

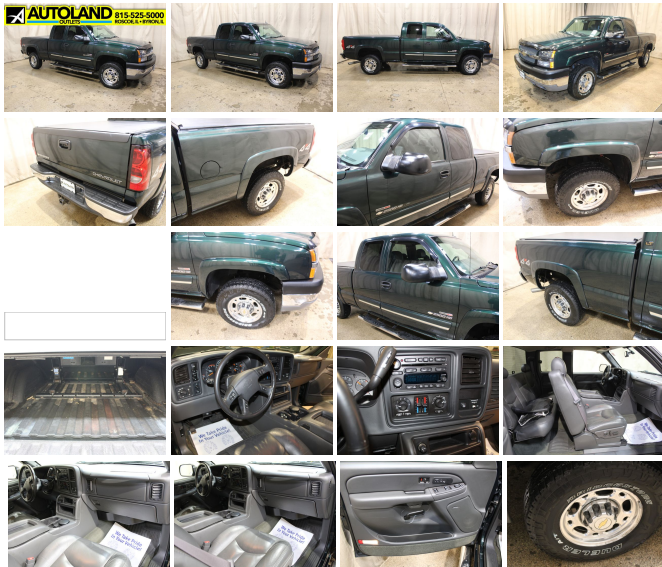
View this car on our website at autolandoutlets.com/7082126/ebrochure



Our Price **\$25,846**

Specifications:

Year:	2004
VIN:	1GCHK29154E137643
Make:	Chevrolet
Stock:	11204
Model/Trim:	Silverado 2500HD Diesel 4x4 LT
Condition:	Pre-Owned
Body:	Pickup Truck
Exterior:	Dark Green Metallic
Engine:	ENGINE, DURAMAX 6600 TURBO DIESEL V8
Interior:	Tan Leather
Transmission:	TRANSMISSION, ALLISON 1000 5-SPEED AUTOMATIC, ELECTRONICALLY CONTROLLED WITH OVERDRIVE, TOW/HAUL MODE,
Mileage:	118,070
Drivetrain:	4 Wheel Drive



Just arrived!! Vehicle has been detailed and inspected runs and drives great!! Autoland Outlets is proud to offer this 2004 Chevrolet Silverado 2500 Ext.Cab 4x4 Diesel options include Heavy Duty Power Package, Snow Plow Prep Package, Heavy duty

Trailering Package,3.73 Rear Ratio,Leather Seats. Call Autoland Outlets at 1- 815-525-5000

Many of our trucks are Rust Free Southern Units!!! We Buy-Sell-Trade call us for Availability and Pricing 815-525-5000.Dealer Shall in no way be held liable for any errors or omissions to be found on these webpages. All prices are plus any applicable state taxes and service fees. We will do our best to keep all the information current and accurate,however the dealership should be contacted for final pricing and availability. Autoland Outlets is the midwest Premier Truck Store. Over 250 Trucks in Stock!! Over 150 are Diesels! 3/4 Tons, 1 Tons, Regular, Extended and Crew Cabs. Plus: Dump Trucks, Utility Trucks, and much more! Many New Trucks Arriving Daily!!! Thousands of Satisfied Customers! Over 25 Years in Business. Updated Daily 888-240-8674 ILLINOIS WARRANTY MAY APPLY CALL DEALERSHIP FOR DETAILS

2004 Chevrolet Silverado 2500HD Diesel 4x4 LT

Autoland Outlets - 877-319-6060 - View this car on our website at autolandoutlets.com/7082126/ebrochure

Our Location :



2004 Chevrolet Silverado 2500HD Diesel 4x4 LT

Autoland Outlets - 877-319-6060 - View this car on our website at autolandoutlets.com/7082126/ebrochure

Installed Options

Interior

- Air conditioning, dual-zone, automatic, individual climate settings for driver and right front passenger (Must be substituted with (CJ3) Air conditioning, dual-zone, manual when (VYU) Snow Plow Prep Package is ordered.)
- Assist handle, front passenger (Also includes rear outboard passenger assist on Extended and Crew Cab Models.)
- Cigarette lighter, on instrument panel
- Coat hook, driver side (Also includes passenger side coat hook on Extended and Crew Cab Models.)
- Console, floor, includes storage compartment and dual cupholders
- Console, overhead mini, includes map lights
- Cruise control, electronic with set and resume speed, includes telltale in instrument panel cluster
- Cupholders, front (Also includes rear cupholders on Extended and Crew Cab Models.)
- Defogger, rear-window, electric (Deleted when (A28) Window, rear sliding is ordered)
- Door locks, power
- Driver Information Center, includes trip odometer and message center (monitors numerous systems depending on vehicle equipment level including low fuel, turn signal "on", transmission temperature, and oil change notification) (With (UK3) Sound system feature, steering wheel mounted radio controls, includes trip and fuel information selections and programmable personalization features.)
- Floor covering, color-keyed carpeting and rubberized vinyl floor mats
- Instrumentation, analog, includes speedometer, odometer with trip odometer, fuel level, voltmeter, engine temperature, oil pressure and tachometer
- Keyless entry, remote, includes 2 transmitters, panic button and content theft alarm
- Lighting, dome lamp, reading, courtesy, illuminated entry feature, backlit instrument panel switches and door handle-activated illuminated entry
- Mirror, inside rearview, electrochromic (light-sensitive auto dimming), 8-point compass and outside temperature indicator
- OnStar, 1-year Safe and Sound Service, includes automatic notification of air bag deployment, emergency services, roadside assistance, stolen vehicle tracking, AccidentAssist, remote door unlock remote diagnostics, online concierge and remote horn and lights. Drivers can also opt for other available OnStar services, including making and receiving voice-activated, hands-free phone calls with Personal Calling and getting location-based traffic and weather reports with Virtual Advisor
- Power outlets, auxiliary, covered, 2 dash-mounted, 12-volt
- Seat adjuster, power, driver 6-way (With (AN3) Seats, front power reclining full-feature buckets, includes 10-way adjuster)
- Seat adjuster, power, front passenger 10-way (Included and only available with (AN3) Seats, front power reclining full-feature buckets.)
- Seat trim, Leather (Not available on Regular Cab Models. - Extended Cabs includes front leather seating surfaces with rear vinyl bench. - Crew Cab includes front and rear leather appointed seating surfaces)
- Seats, front power reclining full-feature buckets, includes adjustable head restraints, floor console, driver and passenger power lumbar, driver and front passenger 10-way power adjustable, dual inboard armrests, heated driver and passenger cushion and back, 2-position driver-side memory and storage pockets
- Seats, rear bench, folding, 3-passenger (includes child seat top tether anchor) (Not available with Regular Cab Models.)
- Sound system feature, steering wheel mounted radio controls, Radio and Driver Information Center (DIC). Provides access to enhanced Driver Information Center (DIC) features and information.
- Sound system, ETR AM/FM stereo with 6-disc CD changer, includes seek-and-scan, digital clock, auto-tone control, speed-compensated volume, TheftLock, Radio Data System (RDS), and Bose speaker system (includes 6 speakers, Bose amplifier and Bose Subwoofer) (May be substituted with (UB1) Sound system, ETR AM/FM stereo with CD and cassette player.)
- Steering column, Tilt-Wheel, adjustable, includes brake/transmission shift interlock
- Steering wheel, leather-wrapped rim, Black, steel sleeve, includes theft-deterrent locking feature
- Theft-deterrent system, PASSlock II
- Visors, padded, Shale-colored, driver and passenger side with cloth trim, extenders, pocket on driver side and vanity mirror on passenger side
- Warning tones, headlamp on, key-in-ignition, driver and passenger seat belt reminder, turn signal on
- Windows, power, includes driver express-down

Exterior

- Air dam, Gray- Bumper, front, chrome, with Gray lower
- Bumper, rear, chrome step, includes pad (Not available with (ZW9) Pickup bed, delete)
- Daytime running lamps, includes automatic exterior lamp control
- Fog lamps, front, halogen
- Glass, Solar-Ray deep tinted (all windows except light tinted glass on windshield) (With Extended Cab Models, includes rear window and rear quarter windows. - With (C49) Defogger, rear-window, electric, includes light-tinted rear)
- Grille, color-keyed surround, with chrome accent bar
- Headlamps, dual halogen composite, includes flash-to-pass feature and automatic lamp control
- Lamps, dual cargo area lamps

- Mirrors, outside rearview, power folding, power, heated, Black, driver side electrochromic (light-sensitive auto-dimming), turn signal in glass, and curb-tilt, memory feature (May be substituted with (DPF) Mirrors, outside rearview, power, heated, camper-style. Includes memory feature.)
- Moldings, bodyside (Moldings are color-keyed.) (Not available with (ZW9) Pickup bed delete)
- Paint, solid
- Wheel flares (Refer to Color and Trim chart for compatibility. Front only when (ZW9) Pickup bed delete is ordered)
- Windows, rear quarter swing-out (Standard with Extended Cab Models only.)
- Wipers, intermittent, front, wet-arm with pulse washers

Safety

- Air conditioning, dual-zone, automatic, individual climate settings for driver and right front passenger (Must be substituted with (CJ3) Air conditioning, dual-zone, manual when (VYU) Snow Plow Prep Package is ordered.)
- Assist handle, front passenger (Also includes rear outboard passenger assist on Extended and Crew Cab Models.)
- Cigarette lighter, on instrument panel
- Coat hook, driver side (Also includes passenger side coat hook on Extended and Crew Cab Models.)
- Console, floor, includes storage compartment and dual cupholders
- Console, overhead mini, includes map lights
- Cruise control, electronic with set and resume speed, includes telltale in instrument panel cluster
- Cupholders, front (Also includes rear cupholders on Extended and Crew Cab Models.)
- Defogger, rear-window, electric (Deleted when (A28) Window, rear sliding is ordered)
- Door locks, power
- Driver Information Center, includes trip odometer and message center (monitors numerous systems depending on vehicle equipment level including low fuel, turn signal "on", transmission temperature, and oil change notification) (With (UK3) Sound system feature, steering wheel mounted radio controls, includes trip and fuel information selections and programmable personalization features.)
- Floor covering, color-keyed carpeting and rubberized vinyl floor mats
- Instrumentation, analog, includes speedometer, odometer with trip odometer, fuel level, voltmeter, engine temperature, oil pressure and tachometer
- Keyless entry, remote, includes 2 transmitters, panic button and content theft alarm
- Lighting, dome lamp, reading, courtesy, illuminated entry feature, backlit instrument panel switches and door handle-activated illuminated entry
- Mirror, inside rearview, electrochromic (light-sensitive auto dimming), 8-point compass and outside temperature indicator
- OnStar, 1-year Safe and Sound Service, includes automatic notification of air bag deployment, emergency services, roadside assistance, stolen vehicle tracking, AccidentAssist, remote door unlock remote diagnostics, online concierge and remote horn and lights. Drivers can also opt for other available OnStar services, including making and receiving voice-activated, hands-free phone calls with Personal Calling and getting location-based traffic and weather reports with Virtual Advisor
- Power outlets, auxiliary, covered, 2 dash-mounted, 12-volt
- Seat adjuster, power, driver 6-way (With (AN3) Seats, front power reclining full-feature buckets, includes 10-way adjuster)
- Seat adjuster, power, front passenger 10-way (Included and only available with (AN3) Seats, front power reclining full-feature buckets.)
- Seat trim, Leather (Not available on Regular Cab Models. - Extended Cabs includes front leather seating surfaces with rear vinyl bench. - Crew Cab includes front and rear leather appointed seating surfaces)
- Seats, front power reclining full-feature buckets, includes adjustable head restraints, floor console, driver and passenger power lumbar, driver and front passenger 10-way power adjustable, dual inboard armrests, heated driver and passenger cushion and back, 2-position driver-side memory and storage pockets
- Seats, rear bench, folding, 3-passenger (includes child seat top tether anchor) (Not available with Regular Cab Models.)
- Sound system feature, steering wheel mounted radio controls, Radio and Driver Information Center (DIC). Provides access to enhanced Driver Information Center (DIC) features and information.
- Sound system, ETR AM/FM stereo with 6-disc CD changer, includes seek-and-scan, digital clock, auto-tone control, speed-compensated volume, TheftLock, Radio Data System (RDS), and Bose speaker system (includes 6 speakers, Bose amplifier and Bose Subwoofer) (May be substituted with (UB1) Sound system, ETR AM/FM stereo with CD and cassette player.)
- Steering column, Tilt-Wheel, adjustable, includes brake/transmission shift interlock
- Steering wheel, leather-wrapped rim, Black, steel sleeve, includes theft-deterrent locking feature
- Theft-deterrent system, PASSlock II
- Visors, padded, Shale-colored, driver and passenger side with cloth trim, extenders, pocket on driver side and vanity mirror on passenger side
- Warning tones, headlamp on, key-in-ignition, driver and passenger seat belt reminder, turn signal on
- Windows, power, includes driver express-down

Mechanical

- Alternator, 105 amps
- Battery, heavy-duty, 600 cold-cranking amps, includes rundown protection and retained accessory power (Not standard with (LLY) Engine, Duramax 6600 Turbo Diesel V8.)
- Brakes, 4-wheel antilock, 4-wheel disc
- Cooling, external engine oil cooler, heavy-duty air-to-oil, integral to driver side of radiator tank
- Cooling, external transmission oil cooler, auxiliary, heavy-duty air-to-oil (Included and only available with (MT1) Transmission, 4-speed automatic, heavy-duty. - Included and only available with (M74) Transmission, Allison 1000 5-speed automatic)
- Cooling, internal transmission oil cooler, water-to-oil, integral to driver side of radiator tank (Included and only available with (MT1) Transmission 4-speed automatic, heavy-duty or (M74) Transmission, Allison 1000 5-speed automatic.)
- Engine, Vortec 6000 V8 SFI (300 HP [223.8 kW] @ 4400 rpm, 360 lb.-ft [486.6 N-m] @ 4000 rpm)
- Exhaust, aluminized stainless-steel muffler and tailpipe- Four wheel drive
- Frame, ladder-type
- GVWR, 9200 lbs. (4173 kg) (Must specify on CC25903, CK25753, and C*25743 Models.)
- Pickup bed, Fleetside box
- Rear axle, 4.10 ratio (Refer to Engine/Axle Chart for availability.)
- Recovery hooks, 2 front, frame-mounted- Steering, power
- Suspension Package, Handling/Trailer, heavy-duty
- Suspension, front, independent torsion bar, and stabilizer bar
- Suspension, rear, semi-elliptic 2-stage multi-leaf springs
- Tire carrier, outside spare, winch-type mounted under frame at rear
- Tires, LT245/75R16E, all-season, blackwall (Includes 5 tires with (E63) Pickup bed, Fleetside box. - Includes 4 tires with (ZW9) Pickup bed, delete.)
- Tools, mechanical jack and wheel wrench, spare tire assist hook, floor-mounted in back of cab
- Transfer case, electronic shift, includes push-button controls (Requires 4WD Models. - Requires (MT1) Transmission, 4-speed automatic, heavy-duty or (M74) Transmission, Allison 1000 5-speed automatic.)
- Transmission, 4-speed automatic, heavy-duty, electronically controlled with overdrive, tow/haul mode and (KNP) Cooling, external transmission oil cooler (Requires (LQ4) Engine, Vortec 6000 V8 SFI.)
- Wheels, 4-16" x 6.5" (40.6 cm x 16.5 cm) 8-lug polished forged aluminum chrome center caps and steel spare

Option Packages

Factory Installed Packages

ENGINE, DURAMAX 6600 TURBO DIESEL V8
 (300 HP [223.8 kW] @ 3100 rpm,
 520 lb.-ft. [702.0 N-m] @ 1800 rpm)

TRANSMISSION, ALLISON 1000 5-SPEED AUTOMATIC, ELECTRONICALLY CONTROLLED WITH OVERDRIVE, TOW/HAUL MODE,

(KNP) Cooling, external transmission oil cooler and electronic engine grade braking \$1,200

AIR CLEANER, HIGH-CAPACITY
 (Included with (LLY) Engine, Duramax 6600 Turbo Diesel V8. -Included with (Z62) Trailering equipment, heavy-duty. -Included with (VYU) Snow plow prep package) \$25

AIR CONDITIONING, DUAL-ZONE, MANUAL, INDIVIDUAL CLIMATE SETTINGS FOR DRIVER AND RIGHT FRONT PASSENGER

-\$195

BATTERY, HEAVY-DUTY DUAL, 770 COLD-CRANKING AMPS, includes rundown protection and retained accessory power

COOLING, EXTERNAL TRANSMISSION
OIL COOLER, AUXILIARY, HEAVY-
DUTY, AIR-TO-OIL

ENGINE BLOCK HEATER
(Included with (LLY) Engine,
Duramax 6600 Turbo Diesel
V8) \$35

HEAVY-DUTY POWER PACKAGE,
includes (LLY) Engine, Duramax
6600 Turbo Diesel, (M74)
Transmission, Allison 1000 5-
speed automatic, and (G80)
Differential, locking, heavy-
duty, rear \$6,805

MIRRORS, OUTSIDE REARVIEW,
POWER, HEATED, CAMPER-STYLE,
includes power extending arms
and turn signal indicators \$55

SKID PLATE PACKAGE,
includes aluminum front
underbody shield starting
behind front bumper and
running to 1st cross-member,
protecting front underbody, oil
pan, differential case and
transfer case, frame-mounted
shields \$95

SNOW PLOW PREP PACKAGE,
includes 10-amp power for backup
and roof emergency light, 145-
amp alternator, high-flow front
bumper, forward lamp wiring
harness, 1.65" (42 mm) access
hole with grommet in front of
dash panel, mounting location
for snow plow controls,
instrument panel jumper wiring
harness for electric trailer brake
controller, includes (NZZ) Skid
Plate Package and (K47) Air
cleaner, high capacity. \$310

TRAILERING EQUIPMENT, HEAVY-
DUTY,
includes trailering hitch platform,
7-wire harness (harness
includes wires for: park lamps,
backup lamps, right turn, left
turn, electric brake lead, battery
and ground) with independent
fused trailering circuits mated
to a 7-way sealed connector,
7-way to 4-way trailer adapter,
instrument panel jumper wiring
harness for electric trailer brake
controller, and 1-way sealed
connector for center high-
mounted stop/brake lamp. Also
includes (K47) Air cleaner, high
capacity \$235

REAR AXLE, 3.73 RATIO

DIFFERENTIAL, LOCKING, HEAVY-
DUTY, REAR \$295

GVWR, 9200 LBS. (4173 kg)

PAINT, SOLID

PREFERRED EQUIPMENT GROUP
Includes Standard Equipment

SOUND SYSTEM, ETR AM/FM STEREO

WITH 6-DISC CD CHANGER,

includes seek-and-scan, digital clock, auto-tone control, speed-compensated volume, TheftLock, Radio Data System (RDS), and Bose speaker system (includes 6-speakers, Bose amplifier and Bose Subwoofer)

SEAT TRIM, LEATHER

-Extended Cab includes front leather seating surfaces with rear vinyl bench. -Crew Cab includes front and rear leather appointed seating surfaces)

SEATS, FRONT POWER RECLINING FULL-FEATURE BUCKETS,

includes adjustable head restraints, floor console, driver and passenger power lumbar, driver and front passenger 10-way power adjustable, dual inboard armrests, heated driver and passenger cushion and back, 2-position driver-side memory and storage pockets

TIRES, LT245/75R16E, ON-/OFF-ROAD, BLACKWALL

\$56

Option Packages Total

\$8,916

Autoland Outlets

autolandoutlets.com

877-319-6060

13156 Love Rd

Roscoe, IL 61073

© 2022 AutoRevo - All rights reserved. - Powered by AutoRevo