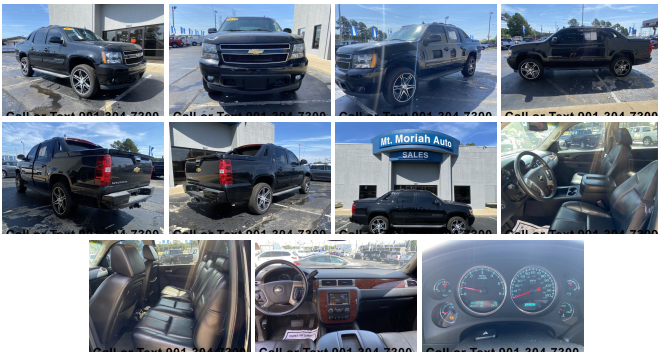


2013 Chevrolet Black Diamond Avalanche LS

TRUCK CENTER INVENTORY 901-304-7300 2601 SOUTH MENDENHALL 9013152155

View this car on our website at mtmoriahautos.com/7081547/ebrochure



Our Price **\$21,999**

Specifications:

Year:	2013
VIN:	3GNTKEE72DG323419
Make:	Chevrolet
Stock:	BT45192
Model/Trim:	Black Diamond Avalanche LS
Condition:	Pre-Owned
Body:	Pickup Truck
Exterior:	Black
Engine:	ENGINE, VORTEC 5.3L V8 SFI FLEXFUEL
Interior:	Black Leather
Transmission:	TRANSMISSION, 6-SPEED AUTOMATIC
Mileage:	144,014
Drivetrain:	4 Wheel Drive
Economy:	City 15 / Highway 21

Call 901.../304///7300 for informaton. Financing available with approved credit. Vehicle can be seen at the Mt. Moriah Truck Center, 2601 South Mendenhall, east of Scottsway, directly across from MPD Substation.

ASK FOR THE TRUCK CENTER!!!

Please ask for the Truck Center @ Mt Moriah Auto Sales

Vehicle History Report : as Of 04/02/2023



Snapshot

2013 CHEVROLET AVALANCHE LS BLACK DIAMOND



No accidents or damage reported to CARFAX



24 Service history records



4 Previous owners



Personal vehicle



Last owned in Mississippi



144,014 Last reported odometer reading



FREE CARFAX Report

See the full CARFAX Report for additional information

*carfax Snapshot is a reflection of available information on the date the report was pulled. carfax is constantly being updated with new information and is subject to change at any time.

Our Location :



2013 Chevrolet Black Diamond Avalanche LS

Mt. Moriah Auto Sales - 9013152155 - View this car on our website at mtmoriahautos.com/7081547/ebrochure

Installed Options

Interior

- Air conditioning, dual-zone manual climate control with individual climate settings for driver and right front passenger. Includes rear air conditioning outlets in center console when bucket seats are ordered
- Assist handles, front passenger and rear outboard
- Console, floor with storage area, cup holders and integrated second row audio controls (Not available with (AZ3) 40/20/40 split-bench front seats.)
- Cruise control, electronic with set and resume speed - Defogger, rear-window electric
- Door locks, power programmable with lockout protection
- Floor covering, color-keyed carpeting with (B58) carpeted floor mats - Headliner, cloth
- Instrumentation, analog with speedometer, fuel level, voltmeter, engine temperature, oil pressure and tachometer
- Lighting, interior with dome light, driver-and passenger-side door switch with delayed entry feature, cargo light, door handle or Remote Keyless Entry-activated illuminated entry and map lights in front and second seat positions
- Mirror, inside rearview with rear camera display
- Pedals, power-adjustable for accelerator and brake
- Power outlets 2 instrument panel-mounted auxiliary with covers, 12-volt (On vehicles equipped with (A95) front bucket seats or (AN3) front leather appointed buckets seats, also includes 1 outlet inside center console and 1 in rear of console)

- Rear Vision Camera (Note: images appear on Navigation screen for units equipped with (UYS) AM/FM/SiriusXM stereo with MP3 compatible CD/DVD player and navigation. For units not equipped with Navigation systems images will appear within rearview mirror.)
- Remote vehicle starter system includes Remote Keyless Entry
- Seats, front bucket with (AG1) 6-way power driver and (AG2) front passenger seat adjusters, adjustable head restraints, (AM1) driver manual lumbar control, floor console and rear storage pockets
- Seats, rear 60/40 split-bench, 3-passenger, flip and fold with child seat top tether anchor
- Steering column, Tilt-Wheel, adjustable with brake/transmission shift interlock
- Steering wheel controls, mounted audio and cruise controls
- Steering wheel, leather-wrapped Theft-deterrent system, vehicle, PASS-Key III
- Visors driver and front passenger illuminated vanity mirrors, padded with cloth trim, extends on rod
- Warning tones headlamp on, key-in-ignition, driver and right-front passenger safety belt unfasten and turn signal on
- Windows, power with driver and front passenger Express-Down and lockout features

Exterior

- Assist steps, Dark Charcoal- Body-colored exterior components
- Cargo cover, rear rigid, 3-piece composite, stowable onboard- Door handles, color-keyed
- Fascia, front color-keyed- Fascia, rear color-keyed- Fog lamps, front, halogen
- Glass, Solar-Ray deep tinted (all windows except light tinted glass on windshield, driver and front passenger)
- Headlamps, dual halogen composite with automatic exterior lamp control and flash-to-pass feature
- Luggage rack center rails, roof-mounted, Black
- Luggage rack side rails, roof-mounted, Black
- Midgate, foldable door between cargo box and cab with a removable and stowable rear window
- Mirrors, outside heated power-adjustable, manual-folding, color-keyed
- Moldings, bodyside, color-keyed- Pickup box mat, Black rubber
- Recovery hooks, front, frame-mounted (Standard with 4WD Models only)
- Storage box, integrated top box with locks and lights - Tire, spare P265/70R17
- Tires, P265/70R17 touring, all-season, blackwall
- Wheel, 17" (43.2 cm) full-size, aluminum spare (Requires 4WD models.)
- Wheels, 4-17" x 7.5" (43.2 cm x 19.1 cm) aluminum, 5-spoke with smooth surface and rectangular pockets

Safety

- Air conditioning, dual-zone manual climate control with individual climate settings for driver and right front passenger. Includes rear air conditioning outlets in center console when bucket seats are ordered
- Assist handles, front passenger and rear outboard
- Console, floor with storage area, cup holders and integrated second row audio controls (Not available with (AZ3) 40/20/40 split-bench front seats.)
- Cruise control, electronic with set and resume speed - Defogger, rear-window electric
- Door locks, power programmable with lockout protection
- Floor covering, color-keyed carpeting with (B58) carpeted floor mats- Headliner, cloth
- Instrumentation, analog with speedometer, fuel level, voltmeter, engine temperature, oil pressure and tachometer
- Lighting, interior with dome light, driver-and passenger-side door switch with delayed entry feature, cargo light, door handle or Remote Keyless Entry-activated illuminated entry and map lights in front and second seat positions
- Mirror, inside rearview with rear camera display
- Pedals, power-adjustable for accelerator and brake
- Power outlets 2 instrument panel-mounted auxiliary with covers, 12-volt (On vehicles equipped with (A95) front bucket seats or (AN3) front leather appointed buckets seats, also includes 1 outlet inside center console and 1 in rear of console)
- Rear Vision Camera (Note: images appear on Navigation screen for units equipped with (UYS) AM/FM/SiriusXM stereo with MP3 compatible CD/DVD player and navigation. For units not equipped with Navigation systems images will appear within rearview mirror.)
- Remote vehicle starter system includes Remote Keyless Entry
- Seats, front bucket with (AG1) 6-way power driver and (AG2) front passenger seat adjusters, adjustable head restraints, (AM1) driver manual lumbar control, floor console and rear storage pockets
- Seats, rear 60/40 split-bench, 3-passenger, flip and fold with child seat top tether anchor
- Steering column, Tilt-Wheel, adjustable with brake/transmission shift interlock
- Steering wheel controls, mounted audio and cruise controls
- Steering wheel, leather-wrapped Theft-deterrent system, vehicle, PASS-Key III
- Visors driver and front passenger illuminated vanity mirrors, padded with cloth trim, extends on rod
- Warning tones headlamp on, key-in-ignition, driver and right-front passenger safety belt unfasten and turn signal on
- Windows, power with driver and front passenger Express-Down and lockout features

Mechanical

- Alternator, 145 amps
- Battery, heavy-duty 600 cold-cranking amps, maintenance-free with rundown protection and retained accessory power
- Brakes, 4-wheel antilock, 4-wheel disc
- Engine, Vortec 5.3L V8 SFI FlexFuel with Active Fuel Management, capable of running on unleaded or up to 85% ethanol (with gas - 320 hp [239 kW] @ 5400 rpm, 335 lb-ft of torque [454 N-m] @ 4000 rpm, with E85 ethanol - 326 hp [243 kW] @ 5300 rpm, 348 lb-ft of torque [472 N-m] @ 4400 rpm), aluminum block (Requires 4WD models.)
- Four wheel drive- GVWR, 7200 lbs. (3266 kg) (Requires CK10936 models)
- Key, single, 2-sided
- Rear axle, 3.08 ratio (Not available with (K5L) heavy-duty trailering package)
- Steering, power- Suspension Package, Premium Smooth Ride
- Suspension, front coil-over-shock with stabilizer bar
- Suspension, rear multi-link with coil springs
- Trailering equipment includes trailering hitch platform, 7-wire harness with independent fused trailering circuits mated to a 7-way sealed connector and (VR4) 2" trailering receiver
- Transfer case, active, single-speed does not include neutral and cannot be dinghy towed (Requires CK10936 models. Not available with (K5L) heavy-duty trailering equipment.)
- Transmission, 6-speed automatic

Option Packages

Factory Installed Packages

- _____
 ENGINE, VORTEC 5.3L V8 SFI
 FLEXFUEL
 with Active Fuel Management,
 capable of running on
 unleaded or up to 85% ethanol

- _____
 TRANSMISSION, 6-SPEED AUTOMATIC

*Price does not include taxes, tags, title, license, registration, documentation fee of \$698.00 or other delivery charges.

Mt. Moriah Auto Sales

mtmoriahautos.com

9013152155

2571 MT MORIAH RD

Memphis, TN 38115

© 2023 AutoRevo - All rights reserved. - Powered by AutoRevo