

2022 Ford F-150 Tremor 4X4 LIFTED,NAV,360 CAM,FUEL WHLS,31 MILES

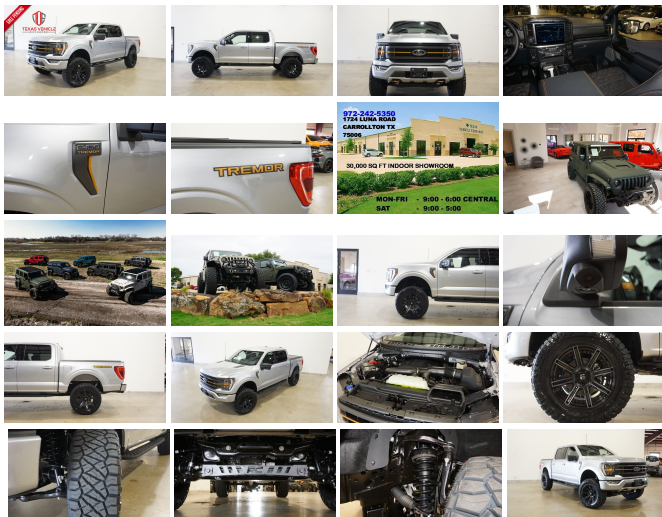
View this car on our website at tveauto.com/7080567/ebrochure



Our Price **\$69,900**

Specifications:

Year:	2022
VIN:	1FTEW1E87NFA68471
Make:	Ford
Stock:	A68471
Model/Trim:	F-150 Tremor 4X4 LIFTED,NAV,360 CAM,FUEL WHLS,31 MILES
Condition:	Pre-Owned
Body:	Pickup Truck
Exterior:	Iconic Silver Metallic
Engine:	ENGINE: 3.5L V6 ECOBOOST
Interior:	Black Cloth
Transmission:	TRANSMISSION: ELECTRONIC 10-SPEED AUTOMATIC
Mileage:	31
Drivetrain:	4 Wheel Drive
Economy:	City 16 / Highway 20



NATION WIDE FINANCING

SUBMIT CREDIT APP [WWW.TVEAUTO.COM](https://www.tveauto.com)

OR CALL 972-242-5350

2022 FORD F150 SUPER CREW TREMOR 4X4, 3.5L V6 ECOBOOST ENGINE, ELECTRONIC 10 SPEED AUTOMATIC TRANSMISSION, ONLY 31 MILES, ICONIC SILVER METALLIC W/BLACK CLOTH INTERIOR, CARFAX REPORTS 1 OWNER NO ACCIDENTS, NON-SMOKER, REMOTE START, FOGLIGHTS, ROUGH COUNTRY 4" SUSPENSION LIFT KIT, FRONT & REAR PARK DISTANCE SENSORS, 12" TOUCH SCREEN NAVIGATION, BACK-UP CAMERA, CARGO CAMERA. 360 VIEW CAMERAS.

BLACK RUNNING BOARDS, POWER WINDOWS, POWER DOOR LOCKS, POWER HEATED MIRRORS WITH TURN SIGNALS, BLIND SPOT CONTROL, TILT/TELESCOPE STEERING WHEEL WITH AUDIO & CRUISE CONTROLS, DUAL POWER & HEATED FRONT SEATS, TRACTION CONTROL, LANE KEEPING SYSTEM, HILL DESCENT CONTROL, AUXILIARY SWITCHES, TRAILER BRAKE CONTROLLER, ICE COLD A/C, DUAL CLIMATE CONTROL, BANG & OLUFSEN HD AM/FM/SIRIUS STEREO, MICROSOFT SYNC VOICE ACTIVATED SYSTEM, SELF DIMMING REAR VIEW MIRROR, DUAL VANITY MIRRORS, REAR A/C VENTS, BED COVER, SPRAY IN BEDLINER, TOW PACKAGE WITH RECEIVER HITCH, FLOOR MATS, OWNER'S MANUAL, 2 KEYS/2 REMOTES, 20" FUEL GLOSS BLACK/BRUSHED GLOSS DDT "ROGUE" WHEELS, FRONT TIRES ARE BRAND NEW NITTO RIDGE GRAPPLER 35X12.50R/20, REAR TIRES ARE BRAND NEW NITTO RIDGE GRAPPLER 35X12.50R/20. RUNS AND DRIVES GREAT. GIVE US A CALL @ 972-242-5350 OR STOP BY FOR A TEST DRIVE. 1724 LUNA RD IN CARROLLTON - 2 MILES NORTH OF 635. CLICK ON CARFAX ICON TO VIEW A FULL REPORT AT NO COST TO YOU.

2022 Ford F-150 Tremor 4X4 LIFTED,NAV,360 CAM,FUEL WHLS,31 MILES

Texas Vehicle Exchange - 972-242-5350 - View this car on our website at tveauto.com/7080567/ebrochure

Our Location :



2022 Ford F-150 Tremor 4X4 LIFTED,NAV,360 CAM,FUEL WHLS,31 MILES

Texas Vehicle Exchange - 972-242-5350 - View this car on our website at veauto.com/7080567/ebrochure

Installed Options

Interior

- Full Carpet Floor Covering -inc: Carpet Front And Rear Floor Mats
- Lane-Keeping System -inc: lane-keeping alert, lane-keeping aid and driver alert
- Manual Air Conditioning- Manual Tilt/Telescoping Steering Column- Perimeter Alarm
- Power 1st Row Windows w/Driver And Passenger 1-Touch Up/Down
- Power Door Locks w/Autolock Feature- Power Rear Windows
- Pre-Collision Assist w/Automatic Emergency Braking -inc: pedestrian detection, forward collision warning and dynamic brake support
- Rear View Camera
- Remote Keyless Entry w/Integrated Key Transmitter, Illuminated Entry and Panic Button
- SYNC 4 Connected Navigation Integrated Navigation System w/Voice Activation
- SYNC 4 w/Enhanced Voice Recognition -inc: 12" LCD capacitive touchscreen w/swipe capability, information on demand panel, wireless phone connection, cloud connected, AppLink w/App catalog, 911 Assist, Apple CarPlay and Android Auto compatibility, digital owners manual, conversational voice command recognition and connected navigation, Note: Navigation services require SYNC@4 and FordPass Connect (optional on select vehicles), complimentary connect service and the FordPass app (see FordPass Terms for details), Customer receives a complimentary 90-day trial of navigation services when an eligible vehicle is added to a member's FordPass account, Trial period begins on the new vehicle warranty start date, At the end of the complimentary period, navigation service will terminate, Connected service and features depend on compatible AT&T network availability, Evolving technology/cellular networks/vehicle capability may limit functionality and prevent operation of connected features, FordPass App, compatible w/select smartphone platforms, is available via a download, Message and data rates may apply
- Securilock Anti-Theft Ignition (pats) Engine Immobilizer
- Smart Device Remote Engine Start
- Unique Sport Cloth 40/Console/40 Front Seat -inc: manual driver/passenger lumbar, flow-through console and steering column mounted shift
- 1 12V DC Power Outlet- 2 Seatback Storage Pockets
- 4-Way Driver Seat -inc: Manual Recline and Fore/Aft Movement
- 4-Way Passenger Seat -inc: Manual Recline and Fore/Aft Movement
- 60-40 Folding Split-Bench Front Facing Fold-Up Cushion Rear Seat - Air Filtration
- Analogue Appearance- Compass- Cruise Control w/Steering Wheel Controls

Option Packages

Factory Installed Packages

ENGINE: 3.5L V6 ECOBOOST

-inc: auto start-stop technology

TRANSMISSION: ELECTRONIC 10-SPEED AUTOMATIC

-inc: selectable drive modes: normal, ECO, sport, tow/haul, slippery, deep snow/sand and mud/rut

360 DEGREE CAMERA

-inc: trailer reverse guidance

\$765

AUTO START-STOP REMOVAL

-\$50

FORD CO-PILOT360 ASSIST 2.0

-inc: rain-sensing wipers, Evasive Steering Assist, Intelligent Adaptive Cruise Control w/Stop & Go, lane centering, Speed Sign Recognition, Connected Built-In Navigation, Navigation services require SYNC4 and FordPass Connect (optional on select vehicles), complimentary connect service and the FordPass app (see FordPass Terms for details), Eligible vehicles receive a complimentary 90-day trial of navigation services that begins on the new vehicle warranty start date, Customers must unlock the navigation service trial by activating the eligible vehicle w/a FordPass member account, If not subscribed by the end of the complimentary period, the navigation service will terminate, Connected

\$750

- Day-Night Rearview Mirror- Delayed Accessory Power- Fade-To-Off Interior Lighting
- FordPass Connect 4G Mobile Hotspot Internet Access- Front And Rear Map Lights
- Front Center Armrest- Front Cupholder- Full Cloth Headliner
- Gauges -inc: Speedometer, Odometer, Voltmeter, Oil Pressure, Engine Coolant Temp, Tachometer, Transmission Fluid Temp and Trip Odometer
- HVAC -inc: Underseat Ducts and Console Ducts
- Instrument Panel Bin, Dashboard Storage, Interior Concealed Storage, Driver / Passenger And Rear Door Bins
- Interior Trim -inc: Metal-Look Instrument Panel Insert, Cabback Insulator and Chrome/Metal-Look Interior Accents
- Locking Glove Box
- Manual Adjustable Front Head Restraints and Manual Adjustable Rear Head Restraints
- Mini Overhead Console w/Storage and 1 12V DC Power Outlet - Outside Temp Gauge
- Passenger Visor Vanity Mirror- Pickup Cargo Box Lights- Rear Cupholder
- Seats w/Cloth Back Material- Urethane Gear Shifter Material

Exterior

- Black Power Heated Side Mirrors w/Manual Folding
- Body-Colored Front Bumper w/Body-Colored Rub Strip/Fascia Accent and 2 Tow Hooks
- Body-Colored Rear Step Bumper w/2 Tow Hooks
- Ford Co-Pilot360 - Autolamp Auto On/Off Aero-Composite Halogen Daytime Running Lights Preference Setting Headlamps w/Delay-Off
- Front Fog Lamps- Tailgate/Rear Door Lock Included w/Power Door Locks
- Variable Intermittent Wipers- Aluminum Panels- Auto High Beam- Black Door Handles
- Black Grille- Black Side Windows Trim- Cargo Lamp w/High Mount Stop Light
- Clearcoat Paint w/Decal- Deep Tinted Glass- Fixed Rear Window w/Defroster
- Full-Size Spare Tire Stored Underbody w/Crankdown- Perimeter/Approach Lights
- Regular Box Style- Running Boards- Steel Spare Wheel- Tailgate Rear Cargo Access
- Tires: 275/70R18 All-Terrain- Wheels: 18" Alloy w/Dark Matte Finish

Safety

- Full Carpet Floor Covering -inc: Carpet Front And Rear Floor Mats
- Lane-Keeping System -inc: lane-keeping alert, lane-keeping aid and driver alert
- Manual Air Conditioning- Manual Tilt/Telescoping Steering Column- Perimeter Alarm
- Power 1st Row Windows w/Driver And Passenger 1-Touch Up/Down
- Power Door Locks w/Autolock Feature- Power Rear Windows
- Pre-Collision Assist w/Automatic Emergency Braking -inc: pedestrian detection, forward collision warning and dynamic brake support
- Rear View Camera
- Remote Keyless Entry w/Integrated Key Transmitter, Illuminated Entry and Panic Button
- SYNC 4 Connected Navigation Integrated Navigation System w/Voice Activation
- SYNC 4 w/Enhanced Voice Recognition -inc: 12" LCD capacitive touchscreen w/swipe capability, information on demand panel, wireless phone connection, cloud connected, AppLink w/App catalog, 911 Assist, Apple CarPlay and Android Auto compatibility, digital owners manual, conversational voice command recognition and connected navigation, Note: Navigation services require SYNC@4 and FordPass Connect (optional on select vehicles), complimentary connect service and the FordPass app (see FordPass Terms for details), Customer receives a complimentary 90-day trial of navigation services when an eligible vehicle is added to a member's FordPass account, Trial period begins on the new vehicle warranty start date, At the end of the complimentary period, navigation service will terminate, Connected service and features depend on compatible AT&T network availability, Evolving technology/cellular networks/vehicle capability may limit functionality and prevent operation of connected features, FordPass App, compatible w/select smartphone platforms, is available via a download, Message and data rates may apply
- Securilock Anti-Theft Ignition (pats) Engine Immobilizer
- Smart Device Remote Engine Start
- Unique Sport Cloth 40/Console/40 Front Seat -inc: manual driver/passenger lumbar, flow-through console and steering column mounted shift
- 1 12V DC Power Outlet- 2 Seatback Storage Pockets
- 4-Way Driver Seat -inc: Manual Recline and Fore/Aft Movement
- 4-Way Passenger Seat -inc: Manual Recline and Fore/Aft Movement
- 60-40 Folding Split-Bench Front Facing Fold-Up Cushion Rear Seat - Air Filtration
- Analog Appearance- Compass- Cruise Control w/Steering Wheel Controls
- Day-Night Rearview Mirror- Delayed Accessory Power- Fade-To-Off Interior Lighting
- FordPass Connect 4G Mobile Hotspot Internet Access- Front And Rear Map Lights
- Front Center Armrest- Front Cupholder- Full Cloth Headliner
- Gauges -inc: Speedometer, Odometer, Voltmeter, Oil Pressure, Engine Coolant Temp, Tachometer, Transmission Fluid Temp and Trip Odometer
- HVAC -inc: Underseat Ducts and Console Ducts
- Instrument Panel Bin, Dashboard Storage, Interior Concealed Storage, Driver / Passenger And Rear Door Bins
- Interior Trim -inc: Metal-Look Instrument Panel Insert, Cabback Insulator and Chrome/Metal-Look Interior Accents
- Locking Glove Box
- Manual Adjustable Front Head Restraints and Manual Adjustable Rear Head Restraints

service and features depend on compatible AT&T network availability, Evolving technology/cellular networks/vehicle capability may limit functionality and prevent operation of connected features, FordPass App, compatible w/select smartphone platforms, is available via a download,

FRONT-AXLE W/TORSEN DIFFERENTIAL

\$500

PRO POWER ONBOARD - 2KW

\$995

RADIO: B&O SOUND SYSTEM BY BANG & OLUFSEN

-inc: HD radio and 8 speakers including subwoofer \$610

RETRACTABLE TONNEAU PICKUP BOX COVER

\$1,695

TOUGH BED SPRAY-IN BEDLINER

\$595

TRAILER TOW PACKAGE

-inc: Towing capability up to TBD lbs, tailgate LED, Integrated Trailer Brake Controller \$1,090

EQUIPMENT GROUP 401A MID

-inc: Onboard 400W Outlet, 1 outlet in the IP, 2nd outlet in the console and an additional outlet in the bed, Dual Zone Electronic Automatic Temperature Control, Power Glass Heated Sideview Mirrors, manual folding, turn signal and black skull caps, Auto-Dimming Rearview Mirror, Extended Range 36 Gallon Fuel Tank, Heated Front Seats, Body-Color Door Handles w/Body-Color Bezel, Ford Co-Pilot360 2.0, Reverse Sensing System, Post-Collision Braking, Reverse Brake Assist, BLIS w/Cross Traffic Alert, Trail Control, trail 1-pedal drive and trail turn assist, Zone Lighting, Leather-Wrapped Steering Wheel, active orange stitching, Intelligent Access w/Push Button Start, approach detection, SecuriCode Drivers Side Keyless-Entry Keypad, Remote Start System w/Remote Tailgate Release, LED Sideview Mirror Spotlights, high-intensity LED security approach lamps, 8" Productivity Screen in Instrument Cluster, LED Reflector Headlamps, LED fog lamps w/LED cornering lamp in fog lamps,

\$6,065

ICONIC SILVER METALLIC

BLACK, UNIQUE SPORT CLOTH 40/CONSOLE/40 POWER FRONT SEAT

-inc: 10-way power seat, multi-adjustable power front passenger seat (power lumbar driver/passenger), flow-through console and floor shifter

Option Packages Total

\$13,015

- Manual Adjustable Front Head Restraints and Manual Adjustable Rear Head Restraints
- Mini Overhead Console w/Storage and 1 12V DC Power Outlet - Outside Temp Gauge
- Passenger Visor Vanity Mirror- Pickup Cargo Box Lights- Rear Cupholder
- Seats w/Cloth Back Material- Urethane Gear Shifter Material

Mechanical

- Driver Selectable Rear Locking Differential- Part-Time Four-Wheel Drive
- Transmission: Electronic 10-Speed Automatic -inc: selectable drive modes: normal, ECO, sport, tow/haul, slippery, deep snow/sand and mud/rut
- 1885# Maximum Payload- 200 Amp Alternator- 26 Gal. Fuel Tank- 3 Skid Plates
- 4-Wheel Disc Brakes w/4-Wheel ABS, Front And Rear Vented Discs, Brake Assist, Hill Descent Control, Hill Hold Control and Electric Parking Brake
- 70-Amp/Hr 610CCA Maintenance-Free Battery w/Run Down Protection
- Auto Locking Hubs
- Class IV Trailer Hitch Receiver -inc: towing capability up to TBD lbs, on 3.5L EcoBoost engine (998), 7/4-pin connector, class IV trailer hitch receiver, smart trailer tow connector (BLIS w/trailer tow coverage where BLIS is available) Ordering the Trailer Tow Package does not include Integrated Brake Controller (67T). Integrated Brake Controller (67T) is a standalone option and must be ordered separately.
- Double Wishbone Front Suspension w/Coil Springs
- Dual Stainless Steel Exhaust w/Black Tailpipe Finisher
- Electric Power-Assist Speed-Sensing Steering- Electronic Locking w/3.73 Axle Ratio
- Electronic Transfer Case- Engine: 3.5L V6 EcoBoost -inc: auto start-stop technology
- Front Anti-Roll Bar- GVWR: 7,050 lbs Payload Package- HD Shock Absorbers
- Leaf Rear Suspension w/Leaf Springs- Towing Equipment -inc: Trailer Sway Control

Texas Vehicle Exchange

tveauto.com

972-242-5350

1724 Luna Road

Carrollton, TX 75006

© 2024 AutoRevo - All rights reserved. - Powered by AutoRevo