



## 2006 Chevrolet Corvette w/ KOOKS Headers, C6 ZR1 Wheels, & MORE!

**Website Price \$28,995**

View this vehicle on our website at [autoparkdallas.com](http://autoparkdallas.com)



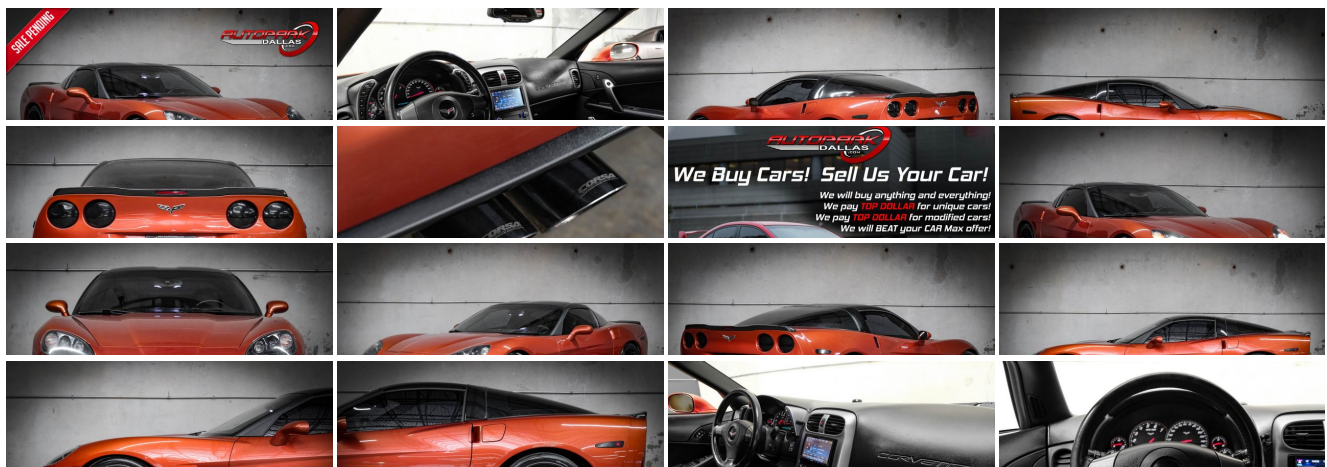
(214) 945-2601

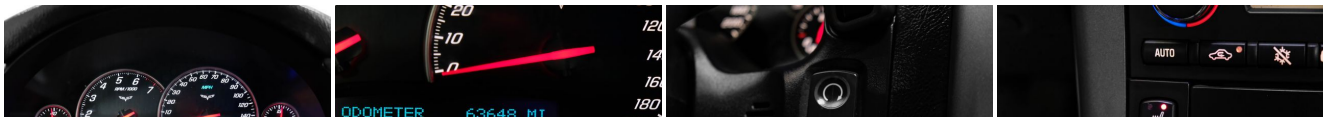
2061 S Stemmons Fwy , Lewisville, TX 75067

Photos

Details

Contact





## Specifications:

<b>Year:</b>	2006
<b>VIN:</b>	1G1YY26U765111893
<b>Make:</b>	Chevrolet
<b>Model/Trim:</b>	Corvette w/ KOOKS Headers, C6 ZR1 Wheels, & MORE!
<b>Condition:</b>	Pre-Owned
<b>Body:</b>	Coupe
<b>Exterior:</b>	Daytona Sunset Orange Met
<b>Engine:</b>	ENGINE, 6.0L V8 SFI
<b>Interior:</b>	Ebony Leather
<b>Transmission:</b>	Transmission, 6-speed manual, short-throw
<b>Mileage:</b>	63,647
<b>Drivetrain:</b>	Rear Wheel Drive
<b>Economy:</b>	City 17 / Highway 27

## Vehicle Description

AutoPark Dallas is thrilled to offer you this BEASTLY Daytona Sunset Orange 2006 Chevrolet Corvette with MODS & 3LT Package for sale! There is not a soul that does not know the Corvette, with its signature look and being a low-profile sport car. These bald eagle screaming U.S. born beauties are a thrill to drive and always stand out in any crowded car meet or a parking lot. If you're looking for a American Sports Car, then come swing by to check out this Corvette parked in our indoor 16,000 Sq Ft Showroom located in Dallas , Texas amongst our inventory of 100+ other Performance / Modified and Luxury Vehicles!

---

## 2006 Chevrolet Corvette

\* 3LT Package !\*

\* Memory Package !\*

### MODIFICATIONS!

Gloss Black C6 ZR1 Corvette Wheels

KOOKS Long Tube Headers

CORSA Performance Exhaust System

VaraRam Cold-Air Intake

Blacked Out Headlight Housing

Blacked Out Tail Lights

Blacked Out Side Markers

Carbon Fiber ZR1 Style Spoiler

Carbon Fiber Front Lip

Wrapped Gloss Black Roof

KENWOOD Stereo Unit w/ Bluetooth

Blue LED Interior Reading Lights

Aftermarket Shift Knob

Windows Tinted

## STOCK!

\* Beautiful \* Daytona Sunset Orange Metallic Exterior

Ebony Black Leather Interior

Heated Driver & Passenger Seats

Digital Heads-Up Display

Dual Climate Controls

Cruise Control

Push Button Start

Comfort Access Keyless Entry

Driver Seat Memory

Daytime Running Lights

6.0L V8 SFI Engine

6-Speed Manual Transmission

Rear Wheel Drive

Professionally Detailed!

Well Maintained!

\* Free CarFax Report !\*

AND SO MUCH MORE!!!

---

## Financing is available!

Check out our Payment Calculator to get an estimate on your monthly payments!

OR

Get pre-approved in no time by filling out a credit application on the 'Finance' section of our website!

We also offer MANY different Extended Warranty options!

---

Check out our Google Reviews by \*Clicking\* this LINK!

Referrals and Testimonials is what our business is built on!

---

The team here at AutoPark Dallas, is dedicated to offering a level of customer service not usually found in the automobile industry. Thanks to years of extensive car buying / selling experience, we pursue quality used and new vehicles that are hand-picked from factory sources. Our love for automobiles and dislike of traditional dealership tactics is what motivates us to provide the service we do! The pride we take in continuing this service long after the vehicle has been delivered is what we strive for! Looking forward to making every effort to see that our customer is completely satisfied and a friend for life!

Pre-purchase inspections are always welcomed!

We also offer airport pick-up, competitive financing options, free CarFax Reports, Car Shipping nationwide, Extended Warranty plans, and so much more!

Trade-In(s) are always accepted or sell us your used car (MODIFIED OR NOT)! Please call or text for more information about Trade-Ins or selling your car to us @ (214) 945-2601!

---

# #(214) 945-2601

## Call or Text **Anytime!**

## Se habla Español

# WE BUY CARS!

## WWW.AUTOPARKDALLAS.COM

### Installed Options

#### Interior

- Air conditioning, dual-zone, automatic, includes individual climate settings for driver and right front passenger, automatic climate control and outside temperature display
- Air filtration, includes pollen filter - Antenna, integral, hidden
- Console, floor, lockable, includes 2 covered cupholders, ashtray with cigar lighter, auxiliary power outlet and CD storage
- Cruise control, electronic with set and resume speed - Defogger, rear-window, electric
- Door locks, power, programmable, includes lockout protection- Floor mats, carpeted
- Hatch release, push button open (Includes power hatch pulldown.)
- Instrumentation, analog, electronic, includes Driver Information Center with 2 line display
- Keyless Access, with push-button start, includes 2 remote transmitters which enable automatic door unlock and open by touching door switch
- Lighting, interior, courtesy, cargo and glovebox
- Mirror, inside rearview, manual day/night, includes dual reading lights
- Oil life monitoring system- Seat adjuster, power, driver 6-way
- Seats, front bucket with leather seating surfaces, includes back angle adjustment
- Sound system, ETR AM/FM stereo with CD player and MP3 playback, includes Radio Data System, seek-and-scan, digital clock, auto-tone control, automatic volume, Theftlock and (U66) Sound system feature, 7-speaker system
- Steering column, manual, Tilt-Wheel- Steering wheel, leather-wrapped, smaller, 3-spoke
- Storage, includes lockable glovebox, center console and 2 rear compartments with covers
- Theft-deterrent system, push button start, immobilizer and audible visual alarm
- Tire Pressure Monitor System, air pressure sensors in each tire, pressure display in Driver Information Center
- Visors, illuminated vanity mirrors, driver and front passenger
- Windows, power, includes driver and passenger express-down

#### Exterior

- Daytime running lamps- Fog lamps, front, integral in fascia- Glass, Solar-Ray light tinted
- Headlamps, dual projector lamps, xenon high-intensity discharge low-beam, tungsten-halogen high-beam, includes automatic exterior lamp control
- Mirrors, outside rearview, power, heated, body-color
- Roof panel, removable, 1-piece, body-color- Wipers, intermittent, front

#### Safety

- Air conditioning, dual-zone, automatic, includes individual climate settings for driver and right front passenger, automatic climate control and outside temperature display
- Air filtration, includes pollen filter - Antenna, integral, hidden
- Console, floor, lockable, includes 2 covered cupholders, ashtray with cigar lighter, auxiliary power outlet and CD storage
- Cruise control, electronic with set and resume speed - Defogger, rear-window, electric
- Door locks, power, programmable, includes lockout protection- Floor mats, carpeted
- Hatch release, push button open (Includes power hatch pulldown.)
- Instrumentation, analog, electronic, includes Driver Information Center with 2 line display
- Keyless Access, with push-button start, includes 2 remote transmitters which enable automatic door unlock and open by touching door switch
- Lighting, interior, courtesy, cargo and glovebox
- Mirror, inside rearview, manual day/night, includes dual reading lights
- Oil life monitoring system- Seat adjuster, power, driver 6-way
- Seats, front bucket with leather seating surfaces, includes back angle adjustment

### Option Packages

#### Factory Installed Packages

##### ENGINE, 6.0L V8 SFI

(400 HP [298.3 kW] @ 6000 rpm, 400 lb.-ft.  
[542.8 N-m] @ 4400 rpm)

##### AIR BAGS, FRONTAL AND SIDE IMPACT, DRIVER AND FRONT PASSENGER WITH PASSENGER SIDE SUPPRESSION

(Always use safety belts and proper child restraints, even with air bags. See the Owners Manual for more safety information.)

##### HEAD-UP DISPLAY

includes dot-matrix readouts for street mode, track mode with g-meter, vehicle speed, engine rpm, and readings from key gauges including water temperature and oil pressure

##### LICENSE PLATE BRACKET, FRONT

##### MEMORY PACKAGE

2 driver settings, remembers "presets" for 6-way power seat, outside mirrors and telescoping steering column

##### SOUND SYSTEM FEATURE, XM SATELLITE RADIO

features 67 channels of 100% commercial-free music included in its over 150 channels of the best in music, news, sports, talk, comedy, XM Instant Traffic and Weather, and more. Digital quality sound with coast-to-coast signal coverage. Three trial months-no obligation.

##### UNIVERSAL HOME REMOTE

includes garage door opener, 3-channel programmable, located on driver visor

##### AXLE, 3.42 RATIO, LIMITED SLIP

##### EMISSIONS, FEDERAL REQUIREMENTS

##### PREMIUM COAT PAINT

\$750

##### PREFERRED EQUIPMENT GROUP

includes (AJ7) Air bags, frontal and side impact, driver and front passenger, Cargo convenience net, in rear compartment area, (UV6) Head-Up Display, (UG1) Universal Home Remote, (D42) Luggage shade, (AAB) Memory Package, (DD0)

\$4,795

- Seats, front bucket with leather seating surfaces, includes back angle adjustment
- Sound system, ETR AM/FM stereo with CD player and MP3 playback, includes Radio Data System, seek-and-scan, digital clock, auto-tone control, automatic volume, Theftlock and (U66) Sound system feature, 7-speaker system
- Steering column, manual, Tilt-Wheel- Steering wheel, leather-wrapped, smaller, 3-spoke
- Storage, includes lockable glovebox, center console and 2 rear compartments with covers
- Theft-deterrent system, push button start, immobilizer and audible visual alarm
- Tire Pressure Monitor System, air pressure sensors in each tire, pressure display in Driver Information Center
- Visors, illuminated vanity mirrors, driver and front passenger
- Windows, power, includes driver and passenger express-down

### Mechanical

- Wheels, 5-spoke silver painted aluminum, 18" x 8.5" (45.7 cm x 21.6 cm), front and 19" x 10.0" (48.3 cm x 25.4 cm), rear
- Active handling, improves traction and enhances vehicle stability
- Axle, 3.42 ratio, limited slip (Included and only available with (MN6) Transmission, 6-speed manual.)
- Brakes, 4-wheel antilock, 4-wheel disc
- Engine access, rear opening hood, includes underhood lamp
- Engine, 6.0L V8 SFI (400 HP [298.3 kW] @ 6000 rpm, 400 lb.-ft. [542.8 N-m] @ 4400 rpm)
- Exhaust, aluminized stainless-steel with polished 3" stainless-steel tips
- Fuel capacity, approximate, 18 gallon (68 liters)- Rear wheel drive
- Steering, power, speed-sensitive, rack and pinion
- Suspension, 4-wheel independent, includes transverse fiberglass leaf springs
- Tires, front P245/40ZR18, extended mobility, Eagle F1
- Tires, rear P285/35ZR19, extended mobility, Eagle F1 - Traction control, all-speed
- Transmission, 6-speed manual, short-throw (Includes (GU6) Axle, 3.42 ratio.)

- Mirrors, inside rearview with compass and driver outside rearview, auto-dimming, (AG2) Seat adjuster, power, front passenger 6-way, (AQ9) Seats, front Sport bucket with leather seating surfaces, (KA1) Seats, heated, driver and passenger, (US9) Sound system, ETR AM/FM stereo with 6-disc, in dash CD changer, MP3 playback, (N37) Steering column, power telescopic, includes manual tilt, (U2K) Sound system feature, XM Satellite Radio

---

### HIGHWEAR NUANCE LEATHER SEAT TRIM

---

### SEATS, FRONT SPORT BUCKET WITH LEATHER SEATING SURFACES

includes back angle adjustment, adjustable lumbar and side bolsters

---

Option Packages Total

\$5,545



Auto Park Dallas

View this car on our website at [autoparkdallas.com/7079792](http://autoparkdallas.com/7079792)

Website: [autoparkdallas.com](http://autoparkdallas.com)

Phone: (214) 945-2601

Map: [2061 S Stemmons Fwy, Lewisville, TX 75067](#)

