



2010 Chevrolet Corvette Z16 Grand Sport w/3LT Package & A&A Supercharged!

Website Price \$43,995

View this vehicle on our website at autoparkdallas.com



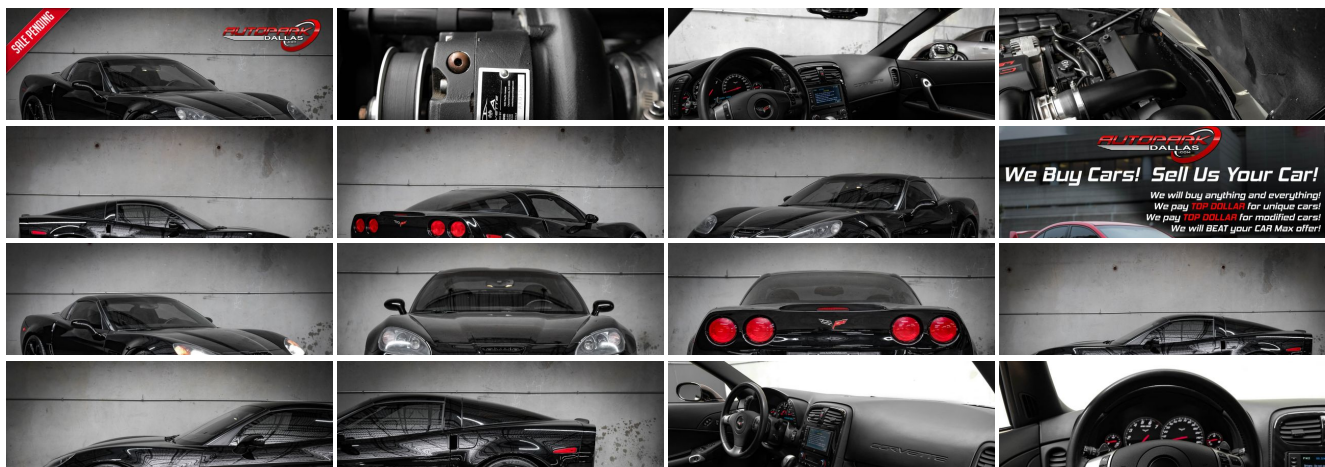
(214) 945-2601

2061 S Stemmons Fwy , Lewisville, TX 75067

Photos

Details

Contact





Specifications:

Year:	2010
VIN:	1G1YW2DW1A5104618
Make:	Chevrolet
Model/Trim:	Corvette Z16 Grand Sport w/3LT Package & A&A Supercharged!
Condition:	Pre-Owned
Body:	Coupe
Exterior:	Black
Engine:	ENGINE, 6.2L V8 SFI
Interior:	Ebony Leather
Transmission:	TRANSMISSION, 6-SPEED PADDLE SHIFT WITH AUTOMATIC MODES
Mileage:	60,936
Drivetrain:	Rear Wheel Drive
Economy:	City 15 / Highway 25

Vehicle Description

AutoPark Dallas is thrilled to offer you this A&A Performance Supercharger 2010 Chevrolet Corvette Z16 Grand Sport w/ 3LT Package for sale! The American made 2-door coupe that strikes a fire in everyone's heart with a passion for speed, the desire to burn some rubber, and the competitive spirit! There is not a soul that does not recognize that unique style of a Corvette and its hard to forget it to when your getting smoked by one. Our Grand Sport here at APD comes in that Classic Solid Black on Black, a beautiful A&A Performance Supercharger Kit, and a CORSA Performance Cat-Back Exhaust that helps make this eagle scream to life every time you push the gas! DO! NOT! HESITATE!!! To swing by and checks out this BEASTLY Grand Sport parked here in our indoor 16,000 Sq Ft Showroom located in Dallas , Texas amongst our inventory of 100+ other Performance / Modified and Luxury Vehicles!

2010 Chevrolet Corvette Z16 Grand Sport

* Clean CarFax !*

* 3LT Package !*

* Z51 Performance Package !*

MODIFICATIONS!

A&A Corvette Performance Supercharger Kit

* MSRP = \$6,499.99 !*

A&A Performance Intercooler w/ RAM Air Intake

Custom Gloss Black C6 Grand Sport Wheels

CORSA Performance Exhaust

Windows Tinted

STOCK!

Black Exterior

Black Leather Interior

Bluetooth

Navigation
Push Button Start
Heated Driver & Passenger Seats
Comfort Access Keyless Entry
Dual Climate Controls
Cruise Control
Daytime Running Lights
BOSE Premium Audio System
CD & AUX Capable
Steering Wheel Mounted Controls
Manual Mode w/ Paddle Shifters
6.2L V8 SFI Engine
6-Speed Automatic Transmission
Rear Wheel Drive
Professionally Detailed!
Well Maintained!
** Free CarFax Report !**
AND SO MUCH MORE!!!

Financing is available!

Check out our Payment Calculator to get an estimate on your monthly payments!

OR

Get pre-approved in no time by filling out a credit application on the 'Finance' section of our website!

Check out our Google Reviews by **Clicking** this [LINK!](#)

Referrals and Testimonials is what our business is built on!

The team here at AutoPark Dallas, is dedicated to offering a level of customer service not usually found in the automobile industry. Thanks to years of extensive car buying / selling experience, we pursue quality used and new vehicles that are hand-picked from factory sources. Our love for automobiles and dislike of traditional dealership tactics is what motivates us to provide the service we do! The pride we take in continuing this service long after the vehicle has been delivered is what we strive for! Looking forward to making every effort to see that our customer is completely satisfied and a friend for life!

Pre-purchase inspections are always welcomed!

We also offer airport pick-up, competitive financing options, free CarFax Reports, Car Shipping nationwide, Extended Warranty plans, and so much more!

Trade-In(s) are always accepted or sell us your used car (MODIFIED OR NOT)! Please call or text for more information about Trade-Ins or selling your car to us @ (214) 945-2601!

#(214) 945-2601

Call or Text *Anytime!*

Se habla Español

WE BUY CARS!

WWW.AUTOPARKDALLAS.COM

Installed Options

Interior

- Air conditioning, dual-zone automatic climate control with individual climate settings for driver and right-front passenger and outside temperature display
- Air filtration system with pollen filter- Cargo net and luggage shade
- Console, floor 2 covered cup holders, ashtray with cigar lighter, auxiliary power outlet and CD storage
- Cruise control, electronic with set and resume speed - Defogger, rear-window, electric
- Door locks, power programmable with lockout protection- Floor mats, carpeted
- Hatch release, push button open with power hatch pulldown
- Head-Up Display with dot-matrix readouts for street mode, track mode with g-meter, vehicle speed, engine rpm and readings from key gauges including water temperature and oil pressure
- Instrumentation, electronic analog with Driver Information Center and 2-line display
- Keyless Access with push button start and 2 remote transmitters that enable automatic door unlock and open by touching door switch
- Lighting, interior with courtesy, cargo and glovebox
- Memory Package, recalls 2 driver "presets" for 6-way power seat, outside mirrors and telescoping steering column
- Mirror, inside rearview auto-dimming with compass, includes dual reading lights
- Oil life monitoring system- Seat adjuster, driver 6-way power
- Seat adjuster, front passenger 6-way power
- Seat adjusters, power bolster and power lumbar
- Seats, Sport front bucket with perforated leather seating surfaces includes back angle adjustment, adjustable lumbar and side bolsters
- Seats, heated driver and front passenger
- Steering column, power telescopic with manual tilt
- Steering wheel controls, mounted audio controls
- Steering wheel, 3-spoke leather-wrapped
- Storage, with lockable glovebox, center console and 2 rear compartments with covers (Only includes 1 rear storage compartment with manual transmission.)
- Theft-deterrent system, vehicle push button start, immobilizer and audible visual alarm
- Universal Home Remote includes garage door opener, 3-channel programmable, located on driver visor
- Visors, driver and front passenger illuminated vanity mirrors
- Windows, power with driver and passenger Express-Down

Exterior

- Tires, front P275/35ZR18 Eagle F1 Supercar extended mobility
- Tires, rear P325/30ZR19 Eagle F1 Supercar extended mobility
- Wheels, Grand Sport Silver painted aluminum 18" x 9.5" (45.7 cm x 24.1 cm) front and 19" x 12" (48.3 cm x 30.48 cm) rear
- Fog lamps, front, integral in front fascia- Glass, Solar-Ray light-tinted
- Headlamps, dual projector lamps, Xenon, High-Intensity Discharge (HID) low-beam tungsten-halogen high-beam with automatic exterior lamp control
- Mirrors, outside heated power-adjustable and driver-side auto-dimming, body- color
- Roof panel, 1-piece body-color, removable- Wipers, front intermittent

Safety

- Air conditioning, dual-zone automatic climate control with individual climate settings for driver and right-front passenger and outside temperature display
- Air filtration system with pollen filter- Cargo net and luggage shade
- Console, floor 2 covered cup holders, ashtray with cigar lighter, auxiliary power outlet and CD storage
- Cruise control, electronic with set and resume speed - Defogger, rear-window, electric
- Door locks, power programmable with lockout protection- Floor mats, carpeted
- Hatch release, push button open with power hatch pulldown
- Head-Up Display with dot-matrix readouts for street mode, track mode with g-meter, vehicle speed, engine rpm and readings from key gauges including water temperature

Option Packages

Factory Installed Packages

ENGINE, 6.2L V8 SFI

(430 hp [320.6 kW] @ 5900 rpm, 424 lb-ft of torque [572.4 N-m] @ 4600 rpm)

TRANSMISSION, 6-SPEED PADDLE SHIFT WITH AUTOMATIC MODES

\$1,250

REAR AXLE, 2.73 RATIO, LIMITED-SLIP, PERFORMANCE

EMISSIONS, FEDERAL REQUIREMENTS

VELOCITY YELLOW TINTCOAT

\$850

STANDARD PAINT

PREFERRED EQUIPMENT GROUP

includes Standard Equipment

\$4,205

AUDIO SYSTEM WITH NAVIGATION, AM/FM STEREO WITH CD PLAYER, MP3 PLAYBACK AND DVD-BASED TOUCH-SCREEN NAVIGATION

seek-and-scan, digital clock, auto-tone control, Radio Data System (RDS), automatic volume, TheftLock, 6.5" LCD color display and voice recognition.

\$1,750

EBONY, LEATHER SEATING SURFACES

SEATS, SPORT FRONT BUCKET WITH PERFORATED LEATHER SEATING SURFACES

includes back angle adjustment, adjustable lumbar and side bolsters

Option Packages Total

\$8,055

- and oil pressure
- Instrumentation, electronic analog with Driver Information Center and 2-line display
- Keyless Access with push button start and 2 remote transmitters that enable automatic door unlock and open by touching door switch
- Lighting, interior with courtesy, cargo and glovebox
- Memory Package, recalls 2 driver "presets" for 6-way power seat, outside mirrors and telescoping steering column
- Mirror, inside rearview auto-dimming with compass, includes dual reading lights
- Oil life monitoring system- Seat adjuster, driver 6-way power
- Seat adjuster, front passenger 6-way power
- Seat adjusters, power bolster and power lumbar
- Seats, Sport front bucket with perforated leather seating surfaces includes back angle adjustment, adjustable lumbar and side bolsters
- Seats, heated driver and front passenger
- Steering column, power telescopic with manual tilt
- Steering wheel controls, mounted audio controls
- Steering wheel, 3-spoke leather-wrapped
- Storage, with lockable glovebox, center console and 2 rear compartments with covers (Only includes 1 rear storage compartment with manual transmission.)
- Theft-deterrent system, vehicle push button start, immobilizer and audible visual alarm
- Universal Home Remote includes garage door opener, 3-channel programmable, located on driver visor
- Visors, driver and front passenger illuminated vanity mirrors
- Windows, power with driver and passenger Express-Down

Mechanical

- Rear axle, 3.42 ratio, limited slip (Included and only available with (MN6) 6-speed manual transmission.)
- Brakes, 4-wheel antilock, 4-wheel disc- Engine access, rear-opening hood
- Engine, 6.2L V8 SFI (430 hp [320.6 kW] @ 5900 rpm, 424 lb-ft of torque [572.4 N-m] @ 4600 rpm)
- Exhaust, aluminized stainless-steel with 3" polished stainless-steel tips
- Rear wheel drive- Steering, power, speed-sensitive rack-and-pinion, variable ratio
- Transmission, 6-speed manual, short-throw includes launch control, specific gearing and quicker ratios



Auto Park Dallas

View this car on our website at autoparkdallas.com/7079490

Website: autoparkdallas.com

Phone: (214) 945-2601

Map: [2061 S Stemmons Fwy, Lewisville, TX 75067](#)

