



## 1992 Nissan 300ZX

**Danny Diedrich 602-513-3298**

**Our Price \$19,950**

**Retail Value \$22,950**

View this vehicle on our website at [arizonaclassiccarsales.com](http://arizonaclassiccarsales.com)

Arizona Classic Car Sales

[602-513-3298](tel:602-513-3298)

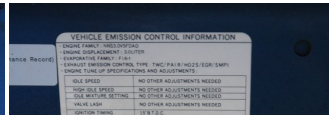
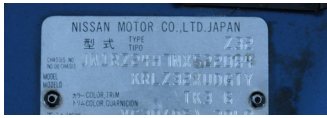
2010 W. Parkside Ln. #118 , Phoenix, AZ 85027

Photos

Details

Contact





### Specifications:

<b>Year:</b>	1992
<b>VIN:</b>	<a href="#">JN1RZ24H7NX522084</a>
<b>Make:</b>	Nissan
<b>Stock:</b>	522084
<b>Model/Trim:</b>	300ZX
<b>Condition:</b>	Pre-Owned
<b>Body:</b>	Coupe
<b>Exterior:</b>	Blue
<b>Engine:</b>	V-6 3000
<b>Interior:</b>	Black
<b>Transmission:</b>	5-Speed Manual
<b>Mileage:</b>	124,824
<b>Drivetrain:</b>	Rear Wheel Drive

## Vehicle Description

# Installed Options

## Interior

- Bose system ETR AM/FM stereo w/auto-reverse cassette/4-speakers - Cloth seat trim
- Driver's 7-way adjustable seat w/3-position lumbar
- Driver's pwr 7-way adjustable seat w/3-position lumbar
- ETR AM/FM stereo/auto-reverse cassette/4-speakers- 2 passenger seating
- Analog style speedometer/tachometer/trip odometer/coolant temp/oil pressure/ fuel level gauges
- Auto temperature control air conditioning system
- Automatic pwr antenna w/diversity system- Automatic theft deterrent system
- Carpeted cargo area w/retractable cover- Center console- Cruise control
- Cut-pile passenger area carpeting- Digital quartz clock- Dual overhead maplights
- Energy absorbing steering column
- Interior courtesy lights (cigarette lighter/ashtray/rear cargo area/illum entry system w/fade-out feature)
- Leather-wrapped steering wheel/shift knob- Lockable glovebox
- Low fuel/door ajar/front seatbelt warning lights- Passenger side visor vanity mirror
- Pwr door locks/windows w/driver window 1-touch down feature
- Rear window defroster w/timer- Reclining front bucket seats
- Remote hatch/hood/fuel-filler door releases- Side window defoggers

## Exterior

- T-bar roof w/removable glass panels
- 2-spnd wipers w/variable intermittent feature/twin stream washers
- 5-mph body-color front/rear energy absorbing bumpers- Body-color front air dam
- Center high-mount rear stoplight- Dual pwr remote-control heated mirrors (RH convex)
- Fully tinted glass w/dark upper windshield band - Integrated fog lights
- Projection-type low-beam halogen headlamps- Rear window wiper/washer

## Safety

- Bose system ETR AM/FM stereo w/auto-reverse cassette/4-speakers - Cloth seat trim
- Driver's 7-way adjustable seat w/3-position lumbar
- Driver's pwr 7-way adjustable seat w/3-position lumbar
- ETR AM/FM stereo/auto-reverse cassette/4-speakers- 2 passenger seating
- Analog style speedometer/tachometer/trip odometer/coolant temp/oil pressure/ fuel level gauges
- Auto temperature control air conditioning system
- Automatic pwr antenna w/diversity system- Automatic theft deterrent system
- Carpeted cargo area w/retractable cover- Center console- Cruise control
- Cut-pile passenger area carpeting- Digital quartz clock- Dual overhead maplights
- Energy absorbing steering column
- Interior courtesy lights (cigarette lighter/ashtray/rear cargo area/illum entry system w/fade-out feature)
- Leather-wrapped steering wheel/shift knob- Lockable glovebox
- Low fuel/door ajar/front seatbelt warning lights- Passenger side visor vanity mirror
- Pwr door locks/windows w/driver window 1-touch down feature
- Rear window defroster w/timer- Reclining front bucket seats
- Remote hatch/hood/fuel-filler door releases- Side window defoggers

## Mechanical

- 5-speed manual OD transmission
- Elect controlled 4-speed automatic OD transmission w/lock-up torque converter
- Vented pwr 4-wheel disc brakes w/anti-lock braking system (ABS)
- 16" X 7.5" cast aluminum alloy wheels - 19.0 gallon fuel tank
- 3.0L DOHC SFI 24 valve V6 engine
- 4-wheel indep suspension, multi-link w/upper links/lower A-arms/coil springs/ hydraulic shock absorbers & front/rear stabilizer bars
- 65-amp low-maintenance battery- 80-amp alternator- Direct ignition system
- Elect spd-sensitive pwr rack & pinion steering
- P225/50VR16 RBL high performance SBR tires- Quad chrome-tipped exhaust finishers
- Rear wheel drive- Viscous ltd slip differential

View this car on our website at [arizonaclassiccarsales.com/7077979](https://arizonaclassiccarsales.com/7077979)

Website: [arizonaclassiccarsales.com](https://arizonaclassiccarsales.com)

Phone: [602-513-3298](tel:602-513-3298)

Map: [2010 W. Parkside Ln. #118, Phoenix, AZ 85027](#)

