

2016 Ram 2500 Tradesman

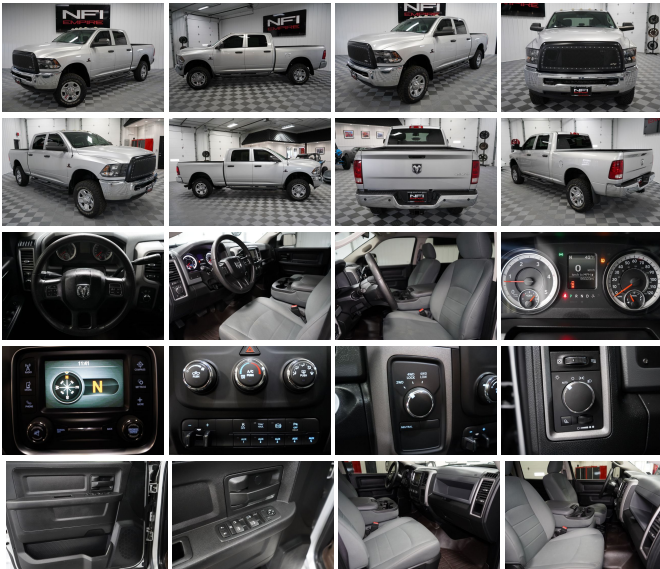
View this car on our website at 30c54b61-2e18-4534-b347-5367e7a27956.autorevo-websites.com/7077566/ebrochure



Our Price **\$44,991**

Specifications:

Year:	2016
VIN:	3C6UR5CL1GG107503
Make:	Ram
Stock:	N3024
Model/Trim:	2500 Tradesman
Condition:	Pre-Owned
Body:	Pickup Truck
Exterior:	Gray
Engine:	6.7L I6 CUMMINS TURBO DIESEL
Interior:	Gray
Mileage:	99,309
Drivetrain:	4 Wheel Drive



2016 Dodge RAM 2500 Tradesman

A three-quarter ton pickup with a crew cab has the space and power to get work done. Including the front bench seat this RAM seats six. Be it for family or cargo, that's a comfortable amount of room-especially in a heavy duty pickup. A couple of aftermarket additions round out a more aggressive look than came off the assembly line: and EAG mesh grill in the front removes the chrome RAM badge, and some Tyger assist steps flank the sides.

This RAM is driven by a 6.7L 6-cyl that produces 370 hp and 800 lb-ft of torque and can pull up to 11,500lbs. Brand-new Goodyear Wrangler 33"s are wrapped around the Dodge alloy wheels. Come take it for a spin today.

*CARFAX CERTIFIED *FULLY SERVICED *CALL 814-746-4213 NOW FOR DETAILS AND MOST RECENT PRICING *NFI EMPIRE IS LOCATED AT 10120 WEST MAIN ROAD NORTH EAST PA 16428, 20 MINUTES FROM ERIE PA *WARRANTIES AVAILABLE!

We offer:

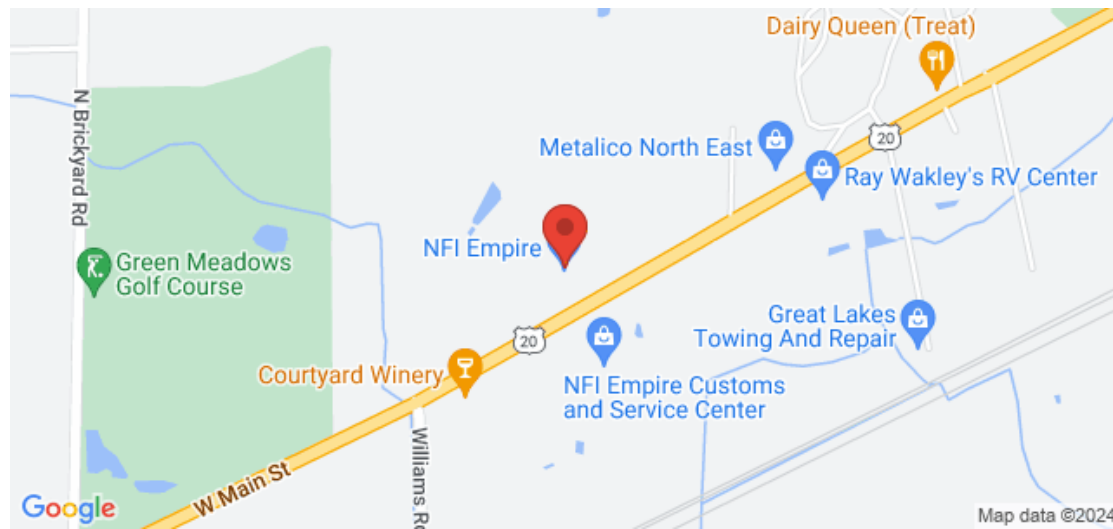
- Financing: Secure online application
- Virtual Test Drives: Buy from the comfort of your home
- Global Shipping
- Take Trade-Ins
- Full Service Garage
- PA State Inspection Facility
- Parts and Accessories Shop

Come in today and Drive Something Cool!

2016 Ram 2500 Tradesman

NFI Empire - 814-746-4213 - View this car on our website at 30c54b61-2e18-4534-b347-5367e7a27956.autorevo-websites.com/7077566/ebrochure

Our Location :



2016 Ram 2500 Tradesman

NFI Empire - 814-746-4213 - View this car on our website at 30c54b61-2e18-4534-b347-5367e7a27956.autorevo-websites.com/7077566/ebrochure

Installed Options

Exterior

- Original Paint- Detailed Ext and Int

Audio

- AM/FM- Anti-Theft

Comfort

- AC- Cruise- Power Locks- Power Windows- Tint- Tilt- Power Steering- Power Mirrors
- Child Safety Locks

Mechanical

- 4-Wheel Drive- Tow Package- 4-Wheel Disc Brakes- Turbocharged- Diesel Fuel
- Front Tow Hooks

Safety

- Anti-Lock Brakes- Dual Front Airbags- Side Airbags- Traction Control- Variable Wipers
- Drivers Front Airbag- Passenger Air Bag On/Off- Side Head Air Bag- Rear Head Air Bag
- Tire Pressure Monitoring

NFI Empire

30c54b61-2e18-4534-b347-5367e7a27956.autorevo-websites.com

814-746-4213

10120 W Main Rd

North East, PA 16428

© 2024 AutoRevo - All rights reserved. - Powered by AutoRevo