

## 2017 Chevrolet Colorado 4WD LT

View this car on our website at [legendmotorcarscarrollton.com/7077204/ebrochure](http://legendmotorcarscarrollton.com/7077204/ebrochure)



Sale Price **\$27,509**

### Specifications:

<b>Year:</b>	2017
<b>VIN:</b>	1GCGTCENXH1278583
<b>Make:</b>	Chevrolet
<b>Stock:</b>	C2019
<b>Model/Trim:</b>	Colorado 4WD LT
<b>Condition:</b>	Pre-Owned
<b>Body:</b>	Pickup Truck
<b>Exterior:</b>	Summit White
<b>Engine:</b>	3.6L V6
<b>Interior:</b>	Jet Black Cloth
<b>Mileage:</b>	82,234
<b>Drivetrain:</b>	4 Wheel Drive
<b>Economy:</b>	City 17 / Highway 24

Navigation with Bose Audio

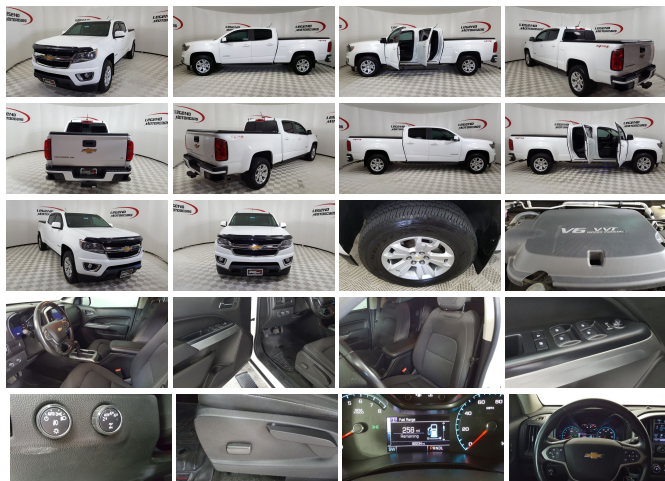
Bedliner and Folding Soft Tonneau

Safety Package with Collision avoidance and Lane Departure

Power Running Boards

Sliding Rear Window

Heavy Duty Trailer Tow



2017 Chevrolet Colorado 4WD LT

Legend Motorcars of Carrollton - 972-885-3268 - View this car on our website at [legendmotorcarscarrollton.com/7077204/ebrochure](http://legendmotorcarscarrollton.com/7077204/ebrochure)

## Vehicle History Report : as Of 02/02/2023



### Snapshot

#### 2017 CHEVROLET COLORADO LT



No accidents or damage reported to CARFAX



Regular oil changes



CARFAX 1-Owner vehicle



Personal vehicle



Last owned in Texas



75,136 Last reported odometer reading



**FREE CARFAX Report**

See the full CARFAX Report for additional information

\*carfax Snapshot is a reflection of available information on the date the report was pulled. carfax is constantly being updated with new information and is subject to change at any time.

## Our Location :



2017 Chevrolet Colorado 4WD LT

Legend Motorcars of Carrollton - 972-885-3268 - View this car on our website at [legendmotorcarscarrollton.com/7077204/ebrochure](http://legendmotorcarscarrollton.com/7077204/ebrochure)

## Installed Options

### Interior

- Air conditioning, single-zone manual climate control
- Charging ports, 2, USB, located on the rear of the center console
- Console, floor, front compartment, custom- Console, overhead
- Cruise control, electronic, automatic
- Display, driver instrument information enhanced, multi-color- Door locks, power
- Floor covering, color-keyed carpeting- Floor mats, carpeted front
- Floor mats, carpeted rear- Handles, door release, front and rear, Chrome
- Lighting, interior, dual reading
- Lighting, interior, roof, rear courtesy and dual reading lights (Crew Cab models only.)
- Mirror, inside rearview manual day/night- Remote Keyless Entry, extended range
- Seat adjuster, driver 4-way power with manual recline
- Seat adjuster, passenger 2-way manual fore/aft with manual recline
- Seat, rear folding bench (Crew Cab models only.) - Seats, front bucket
- Speedometer, miles/kilometers- Steering column, tilt and telescopic
- Steering wheel controls, mounted audio controls- Steering wheel, leather-wrapped
- Theft-deterrent system, immobilization- Theft-deterrent system, unauthorized entry
- Visors, driver and front passenger illuminated sliding vanity mirrors

- Windows, power with driver Express-Up and Down

## Exterior

- Bumper, rear body-color (Deleted when (TGM) Special Paint is ordered.)
- Cargo box light, back of cab - CornerStep, rear bumper- Door handles, body-color
- Glass, windshield shade band- Headlamps, halogen with automatic exterior lamp control
- Mirror, spotter, located in corner of driver-side outside mirror
- Mirrors, outside power-adjustable, body-color, manual-folding- Moldings, Chrome beltline
- Pickup box
- Recovery hooks, front (Deleted when (PDZ) Chrome Appearance Package, LPO is ordered.)
- Tailgate handle, Black- Tailgate, locking
- Tire, spare P265/70R16 all-season, blackwall (Included and only available with (S1K) 16" x 7" (40.6 cm x 17.8 cm) steel spare wheel.)
- Tires, P255/65R17 all-season, blackwall
- Wheel, spare, 16" x 7" (40.6 cm x 17.8 cm) steel (Requires (LGZ) 3.6L DI DOHC V6 engine (LWN) 2.8L Duramax Turbo-Diesel engine on Crew Cab Short Box. Standard on Crew Cab Long Box.)
- Wheels, 17" x 8" (43.2 cm x 20.3 cm) Blade Silver Metallic cast aluminum

## Safety

- Air conditioning, single-zone manual climate control
- Charging ports, 2, USB, located on the rear of the center console
- Console, floor, front compartment, custom- Console, overhead
- Cruise control, electronic, automatic
- Display, driver instrument information enhanced, multi-color- Door locks, power
- Floor covering, color-keyed carpeting- Floor mats, carpeted front
- Floor mats, carpeted rear- Handles, door release, front and rear, Chrome
- Lighting, interior, dual reading
- Lighting, interior, roof, rear courtesy and dual reading lights (Crew Cab models only.)
- Mirror, inside rearview manual day/night- Remote Keyless Entry, extended range
- Seat adjuster, driver 4-way power with manual recline
- Seat adjuster, passenger 2-way manual fore/aft with manual recline
- Seat, rear folding bench (Crew Cab models only.) - Seats, front bucket
- Speedometer, miles/kilometers- Steering column, tilt and telescopic
- Steering wheel controls, mounted audio controls- Steering wheel, leather-wrapped
- Theft-deterrent system, immobilization- Theft-deterrent system, unauthorized entry
- Visors, driver and front passenger illuminated sliding vanity mirrors
- Windows, power with driver Express-Up and Down

## Mechanical

- Brakes, 4-wheel antilock, 4-wheel disc
- Engine, 3.6L DI DOHC V6 VVT (308 hp [230.0 kW] @ 6800 rpm, 275 lb-ft of torque [373 N-m] @ 4000 rpm) (Standard on Crew Cab models.)
- Four wheel drive
- GVWR, 6000 lbs. (2722 kg) (Standard on Crew Cab models with (LGZ) 3.6L DI DOHC V6 engine only.)
- Rear axle, 3.42 ratio (Requires (LGZ) 3.6L DI DOHC V6 engine or (LWN) 2.8L Duramax Turbo-Diesel engine on Crew Cab Short Box models. Standard on Crew Cab Long Box models.)
- Tow/Haul Mode (Included and only available with (LGZ) 3.6L DI DOHC V6 engine or (LWN) 2.8L Duramax Turbo- Diesel engine. Standard on Crew Cab Long Box.)
- Transfer case, electric, 2-speed AutoTrac
- Transmission, 8-speed automatic (Requires (LGZ) 3.6L DI DOHC V6 engine. Standard on Crew Cab models. Available on Extended Cab models.)

## Option Packages

### Factory Installed Packages

ENGINE, 3.6L DI DOHC V6 VVT  
(308 hp [230.0 kW] @ 6800 rpm,  
275 lb-ft of torque [373 N-m]  
@ 4000 rpm)

AUDIO SYSTEM FEATURE, BOSE  
PREMIUM 7-SPEAKER SYSTEM  
\$500

BEDLINER, SPRAY-ON, BLACK WITH CHEVROLET LOGO	\$475
-	
DIFFERENTIAL, AUTOMATIC LOCKING REAR	\$325
-	
FORWARD COLLISION ALERT	
-	
LPO, SIDE WINDOW WEATHER DEFLECTOR	\$180
-	
LPO, SOFT FOLDING TONNEAU COVER	\$595
-	
LT CONVENIENCE PACKAGE	\$690
includes (C49) rear window defogger, (A28) rear-sliding window, (T3U) front fog lamps, (BTV) Remote vehicle starter system and (PPA) EZ-Lift tailgate	
-	
SAFETY PACKAGE	\$395
includes (UEU) Forward Collision Alert and (UFL) Lane Departure Warning	
-	
TRAILERING PACKAGE, HEAVY-DUTY	\$250
includes trailer hitch and 7-pin connector	
-	
SUMMIT WHITE	
-	
AUDIO SYSTEM, CHEVROLET MYLINK RADIO WITH NAVIGATION AND 8" DIAGONAL COLOR TOUCH-SCREEN, AM/FM STEREO	\$495
seek-and-scan and digital clock, includes Bluetooth streaming audio for music and select phones; voice-activated technology for radio and phone; featuring Apple CarPlay capability for compatible phone; includes auxiliary jack	
-	
JET BLACK, CLOTH SEAT TRIM	
-	
Option Packages Total	\$3,905

Carrollton, TX 75006

© 2023 AutoRevo - All rights reserved. - Powered by AutoRevo