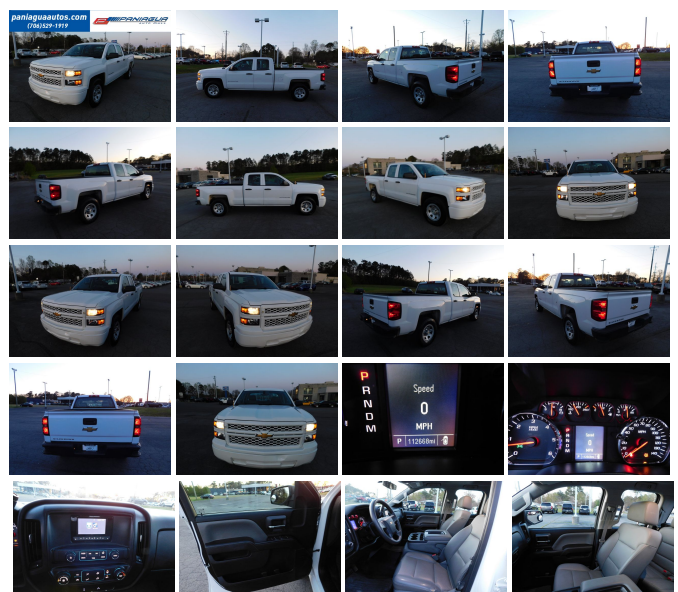


# 2015 Chevrolet Silverado 1500 Work Truck

View this car on our website at [paniaguaautos.com/7077016/ebrochure](http://paniaguaautos.com/7077016/ebrochure)



Our Price **\$18,995**

## Specifications:

- Year:** 2015
- VIN:** 1GCRCPEH3FZ341757
- Make:** Chevrolet
- Stock:** 8497
- Model/Trim:** Silverado 1500 Work Truck
- Condition:** Pre-Owned
- Body:** Pickup Truck
- Exterior:** White
- Engine:** ENGINE, 4.3L FLEXFUEL ECOTEC3 V6 WITH ACTIVE FUEL MANAGEMENT, DIRECT INJECTION AND VARIABLE VALVE TIMING
- Interior:** Gray Vinyl
- Transmission:** AUTOMATIC
- Mileage:** 112,668
- Drivetrain:** Rear Wheel Drive
- Economy:** City 18 / Highway 24

2015 CHEVROLET SILVERADO 1500 4.3L V6 AUTOMATIC NICE CLEAN VYNIL INTERIOR WORK READY STOP BY TODAY AND CHECK OUT OUR EXTENSIVE SELECTION OF TRUCKS WE HAVE MANY TO CHOOSE FROM

2015 Chevrolet Silverado 1500 Work Truck

Paniagua Auto Mall - 706-529-1919 & 423-472-4045 - View this car on our website at [paniaguaautos.com/7077016/ebrochure](http://paniaguaautos.com/7077016/ebrochure)

## Our Location :



2015 Chevrolet Silverado 1500 Work Truck

Paniagua Auto Mall - 706-529-1919& 423-472-4045 - View this car on our website at [paniaguaautos.com/7077016/ebrochure](http://paniaguaautos.com/7077016/ebrochure)

## Installed Options

### Interior

- Air conditioning, single-zone- Assist handle, front passenger on A-pillar
- Cruise control, electronic with set and resume speed, steering wheel-mounted
- Door locks, power
- Driver Information Center, 3.5-inch diagonal monochromatic display provides warning messages and basic vehicle information
- Floor covering, Graphite-colored rubberized-vinyl, no floor mats included
- Instrumentation, 6-gauge cluster featuring speedometer, fuel level, engine temperature, tachometer, voltage and oil pressure
- Seat, rear full-width folding bench, 3-passenger (includes child seat top tether anchor)
- Seats, front 40/20/40 split-bench, 3-passenger, driver and front passenger manual recline with outboard head restraints and center fold-down armrest with storage. Vinyl has fixed lumbar and cloth has manual adjustable driver lumbar.
- Steering column, Tilt-Wheel, manual with theft-deterrent locking feature
- Windows, power front and rear with driver express up and down and express down on all other windows

### Exterior

- Bumpers, front, Black- Bumpers, rear, Black- CornerStep, rear bumper
- Door handles, Black- Glass, solar absorbing, tinted- Headlamps, halogen reflector
- Lamps, cargo area, cab mounted with switch on center switch bank
- Mirrors, outside manual, Black- Tailgate and bed rail protection cap, top
- Tailgate, locking utilizes same key as ignition and door
- Tire carrier lock, keyed cylinder lock that utilizes same key as ignition and door
- Tire, spare P255/70R17 all-season, blackwall (Included and only available with (RBZ) P255/70R17 all-season, blackwall tires.)
- Tires, P255/70R17 all-season, blackwall- Wheel, full-size spare, 17" (43.2 cm) steel
- Wheels, 17" x 8" (43.2 cm x 20.3 cm) painted steel

### Safety

- Air conditioning, single-zone- Assist handle, front passenger on A-pillar
- Cruise control, electronic with set and resume speed, steering wheel-mounted
- Door locks, power
- Driver Information Center, 3.5-inch diagonal monochromatic display provides warning messages and basic vehicle information
- Floor covering, Graphite-colored rubberized-vinyl, no floor mats included
- Instrumentation, 6-gauge cluster featuring speedometer, fuel level, engine temperature, tachometer, voltage and oil pressure
- Seat, rear full-width folding bench, 3-passenger (includes child seat top tether anchor)
- Seats, front 40/20/40 split-bench, 3-passenger, driver and front passenger manual recline with outboard head restraints and center fold-down armrest with storage. Vinyl has fixed lumbar and cloth has manual adjustable driver lumbar.
- Steering column, Tilt-Wheel, manual with theft-deterrent locking feature
- Windows, power front and rear with driver express up and down and express down on all other windows

## Mechanical

- Alternator, 150 amps
- Battery, heavy-duty 730 cold-cranking amps/70 Amp-hr, maintenance-free with rundown protection and retained accessory power
- Body, Pick Up Box- Brakes, 4-wheel disc with DURALIFE rotors, 4-wheel antilock
- Cooling, external engine oil cooler
- Engine, 4.3L FlexFuel EcoTec3 V6 with Active Fuel Management, Direct Injection and Variable Valve Timing includes aluminum block construction with FlexFuel capability, capable of running on unleaded or up to 85% ethanol (285 hp [212 kW] @ 5300 rpm, 305 lb-ft of torque [413 Nm] @ 3900 rpm)
- Exhaust, aluminized stainless-steel muffler and tailpipe
- Frame, fully-boxed, hydroformed front section
- GVWR, 6900 lbs. (3130 kg) (Requires 2WD models and (LV3) 4.3L EcoTec3 V6 engine.)
- Rear axle, 3.23 ratio (Standard and only available on (LV3) 4.3L EcoTec3 V6 engine with 2WD models.)
- Rear wheel drive- Steering, Electric Power Steering (EPS) assist, rack-and-pinion
- Suspension Package, Handling/Trailerling
- Transmission, 6-speed automatic, electronically controlled with overdrive and tow/haul mode. Includes Cruise Grade Braking and Powertrain Grade Braking

## Option Packages

### Factory Installed Packages

-

**ENGINE, 4.3L FLEXFUEL ECOTEC3 V6 WITH ACTIVE FUEL MANAGEMENT, DIRECT INJECTION AND VARIABLE VALVE TIMING**

includes aluminum block construction with FlexFuel capability, capable of running on unleaded or up to 85% ethanol (285 hp [212 kW] @ 5300 rpm, 305 lb-ft of torque [413 Nm] @ 3900 rpm)

We sale used vehicles as is no warranty. We sale extended warranties ask one of our sales rep. for details.

Paniagua Auto Mall

[paniaguaautos.com](http://paniaguaautos.com)

706-529-1919& 423-472-4045

1776 E. Walnut Ave

Dalton, Georgia 30721

© 2023 AutoRevo - All rights reserved. - Powered by AutoRevo