

njtruckking.com
856-693-3181
1229 Broadway
Westville, New Jersey
08093

King of Cars and
Trucks

2019 FORD F550 XLT EXT CAB 4-DR 6.8L V10 4WD 2- CAR ROLLBACK W/ WHEELIFT LOW MILE

View this car on our website at njtruckking.com/7076753/ebrochure



Our Price **\$99,900**

Specifications:

Year: 2019
VIN: 1FD0X5HYXKEE93898
Make: FORD F550 XLT EXT CAB
Model/Trim: 4-DR 6.8L V10 4WD 2-CAR ROLLBACK W/ WHEELIFT LOW MILE
Condition: Pre-Owned
Body: Pickup Truck
Exterior: White
Engine: ENGINE: 6.8L 3-VALVE SOHC EFI NA V10
Interior: Gray Cloth
Mileage: 36,037
Drivetrain: 4 Wheel Drive

2019 FORD F-550 XLT 4WD

EXT CAB 4-DOOR

2-CAR ROLLBACK

6.8L V10 GAS

AUTOMATIC TRANSMISSION

(ONLY 36,037 ORIGINAL / ACTUAL MILES)

XLT ALL POWER OPTIONS

JERR-DAN STEEL BED W/ REMOVABLE RAILS

WHEEL LIFT

RUNS AND DRIVES EXCELLENT

ALCOAS

DUAL TOOLBOX

DUAL CONTROLS

READY TO WORK!

WILL NOT LAST !

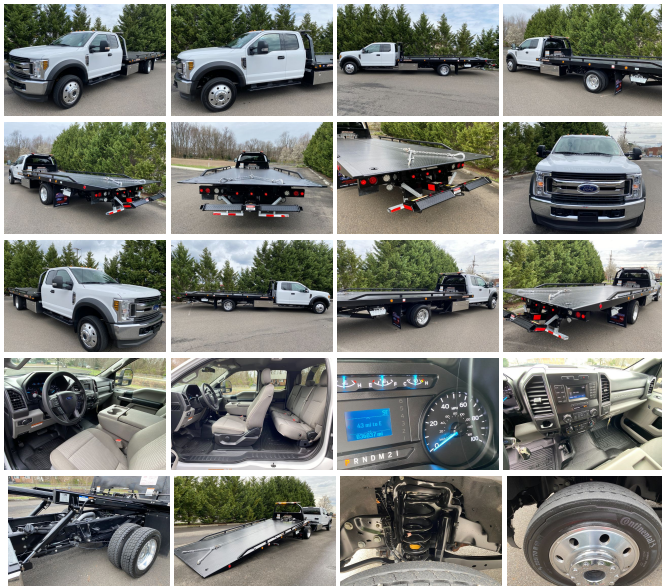
DONT MISS IT!

NONE AVAILABLE

BUY IT NOW

\$99,900

CALL / TEXT ROB 856-381-6621



Our Location :



2019 FORD F550 XLT EXT CAB 4-DR 6.8L V10 4WD 2-CAR ROLLBACK W/ WHEELIFT LOW MILE
King of Cars and Trucks - 856-693-3181 - View this car on our website at njtruckking.com/7076753/ebrochure

Installed Options

Interior

- Cloth 40/20/40 Split Bench Seat -inc: 20% center under-seat storage, center armrest, cupholder, storage, 4-way adjustable driver/passenger headrests and driver's side manual lumbar
- Driver And Passenger Visor Vanity Mirrors
- Full Carpet Floor Covering -inc: Carpet Front And Rear Floor Mats
- Gauges -inc: Speedometer, Odometer, Oil Pressure, Engine Coolant Temp, Tachometer, Transmission Fluid Temp, Engine Hour Meter, Trip Odometer and Trip Computer
- Power 1st Row Windows w/Driver And Passenger 1-Touch Up/Down - Power Door Locks
- Power Rear Windows
- Remote Keyless Entry w/Integrated Key Transmitter, Illuminated Entry and Panic Button
- Trip Computer- 2 Seatback Storage Pockets- 3 12V DC Power Outlets
- 4-Way Driver Seat -inc: Manual Recline and Fore/Aft Movement
- 4-Way Passenger Seat -inc: Manual Recline and Fore/Aft Movement
- 60-40 Folding Split-Bench Front Facing Fold-Up Cushion Rear Seat - Air Filtration
- Analog Appearance- Cruise Control w/Steering Wheel Controls
- Day-Night Rearview Mirror- Delayed Accessory Power- Fade-To-Off Interior Lighting
- Front Map Lights- Full Cloth Headliner
- Full Overhead Console w/Storage and 3 12V DC Power Outlets
- HVAC -inc: Underseat Ducts- Illuminated Locking Glove Box
- Instrument Panel Covered Bin, Dashboard Storage, Driver / Passenger And Rear Door Bins
- Interior Trim -inc: Metal-Look Instrument Panel Insert and Chrome Interior Accents
- Manual Adjustable Rear Head Restraints- Manual Air Conditioning
- Manual Tilt/Telescoping Steering Column- Outside Temp Gauge- Perimeter Alarm
- Rear Cupholder- Securilock Anti-Theft Ignition (pats) Engine Immobilizer
- Systems Monitor- Underhood Lights- Urethane Gear Shifter Material

Exterior

- Auto On/Off Aero-Composite Halogen Daytime Running Lights Preference Setting Headlamps w/Delay-Off

Option Packages

Factory Installed Packages

ENGINE: 6.8L 3-VALVE SOHC EFI NA V10

- Black Power Heated Side Mirrors w/Convex Spotter, Manual Folding and Turn Signal Indicator
- Privacy Glass
- Tires: 225/70Rx19.5G BSW A/P -inc: Optional spare is 225/70Rx19.5G BSW A/P
- Wheels: 19.5" Argent Painted Steel -inc: manual locking hubs - Aluminum Panels
- Black Door Handles- Black Fender Flares- Black Grille w/Chrome Accents
- Black Side Windows Trim and Black Front Windshield Trim - Cab Clearance Lights
- Chrome Front Bumper w/Body-Colored Rub Strip/Fascia Accent and 2 Tow Hooks
- Clearcoat Paint- Fixed Rear Window- Front License Plate Bracket- Front Splash Guards
- Manual Extendable Trailer Style Mirrors- Perimeter/Approach Lights
- Reverse Opening Rear Doors- Variable Intermittent Wipers

Safety

- Cloth 40/20/40 Split Bench Seat -inc: 20% center under-seat storage, center armrest, cupholder, storage, 4-way adjustable driver/passenger headrests and driver's side manual lumbar
- Driver And Passenger Visor Vanity Mirrors
- Full Carpet Floor Covering -inc: Carpet Front And Rear Floor Mats
- Gauges -inc: Speedometer, Odometer, Oil Pressure, Engine Coolant Temp, Tachometer, Transmission Fluid Temp, Engine Hour Meter, Trip Odometer and Trip Computer
- Power 1st Row Windows w/Driver And Passenger 1-Touch Up/Down - Power Door Locks
- Power Rear Windows
- Remote Keyless Entry w/Integrated Key Transmitter, Illuminated Entry and Panic Button
- Trip Computer- 2 Seatback Storage Pockets- 3 12V DC Power Outlets
- 4-Way Driver Seat -inc: Manual Recline and Fore/Aft Movement
- 4-Way Passenger Seat -inc: Manual Recline and Fore/Aft Movement
- 60-40 Folding Split-Bench Front Facing Fold-Up Cushion Rear Seat - Air Filtration
- Analog Appearance- Cruise Control w/Steering Wheel Controls
- Day-Night Rearview Mirror- Delayed Accessory Power- Fade-To-Off Interior Lighting
- Front Map Lights- Full Cloth Headliner
- Full Overhead Console w/Storage and 3 12V DC Power Outlets
- HVAC -inc: Underseat Ducts- Illuminated Locking Glove Box
- Instrument Panel Covered Bin, Dashboard Storage, Driver / Passenger And Rear Door Bins
- Interior Trim -inc: Metal-Look Instrument Panel Insert and Chrome Interior Accents
- Manual Adjustable Rear Head Restraints- Manual Air Conditioning
- Manual Tilt/Telescoping Steering Column- Outside Temp Gauge- Perimeter Alarm
- Rear Cupholder- Securilock Anti-Theft Ignition (pats) Engine Immobilizer
- Systems Monitor- Underhood Lights- Urethane Gear Shifter Material

Mechanical

- Transmission: TorqShift 6-Speed Automatic (6R140) -inc: SelectShift
- 10690# Maximum Payload
- 4-Wheel Disc Brakes w/4-Wheel ABS, Front And Rear Vented Discs and Brake Assist
- 4.88 Axle Ratio- 40 Gal. Fuel Tank- 50-State Emissions System
- 78-Amp/Hr 750CCA Maintenance-Free Battery w/Run Down Protection
- Dual Rear Wheels- Engine: 6.8L 3-Valve SOHC EFI NA V10- Firm Suspension
- Front And Rear Anti-Roll Bars- Front Suspension w/Coil Springs
- GVWR: 18,000 lbs Payload Package- HD 240 Amp Alternator- HD Shock Absorbers
- Hydraulic Power-Assist Steering- Leaf Rear Suspension w/Leaf Springs
- Manual Locking Hubs- Manual Transfer Case- Part-Time Four-Wheel Drive
- Single Stainless Steel Exhaust
- Towing Equipment -inc: Brake Controller and Trailer Sway Control - Trailer Wiring Harness
- Transmission w/Oil Cooler- Upfitter Switches

King of Cars and Trucks

njtruckking.com

856-693-3181

1229 Broadway

Westville, New Jersey 08093

© 2024 AutoRevo - All rights reserved. - Powered by AutoRevo