

# 2022 Jeep Gladiator Rubicon 4X4 DUPONT KEVLAR,LIFTED,BUMPERS,LED'S

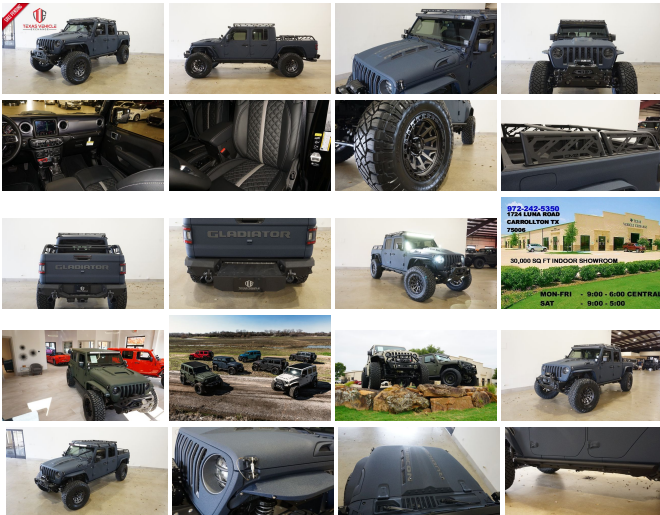
View this car on our website at [tveauto.com/7075472/ebrochure](https://tveauto.com/7075472/ebrochure)



Our Price **\$96,900**

## Specifications:

<b>Year:</b>	2022
<b>VIN:</b>	1C6JTBG0NL107642
<b>Make:</b>	Jeep
<b>Stock:</b>	107642
<b>Model/Trim:</b>	Gladiator Rubicon 4X4 DUPONT KEVLAR,LIFTED,BUMPERS,LED'S
<b>Condition:</b>	Pre-Owned
<b>Body:</b>	Pickup Truck
<b>Exterior:</b>	Blue
<b>Engine:</b>	ENGINE: 3.6L V6 24V VVT UPG I W/ESS
<b>Interior:</b>	Black Leather
<b>Transmission:</b>	TRANSMISSION: 8-SPEED AUTOMATIC (850RE)
<b>Mileage:</b>	52
<b>Drivetrain:</b>	4 Wheel Drive
<b>Economy:</b>	City 16 / Highway 22



NATION WIDE FINANCING

SUBMIT CREDIT APP [WWW.TVEAUTO.COM](https://www.tveauto.com)

OR CALL 972-242-5350

**"FERRARI NART BLUE EDITION"**

CUSTOM BUILT **KEVLAR** 2022 JEEP  
GLADIATOR RUBICON 4X4 WITH 24R  
PACKAGE

**UPGRADES INCLUDE:**

## UPGRADES INCLUDE:

- \* FERRARI NART BLUE KEVLAR COATING WITH ANTHRACITE ACCENTS
- \* CUSTOM ALEA BLACK LEATHER WITH SILVER STITCHING
- \* FACTORY REMOTE START
- \* REMOTE PROXIMITY KEYLESS ENTRY
- \* COLD WEATHER GROUP
- \* ACTIVE SAFETY GROUP
- \* TRAILER TOW PACKAGE
- \* FACTORY 8.4 INCH TOUCH SCREEN NAVIGATION WITH HD AM/FM/SIRIUS STEREO & ALPINE PREMIUM AUDIO SYSTEM
- \* FACTORY BACK-UP CAMERA
- \* U-CONNECT
- \* DV8 OFF ROAD JT FRONT MODULAR BUMPER WITH LED FOGLIGHTS
- \* FRONT D-RINGS & ISOLATORS (ANTHRACITE)
- \* DV8 OFF ROAD 12,000 LB WINCH WITH SYNTHETIC ROPE
- \* FACTOR 55 PROLINK (BLACK)
- \* FACTORY LED HEADLIGHTS
- \* RUGGED RIDGE BLACK HEADLIGHT GUARDS
- \* DV8 OFF ROAD HEAT EXPULSION HOOD
- \* DRAKE OFF ROAD HOOD LATCHES
- \* DV8 OFF ROAD JT SLIM STEEL FENDER FLARES
- \* DV8 OFF ROAD FRONT & REAR INNER FENDERS
- \* RUBICON EXPRESS 3.5" SUSPENSION LIFT KIT WITH TERAFLEX FALCON SHOCKS
- \* TERAFLEX FALCON STABILIZER KIT

- \* MOPAR AUXILIARY SWITCH BANK KIT
- \* DV8 OFF ROAD 50" LED LIGHT BAR AND 4 DV8 OFF ROAD LED POD LIGHTS
- \* DV8 OFF ROAD JT ROOF RACK
- \* DV8 OFF ROAD JT BLACK ROCK SLIDERS WITH STEP
- \* DV8 OFF ROAD JT ADJUSTABLE OVERLAND BED RACK
- \* SPRAY IN BEDLINER
- \* ORACLE FLUSH MOUNT LED TAIL LIGHTS
- \* DV8 OFF ROAD JT REAR BUMPER WITH DRAWER & REAR PARK DISTANCE SENSORS
- \* REAR D-RINGS & ISOLATORS (ANTHRACITE)
- \* MAGNAFLOW CAT-BACK BLACK EXHAUST SYSTEM
- \* ALL WEATHER FLOOR MATS
- \* TAZER JL PROGRAMMER WITH SPEEDOMETER CALIBRATION
- \* 20" FUEL MATTE ANTHRACITE W/BLACK RING "COVERT" WHEELS
- \* BRAND NEW NITTO RIDGE GRAPPLER 38X13.50R/20 TIRES

**WE BUILD EVERY JEEP WITH PRIDE! DO NOT HESITATE TO CALL US WITH THIS JEEP BUILD. WE CAN MAKE CHANGES TO THIS JEEP BUILD OR CUSTOM BUILD ANY JEEP TO YOUR PREFERENCE. GIVE US A CALL @ 972-242-5350 OR STOP BY FOR A TEST DRIVE. 1724 LUNA RD IN CARROLLTON - 2 MILES NORTH OF 635.**

## Our Location :



2022 Jeep Gladiator Rubicon 4X4 DUPONT KEVLAR,LIFTED,BUMPERS,LED'S  
Texas Vehicle Exchange - 972-242-5350 - View this car on our website at [veauto.com/7075472/ebrochure](http://veauto.com/7075472/ebrochure)

## Installed Options

### Interior

- 2 12V DC Power Outlets- 2 12V DC Power Outlets and 1 120V AC Power Outlet
- 2 Seatback Storage Pockets
- 4-Way Passenger Seat -inc: Manual Recline and Fore/Aft Movement
- 6-Way Driver Seat -inc: Manual Recline, Height Adjustment, Fore/Aft Movement and Manual Lumbar Support
- 60-40 Folding Split-Bench Front Facing Fold Forward Seatback Premium Cloth Rear Seat
- 97 MPH Vehicle Max Speed Calibration- Air Filtration- Analog Appearance- Compass
- Cruise Control w/Steering Wheel Controls- Day-Night Auto-Dimming Rearview Mirror
- Delayed Accessory Power
- Driver And Passenger Visor Vanity Mirrors w/Driver And Passenger Illumination
- Fade-To-Off Interior Lighting- Front And Rear Map Lights
- Front Center Armrest w/Storage
- Front Seats w/Cloth Back Material and Manual Driver Lumbar
- Full Carpet Floor Covering -inc: Carpet Front And Rear Floor Mats
- Full Floor Console w/Locking Storage, 2 12V DC Power Outlets and 1 120V AC Power Outlet
- Garage Door Transmitter
- Gauges -inc: Speedometer, Odometer, Voltmeter, Oil Pressure, Engine Coolant Temp, Tachometer, Inclinometer, Altimeter, Oil Temperature, Engine Hour Meter, Trip Odometer and Trip Computer
- HVAC -inc: Console Ducts- Illuminated Front Cupholder- Illuminated Rear Cupholder
- Instrument Panel Bin, Dashboard Storage, Driver / Passenger And Rear Door Bins
- Interior Trim -inc: Metal-Look Instrument Panel Insert, Metal-Look Door Panel Insert, Metal-Look Console Insert and Metal-Look Interior Accents
- Leather Steering Wheel- Locking Glove Box
- Manual Adjustable Front Head Restraints and Foldable Rear Head Restraints
- Manual Tilt/Telescoping Steering Column- Outside Temp Gauge- Perimeter Alarm
- Power 1st Row Windows w/Driver And Passenger 1-Touch Down
- Power Door Locks w/Autolock Feature- Power Rear Windows
- Premium Cloth Low Back Bucket Seats- Premium Key-Fob Doors And Buckle Release

- Premium Cloth Low-Back Bucket Seats- Proximity Key For Doors And Push Button Start
- Redundant Digital Speedometer
- Remote Keyless Entry w/Integrated Key Transmitter, Illuminated Entry and Panic Button
- Sentry Key Engine Immobilizer- Smart Device Integration- Systems Monitor
- Trip Computer- Urethane Gear Shifter Material
- Voice Activated Dual Zone Front Automatic Air Conditioning

---

## Exterior

- Steel Spare Wheel- Tailgate Rear Cargo Access
- Tailgate/Rear Door Lock Included w/Power Door Locks- Tires: LT285/70R17C BSW A/T
- Variable Intermittent Wipers- Wheels: 17" x 7.5" Granite Crystal Aluminum
- Removable Rear Window- Regular Box Style
- Manual Convertible Top w/Fixed Roll-Over Protection- Galvanized Steel/Aluminum Panels
- Full-Size Spare Tire Stored Underbody w/Crankdown- Front Fog Lamps
- Deep Tinted Glass- Clearcoat Paint w/Badging- Body-Color Grille w/Colored Accents
- Black Wheel Well Trim and Black Fender Flares- Black Side Windows Trim
- Black Rear Bumper w/2 Tow Hooks- Black Power Heated Side Mirrors w/Manual Folding
- Black Front Bumper w/2 Tow Hooks- Black Door Handles
- Auto On/Off Aero-Composite Halogen Daytime Running Headlamps w/Delay-Off

---

## Safety

- 2 12V DC Power Outlets- 2 12V DC Power Outlets and 1 120V AC Power Outlet
- 2 Seatback Storage Pockets
- 4-Way Passenger Seat -inc: Manual Recline and Fore/Aft Movement
- 6-Way Driver Seat -inc: Manual Recline, Height Adjustment, Fore/Aft Movement and Manual Lumbar Support
- 60-40 Folding Split-Bench Front Facing Fold Forward Seatback Premium Cloth Rear Seat
- 97 MPH Vehicle Max Speed Calibration- Air Filtration- Analog Appearance- Compass
- Cruise Control w/Steering Wheel Controls- Day-Night Auto-Dimming Rearview Mirror
- Delayed Accessory Power
- Driver And Passenger Visor Vanity Mirrors w/Driver And Passenger Illumination
- Fade-To-Off Interior Lighting- Front And Rear Map Lights
- Front Center Armrest w/Storage
- Front Seats w/Cloth Back Material and Manual Driver Lumbar
- Full Carpet Floor Covering -inc: Carpet Front And Rear Floor Mats
- Full Floor Console w/Locking Storage, 2 12V DC Power Outlets and 1 120V AC Power Outlet
- Garage Door Transmitter
- Gauges -inc: Speedometer, Odometer, Voltmeter, Oil Pressure, Engine Coolant Temp, Tachometer, Inclinometer, Altimeter, Oil Temperature, Engine Hour Meter, Trip Odometer and Trip Computer
- HVAC -inc: Console Ducts- Illuminated Front Cupholder- Illuminated Rear Cupholder
- Instrument Panel Bin, Dashboard Storage, Driver / Passenger And Rear Door Bins
- Interior Trim -inc: Metal-Look Instrument Panel Insert, Metal-Look Door Panel Insert, Metal-Look Console Insert and Metal-Look Interior Accents
- Leather Steering Wheel- Locking Glove Box
- Manual Adjustable Front Head Restraints and Foldable Rear Head Restraints
- Manual Tilt/Telescoping Steering Column- Outside Temp Gauge- Perimeter Alarm
- Power 1st Row Windows w/Driver And Passenger 1-Touch Down
- Power Door Locks w/Autolock Feature- Power Rear Windows
- Premium Cloth Low-Back Bucket Seats- Proximity Key For Doors And Push Button Start
- Redundant Digital Speedometer
- Remote Keyless Entry w/Integrated Key Transmitter, Illuminated Entry and Panic Button
- Sentry Key Engine Immobilizer- Smart Device Integration- Systems Monitor
- Trip Computer- Urethane Gear Shifter Material
- Voice Activated Dual Zone Front Automatic Air Conditioning

---

## Mechanical

- 1200# Maximum Payload- 22 Gal. Fuel Tank- 220 Amp Alternator
- 4-Wheel Disc Brakes w/4-Wheel ABS, Front And Rear Vented Discs, Brake Assist and Hill Hold Control
- 4.10 Rear Axle Ratio- 50 State Emissions
- 650CCA Maintenance-Free Battery w/Run Down Protection- 7 Skid Plates
- Auto Locking Hubs- Brake Actuated Limited Slip Differential
- Class II Towing Equipment -inc: Hitch and Trailer Sway Control
- Driver Selectable Front Locking Differential- Driver Selectable Rear Locking Differential
- Electro-Hydraulic Power Assist Steering- Engine Auto Stop-Start Feature
- Engine Oil Cooler- Engine: 3.6L V6 24V VVT UPG I w/ESS
- Fox Brand Name Shock Absorbers
- Front Active w/Driver Control Anti-Roll Bar and Rear Anti-Roll Bar- GVWR: 6,250 lbs
- Leading Link Front Suspension w/Coil Springs- Manual Transfer Case

- Part-Time Four-Wheel Drive- Performance Suspension- Single Stainless Steel Exhaust
- Trailer Wiring Harness- Trailing Arm Rear Suspension w/Coil Springs
- Transmission: 6-Speed Manual

## Option Packages

### Factory Installed Packages

ENGINE: 3.6L V6 24V VVT UPG I W/ESS

TRANSMISSION: 8-SPEED AUTOMATIC (850RE)

-inc: GPEC 5 Engine Controller, Tip Start, Transmission Skid Plate, Selec-Speed Control \$2,000

AUXILIARY SWITCH GROUP

-inc: 700 Amp Maintenance Free Battery, 240 Amp Alternator, Auxiliary Switches \$395

BLACK 3-PIECE HARD TOP

-inc: Freedom Panel Storage Bag, Rear Window Defroster, Rear Sliding Window \$1,695

COLD WEATHER GROUP

-inc: Heated Steering Wheel, Heated Front Seats \$1,145

SAFETY GROUP

-inc: ParkSense Rear Park Assist System, Blind Spot & Cross Path Detection, LED Taillamps \$1,095

TRAILER TOW PACKAGE

-inc: Trailer Hitch Zoom, Class IV Receiver Hitch, Heavy Duty Engine Cooling, 240 Amp Alternator \$645

4.10 REAR AXLE RATIO

QUICK ORDER PACKAGE 24R

-inc: Engine: 3.6L V6 24V VVT UPG I w/ESS, Transmission: 8-Speed Automatic (850RE)

Option Packages Total \$6,975

Texas Vehicle Exchange

[tveauto.com](http://tveauto.com)

972-242-5350

1724 Luna Road

Carrollton, TX 75006

© 2023 AutoRevo - All rights reserved. - Powered by AutoRevo