

paniaguaautos.com
(706)529-1919



2013 Chevrolet Captiva Sport Fleet LS

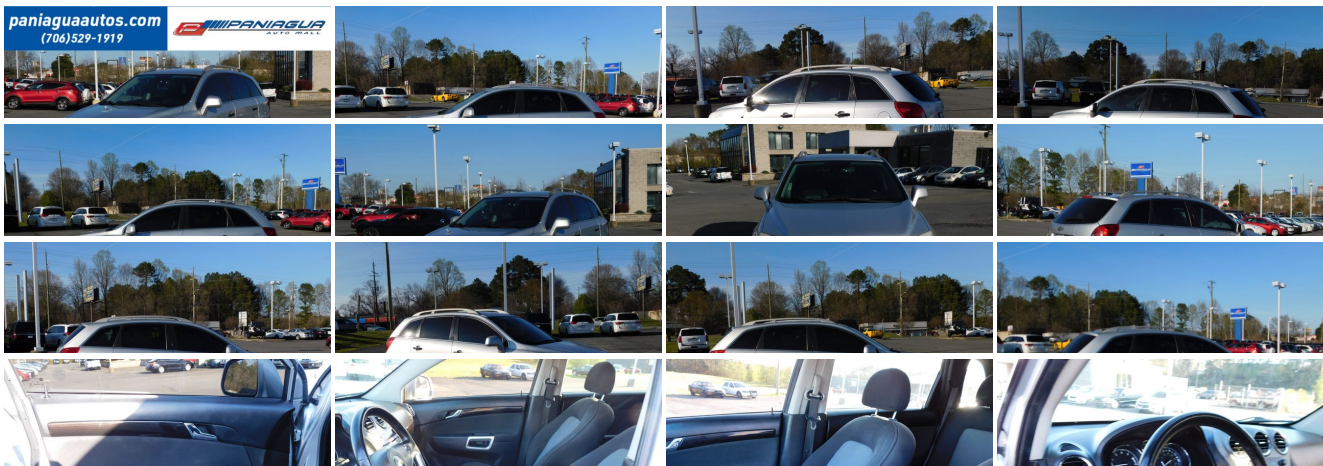
Our Price \$5,900

View this vehicle on our website at paniaguaautos.com



706-529-1919 & 423-472-4045
1776 E. Walnut Ave, Dalton, GA 30721

Photos
Details
Contact





Specifications:

Year:	2013
VIN:	3GNAL2EK3DS548159
Make:	Chevrolet
Stock:	8266
Model/Trim:	Captiva Sport Fleet LS
Condition:	Pre-Owned
Body:	SUV
Exterior:	Silver
Engine:	ENGINE, 2.4L DOHC 4-CYLINDER SIDI (SPARK IGNITION DIRECT INJECTION)
Interior:	Black Cloth
Transmission:	AUTOMATIC
Mileage:	141,158
Drivetrain:	Front Wheel Drive
Economy:	City 22 / Highway 28

Vehicle Description

2013 CHEVROLET CAPTIVA 2.4L 4 CYLINDER AUTOMATIC CLOTH INTERIOR ALL POWER HURRY IN TODAY AND CHECK OUT OUR MOST RECENT INVENTORY

Installed Options

Interior

- Door locks, power programmable
- Driver Information Center includes tire pressure monitor display, fuel economy range, instant fuel economy, oil life monitor, compass, outside temperature display, warning messages and personalization options
- Floor mats, carpeted front- Floor mats, carpeted rear- Remote Keyless Entry
- Seat trim, cloth- Seats, Deluxe front bucket
- Steering wheel controls, mounted audio controls
- Steering wheel, leather-wrapped with audio controls
- Air conditioning, single-zone automatic climate control
- Assist handles, front passenger and rear outboard- Cargo convenience net, rear
- Console, floor, Custom- Console, overhead- Cruise control- Defogger, rear-window
- Glovebox, non-locking- Head restraints, front, 2-way, active
- Instrumentation, analog standard- Map pocket, front seatback
- Mirror, inside rearview, self-dimming- Oil life monitor- Power outlets, 3 auxiliary, 12-volt
- Seat adjuster, 8-way power driver- Seat adjuster, driver manual lumbar control
- Seat, front passenger fold-down- Steering column, tilt and telescopic
- Theft-deterrent system, vehicle, PASS-Key III
- Visors, driver and front passenger illuminated vanity mirrors
- Windows, power with driver Express-Down

Exterior

- Wipers, front intermittent with washer- Door handles, Dark Graphite, mold-in-color
- Fascias, front and rear, Black- Fog lamps, front- Glass, tinted
- Headlamps, halogen with automatic exterior lamp control
- Luggage rack side rails, roof-mounted
- Mirrors, outside heated power-adjustable and driver-side auto-dimming, body-color
- Tire, compact spare with jack and tool kit
- Tires, P235/60R17 all-season, blackwall (Tire may be replaced at manufacturer's discretion at no additional charge.)
- Wheels, 4 - 17" x 7" (43.2 cm x 17.8 cm) painted aluminum
- Wiper, rear intermittent with washer

Safety

- Door locks, power programmable
- Driver Information Center includes tire pressure monitor display, fuel economy range, instant fuel economy, oil life monitor, compass, outside temperature display, warning messages and personalization options
- Floor mats, carpeted front- Floor mats, carpeted rear- Remote Keyless Entry
- Seat trim, cloth- Seats, Deluxe front bucket
- Steering wheel controls, mounted audio controls
- Steering wheel, leather-wrapped with audio controls
- Air conditioning, single-zone automatic climate control
- Assist handles, front passenger and rear outboard- Cargo convenience net, rear
- Console, floor, Custom- Console, overhead- Cruise control- Defogger, rear-window
- Glovebox, non-locking- Head restraints, front, 2-way, active
- Instrumentation, analog standard- Map pocket, front seatback
- Mirror, inside rearview, self-dimming- Oil life monitor- Power outlets, 3 auxiliary, 12-volt
- Seat adjuster, 8-way power driver- Seat adjuster, driver manual lumbar control
- Seat, front passenger fold-down- Steering column, tilt and telescopic
- Theft-deterrent system, vehicle, PASS-Key III
- Visors, driver and front passenger illuminated vanity mirrors
- Windows, power with driver Express-Down

Mechanical

- Transmission, 6-speed automatic- Axle, 3.23 final drive ratio
- Battery rundown protection- Brake, parking, electronically actuated
- Brakes, 4-wheel antilock, 4-wheel disc
- Engine, 2.4L DOHC 4-cylinder SIDI (Spark Ignition Direct Injection) with VVT (Variable Valve Timing) and E85 capability (180 hp [135.7 kW] @ 6700 rpm, 172 lb-ft of torque [232.2 N-m] @ 4900 rpm)
- Exhaust, single-outlet stainless-steel- Front wheel drive- GVWR, 4825 lbs. (2189 kg)
- Skid plates, painted front and rear- Steering, Hydraulic Power Steering (HPS) assist
- Suspension, Soft Ride

Option Packages

Factory Installed Packages

ENGINE, 2.4L DOHC 4-CYLINDER SIDI (SPARK IGNITION DIRECT INJECTION)
with VVT (Variable Valve Timing) and E85
capability (180 hp [135.7 kW] @ 6700 rpm, 172
lb-ft of torque [232.2 N-m] @ 4900 rpm)

We sale used vehicles as is no warranty. We sale extended warranties ask one of our sales rep. for details.

Paniagua Auto Mall

Paniagua Auto Mall

View this car on our website at paniaguaautos.com/7074784

Website: paniaguaautos.com

Phone: [706-529-1919](tel:706-529-1919) & [423-472-4045](tel:423-472-4045)

Map: [1776 E. Walnut Ave](#) , Dalton, GA 30721

