

# 2014 Chevrolet Silverado 1500 LT

View this car on our website at [paniaguaautos.com/7074130/ebrochure](http://paniaguaautos.com/7074130/ebrochure)

paniaguaautos.com  
(706)529-1919

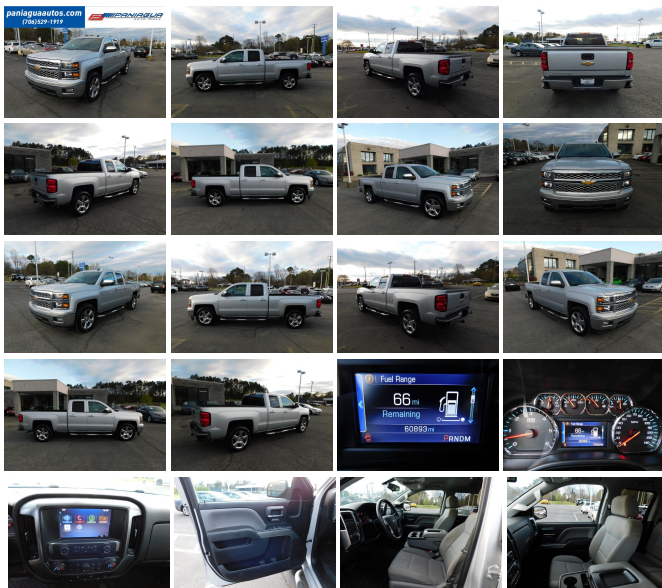


Our Price **\$28,900**

## Specifications:

**Year:** 2014  
**VIN:** 1GCRCREC6EZ411315  
**Make:** Chevrolet  
**Stock:** 8460  
**Model/Trim:** Silverado 1500 LT  
**Condition:** Pre-Owned  
**Body:** Pickup Truck  
**Exterior:** Silver  
**Engine:** ENGINE, 5.3L FLEXFUEL ECOTEC3 V8 WITH ACTIVE FUEL MANAGEMENT, DIRECT INJECTION AND VARIABLE VALVE TIMING  
**Interior:** Gray Cloth  
**Transmission:** AUTOMATIC  
**Mileage:** 60,893  
**Drivetrain:** Rear Wheel Drive  
**Economy:** City 16 / Highway 23

2014 CHEVROLET SILVERADO 1500 LT 5.3L V8 AUTOMATIC CLOTH INTERIOR ALL POWER STOP BY TODAY AND TAKE ADVANTAGE OF ALL OUR SPECIAL DEALS WE HAVE THE BEST PRICES IN TOWN COME SEE US SOON



2014 Chevrolet Silverado 1500 LT

Paniagua Auto Mall - 706-529-1919 & 423-472-4045 - View this car on our website at [paniaguaautos.com/7074130/ebrochure](http://paniaguaautos.com/7074130/ebrochure)

## Our Location :



2014 Chevrolet Silverado 1500 LT

Paniagua Auto Mall - 706-529-1919& 423-472-4045 - View this car on our website at [paniaguaautos.com/7074130/ebrochure](http://paniaguaautos.com/7074130/ebrochure)

## Installed Options

### Interior

- Air conditioning, single-zone- Assist handle, front passenger on A-pillar
- Cruise control, electronic with set and resume speed, steering wheel-mounted
- Door locks, power
- Driver Information Center, 4.2-inch diagonal color display includes driver personalization, warning messages and vehicle information
- Floor covering, color-keyed carpeting with rubberized vinyl floor mats (Double Cab and Crew Cabs include second row floor mats)
- Instrumentation, 6-gauge cluster featuring speedometer, fuel level, engine temperature, tachometer, voltage and oil pressure
- Remote Keyless Entry, with 2 transmitters
- Seat, rear 60/40 folding bench (folds up), 3-passenger (includes child seat top tether anchor)
- Seats, front 40/20/40 split-bench, 3-passenger, available in cloth or leather includes driver and front passenger recline with outboard head restraints and center fold-down armrest with storage. Also includes manually adjustable driver lumbar, lockable storage compartment in seat cushion, and storage pockets. (Leather with (KA1) heat is an available extra charge option with (H1Y) Jet Black leather appointed interior trim and requires (PCM) LT Convenience Package or (PDU) All Star Edition.) (Leather with (KA1) heat is an available extra charge option with (H1Y) Jet Black leather appointed interior trim and requires (PCY) LT Fleet Convenience Package or (PDU) All Star Edition.)
- Steering column, Tilt-Wheel, manual with theft-deterrent locking feature
- Steering wheel audio controls
- Steering wheel, leather-wrapped with audio and cruise controls
- Visors, driver and front passenger illuminated vanity mirrors
- Windows, power front and rear with driver express up and down and express down on all other windows

### Exterior

- Bumper, front chrome- Bumper, rear chrome- CornerStep, rear bumper
- Door handles, Black- Glass, deep-tinted
- Grille, chrome with chrome surround, chrome with chrome honeycomb mesh

- Headlamps, halogen reflector
- Lamps, cargo area, cab mounted with switch on center switch bank
- Mirrors, outside heated power-adjustable, black (includes driver's side spotter mirror) (Upgradeable to (DP6) body color with (PDA) Texas Edition or (PEB) Custom Sport.)
- Tailgate and bed rail protection cap, top - Tailgate, EZ-Lift and Lower
- Tailgate, locking utilizes same key as ignition and door
- Tire carrier lock, keyed cylinder lock that utilizes same key as ignition and door
- Tire, spare P255/70R17 all-season, blackwall (Included and only available with (RBZ) P255/70R17 all-season, blackwall tires.)
- Tires, P255/70R17 all-season, blackwall- Wheel, full-size spare, 17" (43.2 cm) steel
- Wheelhouse liners, rear
- Wheels, 17" x 8" (43.2 cm x 20.3 cm) bright machined aluminum

## Safety

- Air conditioning, single-zone- Assist handle, front passenger on A-pillar
- Cruise control, electronic with set and resume speed, steering wheel-mounted
- Door locks, power
- Driver Information Center, 4.2-inch diagonal color display includes driver personalization, warning messages and vehicle information
- Floor covering, color-keyed carpeting with rubberized vinyl floor mats (Double Cab and Crew Cabs include second row floor mats)
- Instrumentation, 6-gauge cluster featuring speedometer, fuel level, engine temperature, tachometer, voltage and oil pressure
- Remote Keyless Entry, with 2 transmitters
- Seat, rear 60/40 folding bench (folds up), 3-passenger (includes child seat top tether anchor)
- Seats, front 40/20/40 split-bench, 3-passenger, available in cloth or leather includes driver and front passenger recline with outboard head restraints and center fold-down armrest with storage. Also includes manually adjustable driver lumbar, lockable storage compartment in seat cushion, and storage pockets. (Leather with (KA1) heat is an available extra charge option with (H1Y) Jet Black leather appointed interior trim and requires (PCM) LT Convenience Package or (PDU) All Star Edition.) (Leather with (KA1) heat is an available extra charge option with (H1Y) Jet Black leather appointed interior trim and requires (PCY) LT Fleet Convenience Package or (PDU) All Star Edition.)
- Steering column, Tilt-Wheel, manual with theft-deterrent locking feature
- Steering wheel audio controls
- Steering wheel, leather-wrapped with audio and cruise controls
- Visors, driver and front passenger illuminated vanity mirrors
- Windows, power front and rear with driver express up and down and express down on all other windows

## Mechanical

- Alternator, 150 amps
- Battery, heavy-duty 730 cold-cranking amps/70 Amp-hr, maintenance-free with rundown protection and retained accessory power
- Body, Pick Up Box- Brakes, 4-wheel disc with DURALIFE rotors, 4-wheel antilock
- Cooling, external engine oil cooler
- Engine, 4.3L FlexFuel EcoTec3 V6 with Active Fuel Management, Direct Injection and Variable Valve Timing includes aluminum block construction with FlexFuel capability, capable of running on unleaded or up to 85% ethanol (285 hp [212 kW] @ 5300 rpm, 305 lb-ft of torque [413 Nm] @ 3900 rpm)
- Exhaust, aluminized stainless-steel muffler and tailpipe
- Frame, fully-boxed, hydroformed front section
- GVWR, 6900 lbs. (3130 kg) (Requires 2WD models and (LV3) 4.3L EcoTec3 V6 engine.)
- Rear axle, 3.23 ratio (Standard and only available on (LV3) 4.3L EcoTec3 V6 engine with 2WD models.)
- Rear wheel drive
- StabiliTrak, stability control system with Proactive Roll Avoidance and traction control includes electronic trailer sway control and hill start assist
- Steering, Electric Power Steering (EPS) assist, rack-and-pinion
- Suspension Package, Handling/Trailerling
- Transmission, 6-speed automatic, electronically controlled with overdrive and tow/haul mode. Includes Cruise Grade Braking and Powertrain Grade Braking

## Option Packages

### Factory Installed Packages

ENGINE, 5.3L FLEXFUEL ECOTEC3 V8 WITH ACTIVE FUEL MANAGEMENT, DIRECT INJECTION AND VARIABLE VALVE TIMING

includes aluminum block \$1,095

construction with Flex Fuel capability, capable of running on unleaded or up to 85% ethanol (355 hp [265 kW] @ 5600 rpm, 383 lb-ft of torque [518 Nm] @ 4100 rpm; more than 300 lb-ft of torque from 2000 to 5600 rpm)

-  
Option Packages Total  
\$1,095

We sale used vehicles as is no warranty. We sale extended warranties ask one of our sales rep. for details.

---

Paniagua Auto Mall

[paniaguaautos.com](http://paniaguaautos.com)

706-529-1919& 423-472-4045

1776 E. Walnut Ave

Dalton, Georgia 30721

© 2023 AutoRevo - All rights reserved. - Powered by AutoRevo