

2013 Mercedes-Benz S S550

Danny Diedrich 602-513-3298

View this car on our website at arizonaclassiccarsales.com/7074041/ebrochure

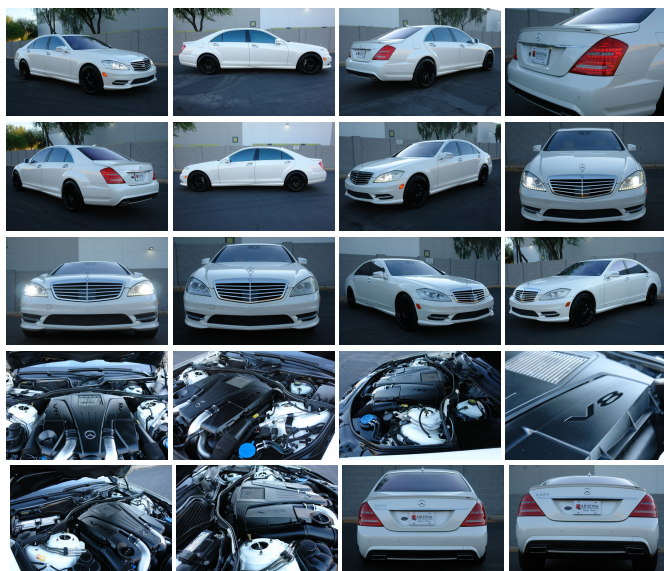


Our Price **\$27,950**

Retail Value ~~\$32,950~~

Specifications:

Year:	2013
VIN:	WDDNG7DB8DA536898
Make:	Mercedes-Benz
Stock:	536898
Model/Trim:	S S550
Condition:	Pre-Owned
Body:	Sedan
Exterior:	White
Engine:	4.6L bi-turbo 32-valve V8 engine
Interior:	Tan Leather
Mileage:	126,798
Drivetrain:	Rear Wheel Drive
Economy:	City 15 / Highway 25



2013 Mercedes-Benz S S550

Arizona Classic Car Sales - 602-513-3298 - View this car on our website at arizonaclassiccarsales.com/7074041/ebrochure

Vehicle History Report : as Of 07/01/2022

Our Location :



Snapshot

2013 MERCEDES-BENZ S550



Accident reported



27 Service history records



4 Previous owners



Types of owners: Corporate, Leas
Personal



Last owned in
Arizona



126,594 Last reported odometer
reading



FREE CARFAX Report

See the full CARFAX Report for additional information

*carfax Snapshot is a reflection of available information on the date the report was pulled. carfax is constantly being updated with new information and is subject to change at any time.

2013 Mercedes-Benz S S550

Arizona Classic Car Sales - 602-513-3298 - View this car on our website at arizonaclassiccarsales.com/7074041/ebrochure

Installed Options

Interior

- (3) rear pwr retractable adjustable head restraints (2011)
- 14-way pwr heated & ventilated front bucket seats -inc: pwr lumbar, 3-position driver seat memory
- Active adjustable front head restraints- Ambient lighting feature
- Anti-theft alarm w/engine immobilizer- Auto-dimming rearview mirror (2011)
- Automatic dual-zone climate control -inc: electrostatic dust & pollen filters, sun, humidity & dew point sensors, seat belt usage sensors (allows climate control to focus first on occupied seats)
- Auxiliary pwr outlet (2011)- Burl walnut interior wood trim
- Central controller w/8" COMAND display- Cruise control
- Digital instrumentation -inc: speedometer, odometer, Touch Shift gear & shift modes selection, tachometer, fuel gauge
- Dual front/rear reading lamps (2011)- Front/rear floor mats (2011)
- Integrated HomeLink compatible (3) button garage door opener (2011) - Leather seat trim
- Mercedes-Benz Maintenance System Plus display -inc: distance remaining to next maintenance, type of service due, reminders
- Multi-function displays in instrument cluster faces -inc: trip computer, exterior temp gauge, maintenance system, oil level check, digital speedometer, reminder & malfunction messages, driver-programmable settings, audio status, navigation route guidance (2011)
- Night security illumination

- Pwr 4-way tilt/telescopic steering column -inc: memory, programmable easy-exit feature
- Pwr rear window sunshade w/1-touch up/down - Pwr trunk closer
- Pwr windows w/1-touch express up/down (2011)- Quad illuminated vanity mirrors (2011)
- Rear window defroster w/auto-shutoff
- SmartKey infrared remote -inc: remote central locking, trunk open, panic alarm, fuel filler door, selective unlock, windows & sunroof open/close, active ventilated front seats on, automatic locking (2011)
- Steering wheel mounted controls -inc: audio, voice, telephone, multi-function display (2011)
- Steering wheel shift paddles (2011)- Wood & leather-wrapped steering wheel

Exterior

- 18" 5-spoke aluminum wheels
- Active bi-xenon automatic headlamps -inc: adaptive high beam assist, cornering lights
- Dual exhaust w/chrome tailpipes- Front foglamps
- Infrared-reflecting & noise insulating glass- P255/45R18 all-season tires
- Pwr auto-folding heated mirrors -inc: memory, auto-dimming driver mirror, integrated LED turn signals (2011)
- Pwr tilt/slide tinted glass sunroof -inc: 1-touch open/close, sunroof memory
- Rain-sensing aero-blade windshield wipers w/heated washer system (2011)
- Single rear foglamp- Soft close doors- Variable doorstop (2011)

Safety

- (3) rear pwr retractable adjustable head restraints (2011)
- 14-way pwr heated & ventilated front bucket seats -inc: pwr lumbar, 3-position driver seat memory
- Active adjustable front head restraints- Ambient lighting feature
- Anti-theft alarm w/engine immobilizer- Auto-dimming rearview mirror (2011)
- Automatic dual-zone climate control -inc: electrostatic dust & pollen filters, sun, humidity & dew point sensors, seat belt usage sensors (allows climate control to focus first on occupied seats)
- Auxiliary pwr outlet (2011)- Burl walnut interior wood trim
- Central controller w/8" COMAND display - Cruise control
- Digital instrumentation -inc: speedometer, odometer, Touch Shift gear & shift modes selection, tachometer, fuel gauge
- Dual front/rear reading lamps (2011)- Front/rear floor mats (2011)
- Integrated HomeLink compatible (3) button garage door opener (2011) - Leather seat trim
- Mercedes-Benz Maintenance System Plus display -inc: distance remaining to next maintenance, type of service due, reminders
- Multi-function displays in instrument cluster faces -inc: trip computer, exterior temp gauge, maintenance system, oil level check, digital speedometer, reminder & malfunction messages, driver-programmable settings, audio status, navigation route guidance (2011)
- Night security illumination
- Pwr 4-way tilt/telescopic steering column -inc: memory, programmable easy-exit feature
- Pwr rear window sunshade w/1-touch up/down - Pwr trunk closer
- Pwr windows w/1-touch express up/down (2011)- Quad illuminated vanity mirrors (2011)
- Rear window defroster w/auto-shutoff
- SmartKey infrared remote -inc: remote central locking, trunk open, panic alarm, fuel filler door, selective unlock, windows & sunroof open/close, active ventilated front seats on, automatic locking (2011)
- Steering wheel mounted controls -inc: audio, voice, telephone, multi-function display (2011)
- Steering wheel shift paddles (2011)- Wood & leather-wrapped steering wheel

Mechanical

- 4.6L bi-turbo 32-valve V8 engine
 - AIRMATIC air suspension w/adaptive damping system (ADS II)
 - Direct-steer pwr vehicle-speed-sensitive rack & pinion steering
 - Driver-adaptive 7-speed automatic transmission -inc: sport & ECO shift modes
 - Electronic parking brake w/automatic disengagement (2011)
 - Independent 4-link front suspension -inc: anti-lift control, stabilizer bar
 - Independent 5-arm multi-link rear suspension -inc: anti-squat & anti-dive systems
 - Pwr perforated/vented front & vented rear disc brakes - Rear wheel drive
-

