



2009 Mercedes-Benz SL550 V8

Website Price \$33,995

View this vehicle on our website at autoparkdallas.com



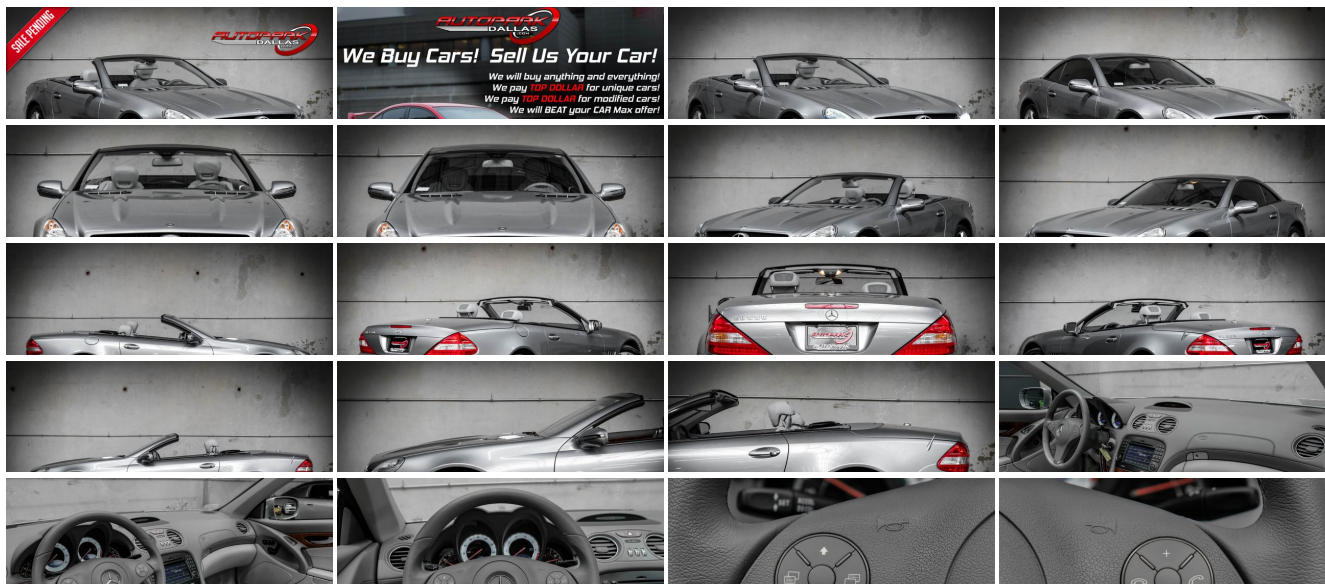
(214) 945-2601

2061 S Stemmons Fwy , Lewisville, TX 75067

Photos

Details

Contact



Specifications:

Year:	2009
VIN:	WDBSK71F19F150027
Make:	Mercedes-Benz
Model/Trim:	SL550 V8
Condition:	Pre-Owned
Body:	Convertible
Exterior:	Palladium Silver Metallic
Engine:	5.5L DOHC SFI 32-valve V8 engine
Interior:	Stone Leather
Mileage:	38,598
Drivetrain:	Rear Wheel Drive
Economy:	City 13 / Highway 21

Vehicle Description

AutoPark Dallas is thrilled to offer you this Beautiful 2009 Mercedes-Benz SL550 with LOW MILEAGE for sale! We may be into sports cars here at APD, but we know our luxury and we know Mercedes-Benz is the best. This SL550 provides a nice little compromise to the need for speed thank to the 5.5L V8 engine inside this beautiful Palladium Silver Metallic on Premium Stone Leather Upholstery. You'll be getting the luxurious ride of a Mercedes-Benz but the horsepower you desire all with a drop-top convertible! Come on in and check out this Mercedes-Benz parked here in our indoor 16,000 Sq Ft Showroom located in Dallas , Texas amongst our inventory of 100+ other Performance / Modified and Luxury Vehicles!

2009 Mercedes-Benz SL550

*** Clean CarFax !***

*** LOW MILEAGE !***

*** Premium 1 Package !***

Palladium Silver Metallic Exterior

Premium Stone Leather Interior

Bluetooth Connectivity

Navigation

Heated & Cooled Seats

Harmon / Kardon LOGIC7 Sound System

Driver & Passenger Seat Memory

Manual Mode w/ Paddle Shifters

Powered Convertible Top & Trunk

Rear Reverse Sensors

Dual Climate Controls

ABC 'Sport' Mode

5.5L DOHC SFI 32-Valve V8 Engine

7-Speed Automatic Transmission

Rear Wheel Drive

Professionally Detailed!

Well Maintained!

*** Free CarFax Report !***

AND SO MUCH MORE!!!

Financing is available!

Check out our Payment Calculator to get an estimate on your monthly payments!

OR

Get pre-approved in no time by filling out a credit application on the 'Finance' section of our website!

We also offer MANY different Extended Warranty options!

Check out our Google Reviews by *Clicking* this LINK!

Referrals and Testimonials is what our business is built on!

The team here at AutoPark Dallas, is dedicated to offering a level of customer service not usually found in the automobile industry. Thanks to years of extensive car buying / selling experience, we pursue quality used and new vehicles that are hand-picked from factory sources. Our love for automobiles and dislike of traditional dealership tactics is what motivates us to provide the service we do! The pride we take in continuing this service long after the vehicle has been delivered is what we strive for! Looking forward to making every effort to see that our customer is completely satisfied and a friend for life!

Pre-purchase inspections are always welcomed!

We also offer airport pick-up, competitive financing options, free CarFax Reports, Car Shipping nationwide, Extended Warranty plans, and so much more!

Trade-In(s) are always accepted or sell us your used car (MODIFIED OR NOT)! Please call or text for more information about Trade-Ins or selling your car to us @ (214) 945-2601!

#(214) 945-2601

Call or Text **Anytime!**

Se habla Español

WE BUY CARS!

WWW.AUTOPARKDALLAS.COM

Installed Options

Interior

- 12-way pwr heated front seats-inc: 3-position memory, pneumatic lumbar support, easy-access courtesy feature, automatic height-adjusting front head restraints
- Alarm system- Aluminum door sills- Attachable fine-mesh wind deflector
- Auto-dimming rearview mirror
- Automatic dual-zone climate control-inc: dust & pollen filters, active charcoal filters, smog sensor, sun sensor, humidity sensor, dew point sensor, REST mode w/engine heat recirculation feature or cabin ventilation, seat belt usage sensors
- Burl walnut wood interior trim- Cruise control- Dual illuminated visor vanity mirrors
- Dual multi-function displays in speedometer & tachometer faces-inc: trip computer, exterior temp gauge, maintenance system, oil level check, digital speedometer, reminder & malfunction messages, driver-programmable settings, cruise control, touch shift gear & shift mode selection, audio status, navigation route guidance
- Electronic analog tachometer & gauges for fuel level & coolant temp

Option Packages

Factory Installed Packages

PARKTRONIC	\$1,140
------------	---------

PREMIUM I PKG	\$3,750
-inc: active ventilated seats w/heat feature, Aircarft, multi-contour seats, pwr trunk closer, Keyless-Go	

STONE, PREMIUM LEATHER SEAT TRIM	
----------------------------------	--

Option Packages Total

- Enhanced voice control for audio, telephone & navigation - Floor mats
- Hard drive GPS navigation system- In-dash SD memory card reader
- Integrated HomeLink compatible (3) button garage door opener - Leather seat trim
- Leather-trimmed pwr 4-way tilt/telescopic steering wheel-inc: memory, audio & multi-function display controls, programmable easy-exit feature
- Leather-trimmed shift knob
- Mercedes-Benz Maintenance System display-inc: distance remaining to next maintenance, type of service due, reminders
- Pwr windows w/1-touch express up/down front & 1-touch express down rear windows
- Rear window defroster w/auto shut-off based on time, exterior temp
- Removable trunk separator
- Shelf behind seats w/retractable luggage straps, locking dual enclosed storage compartments beneath luggage shelf
- SmartKey infrared remote -inc: trunk open, windows open/close, panic alarm, fuel filler door, selective unlock all, hard top raise/lower doors or drivers
- SmartKey system-inc: remote central locking system, anti-theft engine immobilizer, drive away automatic locking

Exterior

- 18" x 8.5" front/18" x 9.5" rear 5-spoke aluminum wheels
- Collapsible compact spare tire w/portable electric air compressor
- Driver-selectable light-sensing headlamps
- Dual pwr heated mirrors w/driver memory/auto-dimming
- Dual-intensity LED brake lamps & taillamps
- Electro-hydraulic retractable aluminum hardtop w/easy-pack system
- Halogen front foglamps- P255/40ZR18 high performance front tires
- P285/35ZR18 high performance rear tires- Single rear red foglamp
- Variable intermittent rain sensing windshield wipers w/heated washer nozzles

Safety

- 12-way pwr heated front seats-inc: 3-position memory, pneumatic lumbar support, easy-access courtesy feature, automatic height-adjusting front head restraints
- Alarm system- Aluminum door sills- Attachable fine-mesh wind deflector
- Auto-dimming rearview mirror
- Automatic dual-zone climate control-inc: dust & pollen filters, active charcoal filters, smog sensor, sun sensor, humidity sensor, dew point sensor, REST mode w/engine heat recirculation feature or cabin ventilation, seat belt usage sensors
- Burl walnut wood interior trim- Cruise control- Dual illuminated visor vanity mirrors
- Dual multi-function displays in speedometer & tachometer faces-inc: trip computer, exterior temp gauge, maintenance system, oil level check, digital speedometer, reminder & malfunction messages, driver-programmable settings, cruise control, touch shift gear & shift mode selection, audio status, navigation route guidance
- Electronic analog tachometer & gauges for fuel level & coolant temp
- Enhanced voice control for audio, telephone & navigation - Floor mats
- Hard drive GPS navigation system- In-dash SD memory card reader
- Integrated HomeLink compatible (3) button garage door opener - Leather seat trim
- Leather-trimmed pwr 4-way tilt/telescopic steering wheel-inc: memory, audio & multi-function display controls, programmable easy-exit feature
- Leather-trimmed shift knob
- Mercedes-Benz Maintenance System display-inc: distance remaining to next maintenance, type of service due, reminders
- Pwr windows w/1-touch express up/down front & 1-touch express down rear windows
- Rear window defroster w/auto shut-off based on time, exterior temp
- Removable trunk separator
- Shelf behind seats w/retractable luggage straps, locking dual enclosed storage compartments beneath luggage shelf
- SmartKey infrared remote -inc: trunk open, windows open/close, panic alarm, fuel filler door, selective unlock all, hard top raise/lower doors or drivers
- SmartKey system-inc: remote central locking system, anti-theft engine immobilizer, drive away automatic locking

Mechanical

- 5.5L DOHC SFI 32-valve V8 engine
- 7-speed driver-adaptive electronic automatic transmission-inc: touch shift, optimum gear programming, comfort mode
- Active Body Control (ABC)-inc: coil spring & electronically controlled hydraulic cylinder w/gas-pressurized shock absorber at each wheel, automatic all-wheel level control, driver-selectable ride-height control, automatic speed-sensitive lowering
- Dual chrome exhaust tips
- Electro-hydraulic braking system w/automatic brake drying & predictive brake priming
- Independent 4-link front suspension- Independent 5-arm multi-link rear suspension
- Pwr 4-piston perforated & internally vented front & 1-piston solid rear disc brakes
- Rear wheel drive
- Vehicle-speed-sensitive pwr rack & pinion steering w/integrated hydraulic damper

Option Packages Total

\$4,890

AUTOPARK

Dallas

Auto Park Dallas

View this car on our website at autoparkdallas.com/7073963

Website: autoparkdallas.com

Phone: (214) 945-2601

Map: 2061 S Stemmons Fwy, Lewisville, TX 75067

