



2021 FORD F150 SHELBY SUPER SNAKE 775HP LIKE NEW ONLY 2K MILES WOW

Our Price \$139,900

View this vehicle on our website at njtruckking.com

King of Cars and Trucks

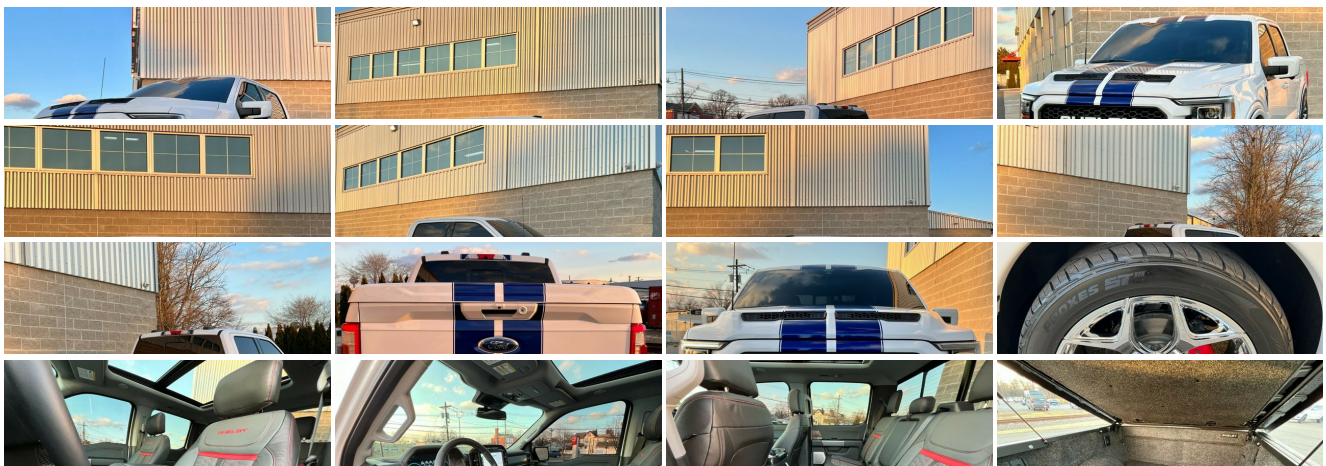
856-693-3181

1229 Broadway , Westville, New Jersey 08093

Photos

Details

Contact





Specifications:

Year:	2021
VIN:	1FTFW1E5XMKE48694
Make:	FORD F150 SHELBY SUPER SNAKE
Model/Trim:	775HP LIKE NEW ONLY 2K MILES WOW
Condition:	Pre-Owned
Body:	Pickup Truck
Exterior:	White
Engine:	ENGINE: 5.0L V8
Interior:	Black Leather
Mileage:	2,951
Drivetrain:	4 Wheel Drive
Economy:	City 16 / Highway 22

Vehicle Description

2021 FORD F150 4X4 CREW
 ~SHELBY SUPER SNAKE~
 775HP V8 SUPERCHARGED
 AUTOMATIC TRANSMISSION
 (ONLY 2,941 ORIGINAL / ACTUAL MILES)
 LIKE NEW
 SHOWROOM CONDITION
 LOADED W/ OPTIONS
 SHARP COLOR COMBO
 WOW!
 IMPOSSIBLE TO FIND RIGHT NOW!
 DONT MISS IT!

BUY IT NOW
 \$139,900
 CALL / TEXT DEENA 856-693-3181 WITH ANY QUESTIONS

Installed Options

Interior

- Distance Pacing w/Traffic Stop-Go- Door Mirrors, Steering Wheel and Pedals
- FOB Controls -inc: Cargo Access and Remote Engine Start
- Gauges -inc: Speedometer, Odometer, Voltmeter, Oil Pressure, Engine Coolant Temp, Tachometer, Transmission Fluid Temp, Trip Odometer and Trip Computer
- Power 1st Row Windows w/Driver And Passenger 1-Touch Up/Down
- Power Door Locks w/Autolock Feature- Power Rear Windows
- Proximity Key For Doors And Push Button Start
- Remote Keyless Entry w/Integrated Key Transmitter, Illuminated Entry and Panic Button
- SYNC 4 w/Enhanced Voice Recognition -inc: 12" LCD capacitive touchscreen w/swipe capability, information on demand panel, wireless phone connection, cloud connected, AppLink w/App catalog, 911 Assist, Apple CarPlay and Android Auto compatibility, digital owners manual, conversational voice command recognition and connected navigation, Note: Navigation services require SYNC®4 and FordPass Connect (optional on select vehicles), complimentary connect service and the FordPass app (see FordPass Terms for details), Customer receives a complimentary 90-day trial of navigation services when an eligible vehicle is added to a member's FordPass account, Trial period begins on the new vehicle warranty start date, At the end of the complimentary period, navigation service will terminate, Connected service and features depend on compatible AT&T network availability, Evolving technology/cellular networks/vehicle capability may limit functionality and prevent operation of connected features, FordPass App, compatible w/select smartphone platforms, is available via a download, Message and data rates may apply

Option Packages

Factory Installed Packages

ENGINE: 5.0L V8
 -inc: auto start-stop technology and flex-fuel capability

- Seats w/Leatherette Back Material- Smart Device Remote Engine Start- Trip Computer
- Unique Multi-Contour Leather Bucket Seats -inc: Active Motion, 4-way adjustable driver/passenger headrests, heated and ventilated 10-way power driver and passenger w/power lumbar, memory driver's seat, flow-through console and floor shifter
- 1 12V DC Power Outlet- 1 12V DC Power Outlet and 3 120V AC Power Outlets
- 2 Seatback Storage Pockets
- 60-40 Folding Split-Bench Front Facing Heated Fold-Up Cushion Rear Seat
- Air Filtration- Compass- Cruise Control w/Steering Wheel Controls
- Day-Night Auto-Dimming Rearview Mirror- Delayed Accessory Power
- Digital/Analog Appearance
- Driver And Passenger Visor Vanity Mirrors w/Driver And Passenger Illumination
- Driver Seat- Fade-To-Off Interior Lighting
- FordPass Connect 4G Mobile Hotspot Internet Access- Front And Rear Map Lights
- Front Center Armrest and Rear Center Armrest
- Full Carpet Floor Covering -inc: Carpet Front And Rear Floor Mats - Full Cloth Headliner
- Garage Door Transmitter- HVAC -inc: Underseat Ducts and Console Ducts
- Heated Leather/Metal-Look Steering Wheel w/Auto Tilt-Away
- Illuminated Front Cupholder
- Instrument Panel Bin, Dashboard Storage, Interior Concealed Storage, Driver / Passenger And Rear Door Bins and 2nd Row Underseat Storage
- Interior Trim -inc: Aluminum Instrument Panel Insert, Cabback Insulator, Aluminum Door Panel Insert, Aluminum Console Insert and Chrome/Metal-Look Interior Accents
- Keypad- Leather/Chrome Gear Shifter Material- Locking Glove Box
- Manual Adjustable Rear Head Restraints
- Mini Overhead Console w/Storage, 1 12V DC Power Outlet and 3 120V AC Power Outlets
- Outside Temp Gauge- Passenger Seat- Perimeter Alarm- Pickup Cargo Box Lights
- Power Adjustable Pedals- Power Tilt/Telescoping Steering Column- Rear Cupholder
- Redundant Digital Speedometer- Remote Releases -Inc: Keyfob Cargo Access
- SYNC 4 Connected Navigation (w/Free 90-Day Trial) Integrated Navigation System w/Voice Activation
- Securilock Anti-Theft Ignition (pats) Engine Immobilizer
- Voice Activated Dual Zone Front Automatic Air Conditioning

Exterior

- Chrome Power Heated Side Mirrors w/Driver Auto Dimming, Power Folding and Turn Signal Indicator
- Ford Co-Pilot360 - Autolamp Auto On/Off Projector Beam Led Low/High Beam Directionally Adaptive Auto High-Beam Daytime Running Lights Preference Setting Headlamps w/Delay-Off
- Tailgate/Rear Door Lock Included w/Power Door Locks
- Tires: 275/60R20 BSW AT -inc: 275/65R18 OWL all-season/all-terrain spare tire
- Aluminum Panels
- Body-Colored Front Bumper w/Body-Colored Rub Strip/Fascia Accent and 2 Tow Hooks
- Body-Colored Rear Step Bumper- Cargo Lamp w/High Mount Stop Light
- Chrome Door Handles- Chrome Grille- Chrome Side Windows Trim- Clearcoat Paint
- Deep Tinted Glass- Front Fog Lamps- Headlights-Automatic Highbeams
- LED Brakelights- Perimeter/Approach Lights- Power Rear Window w/Defroster
- Power Running Boards- Rain Detecting Variable Intermittent Wipers- Regular Box Style
- Spare Tire Stored Underbody w/Crankdown- Steel Spare Wheel
- Tailgate Rear Cargo Access- Wheels: 20" Polished Aluminum

Safety

- Distance Pacing w/Traffic Stop-Go- Door Mirrors, Steering Wheel and Pedals
- FOB Controls -inc: Cargo Access and Remote Engine Start
- Gauges -inc: Speedometer, Odometer, Voltmeter, Oil Pressure, Engine Coolant Temp, Tachometer, Transmission Fluid Temp, Trip Odometer and Trip Computer
- Power 1st Row Windows w/Driver And Passenger 1-Touch Up/Down
- Power Door Locks w/Autolock Feature- Power Rear Windows
- Proximity Key For Doors And Push Button Start
- Remote Keyless Entry w/Integrated Key Transmitter, Illuminated Entry and Panic Button
- SYNC 4 w/Enhanced Voice Recognition -inc: 12" LCD capacitive touchscreen w/swipe capability, information on demand panel, wireless phone connection, cloud connected, AppLink w/App catalog, 911 Assist, Apple CarPlay and Android Auto compatibility, digital owners manual, conversational voice command recognition and connected navigation, Note: Navigation services require SYNC@4 and FordPass Connect (optional on select vehicles), complimentary connect service and the FordPass app (see FordPass Terms for details), Customer receives a complimentary 90-day trial of navigation services when an eligible vehicle is added to a member's FordPass account, Trial period begins on the new vehicle warranty start date, At the end of the complimentary period, navigation service will terminate, Connected service and features depend on compatible AT&T network availability, Evolving technology/cellular networks/vehicle capability may limit functionality and prevent operation of connected features, FordPass App, compatible w/select smartphone platforms, is available via a download, Message and data rates may apply

- Seats w/Leatherette Back Material- Smart Device Remote Engine Start- Trip Computer
- Unique Multi-Contour Leather Bucket Seats -inc: Active Motion, 4-way adjustable driver/passenger headrests, heated and ventilated 10-way power driver and passenger w/power lumbar, memory driver's seat, flow-through console and floor shifter
- 1 12V DC Power Outlet- 1 12V DC Power Outlet and 3 120V AC Power Outlets
- 2 Seatback Storage Pockets
- 60-40 Folding Split-Bench Front Facing Heated Fold-Up Cushion Rear Seat
- Air Filtration- Compass- Cruise Control w/Steering Wheel Controls
- Day-Night Auto-Dimming Rearview Mirror- Delayed Accessory Power
- Digital/Analog Appearance
- Driver And Passenger Visor Vanity Mirrors w/Driver And Passenger Illumination
- Driver Seat- Fade-To-Off Interior Lighting
- FordPass Connect 4G Mobile Hotspot Internet Access- Front And Rear Map Lights
- Front Center Armrest and Rear Center Armrest
- Full Carpet Floor Covering -inc: Carpet Front And Rear Floor Mats - Full Cloth Headliner
- Garage Door Transmitter- HVAC -inc: Underseat Ducts and Console Ducts
- Heated Leather/Metal-Look Steering Wheel w/Auto Tilt-Away
- Illuminated Front Cupholder
- Instrument Panel Bin, Dashboard Storage, Interior Concealed Storage, Driver / Passenger And Rear Door Bins and 2nd Row Underseat Storage
- Interior Trim -inc: Aluminum Instrument Panel Insert, Cabback Insulator, Aluminum Door Panel Insert, Aluminum Console Insert and Chrome/Metal-Look Interior Accents
- Keypad- Leather/Chrome Gear Shifter Material- Locking Glove Box
- Manual Adjustable Rear Head Restraints
- Mini Overhead Console w/Storage, 1 12V DC Power Outlet and 3 120V AC Power Outlets
- Outside Temp Gauge- Passenger Seat- Perimeter Alarm- Pickup Cargo Box Lights
- Power Adjustable Pedals- Power Tilt/Telescoping Steering Column- Rear Cupholder
- Redundant Digital Speedometer- Remote Releases -Inc: Keyfob Cargo Access
- SYNC 4 Connected Navigation (w/Free 90-Day Trial) Integrated Navigation System w/Voice Activation
- Securilock Anti-Theft Ignition (pats) Engine Immobilizer
- Voice Activated Dual Zone Front Automatic Air Conditioning

Mechanical

- Transmission: Electronic 10-Speed Automatic -inc: selectable drive modes: normal, ECO, sport, tow/haul, slippery, deep snow/sand and mud/rut
- 200 Amp Alternator- 2135# Maximum Payload- 26 Gal. Fuel Tank- 3.31 Axle Ratio
- 4-Wheel Disc Brakes w/4-Wheel ABS, Front And Rear Vented Discs, Brake Assist, Hill Hold Control and Electric Parking Brake
- 70-Amp/Hr 610CCA Maintenance-Free Battery w/Run Down Protection
- Auto Locking Hubs- Automatic Full-Time Four-Wheel Drive
- Class IV Trailer Hitch Receiver -inc: towing capability up to TBD lbs, on 3.3L V6 PFDI engine (99B) and 2.7L EcoBoost engine (99P) or up to TBD lbs, on 3.5L EcoBoost engine (99B) and 5.0L V8 engine (99S), 7-pin wiring harness w/7-pin-to-4-pin adapter, smart trailer tow connector and BLIS w/trailer tow coverage Ordering the Trailer Tow Package does not include Integrated Brake Controller (67T). Integrated Brake Controller (67T) is a standalone option and must be ordered separately.
- Double Wishbone Front Suspension w/Coil Springs
- Electric Power-Assist Speed-Sensing Steering- Electronic Transfer Case
- Engine: 5.0L V8 -inc: auto start-stop technology and flex-fuel capability
- Front Anti-Roll Bar- GVWR: 7,050 lbs Payload Package- HD Shock Absorbers
- Integrated Trailer Brake Controller- Leaf Rear Suspension w/Leaf Springs
- Single Stainless Steel Exhaust w/Chrome Tailpipe Finisher
- Towing Equipment -inc: Trailer Sway Control

King of Cars and Trucks

King of Cars and Trucks

View this car on our website at njtruckking.com/7073775

Website: njtruckking.com

Phone: 856-693-3181

Map: [1229 Broadway, Westville, New Jersey 08093](#)

