

2016 Jeep Wrangler Unlimited Rubicon Hard Rock

Prestige Sales Department 408-379-2277

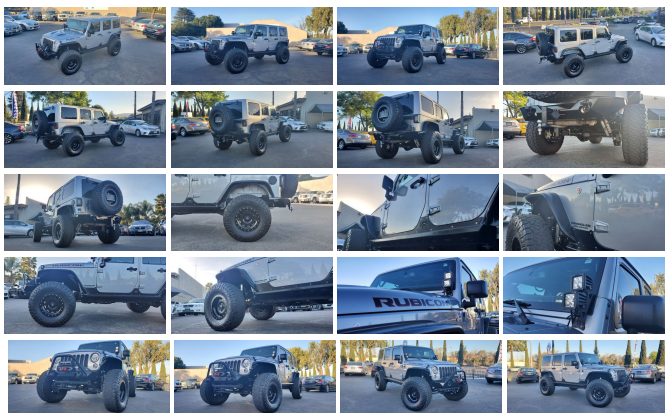
View this car on our website at prestigepre-owned.com/7071425/ebrochure



Our Price **\$49,974**

Specifications:

Year:	2016
VIN:	1C4HJWFG7GL212264
Make:	Jeep
Model/Trim:	Wrangler Unlimited Rubicon Hard Rock
Condition:	Pre-Owned
Body:	SUV
Exterior:	Billet Silver Metallic Clearcoat
Engine:	ENGINE: 3.6L V6 24V VVT
Interior:	Black Leather
Transmission:	TRANSMISSION: 5-SPEED AUTOMATIC (W5A580)
Mileage:	38,931
Economy:	City 16 / Highway 20



2016 JEEP WRANGLER UNLIMITED *ROCK CRAWLER LIFT SET UP*---**4X4**---V-6 3.6L POWER PLANT--(**WITH INCREDIBLY LOW 38K MILES**)--SUPER CLEAN, WELL TAKEN CARE OF, 2-OWNER CARFAX RECORD/TITLE---INCREDIBLE OFF-ROAD CAPABILITY---SAFETY INSPECTION DONE--CAR FEELS STEADY---OPTIONED EXTREMELY WELL:

5-SPEED AUTOMATIC TRANSMISSION
4-WHEEL DRIVE WITH LOCKING DIFFERENTIALS AND ELECTRONICALLY CONTROLLED SWAY BAR DISCONNECT
BODY COLORED 3-PIECE HARD TOP

SMITTYBILT SOFT TOP AND MESH BIKINI TOP

CUSTOM FITTED CAR COVER

BUILT IN, ALL WEATHER SPEAKER IN TRUNK PERFECT FOR TAILGATING!

AWESOME APLINE SOUND SYSTEM THROUGHOUT!

VECTOR OFFROAD DASH BAR PERFECT FOR ALL YOUR OVERLANDING/OFF-ROADING ACCESSORIES

BUILT-IN COBRA CB RADIO

LED LIGHTING THROUGHOUT INTERIOR

ARB FRONT AND REAR DIFFERENTIAL COVERS

POISON SPYDER FRONT AND REAR BUMPERS, ROCK SLIDERS
AND REAR TIRE CARRIER
RIGID INDUSTRIES LED SPOT LIGHTS AND LIGHT BAR
SMITTYBILT GEN2 X20 WINCH WITH FACTOR 55 ULTRAHOOK
TONS OF EXTRAS INCLUDING BANKS RAM AIR INTAKE
FOX AIR SHOCKS PRE-TUNED FOR HEAVY DUTY OFF ROADING
AND ROCK CRAWLING
37" NITTO RIDGE GRAPPLERS WITH 17" SOTA OFF ROAD PRO
SERIES WHEELS

JW SPEAKER LED PROJECTOR HEADLIGHTS w LED
REAR TAILLIGHTS

EASY REMOVABLE TOP
AND MUCH MUCH MORE TO LIST/ OVER \$45K SPENT IN
AFTERMARKET PARTS!

VERY ATTRACTIVE (**BILLIT SILVER METALLIC EXTERIOR**) w/--
(**BLACK LEATHER INTERIOR**)---SMOG--SAFETY INSPECTION
IS COMPLETED-READY FOR DELIVERY----IT DRIVES GREAT---NO
ISSUES WHATSOEVER---NOT TO BE MISSED WITH THOSE
SUPER LOW MILES---TRULY AWESOME TRUCK WITH GREAT OFF
ROADING CAPABILITY! ABSOLUTELY *PRISTINE CONDITION* ALL
WAY AROUND.

At our dealership we work very hard to accurately describe our vehicles
through text descriptions and elaborate photos. When you purchase a
pre-owned vehicle it is not a new vehicle. Any used vehicle can have
normal wear and blemishes. Before placing a bid please read the
descriptions thoroughly and view all pictures.

Disclaimer: All vehicles subject to prior sale. We reserve the right to
make changes without notice, and are not responsible for errors or
omissions. All prices exclude government fees and taxes, any finance
charges, and any emissions test charge.

2016 Jeep Wrangler Unlimited Rubicon Hard Rock

Prestige Pre-owned - 408-379-2277 - View this car on our website at prestigepre-owned.com/7071425/ebrochure


Vehicle History Report : as Of 05/25/2022



Snapshot


2016 JEEP WRANGLER UNLIMITED RUBICON


 No accidents or damage reported to CARFAX

 7 Service history records

 2 Previous owners

 Personal vehicle

 Last owned in California

 38,952 Last reported odometer reading



FREE CARFAX Report

See the full CARFAX Report for additional information

*carfax Snapshot is a reflection of available information on the date the report was pulled. carfax is constantly being updated with new information and is subject to change at any time.

Our Location :



2016 Jeep Wrangler Unlimited Rubicon Hard Rock

Prestige Pre-owned - 408-379-2277 - View this car on our website at prestige-pre-owned.com/7071425/ebrochure

Installed Options

Interior

- 2 12V DC Power Outlets- 2 12V DC Power Outlets and 1 120V AC Power Outlet
- 2 Seatback Storage Pockets
- 4-Way Passenger Seat -inc: Manual Recline and Fore/Aft Movement
- 6-Way Driver Seat -inc: Manual Recline, Height Adjustment and Fore/Aft Movement
- 60-40 Folding Split-Bench Front Facing Fold Forward Seatback Rear Seat
- Analog Appearance- Carpet Floor Trim, Carpet And Rubber Mat- Compass
- Cruise Control w/Steering Wheel Controls- Day-Night Auto-Dimming Rearview Mirror
- Delayed Accessory Power- Driver And Passenger Visor Vanity Mirrors
- Fade-To-Off Interior Lighting- Front Center Armrest w/Storage- Front Cupholder
- Front Map Lights- Full Carpet Floor Covering
- Full Floor Console w/Locking Storage, 2 12V DC Power Outlets and 1 120V AC Power Outlet
- Gauges -inc: Speedometer, Odometer, Engine Coolant Temp, Tachometer, Trip Odometer and Trip Computer
- Instrument Panel Bin, Dashboard Storage, Driver And Passenger Door Bins
- Interior Trim -inc: Deluxe Sound Insulation and Metal-Look Instrument Panel Insert
- Leather Wrapped Steering Wheel- Locking Cargo Area Concealed Storage
- Locking Glove Box- MOPAR Slush Mats

- Manual Adjustable Front Head Restraints and Fixed Rear Head Restraints
- Manual Air Conditioning- Manual Tilt Steering Column- Outside Temp Gauge
- Perimeter Alarm- Power 1st Row Windows w/Driver And Passenger 1-Touch Down
- Power Door Locks w/Autolock Feature
- Power Rear Windows and Removable 3rd Row Windows- Rear Cupholder
- Remote Keyless Entry w/Integrated Key Transmitter, Illuminated Entry and Panic Button
- Sentry Key Engine Immobilizer- Trip Computer

Exterior

- Aluminum Spare Wheel- Auto On/Off Aero-Composite Halogen Headlamps
- Black Door Handles- Black Fender Flares
- Black Power Heated Side Mirrors w/Manual Folding- Black Side Windows Trim
- Body-Colored Grille- Clearcoat Paint- Conventional Rear Cargo Access
- Convertible w/Fixed Roll-Over Protection- Deep Tinted Glass- Front Fog Lamps
- Full-Size Spare Tire Mounted Outside Rear- Fully Galvanized Steel Panels
- Jeep Trail Rated Kit- Premium Black Sunrider Soft Top- Removable Rear Window
- Sunrider Soft Top- Tailgate/Rear Door Lock Included w/Power Door Locks
- Tires: LT255/75R17C BSW Off Road- Variable Intermittent Wipers
- Wheels: 17" x 7.5" Polished Semi-Gloss Black

Safety

- 2 12V DC Power Outlets- 2 12V DC Power Outlets and 1 120V AC Power Outlet
- 2 Seatback Storage Pockets
- 4-Way Passenger Seat -inc: Manual Recline and Fore/Aft Movement
- 6-Way Driver Seat -inc: Manual Recline, Height Adjustment and Fore/Aft Movement
- 60-40 Folding Split-Bench Front Facing Fold Forward Seatback Rear Seat
- Analog Appearance- Carpet Floor Trim, Carpet And Rubber Mat- Compass
- Cruise Control w/Steering Wheel Controls- Day-Night Auto-Dimming Rearview Mirror
- Delayed Accessory Power- Driver And Passenger Visor Vanity Mirrors
- Fade-To-Off Interior Lighting- Front Center Armrest w/Storage- Front Cupholder
- Front Map Lights- Full Carpet Floor Covering
- Full Floor Console w/Locking Storage, 2 12V DC Power Outlets and 1 120V AC Power Outlet
- Gauges -inc: Speedometer, Odometer, Engine Coolant Temp, Tachometer, Trip Odometer and Trip Computer
- Instrument Panel Bin, Dashboard Storage, Driver And Passenger Door Bins
- Interior Trim -inc: Deluxe Sound Insulation and Metal-Look Instrument Panel Insert
- Leather Wrapped Steering Wheel- Locking Cargo Area Concealed Storage
- Locking Glove Box- MOPAR Slush Mats
- Manual Adjustable Front Head Restraints and Fixed Rear Head Restraints
- Manual Air Conditioning- Manual Tilt Steering Column- Outside Temp Gauge
- Perimeter Alarm- Power 1st Row Windows w/Driver And Passenger 1-Touch Down
- Power Door Locks w/Autolock Feature
- Power Rear Windows and Removable 3rd Row Windows- Rear Cupholder
- Remote Keyless Entry w/Integrated Key Transmitter, Illuminated Entry and Panic Button
- Sentry Key Engine Immobilizer- Trip Computer

Mechanical

- 160 Amp Alternator- 22.5 Gal. Fuel Tank
- 4-Wheel Disc Brakes w/4-Wheel ABS, Front And Rear Vented Discs, Brake Assist and Hill Hold Control
- 4.10 Rear Axle Ratio- 50 State Emissions- 600CCA Maintenance-Free Battery
- 892# Maximum Payload- Auto Locking Hubs- Brake Actuated Limited Slip Differential
- Driver Selectable Front Locking Differential- Driver Selectable Rear Locking Differential
- Engine Oil Cooler- Engine: 3.6L V6 24V VVT
- Front Active w/Driver Control Anti-Roll Bar and Rear Anti-Roll Bar- GVWR: 5,700 lbs
- HD Shock Absorbers- Hydraulic Power-Assist Steering
- Leading Link Front Suspension w/Coil Springs- Manual Transfer Case
- Part-Time Four-Wheel Drive- Performance Suspension- Single Stainless Steel Exhaust
- Towing Equipment -inc: Trailer Sway Control
- Trailing Arm Rear Suspension w/Coil Springs- Transmission: 6-Speed Manual (NSG370)

Option Packages

Factory Installed Packages

- _____
ENGINE: 3.6L V6 24V VVT

-
TRANSMISSION: 5-SPEED AUTOMATIC
(W5A580)
-inc: Tip Start, 3.73 Rear Axle
Ratio, Hill Descent Control \$1,350

-
ADD 4.10 AXLE RATIO
\$695

-
AIR CONDITIONING W/AUTO TEMP
CONTROL
-inc: Humidity Sensor, Air Filtering \$395

-
BODY COLOR 3-PIECE HARD TOP
-inc: If ordering without AEM (Dual
Top Group), the black soft top
will not be included, Freedom
Panel Storage Bag, Rear
Window Defroster, Rear
Window Wiper/Washer \$1,595

-
DUAL TOP GROUP
\$1,785

-
HEATED FRONT SEATS
\$395

-
SUPPLEMENTAL FRONT SEAT SIDE AIR
BAGS
\$495

-
4.10 REAR AXLE RATIO

-
QUICK ORDER PACKAGE 24J RUBICON
HARD ROCK
-inc: Engine: 3.6L V6 24V VVT, \$4,800
Transmission: 5-Speed
Automatic (W5A580), Accent
Stitching, Steel Front Bumper,
Silver Interior Accents, Vehicle
Information Center, Remote
USB Port, Uconnect Voice
Command w/Bluetooth, Tire
Pressure Monitoring Display,
Low Gloss Black Wrangler
Decal, Chrome/Leather
Wrapped Shift Knob, MOPAR
Rock Rails, Premium EVIC
Message Center, Rubicon
Hood Decal, Hood w/Power
Dome, Rubicon Hard Rock
Package, Red Trail Rated
Badge, Red Front & Rear Tow
Hooks, Steel Rear Bumper,
Black/Chrome Screws Fuel
Filler Door

-
BILLET SILVER METALLIC CLEARCOAT

-
BLACK, LEATHER TRIMMED BUCKET
SEATS
-inc: Front Seat Back Map
Pockets, Driver Height
Adjuster Seat, Heated Front
Seats

-
Option Packages Total
\$11,510

All interest rates are based on above average credit.

Prestige Pre-owned

prestige-pre-owned.com

408-379-2277

3293 S Winchester Blvd

Campbell, CA 95008

© 2022 AutoRevo - All rights reserved. - Powered by AutoRevo