

**paniaguaautos.com**  
(706)529-1919



## 2005 Subaru Outback

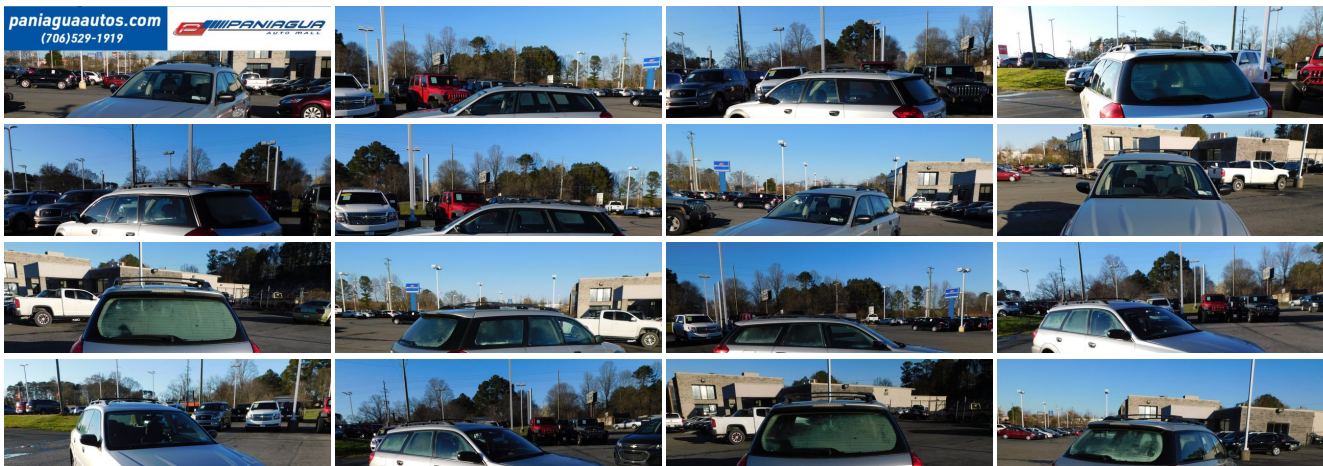
**Our Price \$5,900**

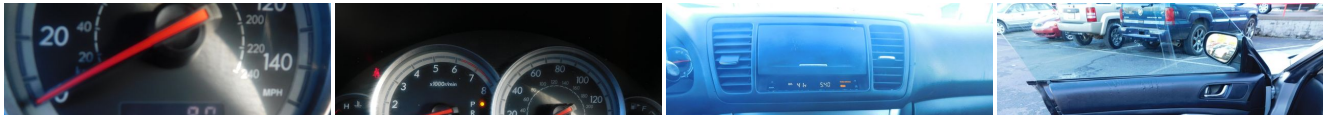
View this vehicle on our website at [paniaguaautos.com](http://paniaguaautos.com)



706-529-1919 & 423-472-4045  
1776 E. Walnut Ave, Dalton, GA 30721

Photos  
Details  
Contact





## Specifications:

<b>Year:</b>	2005
<b>VIN:</b>	<a href="#">4S4BP61C357391168</a>
<b>Make:</b>	Subaru
<b>Stock:</b>	8370
<b>Model/Trim:</b>	Outback
<b>Condition:</b>	Pre-Owned
<b>Body:</b>	Wagon
<b>Exterior:</b>	Silver
<b>Engine:</b>	2.5L SOHC SMPI 16-valve 4-cyl boxer engine
<b>Interior:</b>	Black Cloth
<b>Transmission:</b>	AUTOMATIC
<b>Mileage:</b>	153,417
<b>Drivetrain:</b>	All Wheel Drive
<b>Economy:</b>	City 22 / Highway 28

## Vehicle Description

2005 SUBARU OUTBACK 2.5L 4 CYLINDER AUTOMATIC CLOTH INTERIOR ALL POWER HURRY IN TODAY AND CHECK OUT OUR BEST DEALS WE HAVE THE BEST SELECTION OF USED VEHICLES IN TOWN COME SEE US SOON

## Installed Options

### Interior

- 12V aux pwr outlet in center console - Cargo area 12-volt pwr outlet
- Carpeted floor mats- Pwr door locks- Remote keyless entry-inc: rear gate unlock
- Security system- (4) cupholders-inc: dual front/dual rear
- 4-stage heated front buckets w/active head restraints
- 60/40 split fold down rear bench seat w/headrests on all seating positions
- 8-way pwr driver seat w/adjustable lumbar support
- AM/FM stereo w/CD player-inc: (6) speakers- Air conditioning- Cargo area hooks
- Cargo area security cover- Cruise control- Digital trip computer
- Front passenger seatback net pocket - Illuminated visor vanity mirrors w/extendors
- In-glass antenna
- Instrumentation-inc: dual-mode digital trip odometer, ambient temp gauge
- Lighting-inc: front door courtesy, map, off-delay dome, glove box, cargo area
- Overhead console- Pre-wiring for auto-dimming rearview compass mirror
- Pwr windows w/driver-side one-touch down, illuminated switches
- Rear gate aluminum sill plate- Rear window defroster- Removable cargo tray
- Taupe/charcoal flat woven upholstery
- Tilt steering column w/off-delay illuminated ignition switch ring
- Titanium metallic trim-inc: doors, console, shifter handle

### Exterior

- Daytime running lights (DRL)- Fixed intermittent rear window wiper w/washer, de-icer
- Raised-profile black roof rails w/cross bars
- Variable intermittent windshield wipers w/de-icer, driver side fin
- Aerodynamic body-side ground effects- Automatic-off 4-beam halogen headlights
- Black fold away heated pwr mirrors - Body-side cladding- Multi-reflector fog lights
- Outback-style body color body-side molding- Protective rear bumper step pad
- Raised strake type hood- Rear gate spoiler- Splash guards

### Safety

- 12V aux pwr outlet in center console - Cargo area 12-volt pwr outlet
- Carpeted floor mats- Pwr door locks- Remote keyless entry-inc: rear gate unlock
- Security system- (4) cupholders-inc: dual front/dual rear
- 4-stage heated front buckets w/active head restraints
- 60/40 split fold down rear bench seat w/headrests on all seating positions
- 8-way pwr driver seat w/adjustable lumbar support
- AM/FM stereo w/CD player-inc: (6) speakers- Air conditioning- Cargo area hooks
- Cargo area security cover- Cruise control- Digital trip computer
- Front passenger seatback net pocket - Illuminated visor vanity mirrors w/extendors
- In-glass antenna
- Instrumentation-inc: dual-mode digital trip odometer, ambient temp gauge
- Lighting-inc: front door courtesy, map, off-delay dome, glove box, cargo area
- Overhead console- Pre-wiring for auto-dimming rearview compass mirror
- Pwr windows w/driver-side one-touch down, illuminated switches
- Rear gate aluminum sill plate- Rear window defroster- Removable cargo tray
- Taupe/charcoal flat woven upholstery
- Tilt steering column w/off-delay illuminated ignition switch ring
- Titanium metallic trim-inc: doors, console, shifter handle

### Mechanical

- 4-wheel anti-lock braking system (ABS) w/electronic brake-force distribution (EBD)
- 16 x 6.5" alloy wheels - 16.9 gallon fuel tank
- 2.5L SOHC SMPI 16-valve 4-cyl boxer engine
- 225/60HR16 RBL mud & snow Bridgestone Potenza tires
- 4-speed "SPORTSHIFT" automatic transmission w/OD- All-wheel drive
- Electronic throttle control (ETC)
- Electronically managed continuously variable transfer clutch
- Engine speed-sensitive variable assist pwr rack & pinion steering
- Front/rear stabilizer bars- HD raised independent front/rear suspension
- Pwr front ventilated/solid rear disc brakes- Rear limited slip differential

Paniagua Auto Mall

Paniagua Auto Mall

View this car on our website at [paniaguaautos.com/7069399](https://paniaguaautos.com/7069399)

Website: [paniaguaautos.com](https://paniaguaautos.com)

Phone: [706-529-1919](tel:706-529-1919) & [423-472-4045](tel:423-472-4045)

Map: [1776 E. Walnut Ave](#) , Dalton, GA 30721

